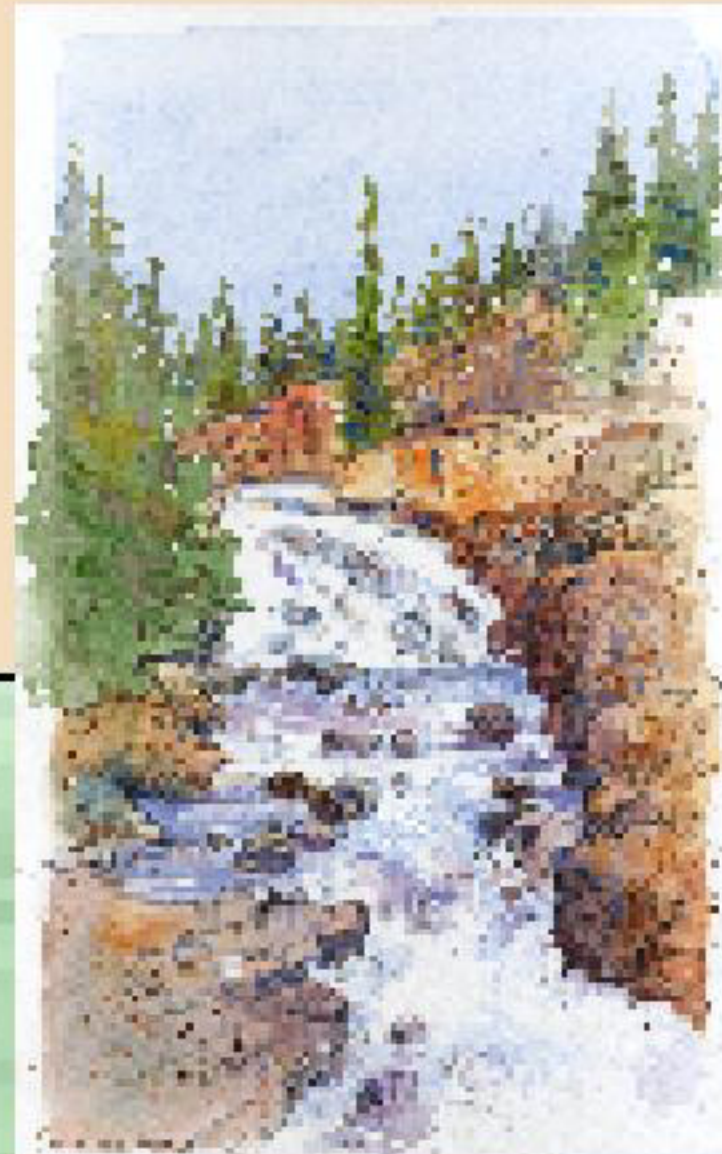




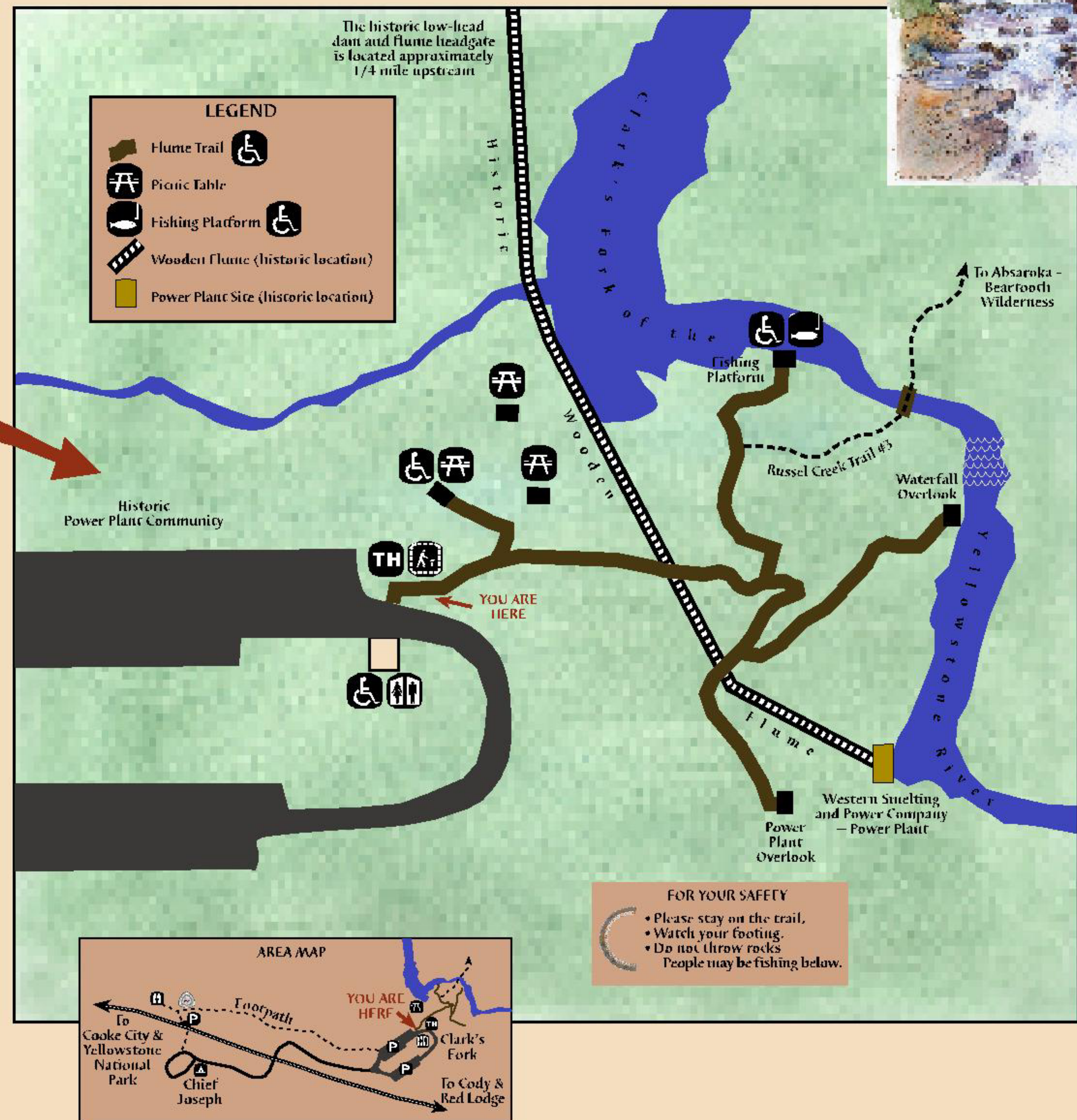
THE FLUME TRAIL

The Beartooth Highway — Adventure Side Trip



About 80 years ago, a bustling community developed on the site where you are now standing. A power plant was built to supply power to the mining operations on Henderson Mountain. A wooden flume, seen in this photo, carried water to the power plant where the water plunged 50 feet to the powerhouse turbines.

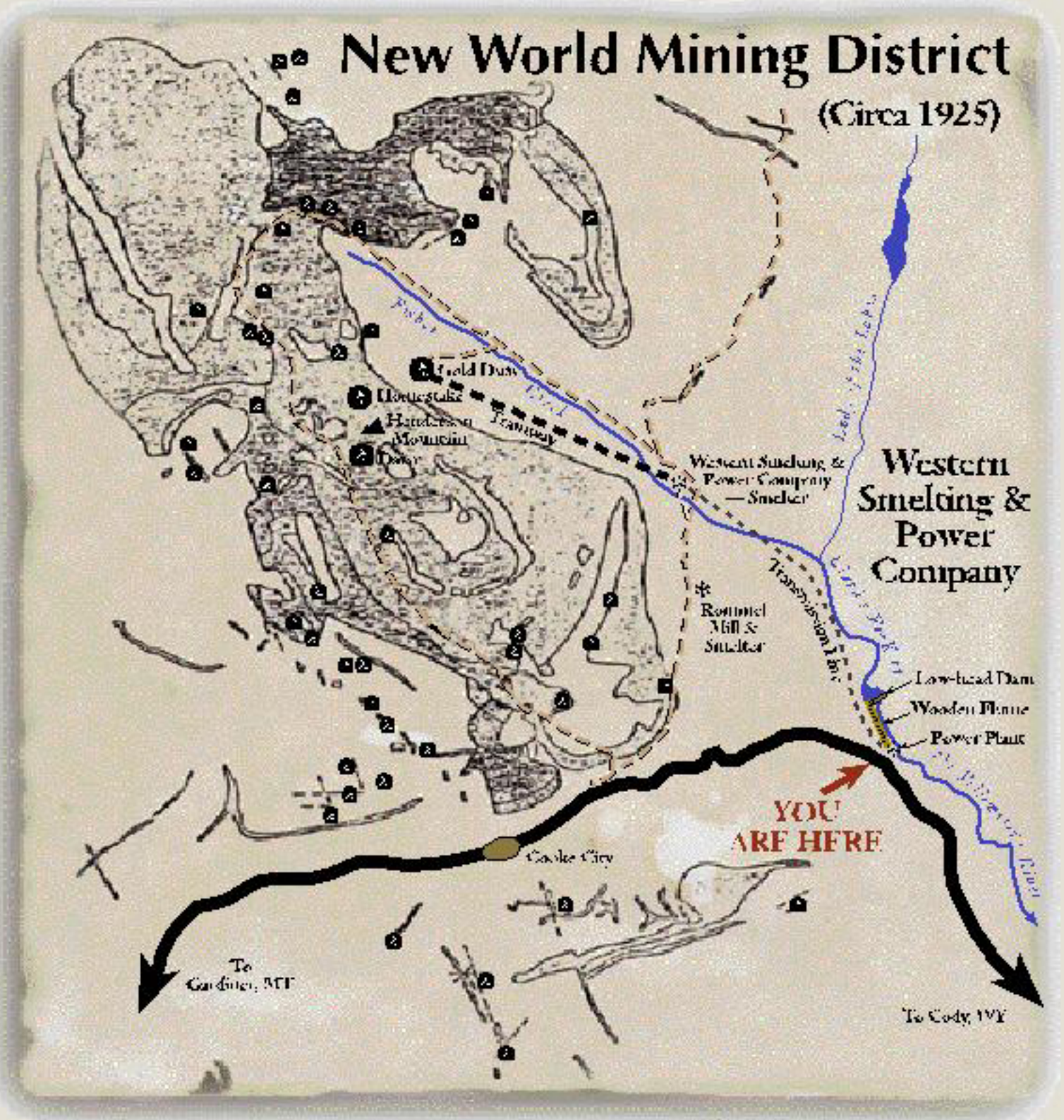
The turbine cog provide clues as to how the power plant produced electricity.



New World Mining District:

Gold was first discovered in the mountains north of what is now Cooke City in 1870. The land, however, belonged to the Crow Indians and was closed to mining development and settlement by Europeans. The creation of Yellowstone National Park in 1872 further isolated the remote mining district.

In 1882, the Crow Indian Reservation was reduced in size opening up the mountains to gold seekers. Mining ventures quickly sprang up in the New World Mining District as a number of copper, gold, and silver claims were developed at the base of Henderson Mountain.



Western Smelting and Power Company:

In the 1920s, Western Smelting and Power Company expanded the Gold Dust Mine and purchased nearby mines including the Daisy and the Homestake claims. The three mines were driven further into Henderson Mountain to explore and mine copper, gold, and silver ore in what was later identified as the Homestake Breccia Pipe. The company also built this power plant along the Clark's Fork of the Yellowstone River as well as a transmission line, tramway, and a copper and gold smelter on Fisher Creek.