

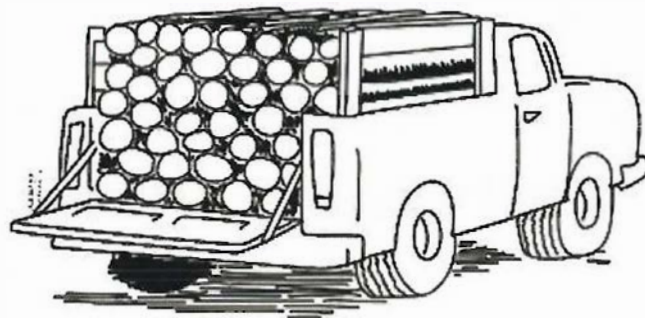
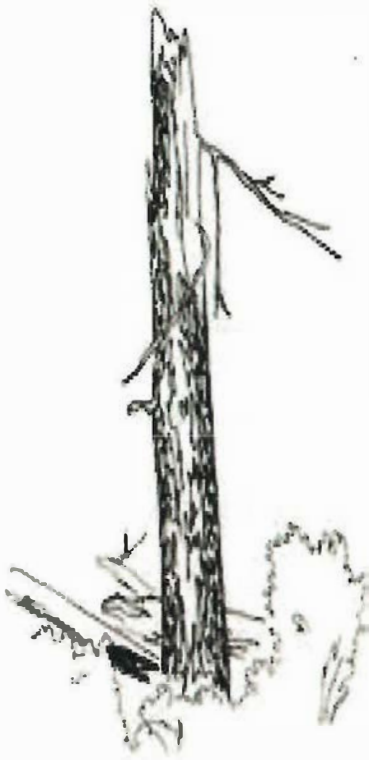
2025

Custer Gallatin National Forest

Bozeman, Hebgen Lake, Yellowstone, &
Gardiner Ranger Districts

Firewood Map

For Personal Use
Firewood Permits



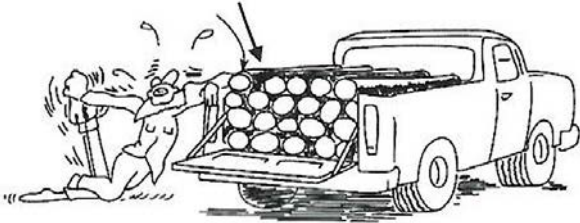
*Welcome to the Custer Gallatin National Forest. The Ranger Districts provide many resources including trees for firewood, wildlife, recreation, and unspoiled scenery for public use and enjoyment. As managers of the National Forests, we welcome the opportunity to provide firewood for public use. **This map is part of the firewood permit and highlights additional permit terms for specific areas (FS2400-8).** Please become familiar with the permit terms included here and on the permit to help make both your time in the Forest and our job more enjoyable.*



Validating Your Firewood Permit

It is your responsibility to fill out your firewood permit properly. If you fail to fill out your permit you are in violation of the terms and conditions of your permit and may be subject to fines, penalties, and further prosecution.

APPROXIMATELY
ONE HALF (1/2) CORD



APPROXIMATELY
ONE (1) CORD



Fill out permit before
you start cutting your
firewood.

To properly validate permit:

1. Fill out the date, time **BEFORE** you start cutting. Fill out the quantity removed prior to transporting the firewood.
2. You need to fill out the permit each time you collect/transport firewood.
3. Have the permit with you at all times while you are collecting/transporting firewood.

*Remember to clean up slash you created out of any road
ditches, and to scatter slash in the woods*

Fire Precautions

Firewood cutters are required to have the following equipment while cutting and transporting firewood:



Saw: Exhaust system in good repair. Screen-type spark arrester of 0.023" mesh or less, qualified under US Forest Service standards.



Shovel: Long-handled, round point with 8 inch blade.

Fire extinguisher: A fully charged operable fire extinguisher with pressurized chemicals. Not less than eight (8) ounce capacity.

Critical Fire Danger: Restrictions that prohibit fuelwood cutting may be enacted during periods of critical fire danger.



Smoking: Smoking is prohibited during periods of critical fire danger. Contact the applicable Ranger Station for current fire restrictions.

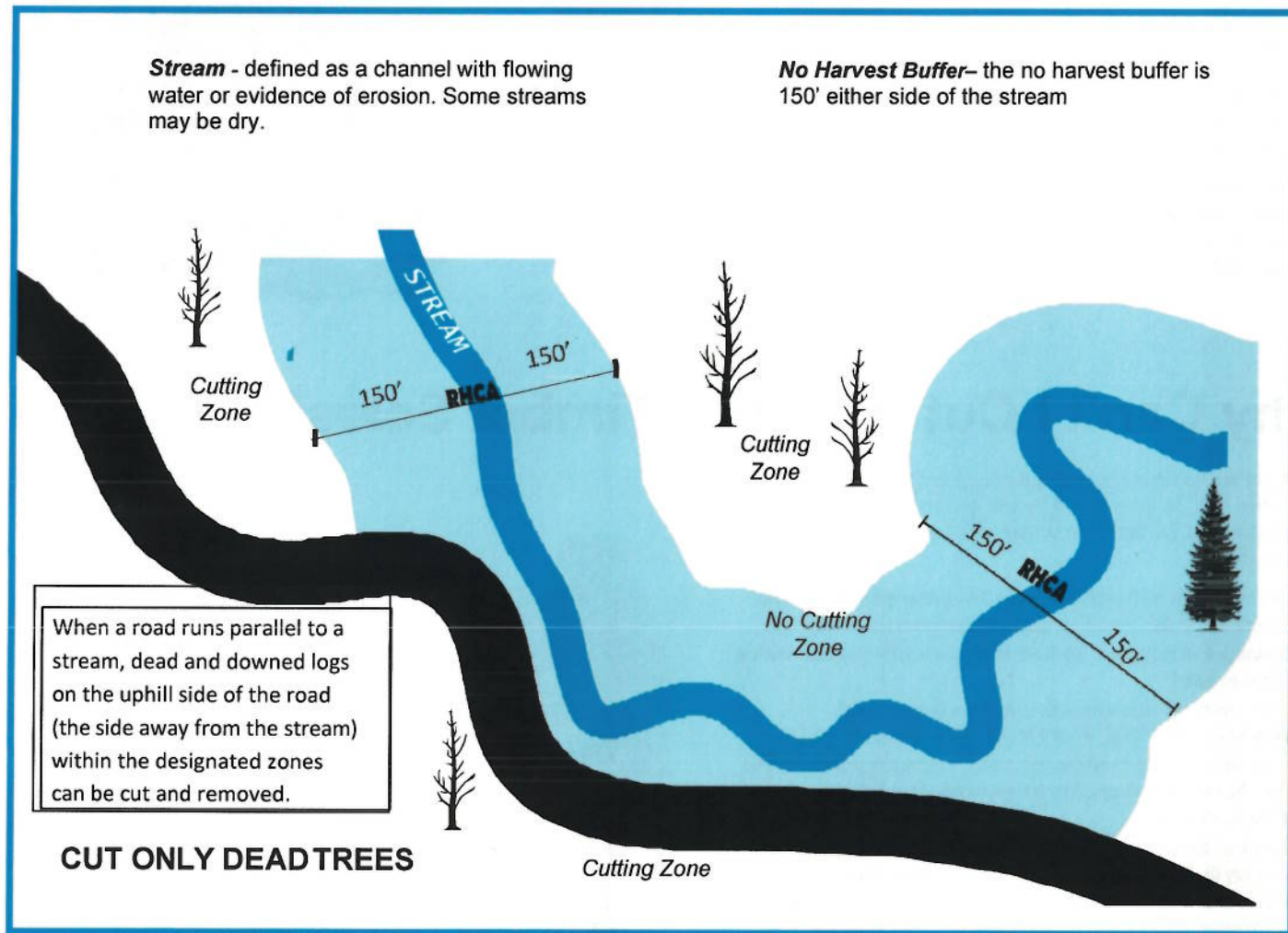
Fire Prevention Safety Tips

1. Keep the saw well away from cigarettes or open flame when adjusting the saw or fueling.
2. Let your saw cool for at least 5 minutes before refueling.
3. Carry your gas in a safety can equipped with a spout, or use a funnel so that gasoline does not spill on the ground.
4. Move your saw from the place where it was fueled and away from gasoline vapors before starting it. Also, remove oil and sawdust from all metal parts.
5. An 8-ounce minimum capacity fire extinguisher as well as a size "0" or larger shovel should be in your immediate possession within the cutting area.

Report Fires to:
Billings Dispatch
(406) 896-2900

Riparian Areas and Streams

Riparian no harvest buffers occur throughout the Custer Gallatin National Forest. **It is your responsibility to know when you are near a stream and in a riparian no harvest zone.** National Forests in Montana, as well as a variety of other State, Federal, and private partners are working to conserve and restore riparian areas. You are required to restrict your firewood cutting to 150' from streams, lakes and wet areas. Trees, logs, and other vegetation are vital within riparian zones for soil stabilization, influx of nutrients to the stream, cover for fish and aquatic organisms, and temperature regulation. Please help us protect these important riparian areas.



Wildlife Trees Look Before You Cut!

Standing dead trees, or snags, are very important to many animals and play a role in supporting wildlife populations in the forest. They are a source of food, perches, and protective cover for many birds and mammals. Large dead trees (especially those with cavities) are particularly important and can remain standing for many years.



Cutting and removal of any tree bearing this sign is prohibited.

Whitebark Pine

- Cutting whitebark pine on the Custer Gallatin National Forest is prohibited.
- High elevation whitebark pine snags of all sizes (including dead or downed logs) provide valuable wildlife habitat.
- Standing dead or downed logs are also valued for watershed protection. The physical position of trees on the landscape along with downed logs helps to delay snowmelt and retains snowdrifts into early to mid - summer preventing rapid snowmelt.
- Identification: If the tree still has needles it will have five needles per bundle as compared to lodgepole pine that only has two needles per bundle. These stately trees are known for their multi-forked silhouettes on high mountain ridges.

Crown is broadly branched and open.

Thin gray bark.

WBP can easily be confused with lodgepole pine, which has similar bark, but only 2 needles per fascicle.



Why Can't I Cut in Active Timber Sales?

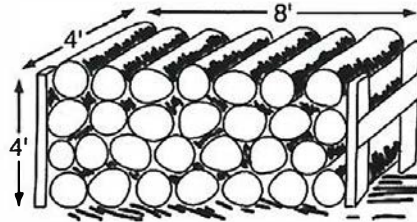
- Cutting in active timber sales is prohibited. When a timber sale is purchased by the purchaser they have bought all of the timber to be harvested within the sale area boundary.
- A timber sale will typically have "no firewood cutting signs" located in the sale area boundary. Sometimes these signs are vandalized or removed. **So how will you know you are within a timber sale?**
- The boundary of a sale unit is always painted with **ORANGE OR PINK VERTICAL STRIPES**, the middle stripe faces into the cutting unit and the other two face on line with the unit boundary. All timber within this boundary is part of the timber sale.
- Most of the trees within this boundary may or may not have paint on the trees; they still cannot be cut since they could be timber that the purchaser has bought. Or the prescription that was written for this unit requires certain trees to remain standing.
- Standing dead or downed logs are also valued for large woody debris within the timber sale to help reduce soil erosion or shade protection for planted trees. The physical position of trees on the landscape along with downed logs helps to delay snowmelt and retains snowdrifts into early to mid - summer preventing rapid snowmelt.
- **Cutting where log decks and/or landing slash/debris piles are present is prohibited.**



What a boundary marked tree looks like

How Do I Estimate the Number of Cords on My Load?

- Firewood is commonly measured in cords. A standard cord is the amount of tightly piled wood in a stack, 4 feet high by 4 feet wide by 8 feet long.
- 1 cord = 128 cubic feet - approximately 2,700 lbs.
- To calculate the number of cords in a stack of wood, multiply the piles height by its width, and then by stick length (all in feet), then divide by 128.

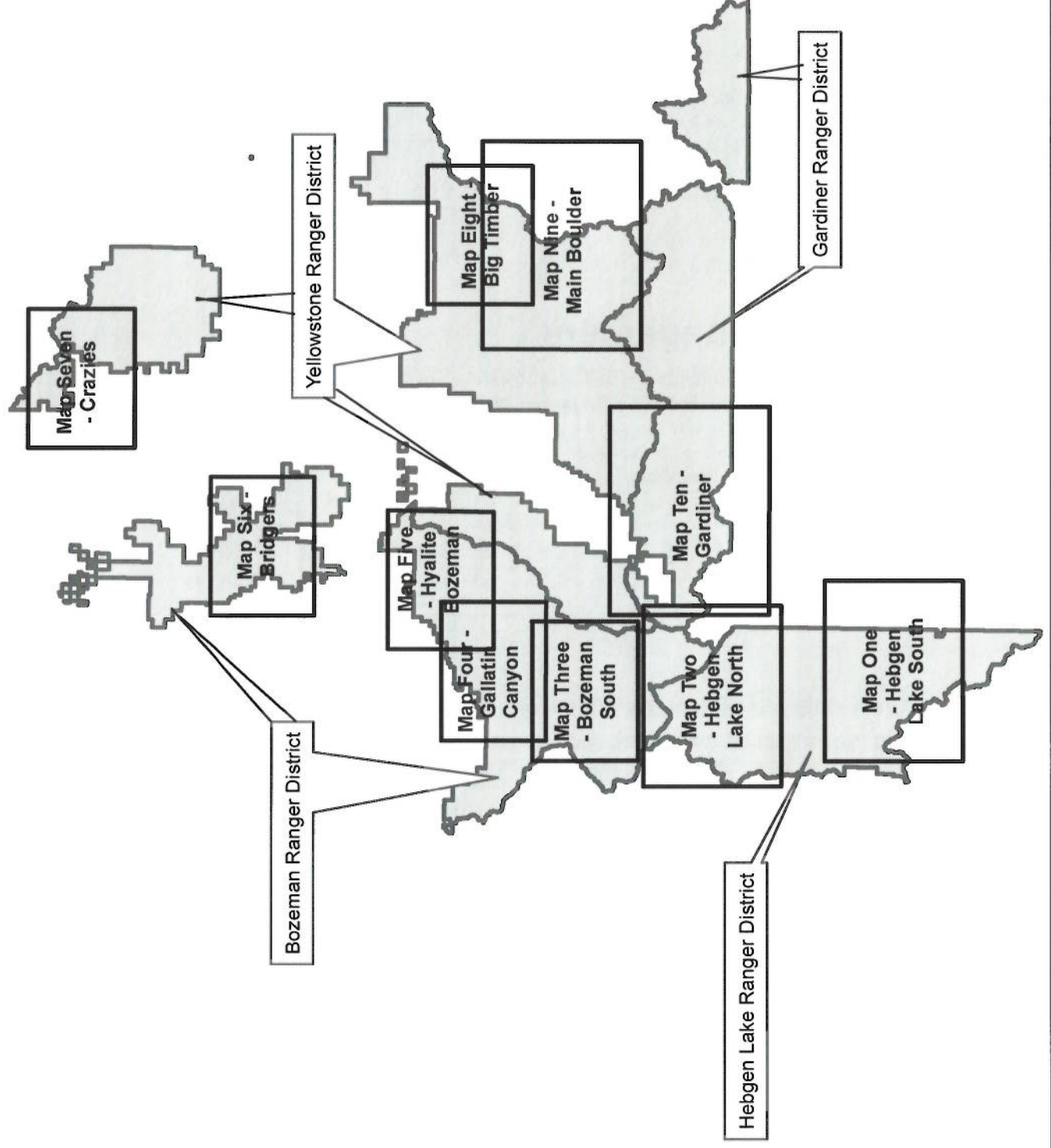


Travel Management

- Motorized vehicles are not allowed off existing roads that are open to the public, unless otherwise specified within the permit. Please refer to the Custer Gallatin National Forest Motor Vehicle Use Maps (MVUM) for current open roads and trails. MVUM's are free and available hardcopy at the Forest offices, as well as at the Avenza store for use with smartphones and tablets.

Areas shown in red on the following maps generally depict major travel corridors, special use areas, recreational areas, and timber sales. If in question about cutting in direct proximity to these areas, please contact the district office or avoid them within reason. All no firewood cutting areas shown on all maps are valid through December 31, 2025.

Firewood Cutting Restrictions - Extents Map



Please refer to the
Custer Gallatin National Forest
Motor Vehicle Use Maps (MVUM) for current open
roads and trails

Caribou Targhee
National Forest
(Cutting Not Authorized with this
permit/different region and permit)

Hebgen Lake Ranger District
 Required with Firewood Removal Permit FS-2400-8
 No firewood cutting areas identified. See permit for further restrictions.
 Please refer to the Custer Gallatin National Forest Motor Vehicle Use Maps (MVUM) for current open roads and trails

Hebgen Lake South - Map One

Legend

- No Firewood Cutting Areas
- Major Peaks
- Campgrounds (No firewood cutting)
- Motorized Roads
- Road Numbers
- County Roads and Highways
- Motorized Trails
- National Forest Land - Open
- Other Than National Forest Land - Closed
- Major Lakes
- Streams

Map Labels:

- Blue Danube Lake
- Earthquake Lake
- Cabin Creek Campground
- Beaver Creek Campground
- Spring Creek Camp
- Hebgen Lake
- Whits Lakes
- Johnson Lake
- Pathbone Lake
- Little Taper Creek
- Vegete Creek
- Truck Creek
- Rainbow Lake
- Cherry Creek
- Cherry Creek Campground
- Lonesomehurst Campground
- Obsidian Sands
- Mosquito Pass
- Timber Sale
- Plateau Timber Sale
- Yellowstone National Park
- West Yellowstone
- Mount Two Top
- Custer Gallatin National Forest
- Thirsty Creek
- Reas Pass Creek
- Pine Creek
- Engel Creek
- Enget Creek
- Meadow Creek
- Stephens Creek
- Upham Creek
- Hebgen Creek
- Twins Creek
- Jesse Creek
- Tyoga Creek
- Howard Creek
- North Fork Dry Creek
- Dixie Creek
- Kelly Creek
- Gillen Creek
- Black Mt
- Upper Coffin Lake
- Coffin Mtn
- Sheep Mtn
- Rumbaugh Ridge
- Ironheat Mtn
- Dry Fork
- Timber Creek
- Bottom Creek
- Anthill Creek
- Angelike Creek
- Spring Branch
- Brimstone Creek
- Freezeout Creek
- Timber Creek
- North Fork Dry Creek
- South Fork Dry Creek
- Ingals Creek
- Road Creek
- Boojack Creek
- Sawtell Creek
- Yale Creek
- East Fork Hotel Creek
- Orange Creek
- Willow Creek
- House Creek
- Spring Creek
- Myers Creek
- Tom Creek
- Hill Roaring Creek
- Tin Cup Creek
- Blue Creek
- West Fork
- Arange Creek
- Tyler Creek
- Thirsty Creek
- Reas Pass Creek
- Pine Creek
- Engel Creek
- Enget Creek
- Meadow Creek
- Stephens Creek
- Upham Creek
- Hebgen Creek
- Twins Creek
- Jesse Creek
- Tyoga Creek
- Howard Creek
- North Fork Dry Creek
- Dixie Creek
- Kelly Creek
- Gillen Creek
- Black Mt
- Upper Coffin Lake
- Coffin Mtn
- Sheep Mtn
- Rumbaugh Ridge
- Ironheat Mtn
- Dry Fork
- Timber Creek
- Bottom Creek
- Anthill Creek
- Angelike Creek
- Spring Branch
- Brimstone Creek
- Freezeout Creek
- Timber Creek
- North Fork Dry Creek
- South Fork Dry Creek
- Ingals Creek
- Road Creek
- Boojack Creek
- Sawtell Creek
- Yale Creek
- East Fork Hotel Creek
- Orange Creek
- Willow Creek
- House Creek
- Spring Creek
- Myers Creek
- Tom Creek
- Hill Roaring Creek
- Tin Cup Creek
- Blue Creek
- West Fork
- Arange Creek
- Tyler Creek
- Thirsty Creek
- Reas Pass Creek
- Pine Creek
- Engel Creek
- Enget Creek
- Meadow Creek
- Stephens Creek
- Upham Creek
- Hebgen Creek
- Twins Creek
- Jesse Creek
- Tyoga Creek
- Howard Creek
- North Fork Dry Creek
- Dixie Creek
- Kelly Creek
- Gillen Creek
- Black Mt
- Upper Coffin Lake
- Coffin Mtn
- Sheep Mtn
- Rumbaugh Ridge
- Ironheat Mtn
- Dry Fork
- Timber Creek
- Bottom Creek
- Anthill Creek
- Angelike Creek
- Spring Branch
- Brimstone Creek
- Freezeout Creek
- Timber Creek
- North Fork Dry Creek
- South Fork Dry Creek
- Ingals Creek
- Road Creek
- Boojack Creek
- Sawtell Creek
- Yale Creek
- East Fork Hotel Creek
- Orange Creek
- Willow Creek
- House Creek
- Spring Creek
- Myers Creek
- Tom Creek
- Hill Roaring Creek
- Tin Cup Creek
- Blue Creek
- West Fork
- Arange Creek
- Tyler Creek
- Thirsty Creek
- Reas Pass Creek
- Pine Creek
- Engel Creek
- Enget Creek
- Meadow Creek
- Stephens Creek
- Upham Creek
- Hebgen Creek
- Twins Creek
- Jesse Creek
- Tyoga Creek
- Howard Creek
- North Fork Dry Creek
- Dixie Creek
- Kelly Creek
- Gillen Creek
- Black Mt
- Upper Coffin Lake
- Coffin Mtn
- Sheep Mtn
- Rumbaugh Ridge
- Ironheat Mtn
- Dry Fork
- Timber Creek
- Bottom Creek
- Anthill Creek
- Angelike Creek
- Spring Branch
- Brimstone Creek
- Freezeout Creek
- Timber Creek
- North Fork Dry Creek
- South Fork Dry Creek
- Ingals Creek
- Road Creek
- Boojack Creek
- Sawtell Creek
- Yale Creek
- East Fork Hotel Creek
- Orange Creek
- Willow Creek
- House Creek
- Spring Creek
- Myers Creek
- Tom Creek
- Hill Roaring Creek
- Tin Cup Creek
- Blue Creek
- West Fork
- Arange Creek
- Tyler Creek
- Thirsty Creek
- Reas Pass Creek
- Pine Creek
- Engel Creek
- Enget Creek
- Meadow Creek
- Stephens Creek
- Upham Creek
- Hebgen Creek
- Twins Creek
- Jesse Creek
- Tyoga Creek
- Howard Creek
- North Fork Dry Creek
- Dixie Creek
- Kelly Creek
- Gillen Creek
- Black Mt
- Upper Coffin Lake
- Coffin Mtn
- Sheep Mtn
- Rumbaugh Ridge
- Ironheat Mtn
- Dry Fork
- Timber Creek
- Bottom Creek
- Anthill Creek
- Angelike Creek
- Spring Branch
- Brimstone Creek
- Freezeout Creek
- Timber Creek
- North Fork Dry Creek
- South Fork Dry Creek
- Ingals Creek
- Road Creek
- Boojack Creek
- Sawtell Creek
- Yale Creek
- East Fork Hotel Creek
- Orange Creek
- Willow Creek
- House Creek
- Spring Creek
- Myers Creek
- Tom Creek
- Hill Roaring Creek
- Tin Cup Creek
- Blue Creek
- West Fork
- Arange Creek
- Tyler Creek
- Thirsty Creek
- Reas Pass Creek
- Pine Creek
- Engel Creek
- Enget Creek
- Meadow Creek
- Stephens Creek
- Upham Creek
- Hebgen Creek
- Twins Creek
- Jesse Creek
- Tyoga Creek
- Howard Creek
- North Fork Dry Creek
- Dixie Creek
- Kelly Creek
- Gillen Creek
- Black Mt
- Upper Coffin Lake
- Coffin Mtn
- Sheep Mtn
- Rumbaugh Ridge
- Ironheat Mtn
- Dry Fork
- Timber Creek
- Bottom Creek
- Anthill Creek
- Angelike Creek
- Spring Branch
- Brimstone Creek
- Freezeout Creek
- Timber Creek
- North Fork Dry Creek
- South Fork Dry Creek
- Ingals Creek
- Road Creek
- Boojack Creek
- Sawtell Creek
- Yale Creek
- East Fork Hotel Creek
- Orange Creek
- Willow Creek
- House Creek
- Spring Creek
- Myers Creek
- Tom Creek
- Hill Roaring Creek
- Tin Cup Creek
- Blue Creek
- West Fork
- Arange Creek
- Tyler Creek
- Thirsty Creek
- Reas Pass Creek
- Pine Creek
- Engel Creek
- Enget Creek
- Meadow Creek
- Stephens Creek
- Upham Creek
- Hebgen Creek
- Twins Creek
- Jesse Creek
- Tyoga Creek
- Howard Creek
- North Fork Dry Creek
- Dixie Creek
- Kelly Creek
- Gillen Creek
- Black Mt
- Upper Coffin Lake
- Coffin Mtn
- Sheep Mtn
- Rumbaugh Ridge
- Ironheat Mtn
- Dry Fork
- Timber Creek
- Bottom Creek
- Anthill Creek
- Angelike Creek
- Spring Branch
- Brimstone Creek
- Freezeout Creek
- Timber Creek
- North Fork Dry Creek
- South Fork Dry Creek
- Ingals Creek
- Road Creek
- Boojack Creek
- Sawtell Creek
- Yale Creek
- East Fork Hotel Creek
- Orange Creek
- Willow Creek
- House Creek
- Spring Creek
- Myers Creek
- Tom Creek
- Hill Roaring Creek
- Tin Cup Creek
- Blue Creek
- West Fork
- Arange Creek
- Tyler Creek
- Thirsty Creek
- Reas Pass Creek
- Pine Creek
- Engel Creek
- Enget Creek
- Meadow Creek
- Stephens Creek
- Upham Creek
- Hebgen Creek
- Twins Creek
- Jesse Creek
- Tyoga Creek
- Howard Creek
- North Fork Dry Creek
- Dixie Creek
- Kelly Creek
- Gillen Creek
- Black Mt
- Upper Coffin Lake
- Coffin Mtn
- Sheep Mtn
- Rumbaugh Ridge
- Ironheat Mtn
- Dry Fork
- Timber Creek
- Bottom Creek
- Anthill Creek
- Angelike Creek
- Spring Branch
- Brimstone Creek
- Freezeout Creek
- Timber Creek
- North Fork Dry Creek
- South Fork Dry Creek
- Ingals Creek
- Road Creek
- Boojack Creek

Please refer to the
Custer Gallatin National Forest
Motor Vehicle Use Maps (MVUM) for current open
roads and trails

Hebgen Lake Ranger District
 Required with Firewood Removal Permit FS-2400-8
 No firewood cutting areas identified. See permit for further restrictions.
 Please refer to the Custer Gallatin National Forest Motor Vehicle Use Maps (MVUM) for current open roads and trails

Lee Metcalf Wilderness

Custer Gallatin National Forest

Lee Metcalf Wilderness

Black Butte

Legend

- No Firewood Cutting Areas
- Major Peaks
- Campgrounds
- Motorized Roads
- Road Numbers
- County Roads and Highways
- Motorized Trails
- National Forest Land - Open
- Other Than National Forest Land - Closed
- Major Lakes
- Streams

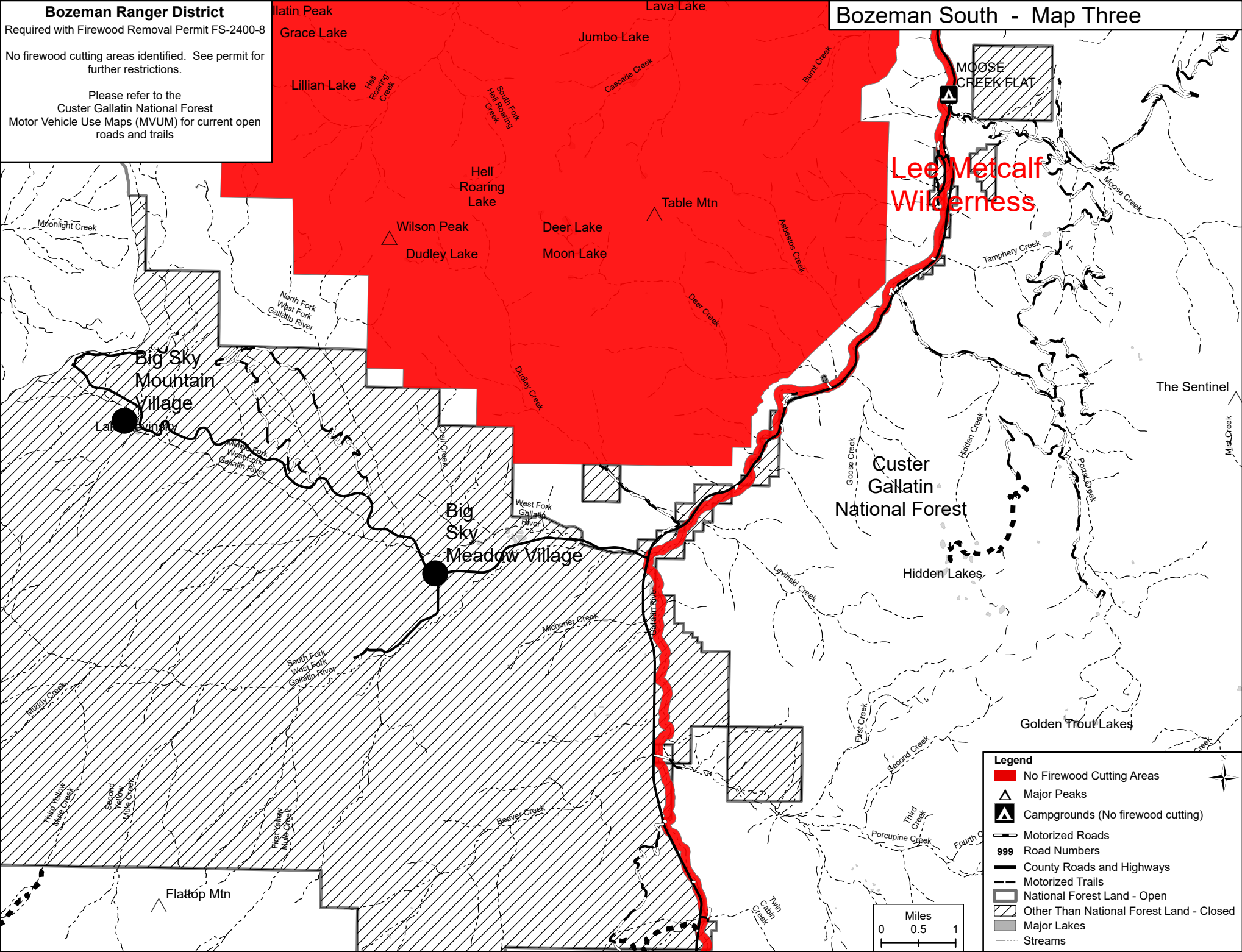
Scale: 0 0.5 1 Miles

Map Features: The map shows the Hebgen Lake North area, including the Lee Metcalf Wilderness (shaded red), Custer Gallatin National Forest (hatched), and surrounding areas. Key features include:

- Mountains:** Shedhorn Mtn, Woodward Mtn, Sentinel Peak, Monument Mtn, Cinnamon Mtn, Lincoln Mtn, Crown Butte, Ramshorn Peak, Skull Creek, Soldier Creek, Tom Miner Peak, Canary Bird Peak, Black Butte.
- Lakes:** Lizard Lakes, Marble Lake, Albino Lake, Turquoise Lake, Pika Point, Lomna Lake, Rose Lake, Expedition Lake, Thunderbolt Lake, Little Pine Lakes, Comet Lake, Blue Paradise Lake, Lightning Lake, Alp Lake.
- Creeks:** Indian Creek, Sheathorn Creek, No Man Creek, Raw Liver Creek, Meadow Creek, Left Fork Deadhorse Creek, Cache Creek, Taylor Creek, Elridge Creek, Wapiti Creek, Little Wapiti Creek, Slide Creek, Sage Creek, Canyon Creek, Monument Creek, Burnt Fork, Hilgard Creek, North Fork Hilgard Creek, South Fork Hilgard Creek, Sentinel Creek, Wolf Creek, Alp Creek, Rose Creek, Wiggins Creek, Beaver Creek.
- Roads:** Highway 191, Highway 134, various motorized roads and trails.
- Other:** Red Cliff, Burnt Fork, Terminal Monument Creek, Shoshone Creek, Dry Creek, Trail Creek, Applegate Creek, Tom Miner Creek, Black Butte Creek, Wickup Creek, Shoshone Creek, Terminal Monument Creek.

Bozeman Ranger District
Required with Firewood Removal Permit FS-2400-8
No firewood cutting areas identified. See permit for further restrictions.
Please refer to the Custer Gallatin National Forest Motor Vehicle Use Maps (MVUM) for current open roads and trails

Bozeman South - Map Three



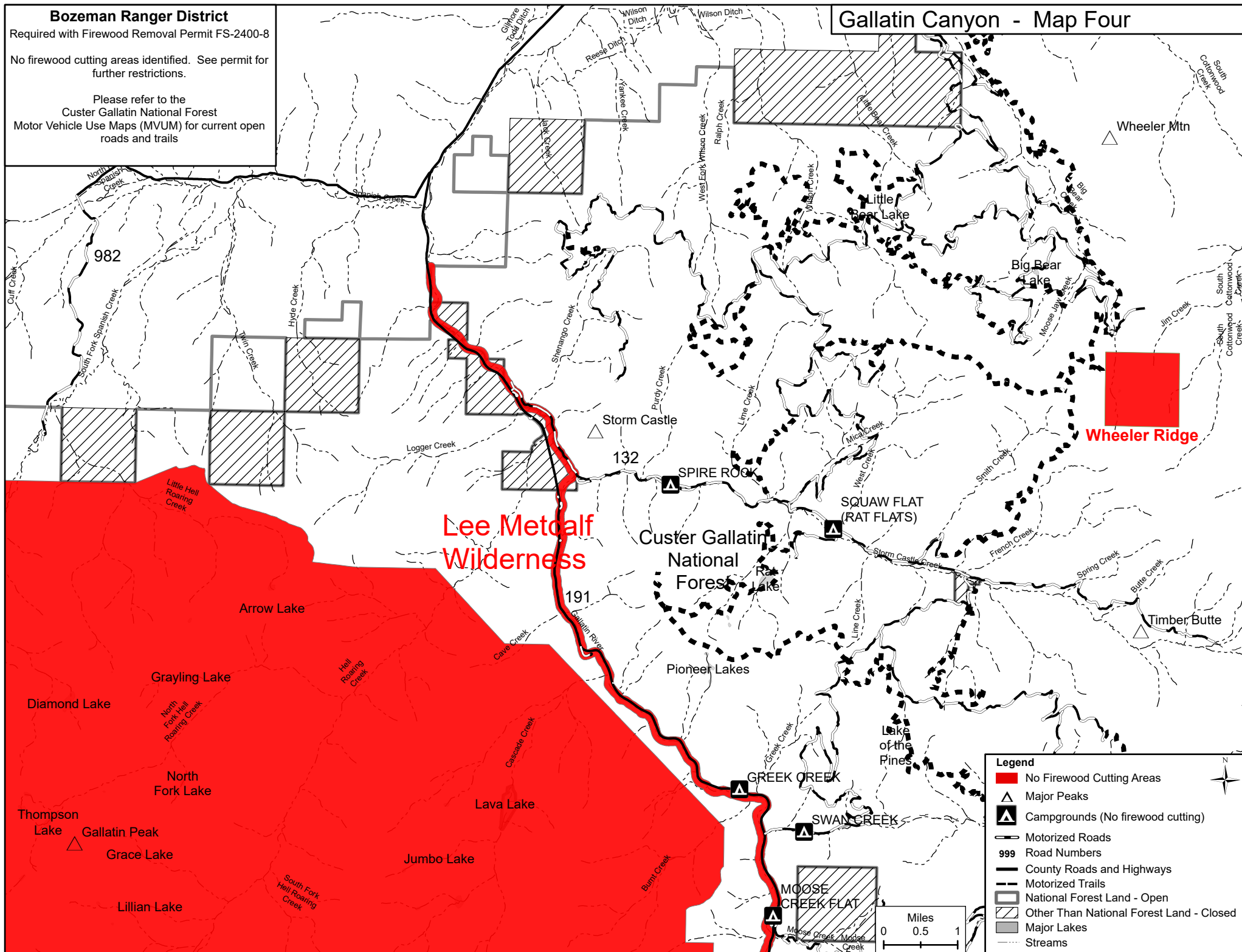
Bozeman Ranger District

Required with Firewood Removal Permit FS-2400-8

No firewood cutting areas identified. See permit for further restrictions.

Please refer to the
Custer Gallatin National Forest
Motor Vehicle Use Maps (MVUM) for current open
roads and trails

Gallatin Canyon - Map Four

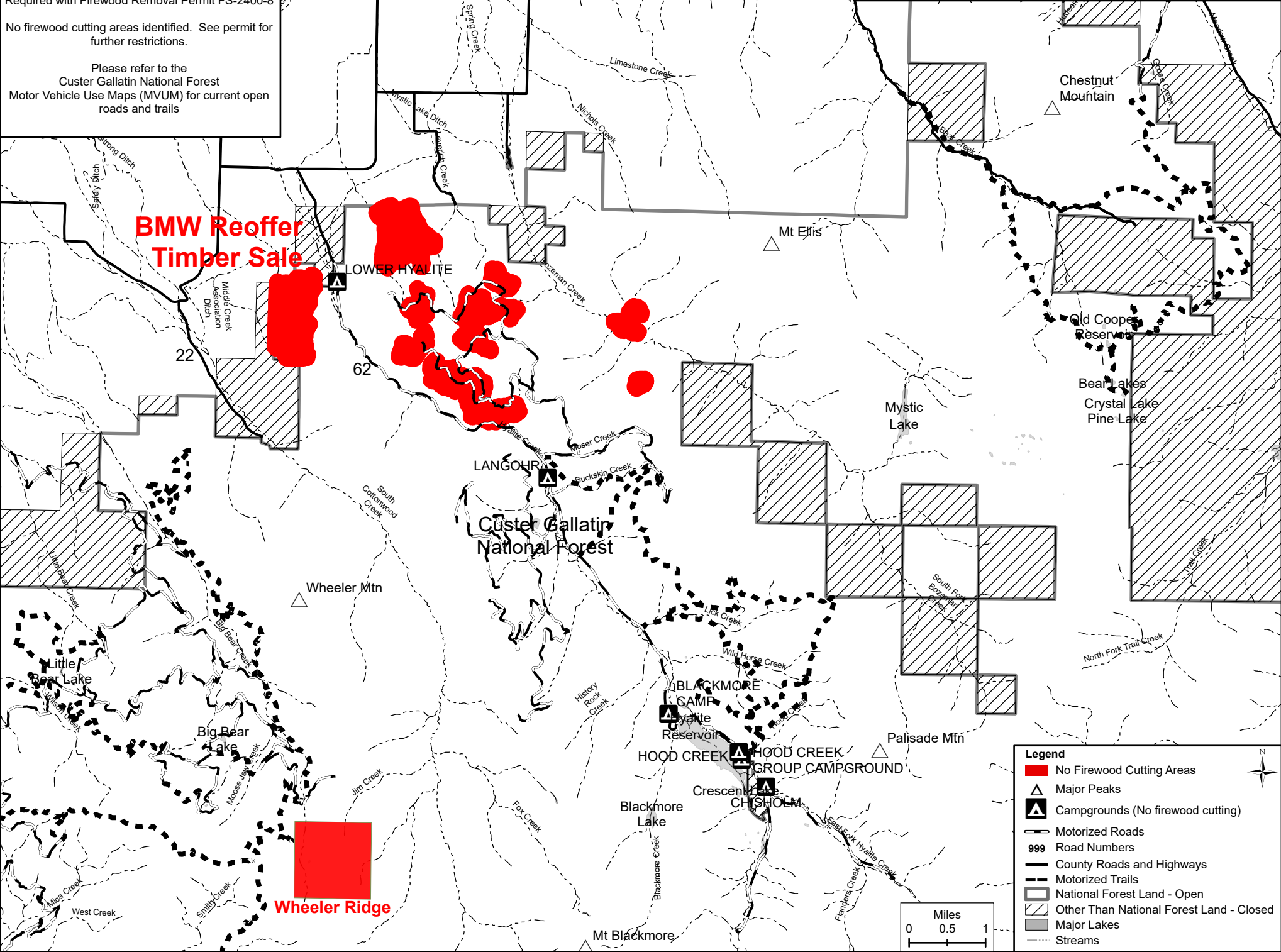


Bozeman Ranger District
Required with Firewood Removal Permit FS-2400-8

No firewood cutting areas identified. See permit for further restrictions.

Please refer to the
Custer Gallatin National Forest
Motor Vehicle Use Maps (MVUM) for current open
roads and trails

Hyalite Bozeman - Map Five

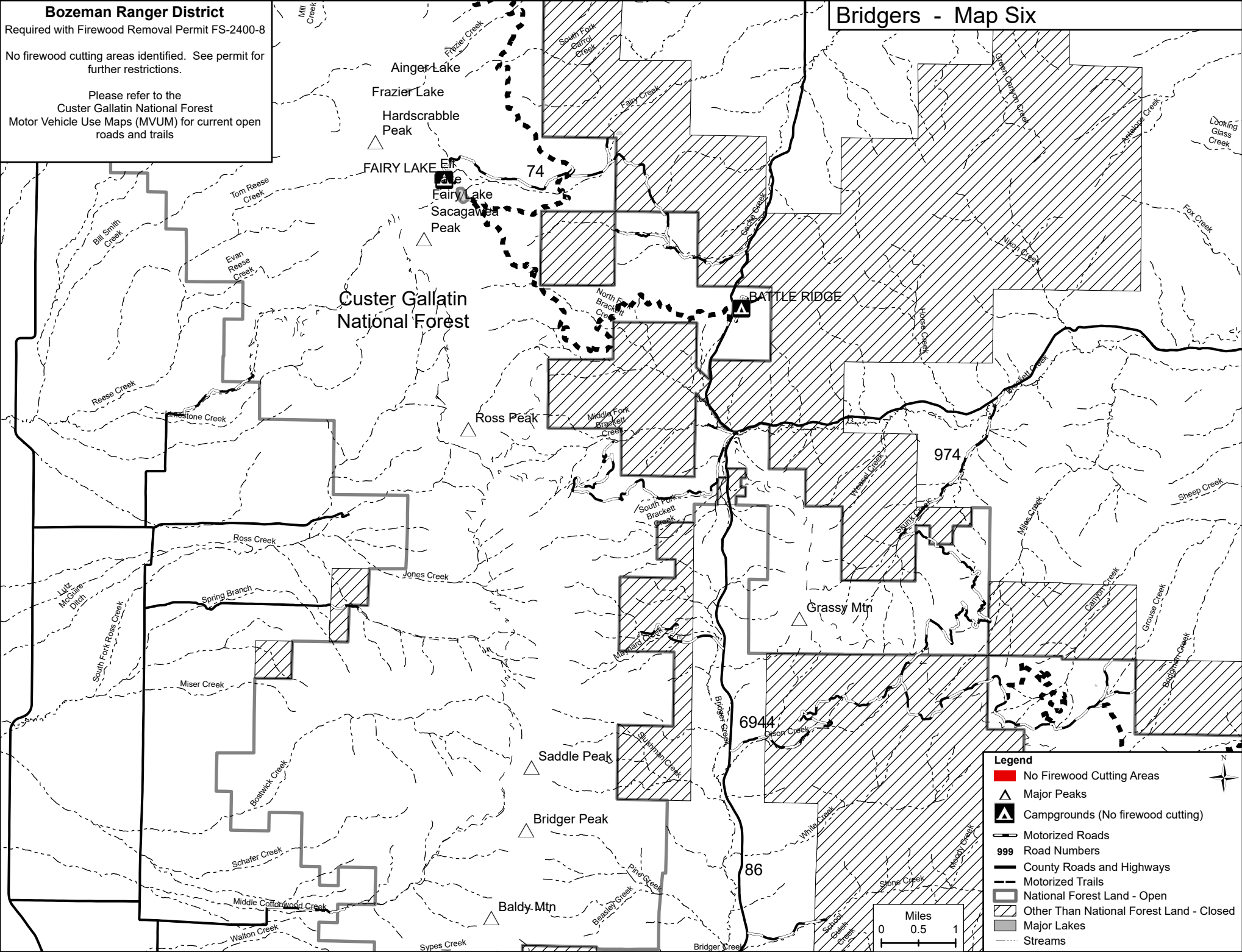


Bozeman Ranger District
Required with Firewood Removal Permit FS-2400-8

No firewood cutting areas identified. See permit for further restrictions.

Please refer to the
Custer Gallatin National Forest
Motor Vehicle Use Maps (MVUM) for current open
roads and trails

Bridgers - Map Six



Yellowstone Ranger District
Required with Firewood Removal Permit FS-2400-8

No firewood cutting areas identified. See permit for further restrictions.

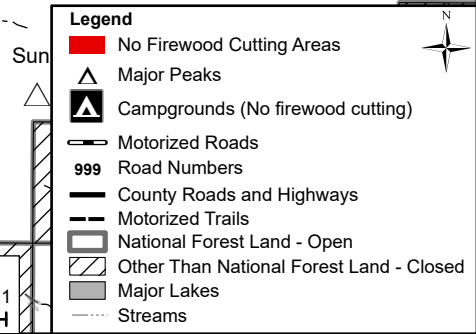
Please refer to the
Custer Gallatin National Forest
Motor Vehicle Use Maps (MVUM) for current open roads and trails

No firewood cutting areas identified. See permit for further restrictions.

[illegible]

Legend

- No Firewood Cutting Areas
- Major Peaks
- Campgrounds (No firewood cutting)
- Motorized Roads
- 999** Road Numbers
- County Roads and Highways
- Motorized Trails
- National Forest Land - Open
- Other Than National Forest Land - Closed
- Major Lakes
- Streams

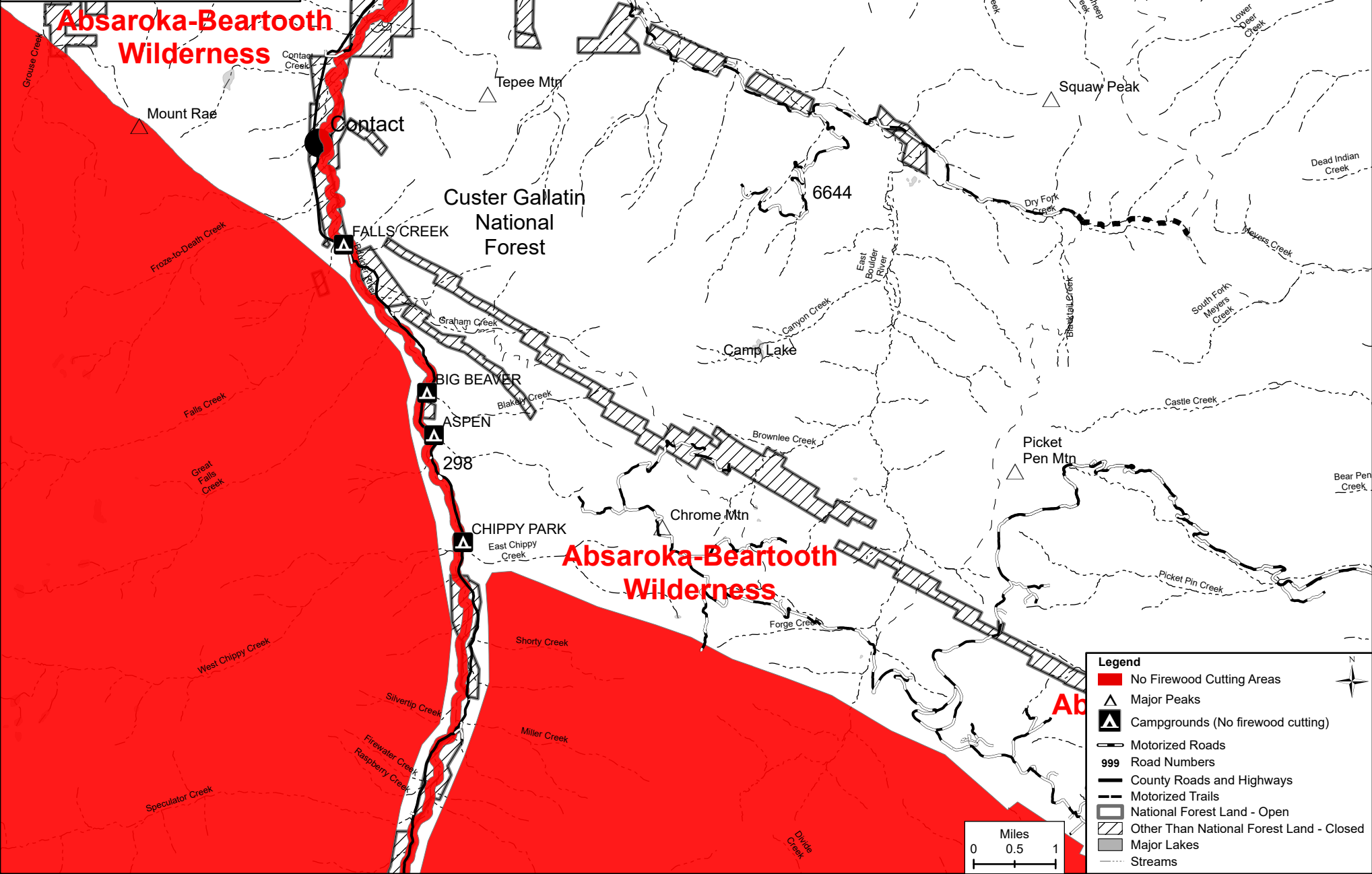


Yellowstone Ranger District
Required with Firewood Removal Permit FS-2400-8

No firewood cutting areas identified. See permit for further restrictions.

Please refer to the Custer Gallatin National Forest Motor Vehicle Use Maps (MVUM) for current open roads and trails

Big Timber - Map Eight



Yellowstone Ranger District

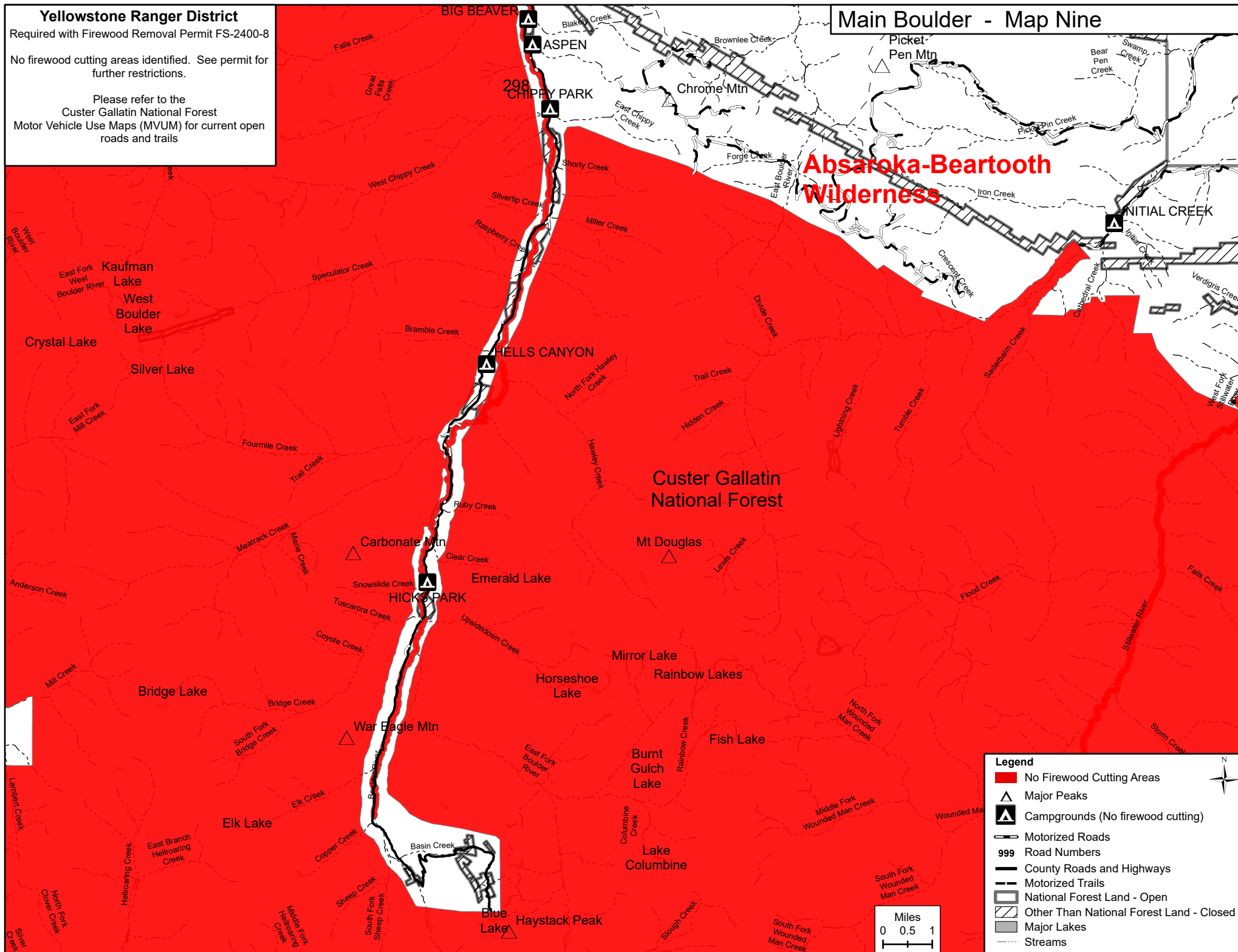
Required with Firewood Removal Permit FS-2400-8

No firewood cutting areas identified. See permit for further restrictions.

Please refer to the
Custer Gallatin National Forest
Motor Vehicle Use Maps (MVUM) for current open
roads and trails

Main Boulder - Map Nine

Absaroka-Beartooth Wilderness



Gardiner Ranger District
Required with Firewood Removal Permit FS-2400-8

No firewood cutting areas identified. See permit for further restrictions.

Please refer to the Custer Gallatin National Forest Motor Vehicle Use Maps (MVUM) for current open roads and trails

Gardiner - Map Ten

