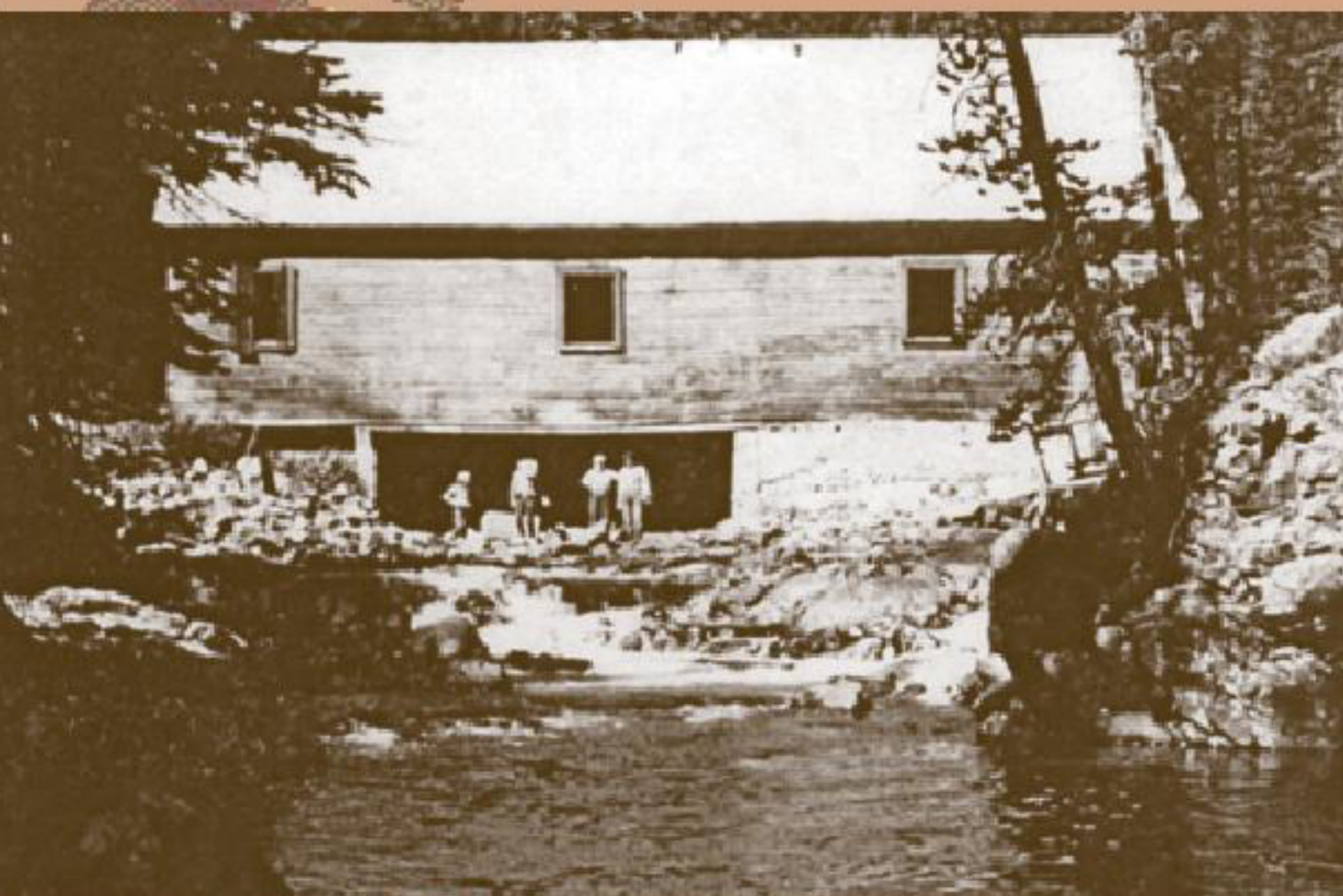


# THE ELECTRIC REVOLUTION



A view of the Western Smelting and Power Company's hydroelectric power plant, circa 1920s.  
~ Photo courtesy of Joan Humiston Collection

The debris below you is the remains of the Western Smelting and Power Company's hydroelectric generating plant. Built in 1916, the 250-kilowatt power plant supplied electricity to the company's mining operations located on Henderson Mountain, about three miles northwest of here.

The power plant was originally planned to provide electricity to operate the company's copper smelter, however the smelter did not come on-line until 1921. In the meantime, the relatively inexpensive electricity was used to modernize mining operations and revolutionize life in the nearby mining camps. The alternating current (AC) electricity was used to power generators, air drills, and compressors, and to power the company's blacksmith shop and tramway, and to light the mine tunnels. Several nearby cabins and a boarding house also had power.



A view (photo to the right) of the Western Smelting and Power Company's hydroelectric power plant from above, circa 1920s. The 250-kilowatt water power plant generated enough electricity to power 2,500, 100-watt light bulbs.  
~ Photo courtesy of Joan Humiston Collection

GALLATIN National Forest



Western Smelting and Power Company Smelter (Smelter, Assay House, Sampling Plant, Furnace Building, and Blower House) on Fisher Creek circa 1920s.

