



Kootenai National Forest

Cabinet Ranger District

Robin Run Trail #784

Clark Fork River Area (South side of the river)



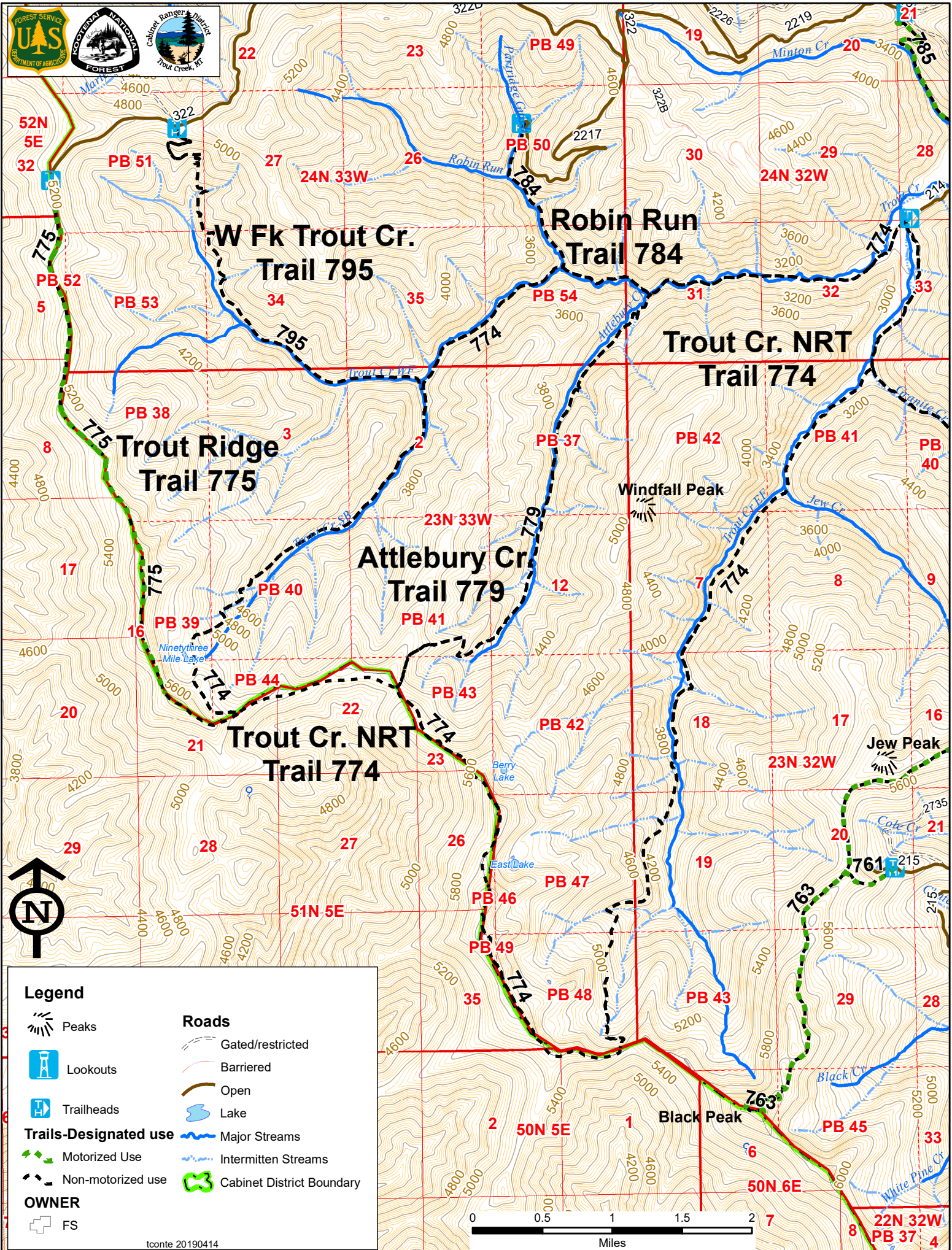
OVERVIEW	Robin Run Trail #784 is a relatively short trail that intersects the middle section of the more remote Trout Creek Recreation Trail #774. Once on trail #774 multiple loop hiking opportunities exist. .
LENGTH OF TRAIL	1.3 miles one way
ELEVATION	Beginning: 3505' Ending: 3049' Net loss: 456'
DIFFICULTY	Moderate
FACILITIES	There is sufficient parking at the trailhead for multiple vehicles, however FSR 2217 has one severe switchback that is not passable to vehicles with trailers. Vehicles with trailers are encouraged to park at the junction of FSR #322 and FSR #2217 and travel the two miles to the trailhead on FSR #2217.
DIRECTIONS	From Trout Creek, MT travel west on Pine Street for approximately 1.5 miles. Continue straight on Marten Creek Road for approximately 4.5 miles and turn left onto Minton Peak Road/FSR #322. Continue approximately 7 miles on FSR #322 to the junction with FSR #2217. Follow FSR #2217 two miles to the trailhead.
TRAIL CONDITIONS	Robin Run Trail #784 is a Trail Class 3 trail. The trail tread and corridor will be very well defined and visible. The trail is scheduled to be cleared every year. Please contact Cabinet Ranger Station for current trail conditions.
USGS MAP(S)	Bloom Peak #108
TRAILHEAD LAT/LONG	47.814 -115.776
STREAM CROSSINGS	Robin Run Trail #784 crosses a couple small side streams that can be crossed all times of the year.
RESTRICTIONS AND CONSIDERATIONS	<p><u>No motorized vehicles.</u></p> <p>Properly possess and store all food, refuse, and other attractants pursuant to Kootenai National Forest Food Storage Order (CFR 261.58 (cc)).</p> <p>Please <i>Pack-in-Pack out</i> and <i>Leave-No-Trace</i>.</p>



Kootenai National Forest, Cabinet Ranger District

2693 Highway 200, Trout Creek, MT 59874 / (406) 827-3533 / (406) 827-0718 fax / www.fs.fed.us/r1/kootenai

The U.S. Department of Agriculture (USDA) prohibits discrimination in its programs on the basis of race, color, national origin, sex, religion, age, disability, political beliefs, and marital or familial status. (Not all prohibited bases apply to all programs.) Persons with disabilities who require alternative means of communication of program information (braille, large print, audiotape, etc.) should contact USDA's TARGET Center at (202) 720-2600 (voice and TDD). To file a complaint, write the Secretary of Agriculture, U.S. Department of Agriculture, Washington, DC 20250, or call 1-800-245-6340 (voice) or (202) 720-1127 (TDD). USDA is an equal opportunity employer.



Legend



Peaks



Lookouts

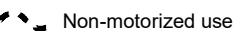


Trailheads

Trails-Designated use



Motorized Use



Non-motorized use

Roads



Gated/restricted



Barriered



Open



Lake



Major Streams



Intermittent Streams



Cabinet District Boundary

OWNER



FS

