



# Kootenai National Forest

## Cabinet Ranger District

### Trout Ridge Trail #775

Clark Fork River Area (South side of the river)



#### OVERVIEW

Trout Ridge Trail #775 follows the Montana/Idaho border at the head end of the Trout Creek Roadless Area offering spectacular views of the Clark Fork and Coeur d'Alene River valleys. Open road systems access both ends of the trail with Trout Creek National Recreation Trail #774 intersecting the trail on the southern end offering loop hiking opportunities.

#### LENGTH OF TRAIL

5 miles one way

#### ELEVATION

North-to-South: Beginning: 5226' Ending: 5689' Net gain: 463'

#### DIFFICULTY

Moderate

#### FACILITIES

The north trailhead is located on FSR 322 at the Montana/Idaho border. There is a large parking and turn around area. The southern trailhead is on an Idaho Panhandle National Forest road and is located at an overlook to 93 Mile Lake. Be advised this road is very narrow and rough (rocky).

#### DIRECTIONS

For the northern trailhead, from Trout Creek travel west on Marten Creek Road for approximately seven miles. Turn left onto Minton Peak Road/FSR 322 and travel approximately 13 miles to the trailhead on the Montana/Idaho border. Contact the Idaho Panhandle National Forest for directions to the southern trailhead.

#### TRAIL CONDITIONS

Trout Ridge Trail #775 is a Trail Class 3 trail. The trail tread and corridor will be very well defined and visible. The trail is scheduled to be cleared every three years. Be advised the trail follows an open ridgeline in some places where there is minimal tread. Please contact Cabinet Ranger Station for current trail conditions.

#### USGS MAP(S)

Bloom Peak #108

#### TRAILHEAD LAT/LONG

North trailhead: 47.809 -115.849 South trailhead: 47.758 -115.833

#### STREAM CROSSINGS

No stream crossings.

#### RESTRICTIONS AND CONSIDERATIONS

**Motorized vehicles:** Motorcycle use is allowed on Trout Ridge Trail #775.

Properly possess and store all food, refuse, and other attractants pursuant to Kootenai National Forest Food Storage Order (CFR 261.58 (cc)).

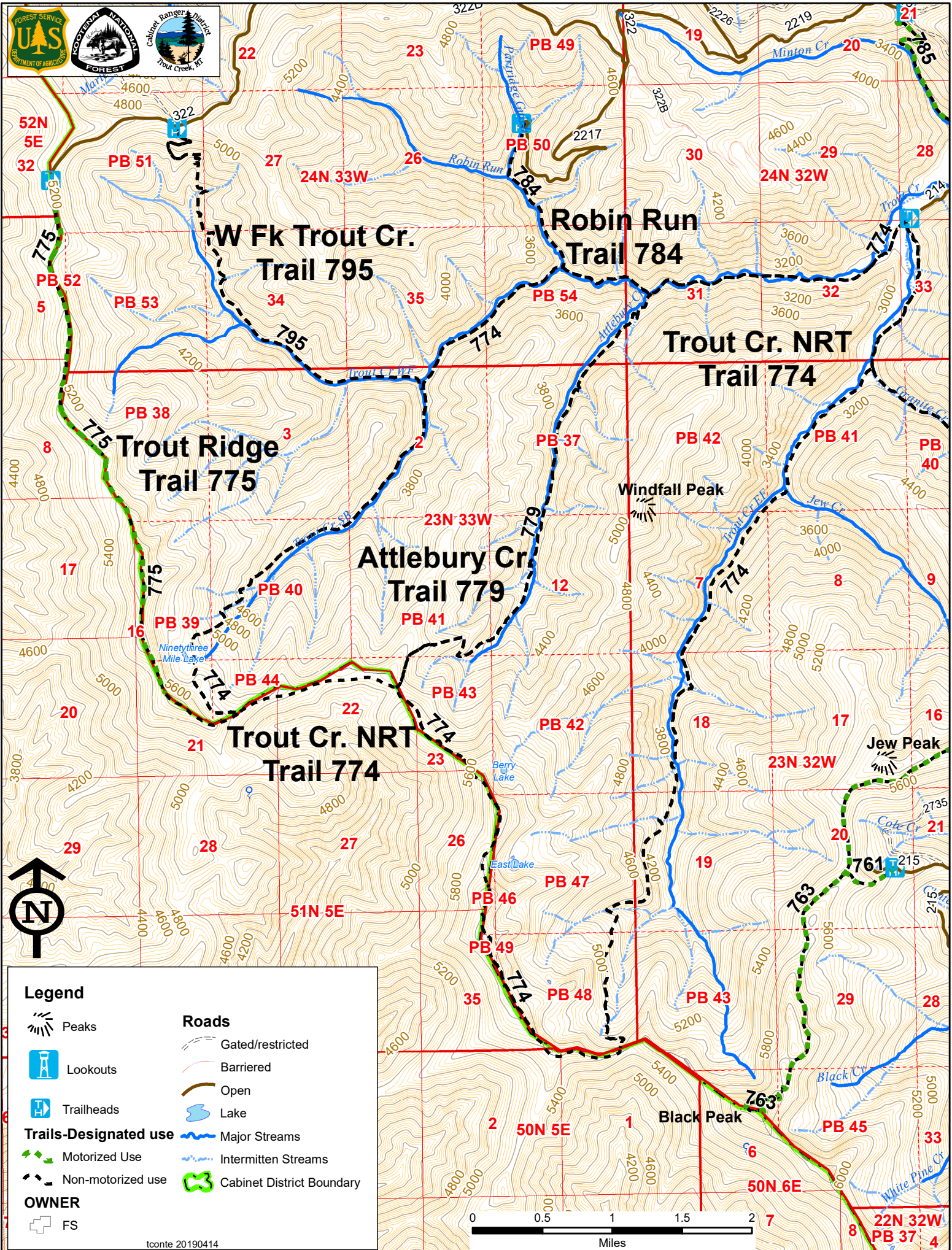
Please *Pack-in-Pack out* and *Leave-No-Trace*.



Kootenai National Forest, Cabinet Ranger District

2693 Highway 200, Trout Creek, MT 59874 / (406) 827-3533 / (406) 827-0718 fax / [www.fs.fed.us/r1/kootenai](http://www.fs.fed.us/r1/kootenai)

The U.S. Department of Agriculture (USDA) prohibits discrimination in its programs on the basis of race, color, national origin, sex, religion, age, disability, political beliefs, and marital or familial status. (Not all prohibited bases apply to all programs.) Persons with disabilities who require alternative means of communication (braille, large print, audiotape, etc.) should contact USDA's TARGET Center at (202) 720-2600 (voice and TDD). To file a complaint, write the Secretary of Agriculture, U.S. Department of Agriculture, Washington, DC 20250, or call 1-800-245-6340 (voice) or (202) 720-1127 (TDD). USDA is an equal opportunity employer.



**Legend**



Peaks



Lookouts

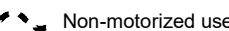


Trailheads

**Trails-Designated use**



Motorized Use



Non-motorized use

**Roads**



Gated/restricted



Barriered



Open



Lake



Major Streams



Intermittent Streams



Cabinet District Boundary

**OWNER**



FS

