



Kootenai National Forest

Cabinet Ranger District

Swamp Creek Trail #912 and Buck Lake Trail #912A

Cabinet Mountains Wilderness Trail



OVERVIEW

This Cabinet Mountains Wilderness trail follows Swamp Creek drainage to Lost Buck Pass, and Trail #912A ends at Buck Lake. From Lost Buck Pass, Lake Creek Trail #656 drops into Upper and Lower Geiger Lakes, and South Divide Trail #360S follows a major ridgeline out to the southern boundary of the Cabinet Mountains Wilderness. Buck Lake Trail #912A ends at Buck Lake where there are a couple dispersed campsites and the lake contains small cutthroat trout.

LENGTH OF TRAIL

Swamp Creek Trail #912: 12.13 miles one way
Buck lake Trail #912A: .38 miles one way

ELEVATION

Beginning: 2686' Ending: 4389' at Buck Lake. 5907' at Lost Buck Pass
Net gain: 1703' to Buck Lake. 3221' to Lost Buck Pass.

DIFFICULTY

More difficult

FACILITIES

Parking is available at the trailhead at the end of FSR 1119. The parking area is sufficient to turn around a large horse trailer and a hitch rail is available.

DIRECTIONS

From MT Hwy 200, just west of milepost 27, turn north onto Swamp Creek Road. Travel approximately 4 miles to the end of the road and the trailhead.

TRAIL CONDITIONS

Both Swamp Creek Trail #912 and Buck Lake Trail #912A are Trail Class 3 trails. The trail tread and corridor will be very well defined and visible. Trail #912 up to the junction with #912A is cleared every year. The portion of Trail #912 up to Lost Buck Pass is cleared every three years. Trail #912A is cleared every year. Please contact Cabinet Ranger Station for current trail conditions.

USGS MAP(S)

Howard Lake #89, Goat Peak #102

TRAILHEAD LAT/LONG

47.917 -115.616

STREAM CROSSINGS

The trail crosses Swamp Creek at approximately the 8 mile mark. This is a major stream crossing that can be challenging and dangerous for most of the year. There are other minor stream crossings that usually do not pose any major difficulties for travelers.

RESTRICTIONS AND CONSIDERATIONS

No motorized or mechanized vehicles.

Properly possess and store all food, refuse, and other attractants pursuant to Kootenai National Forest Food Storage Order (CFR 261.58 (cc)).

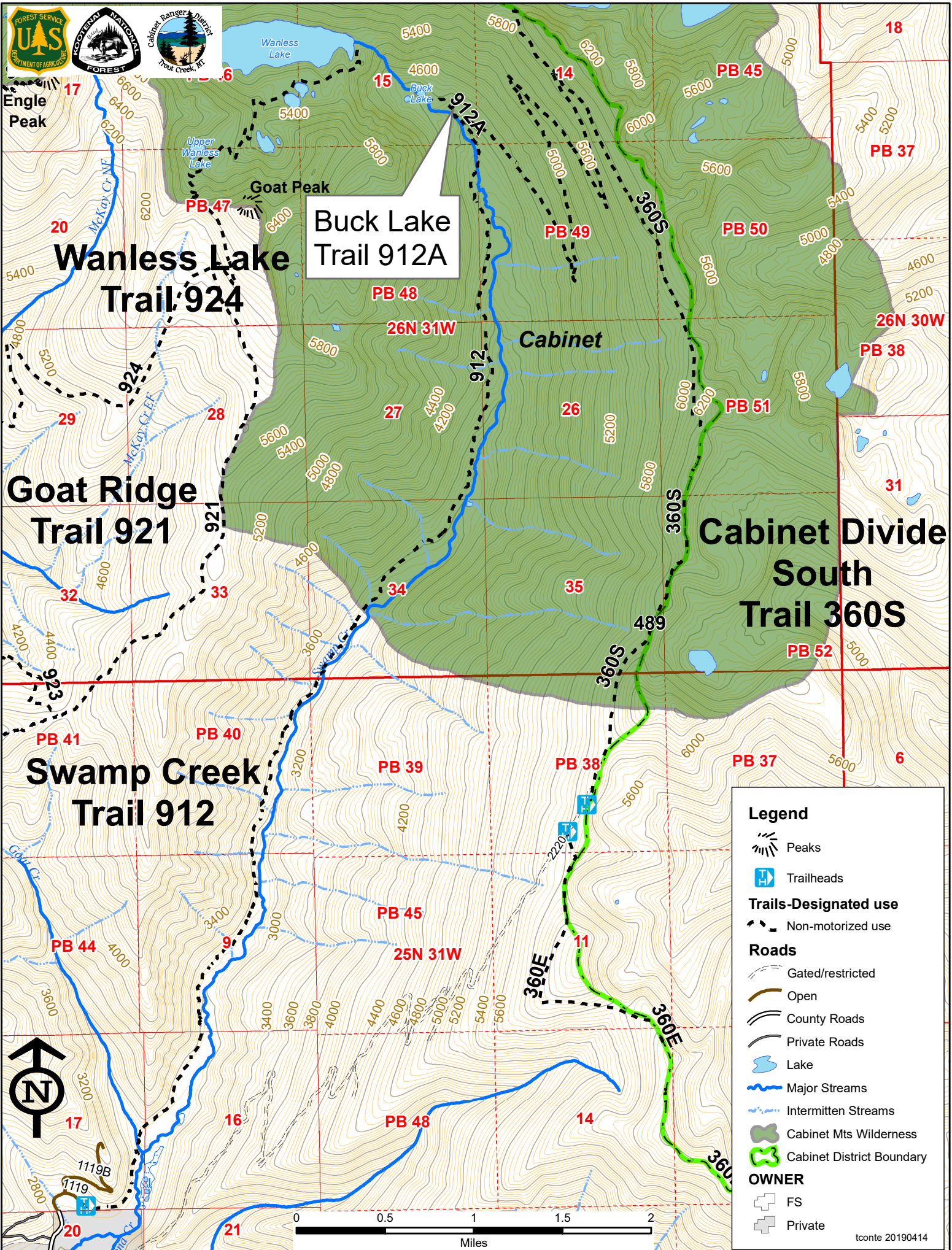
Please practice *Pack-in-Pack-out* and *Leave-No-Trace* ethics.



Kootenai National Forest, Cabinet Ranger District

2693 Highway 200, Trout Creek, MT 59874 / (406) 827-3533 / (406) 827-0718 fax / www.fs.fed.us/r1/kootenai

The U.S. Department of Agriculture (USDA) prohibits discrimination in its programs on the basis of race, color, national origin, sex, religion, age, disability, political beliefs, and marital or familial status. (Not all prohibited bases apply to all programs.) Persons with disabilities who require alternative means of communication of program information (braille, large print, audiotape, etc.) should contact USDA's TARGET Center at (202) 720-2600 (voice and TDD). To file a complaint, write the Secretary of Agriculture, U.S. Department of Agriculture, Washington, DC 20250, or call 1-800-245-6340 (voice) or (202) 720-1127 (TDD). USDA is an equal opportunity employer.



Buck Lake Trail 912A

Legend

- Peaks
- Trailheads
- Trails-Designated use**
 - Non-motorized use
- Roads**
 - Gated/restricted
 - Open
 - County Roads
 - Private Roads
- Lake
- Major Streams
- Intermittent Streams
- Cabinet Mts Wilderness
- Cabinet District Boundary
- OWNER**
 - FS
 - Private

tconte 20190414

