



Kootenai National Forest

Cabinet Ranger District

Hamilton Gulch Trail #1019

Clark Fork River Area (north side of the river)



OVERVIEW

Hamilton Gulch Trail #1019 follows Hamilton Gulch for short ways then progresses upslope until the trail ends approximately 1 mile to the northeast of Billard Table Mountain (6622'). Some adventurous hikers proceed up to Billard Table and the ridgeline out to Star Peak.

LENGTH OF TRAIL

2.5* miles one way. (*the trail departs Dry Creek Trail #1020 at the 1.5 mile mark making this trail 4 miles in length)

ELEVATION

Beginning: 2400' Ending: 5160' Net gain: 2760'

DIFFICULTY

Moderate

FACILITIES

No traditional trailhead exists for this trail. The "start" of the trail is at the junction with Dry Creek Trail #1020.

DIRECTIONS

From Highway 56 milepost 12.5, turn west onto FSR 1118. The trailhead for Dry Creek Trail #1020 is located 50 yards from the highway. Hamilton Gulch Trail #1019 departs Dry Creek Trail #1020 at the 1.5 mile mark.

TRAIL CONDITIONS

Hamilton Gulch Trail #1019 is a Trail Class 2 trail. Users should expect some blowdown, brush, and minimal tread. The trail is scheduled to be cleared every five years. Please contact Cabinet Ranger Station for current trail conditions.

USGS MAP(S)

Ibex Peak #82, Sawtooth Mountain #83

TRAILHEAD LAT/LONG

Dry Creek Trail #1020: 48.152 -115.870

STREAM CROSSINGS

No stream crossings. Be advised Dry Creek Trail #1020 crosses Dry Creek ¼ mile from the trailhead. This crossing can be challenging during high runoff.

RESTRICTIONS AND CONSIDERATIONS

No motorized use.

No mechanized vehicles.

Stock use: Not recommended due to occasional blowdown, brush and tread condition.

Properly possess and store all food, refuse, and other attractants pursuant to Kootenai National Forest Food Storage Order (CFR 261.58 (cc)).

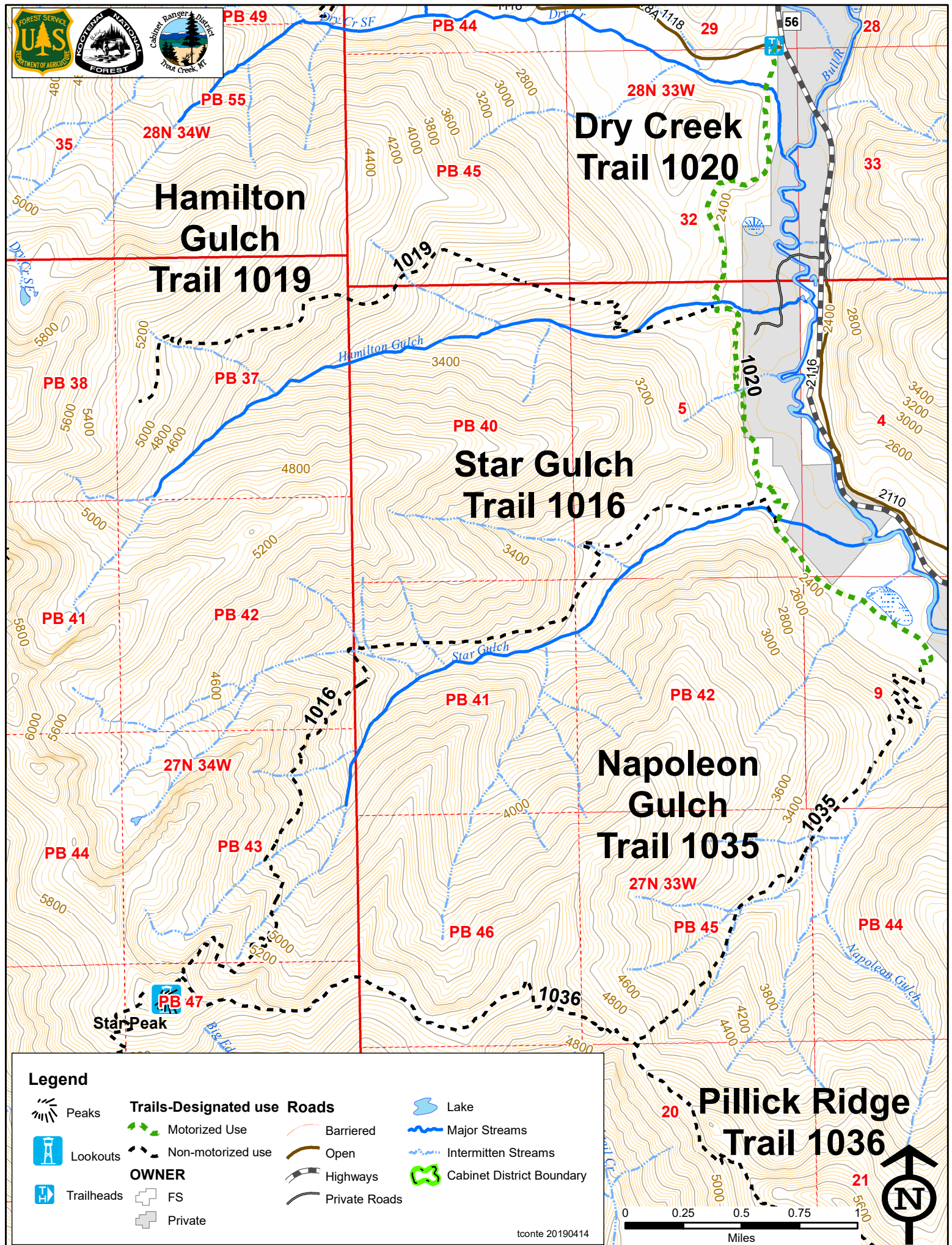
Please practice *Pack-in-Pack-out* and *Leave-No-Trace* ethics.



Kootenai National Forest, Cabinet Ranger District

2693 Highway 200, Trout Creek, MT 59874 / (406) 827-3533 / (406) 827-0718 fax / www.fs.fed.us/r1/kootenai

The U.S. Department of Agriculture (USDA) prohibits discrimination in its programs on the basis of race, color, national origin, sex, religion, age, disability, political beliefs, and marital or familial status. (Not all prohibited bases apply to all programs.) Persons with disabilities who require alternative means of communication of program information (braille, large print, audiotape, etc.) should contact USDA's TARGET Center at (202) 720-2600 (voice and TDD). To file a complaint, write the Secretary of Agriculture, U.S. Department of Agriculture, Washington, DC 20250, or call 1-800-245-6340 (voice) or (202) 720-1127 (TDD). USDA is an equal opportunity employer.



**Hamilton
Gulch
Trail 1019**

**Dry Creek
Trail 1020**

**Star Gulch
Trail 1016**

**Napoleon
Gulch
Trail 1035**

**Pillick Ridge
Trail 1036**

Legend

- | | | | |
|------------|------------------------------|---------------|---------------------------|
| Peaks | Trails-Designated use | Barriered | Lake |
| Lookouts | Motorized Use | Open | Major Streams |
| Trailheads | Non-motorized use | Highways | Intermittent Streams |
| | OWNER | Private Roads | Cabinet District Boundary |
| | FS | | |
| | Private | | |

tconte 20190414

