



# Kootenai National Forest

## Cabinet Ranger District

### Rock Lake Trail #935

Cabinet Mountains Wilderness Trail



(with restrictions)



#### OVERVIEW

This popular Cabinet Mountains Wilderness trail leads to Rock Lake. The trail follows an old mining road for the first three miles to the historic Heidelberg Mine then single track tread climbs the last mile to Rock Lake. Views of mountain peaks, waterfalls and alpine meadows can be seen from the trail and lake. Occasionally moose can be seen in Rock Creek Meadows and mountain goats can often be seen around Rock Lake. A couple dispersed campsites exist in the meadows and at the lake. Cutthroat trout can be found in the lake also.

#### LENGTH OF TRAIL

4.1 miles one way

#### ELEVATION

Beginning: 3257' Ending: 4965' Net gain: 1708'

#### FACILITIES

Ample parking is available vehicles and horse trailers at the trailhead at the end of FSR 150A.

#### DIRECTIONS

From MT Hwy 200 milepost 17, turn east onto FSR 150. Travel approximately 6 miles to FSR 150A. Turn right onto FSR 150A and continue approximately 1.5 miles to the end of the road and the trailhead.

#### TRAIL CONDITIONS

Rock Lake Trail #935 is a Trail Class 3 trail. The trail tread and corridor will be very well defined and visible. The trail is scheduled to be cleared every year. Please contact Cabinet Ranger Station for current trail conditions.

#### USGS MAP(S)

Elephant Peak #88, Howard Lake 389

#### TRAILHEAD LAT/LONG

48.040 -115.680

#### STREAM CROSSINGS

Numerous stream crossings exist on the trail. All the major stream crossings have bridges with the exception of a major crossing less than a ¼ mile from the trailhead. This stream crossing can be difficult and dangerous to negotiate during peak runoff.

#### RESTRICTIONS AND CONSIDERATIONS

**No motorized vehicles.**

**Mechanized use:** No mechanized use within the wilderness boundary.

Cabinet Mountains Wilderness has limits on the number of persons and stock when traveling in parties. You can learn more about wilderness by visiting [Wilderness.net](http://Wilderness.net)

Properly possess and store all food, refuse, and other attractants pursuant to Kootenai National Forest Food Storage Order (CFR 261.58 (cc)).

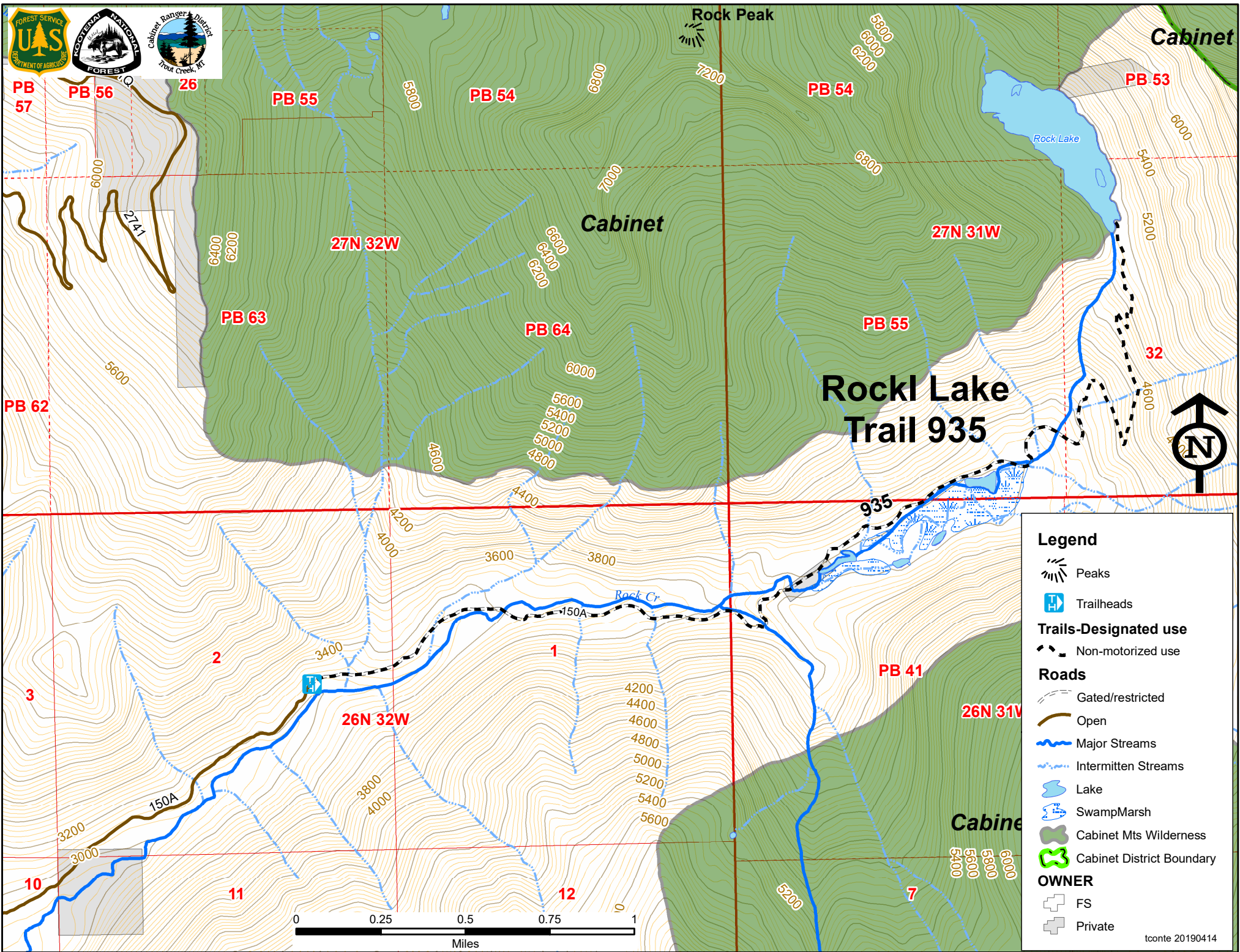
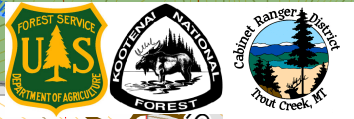
Please practice *Pack-in-Pack-out* and *Leave-No-Trace* ethics.



Kootenai National Forest, Cabinet Ranger District

2693 Highway 200, Trout Creek, MT 59874 / (406) 827-3533 / (406) 827-0718 fax / [www.fs.fed.us/r1/kootenai](http://www.fs.fed.us/r1/kootenai)

The U.S. Department of Agriculture (USDA) prohibits discrimination in its programs on the basis of race, color, national origin, sex, religion, age, disability, political beliefs, and marital or familial status. (Not all prohibited bases apply to all programs.) Persons with disabilities who require alternative means of communication (braille, large print, audiotape, etc.) should contact USDA's TARGET Center at (202) 720-2600 (voice and TDD). To file a complaint, write the Secretary of Agriculture, U.S. Department of Agriculture, Washington, DC 20250, or call 1-800-245-6340 (voice) or (202) 720-1127 (TDD). USDA is an equal opportunity employer.



**Legend**

- Peaks
- Trailheads
- Trails-Designated use**
- Non-motorized use
- Roads**
- Gated/restricted
- Open
- Major Streams
- Intermittent Streams
- Lake
- Swamp/Marsh
- Cabinet Mts Wilderness
- Cabinet District Boundary
- OWNER**
- FS
- Private

