



Kootenai National Forest

Cabinet Ranger District

Grouse Creek Trail #852

Clark Fork River Area (north side of the river)



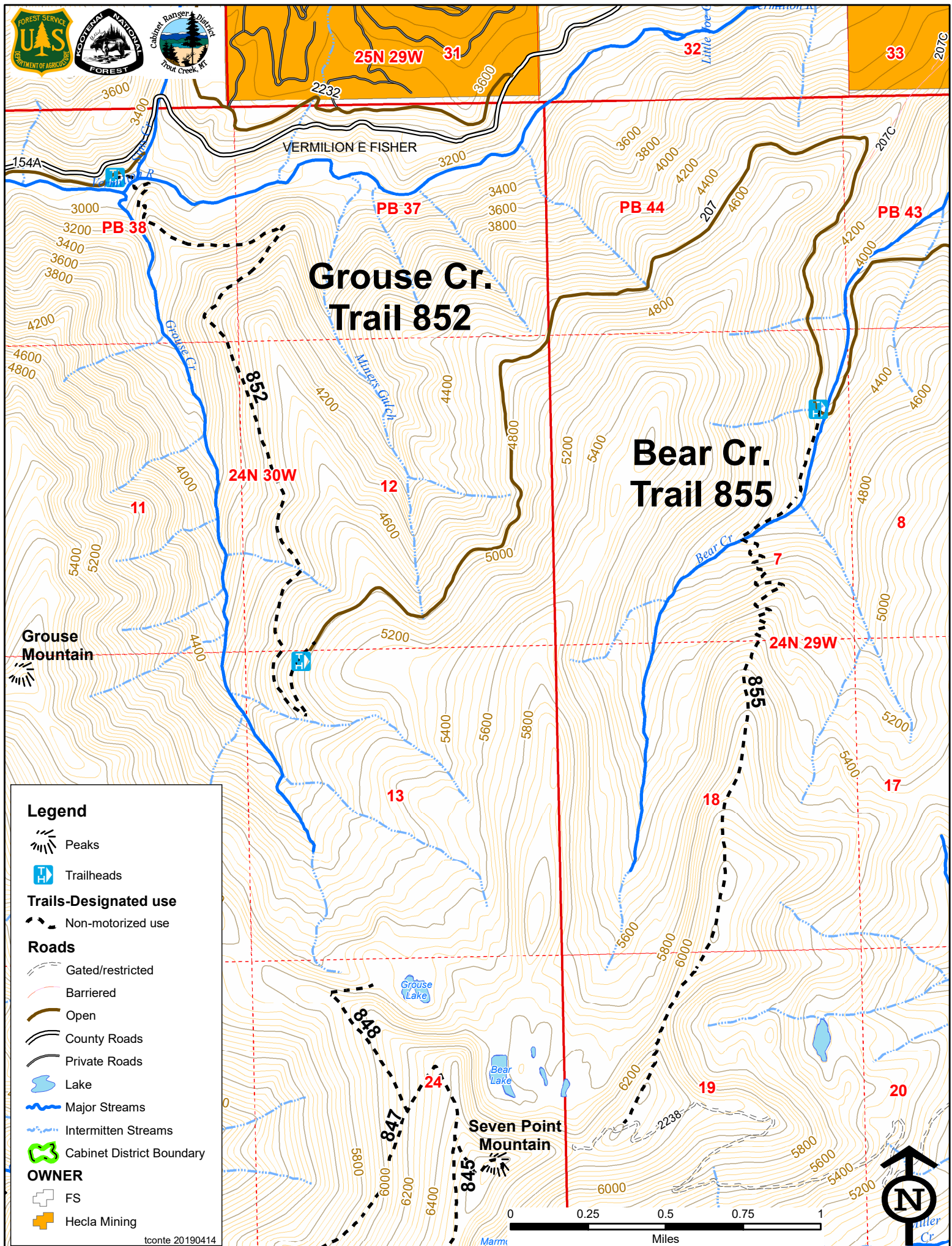
OVERVIEW	Grouse Creek Trail #852 starts at the confluence of Grouse Creek and Vermilion River and ends approximately halfway up the Grouse Creek drainage on FSR 207.
LENGTH OF TRAIL	3 miles one way.
ELEVATION	Beginning: 2984' Ending: 5063' Net gain: 2079'
DIFFICULTY	Moderate
FACILITIES	There is a sufficient parking for vehicles with trailers at the lower trailhead. The upper trailhead has room for 1-2 parked vehicles and is not sufficient for vehicles with trailers.
DIRECTIONS	From MT Hwy 200 milepost 28 (approximately) turn east on the Blue Slide Road. Travel approximately 4 miles to Vermilion East Fisher Road/FSR 154. Travel approximately 9.5 miles to the junction of FSR 154 and FSR 154A. The trailhead is at the end of FSR 154A.
TRAIL CONDITIONS	Grouse Creek Trail #852 is a Trail Class 2 trail. Users should expect some blowdown, brush, and minimal tread. The trail is scheduled to be cleared every five years. Please contact Cabinet Ranger Station for current trail conditions.
USGS MAP(S)	Seven Point Mountain #111
TRAILHEAD LAT/LONG	Lower trailhead: 47.870 -115.405 Upper trailhead: 47.848 -115.393
STREAM CROSSINGS	The trail crosses the Vermilion River at the lower trailhead. The crossing is challenging most times of the year.
RESTRICTIONS AND CONSIDERATIONS	<p><u>No motorized use.</u></p> <p>Properly possess and store all food, refuse, and other attractants pursuant to Kootenai National Forest Food Storage Order (CFR 261.58 (cc)).</p> <p>Please practice <i>Pack-in-Pack-out</i> and <i>Leave-No-Trace</i> ethics.</p>



Kootenai National Forest, Cabinet Ranger District

2693 Highway 200, Trout Creek, MT 59874 / (406) 827-3533 / (406) 827-0718 fax / www.fs.fed.us/r1/kootenai

The U.S. Department of Agriculture (USDA) prohibits discrimination in its programs on the basis of race, color, national origin, sex, religion, age, disability, political beliefs, and marital or familial status. (Not all prohibited bases apply to all programs.) Persons with disabilities who require alternative means of communication of program information (braille, large print, audiotape, etc.) should contact USDA's TARGET Center at (202) 720-2600 (voice and TDD). To file a complaint, write the Secretary of Agriculture, U.S. Department of Agriculture, Washington, DC 20250, or call 1-800-245-6340 (voice) or (202) 720-1127 (TDD). USDA is an equal opportunity employer.



**Grouse Cr.
Trail 852**

**Bear Cr.
Trail 855**

Legend

- Peaks
- Trailheads
- Trails-Designated use**
- Non-motorized use
- Roads**
- Gated/restricted
- Barriered
- Open
- County Roads
- Private Roads
- Lake
- Major Streams
- Intermittent Streams
- Cabinet District Boundary
- OWNER**
- FS
- Hecla Mining

