



# Kootenai National Forest

## Cabinet Ranger District

### Engle Peak Trail #926

Cabinet Mountains Wilderness Trail



(not recommended)



(not recommended/with restrictions)

#### OVERVIEW

This Cabinet Mountains Wilderness trail leads to Engle Lake Trail #932, intersecting the trail on the ridgeline approximately 1.5 miles west of Engle Peak. Engle Lake Trail #932 continues on to Engle Lake, and Engle Lake Trail #932A ends at Engle Peak (elevation 7583'). Engle Peak Trail #926 receives very little use and crosses numerous old skid trails and roads.

#### LENGTH OF TRAIL

3.9 miles one way

#### ELEVATION

Beginning: 2728' Ending: 6217' Net gain: 3489'

#### DIFFICULTY

Moderate

#### FACILITIES

Parking available at trailhead along FSR1022. The trail leaves FSR1022 from the western edge of the parking area. Be advised there is not sufficient space at the trailhead parking area to turn around large horse trailers. Most stock users turn around and park at the junction of FSR 1022 and FSR 2287, and then ride one mile of FSR 1022 to the trailhead.

#### DIRECTIONS

From MT Hwy 200 approximately milepost 18 turn east onto FSR 1022 which is directly opposite Noxon Rapids Dam entrance road. Continue on FSR 1022 approximately 3 miles to the trailhead.

#### TRAIL CONDITIONS

Engle Peak Trail #926 is a Trail Class 2 trail. Users should expect some blowdown, brush, and minimal tread. The trail is scheduled to be cleared every five years. Please contact Cabinet Ranger Station for current trail conditions.

#### USGS MAP(S)

Elephant Peak #88, Noxon Rapids Dam #103

#### TRAILHEAD LAT/LONG

47.973 -115.671

#### STREAM CROSSINGS

None

#### RESTRICTIONS AND CONSIDERATIONS

**No motorized vehicles.**

**Mechanized vehicles:** allowed from the trailhead on FSR 1022 to mile post 2.2 on Engle Peak Trail #926 (junction with FSR 2287). Not recommended due to occasional blowdown, brush and tread condition.

**Stock use:** Not recommended due to occasional blowdown, brush and tread condition.

Properly possess and store all food, refuse, and other attractants pursuant to Kootenai National Forest Food Storage Order (CFR 261.58 (cc)).

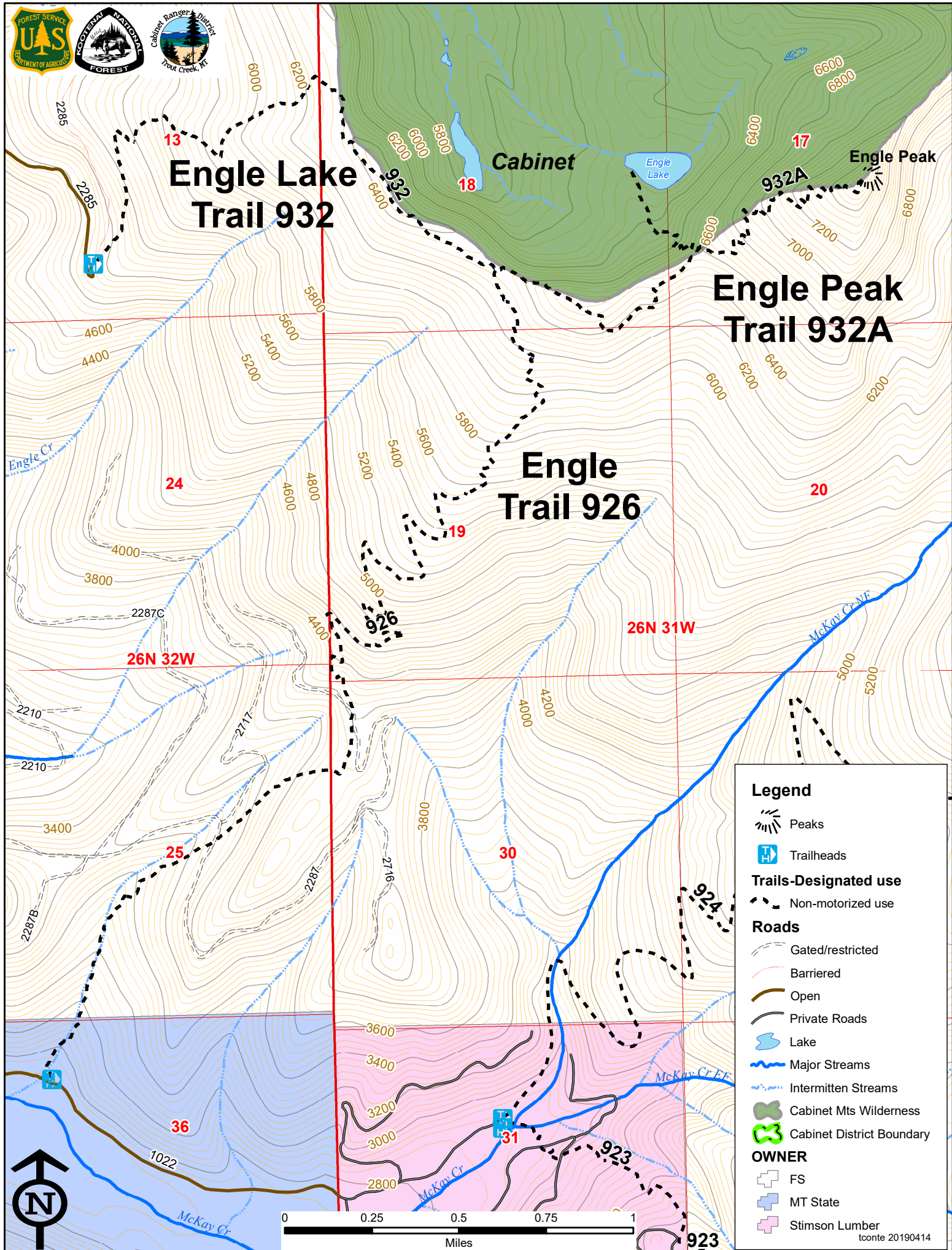
Please practice *Pack-in-Pack-out* and *Leave-No-Trace* ethics.



Kootenai National Forest, Cabinet Ranger District

2693 Highway 200, Trout Creek, MT 59874 / (406) 827-3533 / (406) 827-0718 fax / [www.fs.fed.us/r1/kootenai](http://www.fs.fed.us/r1/kootenai)

The U.S. Department of Agriculture (USDA) prohibits discrimination in its programs on the basis of race, color, national origin, sex, religion, age, disability, political beliefs, and marital or familial status. (Not all prohibited bases apply to all programs.) Persons with disabilities who require alternative means of communication of program information (braille, large print, audiotape, etc.) should contact USDA's TARGET Center at (202) 720-2600 (voice and TDD). To file a complaint, write the Secretary of Agriculture, U.S. Department of Agriculture, Washington, DC 20250, or call 1-800-245-6340 (voice) or (202) 720-1127 (TDD). USDA is an equal opportunity employer.



**Engle Lake Trail 932**

**Engle Peak Trail 932A**

**Engle Trail 926**

**Legend**

- Peaks
- Trailheads
- Trails-Designated use**
  - Non-motorized use
- Roads**
  - Gated/restricted
  - Barriered
  - Open
  - Private Roads
- Lake
- Major Streams
- Intermittent Streams
- Cabinet Mts Wilderness
- Cabinet District Boundary
- OWNER**
  - FS
  - MT State
  - Stimson Lumber

tconte 20190414

