



# Kootenai National Forest

## Cabinet Ranger District

### Sims Creek Trail #881

Clark Fork River Area (north side of the river)



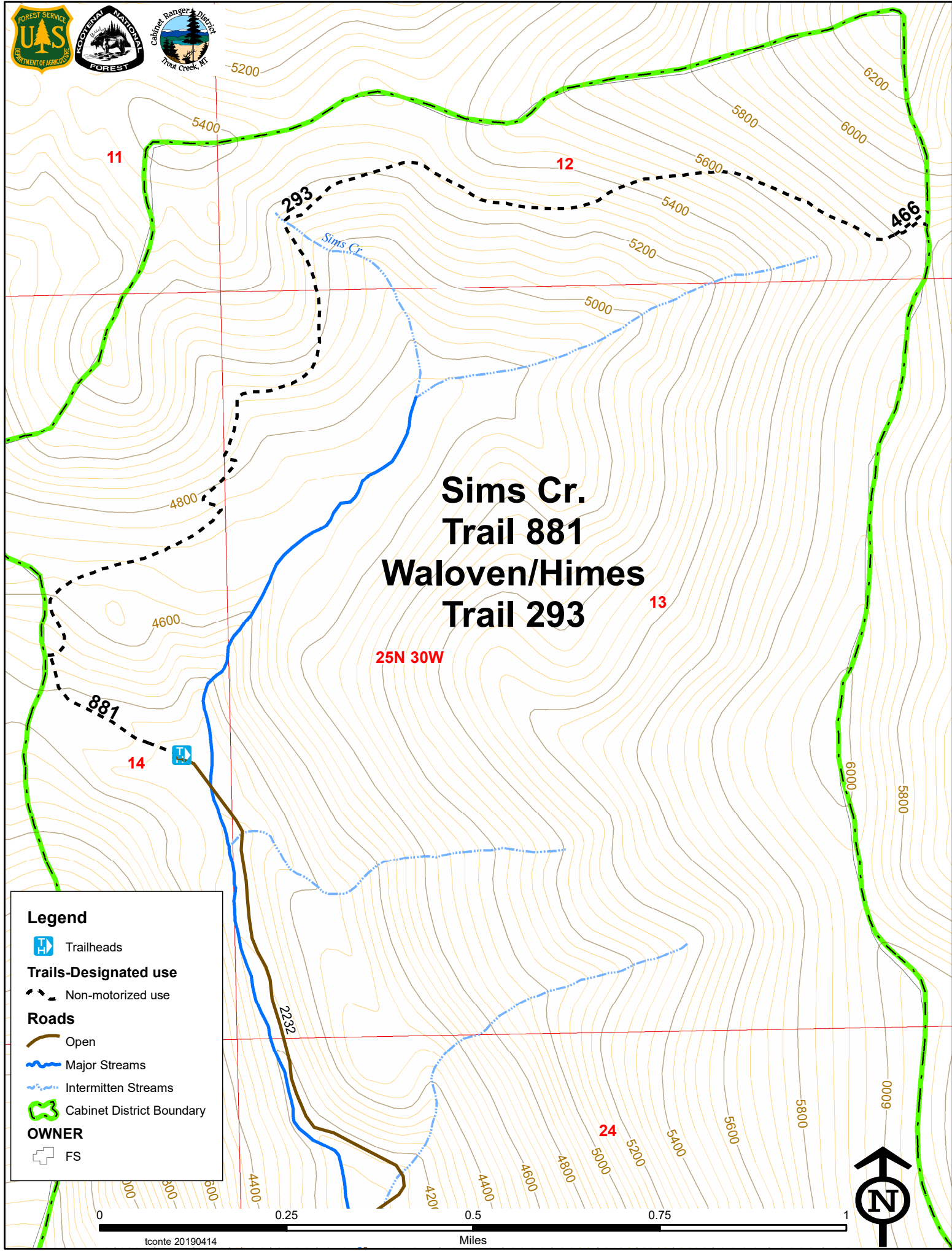
OVERVIEW	Sims Creek Trail #881 is a short trail that connects into Libby Ranger District Himes/Walovine Trail #293.
LENGTH OF TRAIL	.3 mile one way.
ELEVATION	Beginning: 4313' Ending: 4467' Net gain: 154'
DIFFICULTY	Easy
FACILITIES	Be advised FSR 2232 is very rough and high clearance vehicles are recommended. There is ample room at the trailhead for parking vehicles, however vehicles with trailers are advised to park at the FSR 2232/FSR 154 junction.
DIRECTIONS	From MT Hwy 200 milepost 28 (approximately) turn east on the Blue Slide Road. Travel approximately 4 miles to FSR 154. Turn left onto FSR 154 and travel 9 miles to the junction with FSR 2232. The trailhead is at the end of FSR 2232.
TRAIL CONDITIONS	Sims Creek Trail #881 is a Trail Class 2 trail. Users should expect some blowdown, brush, and minimal tread. The trail is scheduled to be cleared every five years. Please contact Cabinet Ranger Station for current trail conditions.
USGS MAP(S)	Silver Butte Pass #101
TRAILHEAD LAT/LONG	47.922 -115.422
STREAM CROSSINGS	No stream crossings
RESTRICTIONS AND CONSIDERATIONS	<p><b><u>No motorized use.</u></b></p> <p>Properly possess and store all food, refuse, and other attractants pursuant to Kootenai National Forest Food Storage Order (CFR 261.58 (cc)).</p> <p>Please practice <i>Pack-in-Pack-out</i> and <i>Leave-No-Trace</i> ethics.</p>



#### Kootenai National Forest, Cabinet Ranger District

2693 Highway 200, Trout Creek, MT 59874 / (406) 827-3533 / (406) 827-0718 fax / [www.fs.fed.us/r1/kootenai](http://www.fs.fed.us/r1/kootenai)

The U.S. Department of Agriculture (USDA) prohibits discrimination in its programs on the basis of race, color, national origin, sex, religion, age, disability, political beliefs, and marital or familial status. (Not all prohibited bases apply to all programs.) Persons with disabilities who require alternative means of communication of program information (braille, large print, audiotape, etc.) should contact USDA's TARGET Center at (202) 720-2600 (voice and TDD). To file a complaint, write the Secretary of Agriculture, U.S. Department of Agriculture, Washington, DC 20250, or call 1-800-245-6340 (voice) or (202) 720-1127 (TDD). USDA is an equal opportunity employer.



**Sims Cr.  
Trail 881  
Waloven/Himes  
Trail 293**

**25N 30W**

**Legend**

- Trailheads
- Trails-Designated use**
- Non-motorized use
- Roads**
- Open
- Major Streams
- Intermittent Streams
- Cabinet District Boundary
- OWNER**
- FS

