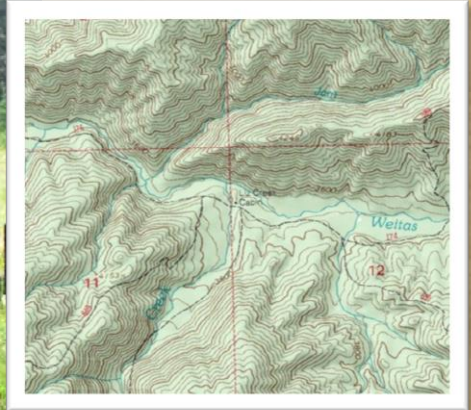




CABIN FOR RENT



LOCATED NEAR THE CONFLUENCE OF LIZ CREEK AND WEITAS CREEK ON THE NORTH FORK RANGER DISTRICT -- ADVENTURE AWAITS!

Liz Creek Cabin For Rent

The Perfect Setting

- rustic romance or “gone fishin” with the guys
- enjoy some of Idaho’s finest and most pristine backcountry
- hike, pedal or ride your horse or motorcycle to reach this boondock bungalow – there’s no vehicle or ATV access
- nearby OHV routes, and plenty of fresh mountain air

The Cabin:

- Liz Creek Cabin was built in 1929 as a remote, Forest Service guard station
- the site offers few amenities - guests should bring their own supplies and gear
- the cabin has a small porch for watching summer sunsets, and a loft, to sleep a little closer to the stars

Contact:

North Fork Ranger Station
 Le Ann Wilson, (208) 476-8267
leannwilson@fs.fed.us

Rates:

\$40 per night; six nights, maximum
 Available July 15 - September 15
 Visit www.recreation.gov or call
 (877) 444-6777 for reservations

