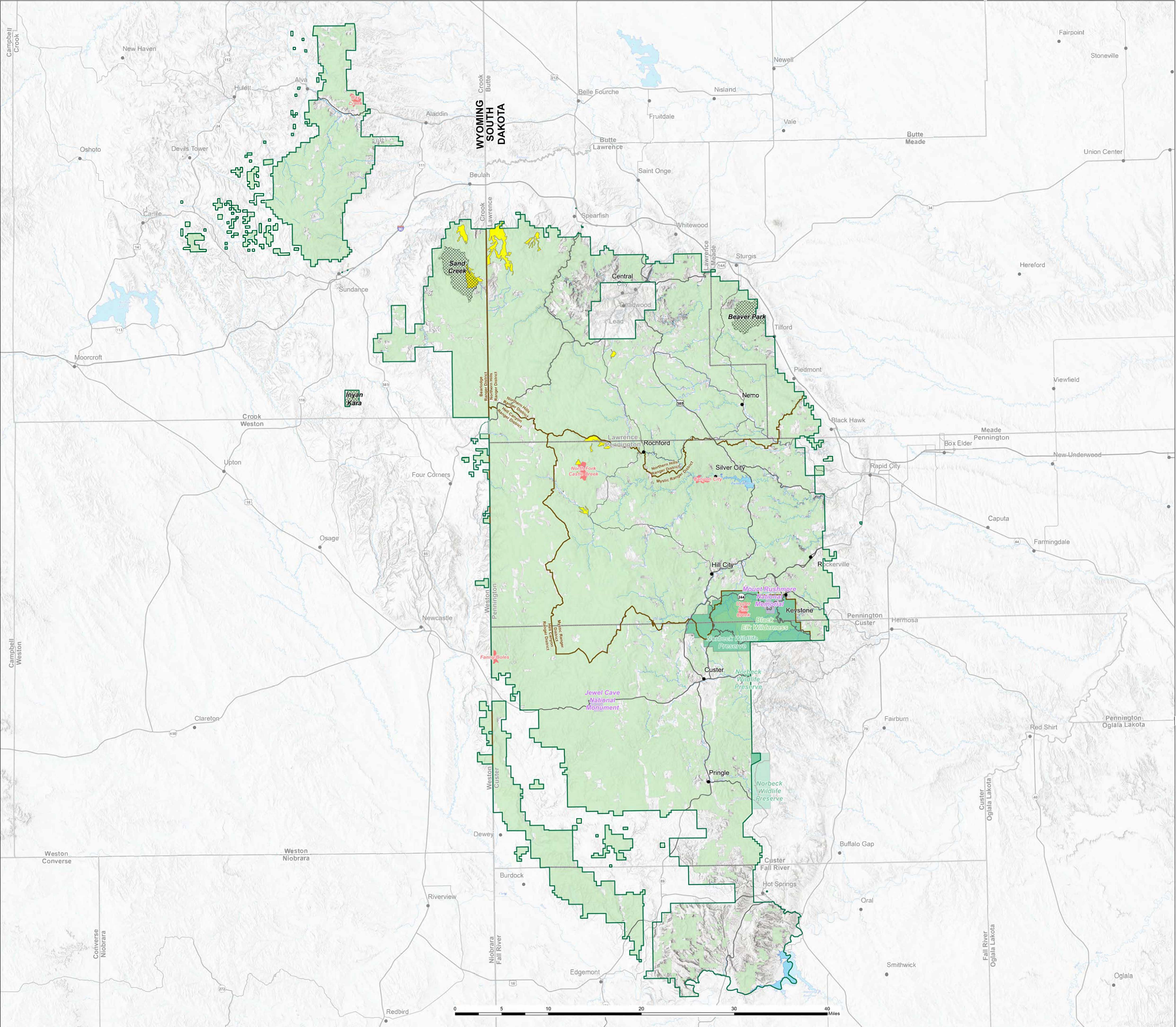
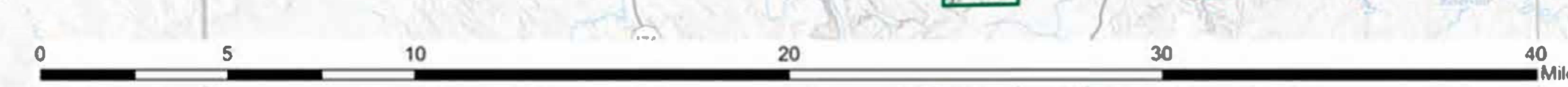


Black Hills National Forest Forest Plan Revision Designated Areas



- Town/City
- Black Hills Forest Boundary
- Ranger District Boundary
- Botanical Area
- Research Natural Area (RNA)
- ▨ Roadless Area
- Norbeck Wildlife Preserve
National Game Refuge
- Wilderness Area
- Land Ownership
- Private
- US Forest Service (USFS)
- National Park Service (NPS)



ATTENTION

This product is reproduced from geospatial information prepared by the U.S. Department of Agriculture, Forest Service. GIS data and product accuracy may vary. They may be derived from sources of differing accuracy, accurate only at certain scales, based on unverified data, or based on data that is not current. The Forest Service reserves the right to correct, update, modify, or replace GIS products based on new information, new or revised information, and/or necessary to conform with other federal, state, or local public agencies or the public in general as required by policy or regulation. The accuracy of the products may not be notified unless required by policy or regulation.

16/2022
Coordinate System: NAD 1983 UTM Zone 13N
Created by: USFS R2 Plan Revision Support Team
GIS Specialist