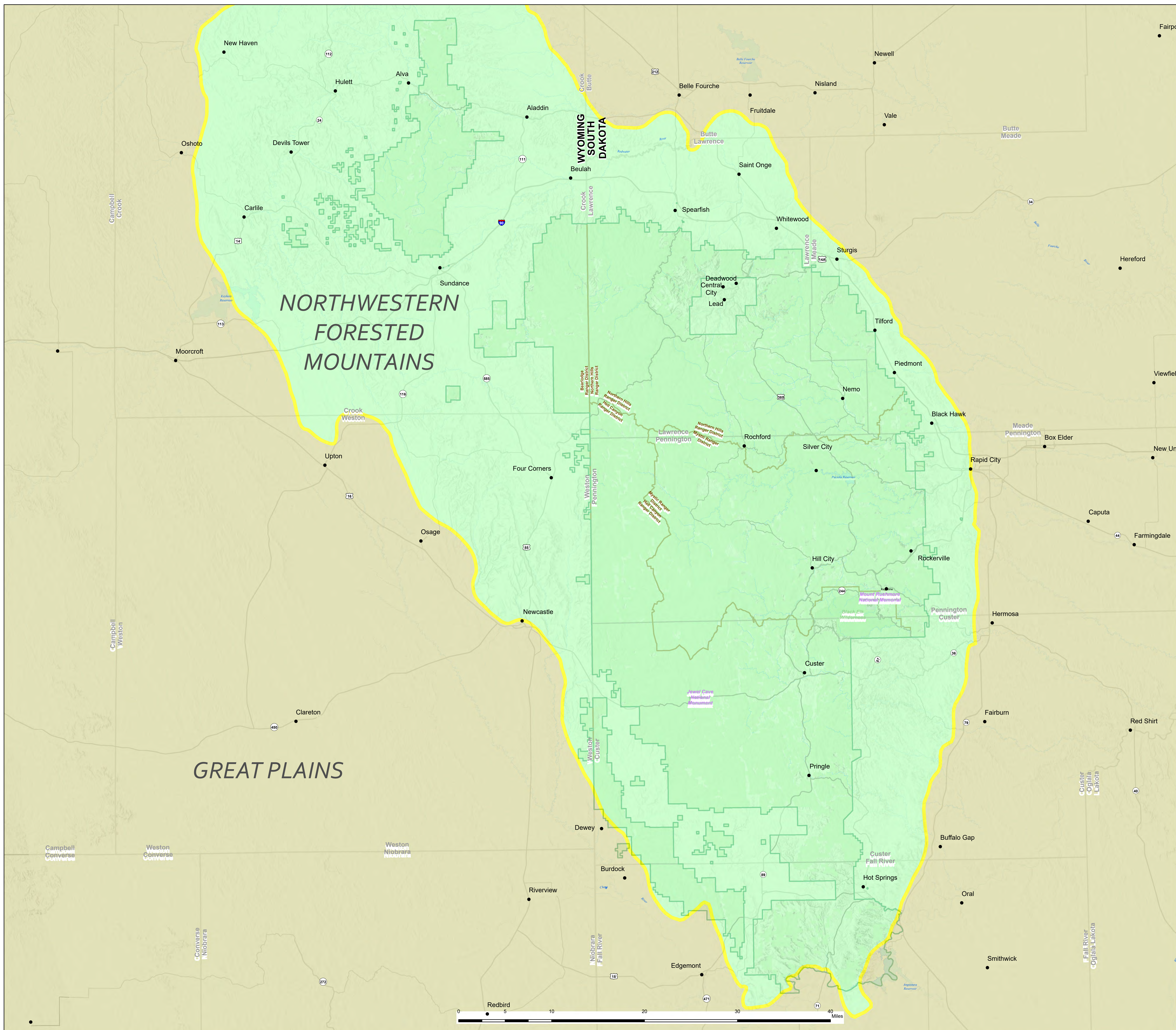




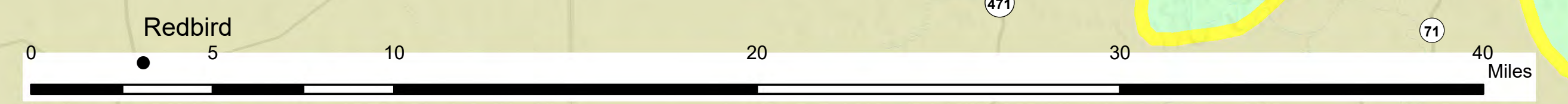
Black Hills National Forest Forest Plan Revision Land Ownership



- Town/City
- ▭ Black Hills Forest Boundary
- ▭ Ranger District Boundary
- ▭ Wilderness Area
- ▭ Eco-Region
- ▭ GREAT PLAINS
- ▭ NORTHWESTERN FORESTED MOUNTAINS

Land Ownership

- ▭ National Park Service (NPS)
- ▭ Private
- ▭ US Forest Service (USFS)



ATTENTION

This product is reproduced from geospatial information prepared by the U.S. Department of Agriculture, Forest Service. GIS data and product accuracy may vary. They may be developed from sources of differing accuracy, accurate only at certain scales, based on modeling or interpretation, incomplete while being created or revised, etc. Using GIS products for purposes other than those for which they were created, may yield inaccurate or misleading results. The Forest Service reserves the right to correct, update, modify, or replace GIS products based on new inventories, new or revised information, and if necessary in conjunction with other federal, state or local public agencies or the public in general as required by policy or regulation. Previous recipients of the products may not be notified unless required by policy or regulation.

3/3/2022
Coordinate System: USFS R2 Plan Revision Support Team
NAD 1983 UTM Zone 13N
GIS Specialist

Created by:
USFS R2 Plan Revision Support Team
GIS Specialist