

Visitor Guide



The Medicine Bow and Routt National Forests were established as “Forest Reserves” in the early 20th Century by President Theodore Roosevelt. In 1995 these national forests were administratively combined with the Thunder Basin National Grassland.

Today the MBRTB includes almost 2.9 million acres of National Forest System lands managed for multiple uses and public enjoyment. These units provide a diverse mix of wildlife habitat, timber, livestock forage, vast mineral resources, and a vital source of water for irrigation and domestic use. Additionally, they offer diverse, year-round outdoor recreation opportunities.

The Medicine Bow-Routt National Forests extend from north central Colorado to central Wyoming. The National Forests encompass portions of many mountain ranges, including Gore Range, Flat Tops, Parks Range, Elkhead Mountains, Medicine Bow Mountains, Sierra Madre Range, and Laramie Range. The topography varies greatly with elevations ranging from 5,500 to 12,940 feet. The climate ranges from semiarid at low elevations to colder and less arid in the high country.

The Thunder Basin National Grassland is located in northeastern Wyoming in the Powder River Basin between the Big Horn Mountains and the Black Hills. Elevation on the National Grassland ranges from 3,600 to 5,200 feet, and the climate is semi-arid.

The MBRTB has six offices, one for each district. The Supervisor’s Office is in Laramie and is co-located with the Laramie Ranger District. The unit also has offices in Douglas and Saratoga, Wyo., as well as Steamboat Springs, Walden and Yampa, Colo. Many on-the-ground activities occur on the ranger districts, including trail construction and maintenance, operation of campgrounds, and management of vegetation and wildlife habitat.

Recreation Opportunities

BICYCLING

Cycling is a great way to travel through National Forest System lands. There are hundreds of miles of trails and roads accessible by mountain or road bikes on the Medicine Bow-Routt National Forests and Thunder Basin National Grassland, as well as a number of winter trails suitable for fat biking. These remote, winding roads and trails are ideal for cycling and trails take riders on an exploratory journey.

All classes of E-bike are considered motorized vehicles on the MBRTB. Recreationists should use Motorized Vehicle Use Maps to plan routes that use roads and trails suitable for motorized travel. Bicycles are **not** permitted in wilderness.

BOATING AND RAFTING

Come spend a hot summer day on the water on the Medicine Bow-Routt National Forests and Thunder Basin National Grassland! With few exceptions, boating is limited to non-motorized watercraft. Any boat with a motor or sail operated on public waters must be registered with Colorado Parks and Wildlife or with Wyoming Game and Fish. Additionally, both Colorado and Wyoming require invasive species inspections for some or all watercraft.



CAMPING AND CABINS

There are a variety of camping opportunities on the national forests and national grassland. From cabin rentals to dispersed camping, opportunities abound. While electric, sewer, water hook-ups and showers are not available, most designated campgrounds have potable water, picnic tables, fire rings, and vault toilets.

- *Dispersed Camping* - Camping outside of developed campgrounds is allowed in many areas on the MBRTB. Regulations allow for camping up to 16 days in Wyoming and 14 days in Colorado. In some areas, dispersed camping is only permitted in designated dispersed sites. Learn more about dispersed camping.
- *Group Camping* - Reservations are required for all group campgrounds on the MBRTB. Reservations can be made on recreation.gov.

CLIMBING

Many of the superb climbing destinations across the Medicine Bow and Routt National Forests are regionally and nationally recognized. The forests provide many exciting routes for everyone, ranging from beginners to the most seasoned climbers. Many areas provide opportunities for trad, crag, top rope, and free solo climbing, as well as bouldering.



FISHING AND HUNTING

Secluded mountain lakes and streams await anglers year-round. Many different species of trout are present and provide numerous opportunities for fishing. The forests contain a variety of game ranges and habitat. Big game on the forests include elk, moose, mule deer, white-tailed deer, pronghorn antelope, bighorn sheep, and black bear. A license is required to hunt in both Colorado and Wyoming. Licenses may be purchased from state game departments and some local retailers.

For more information on fishing and hunting licenses, game units, and seasons, visit Colorado Parks & Wildlife or Wyoming Game & Fish.



HIKING

Whether day hiking or backpacking, you'll find many opportunities on the Medicine Bow-Routt National Forests and Thunder Basin National Grassland. Hundreds of miles of trail wind through backcountry wilderness, developed recreation areas, and everything in between.

Recreation Opportunities

HORSE RIDING AND CAMPING

The forests and grassland offer many trails suitable for horseback riding. Riders can explore millions of acres of beautiful scenery on multi-use trails. Horses are not allowed in developed campgrounds but may be kept adjacent to them in Wyoming, and in a few select campgrounds in Colorado. Only certified weed-free hay or processed feed may be brought onto National Forest System lands. Only processed feed may be used in wilderness areas. Tree-saver straps for picket lines and portable corrals are recommended.



OHV RIDING AND CAMPING

Motor vehicle travel is allowed only on designated trails and roads on the Medicine Bow-Routt National Forests. Off-road and off-trail travel is prohibited. [Motor Vehicle Use Maps](#) provide useful guidance to make sure that your recreation is in compliance with Medicine Bow-Routt National Forests and Thunder Basin National Grassland regulations.

All OHV vehicles and over-snow vehicles must have a current state registration. For Wyoming OHV information [click here](#), for Colorado OHV information [click here](#).

PICNICKING

There are many developed day use picnic areas available for use across the forests and grassland. They provide serene and peaceful opportunities to enjoy lunch, host a get together, or simply rest. Some require reservations or fees, but many do not. Overnight camping is not allowed in picnic areas unless otherwise noted, though many are very close to camping areas.

RECREATIONAL MINING

Limited collection of rocks and minerals for personal use is allowed on most National Forest System lands, excluding archaeological and historic sites and collection of fossils and artifacts. These materials may be collected without a permit provided the collecting is for personal, hobby, and noncommercial use. Learn more about [Mineral, Rock Collecting, and Metal Detecting on the National Forests](#). For detailed information about gold panning, dredging, and mining claims, see our [Gold Panning and Dredging Information](#) pamphlet.

SCENIC DRIVING AND NATURE VIEWING

There are countless scenic drives on the Medicine Bow-Routt National Forests and Thunder Basin National Grassland, including three Scenic Byways. Hundreds of miles of dirt and paved roads wind through thickly forested areas that change with every season, around exposed rock faces revealing millions of years of history, and across open spaces that reveal the vast open spaces that characterize the American West.

The national forests and grassland span millions of acres, offering many opportunities for unique and beautiful nature viewing. From mountain peaks to wide open spaces, visitors can expect stunning, unique views at every turn. The forests and grassland provide habitat for many diverse flora and fauna, and overlooks and scenic views can be reached by trail or by simply pulling off paved roads.



SKIING AND SNOWBOARDING

Traveling through the snow on skis or snowshoes is a popular, peaceful way to view winter wildlife and the national forest or national grassland. Cross-country skiing and snowshoeing opportunities are numerous across the area. Visitors will find several developed ski areas and countless opportunities for undeveloped backcountry skiing and snowboarding.

SNOWMOBILING

With deep powder and miles of groomed trails the Medicine Bow-Routt National Forests offer some of the best snowmobiling opportunities in the nation. View trail maps to plan your winter adventure in [Colorado](#) or [Wyoming](#). Permits and registration are required to operate a snowmobile in both Colorado and Wyoming.

Make sure you are operating legally by visiting the [Colorado Parks & Wildlife Snowmobile Registration](#) or [Wyoming State Parks Snowmobile Permits & Fees](#) sites. Always check [Motor Vehicle Use Maps](#) for road and trail information. *Snowmobiles are **not** permitted in wilderness.*

Know Before You Go

RECREATION PASSES

Many areas on the forests and grassland may be visited for free, but some areas require a day use fee for user recreation. Fees for these areas may be paid onsite using fee envelopes, Scan & Pay, or purchased online ahead of time. Additionally, there are options for local and national day use passes that cover fees for an entire year. These options are outlined in detail below. Some recreation activities may also require state-regulated fees, such as hunting, fishing, OHV riding snowmobiling, and boating.

MBRTB Annual Day Use Passes - \$30.00

- *Digital Option, available online*
 - Valid for one year from purchase date (365 days)
 - Registered to license plate
- *Physical Pass, available in-office*
 - Valid one calendar year (January 1 to December 31)
 - Hang tag for display on rear-view mirror

America The Beautiful Passes

Valid for admission at over 2,000 federal recreation sites across the country. Passes are available at our offices or online through the USGS store.

- *Interagency Annual Pass - \$80.00*
 - Acceptable one year from month of purchase
 - Pass is available to the general public
 - Covers entrance and standard recreation fees.
- *Interagency Senior Annual/Lifetime Pass - \$20.00/\$80.00*
 - Available to seniors 62 years and older
 - May entitle pass holder to 50% off of certain fees - check with each agency
- *Interagency Access Pass - Free*
 - Available to citizens with permanent disabilities. Proof of disability required at time of request
 - May entitle pass holder to 50% off of certain fees - check with each agency
- *Interagency Military Pass - Free*
 - Annual option available to current U.S. military members and their dependents and veterans
 - Lifetime option available to Gold Star Families
- *Interagency 4th Grade Pass - Free with voucher*
 - Available to U.S. 4th grade students with valid Every Kid Outdoors voucher - everykidoutdoors.gov
- *Interagency Volunteer Pass - Free*
 - Awarded to individuals who volunteer 250+ hours at one or more recreation sites managed by the Forest Service, National Park Service, Bureau of Land Management, Bureau of Reclamation, or US Fish and Wildlife Service.

MAPS AND PUBLICATIONS

Many maps and publications are available to provide visitors with information. Visitor information maps are available as plastic coated maps or digital, geo-referenced Avenza maps that show roads and highways, cities, bodies of water, recreational sites, campgrounds, trails, private and public land designations, and more. These maps are \$14 for print and \$5 for digital editions. Free Motor Vehicle Use Maps (MVUMs) show motorized roads, trails, and seasonal closures and are available for free as downloads and at ranger district offices. Physical maps are available at all offices, as well as online.

OUTDOOR SAFETY AND ETHICS

Click to learn about beetle-kill, food storage, Leave No Trace, and more!



FOREST PRODUCT AND SPECIAL USE PERMITS

The public may harvest a range of forest products from the Medicine Bow-Routt National Forests, including firewood, tree and plant transplants, posts and poles, herbaceous plants, Christmas trees, ferns, and mushrooms. Forest product permits allow the public the opportunity to harvest for recreational and personal use. Permits enable the MBRTB to better manage these resources for future generations while serving today's public with affordable products.

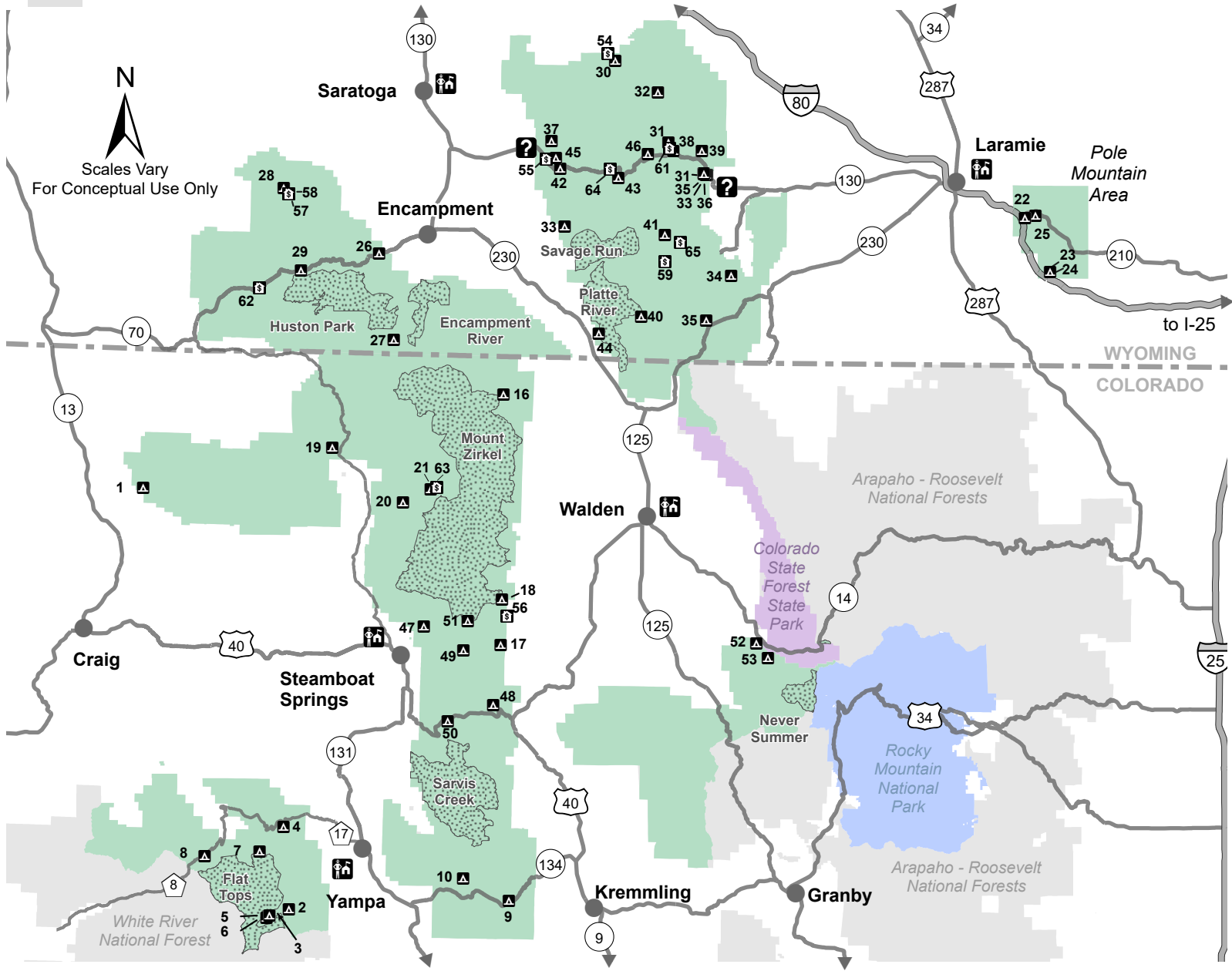
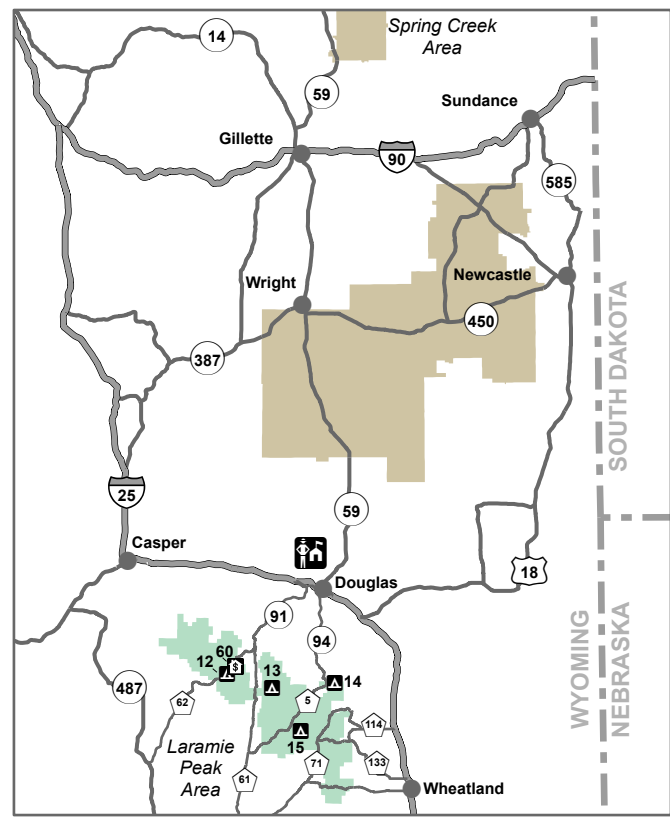
Recreation, commercial, and event permits allow us to serve the people in a variety of ways. From outfitting to ski clinics, from fishing contests to bike races, special use permits are required to ensure safe enjoyment of your public lands. Outfitters and guides, commercial recreational events, events with groups over 75 people, and activities such as commercial filming or photography require a permit from the district on which the activity occurs. For more information on special use permits, visit our Special Uses site.

Area Map

Medicine Bow - Routt National Forests
Thunder Basin National Grassland



- Medicine Bow - Routt National Forests
- Thunder Basin National Grassland
- Wilderness (with name)
- Rocky Mountain National Park
- Other National Forest
- Colorado State Forest State Park
- A Campground
- R Ranger District Office
- ? Visitor Center
- \$ Cabin Rental



Campgrounds

On Map	Site Name	Reservable?	Elevation	# of Sites	Max Length	Notes	Fee
California Park/Black Mountain Area							
1	Freeman Reservoir	No	8,800	17	25	F,B, (HP,E)	\$20
Flat Tops Area							
2	Bear Lake	No	9,700	43	30	A,F,B (HP,E)	\$20-\$40
3	Bear River Developed	No	9,200-10,200	26	Varies	F, No water or toilet	\$10
4	Chapman Reservoir	No	9,300	12	22	A,F,B (HP,E), No water	\$20
5	Cold Springs	No	10,200	5	30	A, F	\$20
6	Horseshoe	No	10,100	7	25	F	\$20
7	Sheriff Reservoir	No	9,700	5	18	F,B (HP,E), No water	\$14
8	Vaughan Lake	No	9,500	6	18	F,B (HP,E), No water	\$20
Gore Range							
9	Blacktail Creek	No	9,000	8	22	F	\$20
10	Lynx Pass	No	9,000	11	18	A, F	\$20
Laramie Peak Area							
12	Campbell Creek	No	8,200	8	22	A, No water	\$20-\$40
13	Curtis Gulch	No	6,600	6	22	A, F	\$14
14	Esterbrook	No	6,500	12	22	A, No water	\$20-\$65
15	Friend Park	No	7400	11	22	A, No water	\$20
Mount Zirkel/Park Range Area							
16	Big Creek Lakes	Yes	9,000	54	45	F,B(HP,E,IC)	\$20
17	Hidden Lakes	No	8,900	9	50	F,B (HP,E)	\$20
18	Teal Lake	No	9,000	18	25	F,B (HP,E), G	\$20
North Routt County Area							
19	Hahns Peak Lake	Yes	8,500	25	40	F,B (HP,E)	\$26
20	Hinman Park	Yes	7,600	13	22	F	\$14
21	Seedhouse	Yes	8,000	24	02	F, G	\$26
Pole Mountain Area							
22	Tie City	Yes	8,600	17	32		\$20
23	Vedauwoo	No	8,200	47	32	A , 18 tent sites	\$20
24	Vedauwoo Dispersed	No	7,700-8,300	97	Varies	No water or toilet	Free
25	Yellow Pine	No	8,400	19	32		\$20
Sierra Madre Area							
26	Bottle Creek	Yes	8,800	16	45	F	\$20
27	Hog Park	Yes	8,400	50	30	F,B (HP,E,IC)	\$20
28	Jack Creek	Yes	8,500	16	22	F	\$14
29	Lost Creek	Yes	8,800	10	22	F	\$20
Snowy Range Area							
30	Bow River	Yes	8,600	13	32	F	\$14
31	Brooklyn Lake	No	10,500	19	22	F	\$20
32	Deep Creek	Yes	10,200	12	22	F	\$20
33	French Creek	Yes	8,000	11	32	F	\$14
34	Lake Owen	No	9,000	35	22	F,B (HP,E,IC)	\$20
35	Libby Creek Pine	No	8,600	6	16	F	\$14
36	Libby Creek Willow	No	8,600	16	22	F	\$20
37	Lincoln Park	Yes	7,800	12	32	A, F	\$20
38	Nash Fork	No	10,200	24	22	F	\$20
39	North Fork	No	8,600	60	30	F	\$20
40	Pelton Creek	No	8,100	14	16	F	\$14
41	Rob Roy	No	9,600	65	35	F,B (HP,E,IC)	\$20
42	Ryan Park	Yes	8,000	48	32	F	\$20
43	Silver Lake	Yes	10,400	17	32	F, B (HP)	\$20
44	Six Mile	Yes	8,000	9	32	F	\$20
45	South Brush Creek	Yes	7,900	20	32	F	\$20
46	Sugarloaf	Yes	10,700	16	22	F, B, (HP)	\$20

(A) Accessible site(s) and toilet(s) available; (F) Fishing; (G) Group Site

(B) Boating (HP=Hand-powered, (E) Electric Motors allowed, IC=Internal Combustion Motors allowed)

Steamboat Springs Area							
47	Dry Lake	Yes	8,000	8	16	No water	Closed
48	Dumont Lake	Yes	9,500	22	40	F, B (HP)	\$26
49	Granite	No	10,200	8	22	F,B (HP,E), No water	\$20
50	Meadows	Yes	9,300	30	40	No water	\$26
51	Summit Lake	No	10,300	16	18	F,B (HP), No water	\$20
Troublesome Gould Area							
52	Aspen	No	8,900	7	20	F	\$14
53	Pines	No	9,200	11	20	F	\$20-\$40

(A) Accessible site(s) and toilet(s) available; (F) Fishing; (G) Group Site
 (B) Boating (HP=Hand-powered, (E) Electric Motors allowed, IC=Internal Combustion Motors allowed

Cabins

On Map	Site Name	Elevation	Max Occupancy	Notes	Fee
54	Bow River Ranger Station	8,300	8	E, A, H	Closed
55	Brush Creek Work Center Barrack	8,100	8	E, W, H	Closed
56	Grizzly Creek Guard Station	8,500	5	H	\$55
57	Jack Creek Crew Quarters	8,400	15	E, W, H	\$225
58	Jack Creek Guard Station	8,400	4	W, H	\$80
59	Keystone Ranger Station	8,900	6	E, W, H	\$150
60	La Prele Guard Station	7,900	6	W, H	\$100
61	Little Brooklyn Guard Station	10,400	6	W, H, F	\$90
62	Sandstone Cabin	8,200	6	H	\$125
63	Seedhouse Guard Station	8,100	5	H	\$100
64	Snow Survey Cabin	10,100	4	H	\$80
65	Spruce Mtn Fire Lookout Tower	10,000	2	H	Closed

(E) Electricity; (W) Water; (A) Accessible; (H) Heat; All sites are reservable on [Recreation.gov](https://www.recreation.gov)

Wilderness Areas

Designated Wilderness Areas are managed to preserve their natural conditions and wild character for current and future generations. Use linked area titles to learn more.

HUSTON PARK

The Continental Divide National Scenic Trail, traverses the wilderness and offers panoramic, high country views of alpine bogs, spruce-fir, lodgepole pine and aspen forests.

SARVIS CREEK

Visitors may enjoy a tumbling waterfall, a moist meadow or historic logging camp remains by following the Sarvis Creek Trail and the Silver Creek Trail through rugged, heavily wooded terrain.

ENCAMPMENT RIVER

The Encampment River flows through a narrow rugged canyon and varies from narrow, rushing rapids to calm, smooth stretches. The hike along the river offers views of historical mines and cabins.

MOUNT ZIRKEL

Home to headwaters of the Elk, Encampment and North Platte Rivers and some 70 lakes, high mountain peaks and a portion of the Continental Divide National Scenic Trail.

SAVAGE RUN

Steep-sided canyons are located at low elevations while rolling, plateau-like terrain can be found at higher elevations. The Savage Run Trail traverses the wilderness along Savage Run Creek.

FLAT TOPS

Approximately 110 lakes and ponds dot the country above and below numerous flat-topped cliffs. Colorado's third largest wilderness is co-managed by Routt and White River National Forests.

PLATTE RIVER

The Platte River is a blue ribbon trout fishing stream and is a popular waterway for rafting and kayaking. North Gate Canyon is a popular white-water rafting section of water.

NEOTA, NEVER SUMMER, AND RAWAH

Shared by the Parks Ranger District with the Arapaho-Roosevelt National Forests, with access also possible from Rocky Mountain National Park and Colorado State Forest State Park.

Colorado Highlights

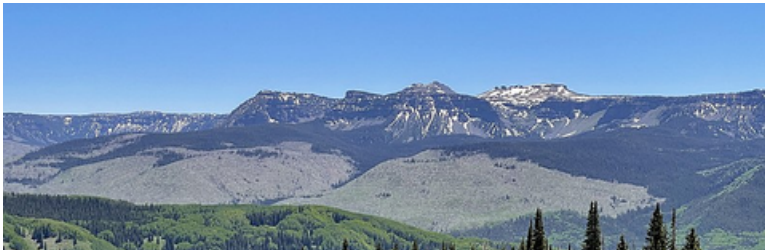
CALIFORNIA PARK/BLACK MOUNTAIN AREA

Bears Ears - The Bears Ears country is northeast of Craig. this area offers outstanding opportunities for hunting big game such as deer and elk. A scenic loop can be made by traveling Forest Road 110, County Road 82, and County Road 80 through California Park.

FLAT TOPS AREA

Pyramid Guard Station - The Guard Station and surrounding outbuildings were built in the mid-1930s by the Civilian Conservation Corps. While the building is not open to the public, this historic site represents the Forest Service's longstanding commitment to conservation. The site is located off County Route 8, between Duncley Pass and Ripple Pass.

Flat Tops Trail Scenic Byway - The Flat Tops Trail Scenic Byway, crosses the northern Flat Top Mountains between Yampa and Meeker. Approximately 40 miles of this 82-mile byway is gravel road with some hairpin turns and high passes. Bring your binoculars for the 2.5 hour trip. There are fantastic panoramic views and opportunities to see wildlife such as marmots, eagles, elk, mule deer, and grouse. Wildflowers fill the alpine meadows in June and July. The scenic byway is open June to October, weather permitting.



GORE RANGE AREA

Lynx Pass Campground - The 11 site campground and surrounding area offers outdoor enthusiasts an opportunity to enjoy the simple pleasure of being outside. The campground is surrounded in lodgepole pine offering mostly shade, with a secluded, natural and primitive feel and can accommodate tents, campers, and trailers. This campground is popular for big game hunting in the fall.

Sarvis Creek Trail - This 12.2 mile trail provides horse and hiking access into the Sarvis Creek Wilderness. Remnants of the Sarvis Timber Company's logging operations from over 100 years ago are still visible.

MOUNT ZIRKEL AREA

Big Creek Lakes - This popular recreation area is 35 miles northwest of Walden, Colorado. Lower Big Creek Lake Campground has a 54 unit campground on the shoreline, some of which are reservable on Recreation.gov. The Seven Lakes trailhead at the north end of the campground is one of the main gateways into the Mount Zirkel Wilderness. Seven Lakes is seven miles from the campgrounds, and the trail can also be used to access Upper Big Creek Lake and Big Creek Falls.

Mount Zirkel Wilderness - This Wilderness area is home to the headwaters of the Elk, Encampment, and North Platte Rivers, as well as some 70 lakes, high mountain peaks, including the 12,180 foot-tall Mount Zirkel for which it is named. Many trails and a portion of the Continental Divide National Scenic Trail may be used to explore the wilderness.



NORTH ROUTT COUNTY AREA

Big and Little Red Parks - Located 30 miles north of Steamboat Springs and just south of the Wyoming Border, this area provides ample opportunities for hiking, mountain biking, horseback riding, and OHV use with an extensive trail and road network. Several historic trails, such as the Ellis Trail (#1155) and Wyoming Trail (1101), are part of the area's mining and logging history.

Hahns Peak Lake - This scenic lake hosts a campground, boat dock, picnic area, and parking for access to winter trails. With an elevation of 8,500 feet, the campground offers spectacular views of the forested lakeshore, picturesque mountain lake and the 10,774-foot Hahns Peak. Families and outdoor enthusiasts love the abundant hiking, mountain biking and fishing opportunities.

STEAMBOAT SPRINGS AREA

Fish Creek Falls - This spectacular 283-foot waterfall is located just 15 minutes from downtown Steamboat Springs. Interpretive signs, a wheelchair accessible overlook trail, and a dirt trail leading to the base of the falls. A historical bridge, which crosses Fish Creek, continues the trail 5 miles to Long Lake.

Rabbit Ears Trail - Road 291 is an old Jeep trail that winds through breathtaking meadows with stunning views of the surrounding mountains. The trail can be accessed from Forest Road 311. Make a day of it by stopping at Dumont Lake Picnic area, located just south of the trailhead.

TROUBLESOME/GOULD AREA

Teller City Interpretive Site - Teller City is an abandoned silver mining town, southeast of Walden, that was established in 1879. A 3/4-mile hardened surface loop trail allows visitors to view several building foundations and scattered artifacts. Interpretive signs along the trail explain the colorful history of the area.

Wyoming Highlights

LARAMIE PEAK AREA

Black Mountain - Black Mountain is located off Forest Road 633 in Harris Park. The Black Mountain Lookout Tower on top of the peak is accessible by a rugged 3.5-mile long 4WD road. The tower was built by the Forest Service in 1958 and is one of the few fire lookouts still in operation in the United States. Visitors are welcome!

LaBonte Canyon - This scenic canyon hosts granite rock formations, groves of aspen, and stands of conifer that make it a destination for hikers and photographers. Accessed by Forest Road 658, the canyon has several trails open to motorized and non-motorized use. Camping opportunities are available in Curtis Gulch Campground or dispersed along the Forest Road.

POLE MOUNTAIN AREA

Vedauwoo Recreation Area - The jumbled rocks of Vedauwoo are a popular hiking, biking, camping, and climbing destination between Laramie and Cheyenne. With trails, a picnic area, gazebo, and campground, this stunning area is suitable for many events and activities.

Pilot Hill Connector Trail - Completed in 2022, this trail connects to Pilot Hill Recreation Area Trail 12 at the Forest boundary, providing public access across land management lines. This moderate, non-motorized trail is just over three miles long and winds through aspen groves, limber pine forest, as well as spruce and lodgepole pine stands



SIERRA MADRE AREA

Battle Pass Scenic Byway - Experience Wyoming history as you take in the stunning landscape of the Continental Divide on Wyoming Highway 70. Historic sites along the highway include the mining town of Battle, the Edison Monument commemorating the scientist's fishing trip to the area, and 11,004-foot Bridger Peak. This 28-mile scenic drive is open June to October, weather permitting.

Hog Park - This old tie-hack camp lies 20 miles south of Encampment on Forest Road 550. From the late 1890s to the early 1900s, this camp produces railroad ties for the Union Pacific Railroad. Evidence of past activities still exists in and around this area. The Reservoir is a popular area for camping, fishing, and boating. This is a popular back-way to Hahns Peak and Steamboat Springs in the summer and fall.

SNOWY RANGE AREA

Snowy Range Scenic Byway - The Snowy Range Scenic Byway, Wyoming State Highway 130, spans 27 miles within the Forest Boundary. Accessible from east or west via Interstate 80, the route rises from 8,000 feet on the valley floor to 10,847 feet at Snowy Range Pass. As 12,013 feet nearby Medicine Bow Peak towers over the scenic byway. There are many recreation areas, campgrounds, and trails in the area, as well as two visitors centers. Portions of the byway are maintained all year, but the highest elevations are open June to October, weather permitting.

Medicine Bow Rail Trail - The Medicine Bow Rail Trail is a 21 mile stretch of trail that runs from Pelton Creek Trailhead to Dry Park Trailhead. Bikers pass several trailheads and Lake Owen Campground along the way, and dispersed camping opportunities are numerous. The hard-packed, wide trail is suitable for mountain and gravel bikes.



THUNDER BASIN NATIONAL GRASSLAND

Fiddleback Area - This large area of the Grassland is located between Douglas and Gillette. The area includes the Cheyenne River Valley and is surrounded by the Red Hills and Rochelle Hills to the west and north. It is a haven for eagles, raptors, deer, elk, and antelope.

Inyan Kara Area - Commonly known as the Upton and Osage area, it is located in the far northeast part of Wyoming between Gillette and Newcastle. This area forms the foothills of the Black Hills to the east. It offers a variety of terrain, including low sage and grass plains and thick pine-covered hills. Year-round fishing is the recreational highlight of the area. Several reservoirs are notable for smallmouth bass and trout populations. Abundant trails include both single and double-track segments that provide opportunities for hikers and motorized vehicles.



Contact Us

BRUSH CREEK/HAYDEN RANGER DISTRICT

2171 Highway 130
PO Box 249
Saratoga, WY 82331
Phone: (307) 326-5258

DOUGLAS RANGER DISTRICT

2250 East Richards Street
Douglas, WY 82633
Phone: (307) 358-4690

HAHNS PEAK/BEARS EARS RANGER DISTRICT

925 Weiss Drive
Steamboat Springs, CO 80487
Phone: (970) 870-2299

LARAMIE RANGER DISTRICT

2468 Jackson Street
Laramie, WY 82070-6535
Phone: (307) 745-2300

PARKS RANGER DISTRICT

100 Main Street
PO Box 158
Walden, CO 80480
Phone: (970) 723-2700

YAMPA RANGER DISTRICT

300 Roselawn Ave
PO Box 7
Yampa, CO 80483
Phone: (970) 638-4516

FOREST SUPERVISOR'S OFFICE

2468 Jackson Street
Laramie, WY 82070-6535
Phone: (307) 745-2300



@FS_MBRTB



@FSMBRTB



fs.usda.gov/mbr