

Motor Vehicle Use Map  
 Medicine Bow National Forest  
 Laramie and Brush Creek-Hayden Ranger Districts  
 America's Great Outdoors  
 Wyoming Forest Service  
 U.S. Department of Agriculture

### PURPOSE AND CONTENTS OF THIS MAP

The designations shown on this motor vehicle use map (MVUM) were made by the responsible official pursuant to 36 CFR 212.51, are effective as of the date on the front cover of this MVUM, and will remain in effect until superseded by next year's MVUM.

It is the responsibility of the user to acquire the current MVUM. This MVUM shows the National Forest System roads, National Forest System trails, and the areas on National Forest System lands in the Medicine Bow National Forest that are designated for motor vehicle use pursuant to 36 CFR 212.51. This MVUM also identifies the vehicle classes allowed on each route and in each area, and any seasonal restrictions that apply on those routes and in those areas.

Designation of a road, trail, or area for motor vehicle use by a particular class of vehicle under 36 CFR 212.51 should not be interpreted as encouraging or inviting use or implying that the road, trail, or area is passable, actively maintained, or safe for travel. Motor vehicle designations include parking along designated routes and at facilities associated with designated routes when it is safe to do so and when not causing damage to National Forest System resources. Seasonal weather conditions and natural events may render designated roads and trails impassable for extended periods. Designated areas may contain dangerous or impassable terrain. Many designated roads and trails may be passable only by high-clearance vehicles or four-wheel-drive vehicles. Maintenance of designated roads and trails will depend on available resources, and many may receive little maintenance.

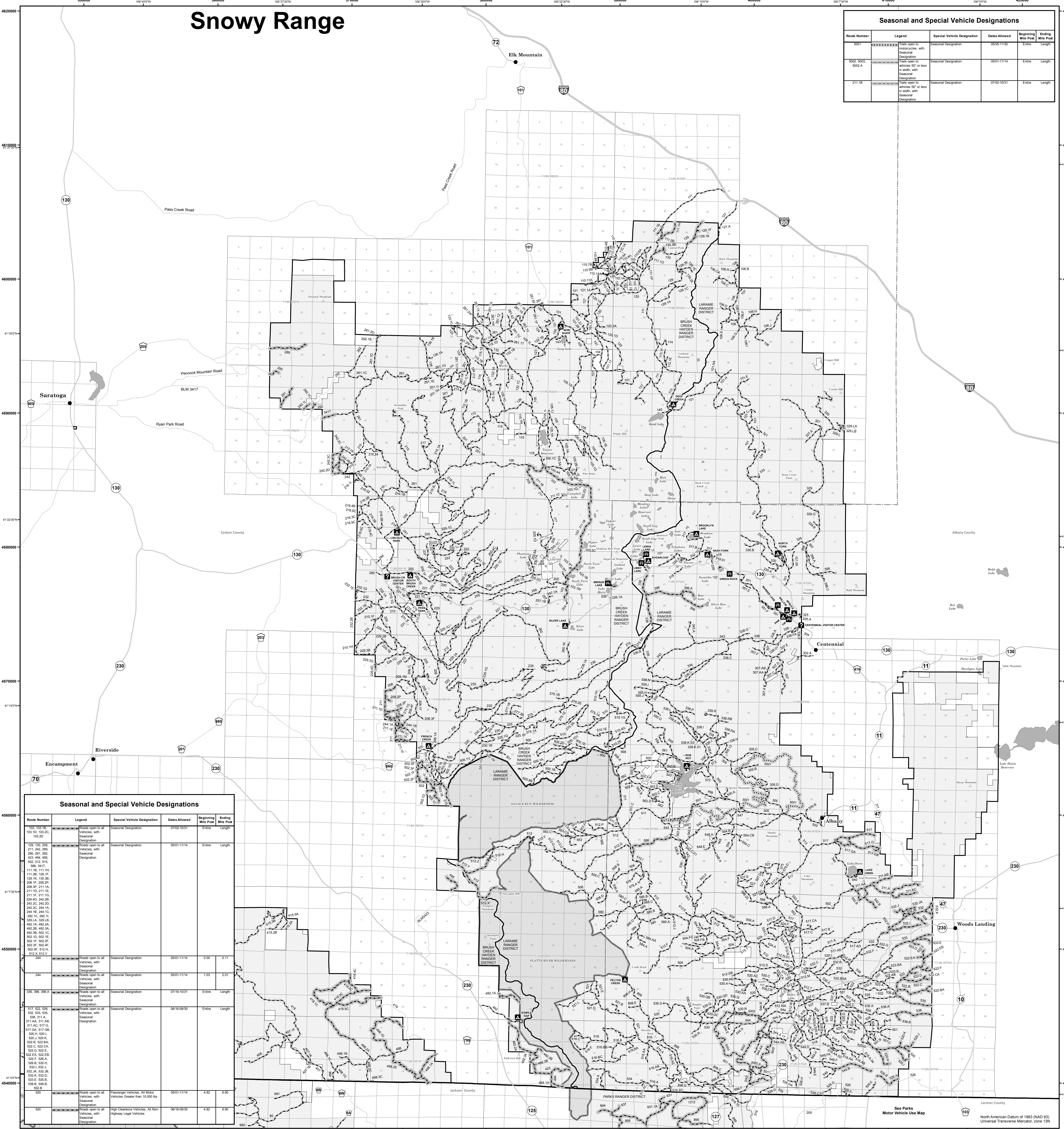
This motor vehicle use map identifies those roads, trails, and areas designated for the motor vehicle use under 36 CFR 212.51 for the purpose of enforcing the prohibition at 36 CFR 261.13. This is a limited purpose. The other public roads are shown for information and navigation purposes only and are not subject to designation under the Forest Service travel management regulation.

These designations apply only to National Forest System roads, National Forest System trails, and areas on National Forest System lands.

### Legend

- Roads Open to Highway Legal Vehicles
- Roads Open to All Vehicles
- Trails Open to All Vehicles
- Trails Open to Vehicles 50" or Less in Width
- Trails Open to Motorcycles Only
- Seasonal Designation (See Table)
- Dispersed Camping/Game Retrieval (See Table)
- Interstate
- Highways, U.S. State
- Other Public Roads
- Short Route Identifier
- FS Campground
- Picnic Area
- Motorized Trailhead
- Information Site
- Peaks
- Forest or Unit Boundary
- National Forest System Lands
- Non-National Forest System Lands within the National Forest
- Wilderness Areas
- County Boundary
- Township and Range Lines
- Section Lines
- Waterbody

Scale: 1:100,000  
 1 inch = 1.58 miles



### VICINITY MAP

### INFORMATION SOURCES

Medicine Bow - Routt National Forests  
 Thunder Basin National Grassland Headquarters  
 2468 Jackson Street  
 Laramie, Wyoming 82070  
 Phone: (307) 745-2300

Brush Creek - Hayden Ranger District  
 South Hwy. 130/230, PO Box 249  
 Saratoga, Wyoming 82331  
 Phone: (307) 326-5258

Laramie Ranger District  
 2468 Jackson Street  
 Laramie, Wyoming 82070  
 Phone: (307) 745-2300

MedBow-Routt National Forests  
 website: [www.fs.fed.us/rl2/mbr/](http://www.fs.fed.us/rl2/mbr/)

In case of emergency, Dial 911

### OPERATOR RESPONSIBILITIES

Operating a motor vehicle on National Forest System roads, National Forest System trails, and in areas on National Forest System lands carries a greater responsibility than operating that vehicle in a city or other developed setting. Not only must you know and follow all applicable traffic laws, you need to show concern for the environment as well as other forest users. The misuse of motor vehicles can lead to the temporary or permanent closure of any designated road, trail, or area. As a motor vehicle operator, you are also subject to State traffic law, including State requirements for licensing, registration, and operation of the vehicle in question.

Motor vehicle use, especially off-highway vehicle use, involves inherent risks that may cause property damage, serious injury, and possibly death to participants. Drive cautiously and anticipate rough surfaces and features, such as snow, mud, vegetation, and water crossings common to remote driving conditions. By your participation, you voluntarily assume full responsibility for these damages, risks, and dangers. Take care at all times to protect yourself and those under your responsibility.

Much of the Medicine Bow National Forest is remote. Medical assistance may not be readily available. Cellular telephones do not work in many areas of the Medicine Bow National Forest. Take adequate food, water, first-aid supplies, and other equipment appropriate for the conditions and expected weather.

**ALWAYS REMEMBER TO RESPECT PRIVATE LAND! PROTECT YOUR PRIVILEGE. STAY ON DESIGNATED ROADS AND TRAILS AND IN DESIGNATED AREAS.**

Read and understand this map in its entirety. If you have questions, please contact the Medicine Bow National Forest for clarification.

As a motor vehicle operator on a National Forest System road, trail, or area you must comply with this map, as well as all Federal, State, and local laws and regulations. Compliance with these rules is your responsibility.

### PROHIBITIONS

It is prohibited to possess or operate a motor vehicle on National Forest System lands on the Medicine Bow National Forest other than in accordance with these designations (36 CFR 261.13).

Violators of 36 CFR 261.13 are subject to a fine of up to \$5,000, imprisonment for up to 6 months, or both (18 U.S.C. 3571(e)). This prohibition applies regardless of the presence or absence of signs.

This map does not display nonmotorized uses, over-snow vehicle uses, or other facilities and attractions on the Medicine Bow National Forest. Obtain forest visitor information from the local national forest office.

Designated roads, trails and areas may also be subject to temporary emergency closures. As a visitor, you must comply with signs notifying you of such restrictions. A national forest may issue an order to close a road, trail or area on a temporary basis to protect the health, or safety of forest visitors or the natural or cultural resources in these areas. Such temporary and/or emergency closures are consistent with the Travel Management Rule (36 CFR 212.52 (b)), 36 CFR 261.261 (B).

The designation "road or trail open to all motor vehicles" does not supersede State traffic law.

### EXPLANATION OF LEGEND ITEMS

**Roads Open to Highway Legal Vehicles Only:**  
 These roads are open only to motor vehicles licensed under State law for general operation on all public roads within the state.

**Roads Open to All Vehicles:**  
 These roads are open to all motor vehicles, including smaller off-highway vehicles that may not be licensed for highway use (but not to oversize or overweight vehicles under State traffic law).

**Trails Open to All Vehicles:**  
 These trails are open to all motor vehicles, including both highway legal and nonhighway legal vehicles.

**Trails Open to Vehicles 50 Inches or Less in Width:**  
 Trails open only to motor vehicles less than 50 inches in width at the widest point on the vehicle.

**Trails Open to Motorcycles Only:**  
 These trails are open only to motorcycles. Sidecars are not permitted.

**Seasonal Designation:**  
 This symbol, used in conjunction with one of the other road or trail symbols, indicates that the road or trail is open only during certain portions of the year. Refer to Seasonal and Special Designation Table for further instructions.

**Dispersed Camping/Game Retrieval:**  
 Dispersed Camping/Game Retrieval, Left Side  
 Dispersed Camping/Game Retrieval, Right Side  
 This symbol is used along with a designated road or trail to indicate limited cross-country motor vehicle use within a specific distance of that route, solely for the purpose of dispersed camping and/or game retrieval. The dots indicate where this activity is permitted. They may be on the left, right, or both sides of the route. Refer to the Dispersed Camping/Game Retrieval Table for specifics.

**Other Public Roads and Trails:**  
 Interstates  
 Highways, U.S., State, County  
 Other Public Roads  
 Other Public Trails  
 These symbols are used to show routes the Forest Service does not have jurisdiction over and has not designated for motorized use. These symbols are part of the reference layers showing connections to towns and cities outside the forest boundary.

**Short Route Identifier:**  
 [7033]  
 This symbol is used for roads that are too short to show a symbol type on the map. The symbol contains the number of the road or trail. Users should refer to the corresponding number in the Short Route Table for designation information.

**Motorized Trail Access:**  
 This symbol indicates a trailhead for access to a motorized route. Not all motorized routes have trailheads and those that do may range from primitive to developed.

### Dispersed Camping / Game Retrieval

Motor vehicle use of designated roads for the purpose of dispersed camping and/or game retrieval is permitted for up to 300 feet from the centerline of the road, allowing the same vehicles as the road allows and the same season as the road is open.

When a bag game animal has been taken, the individual who legally took the animal may drive or be driven to the downed animal. Under no circumstances may a second vehicle be used to retrieve the animal. The vehicle driven to the animal should be of sufficient capacity that only one trip is necessary. The number of individuals who participate in the retrieval is limited only by the vehicle's capacity, and the willingness of others to walk to and from the downed animal.

The vehicle used to retrieve the game may be operated off the route to the distance specified on the MVUM. If the downed game is further than the allowed distance, the vehicle may be driven only the specified distance from the designated route.

Motorized access for dispersed camping and/or game retrieval is allowed only on National Forest System roads.

It applies to the following roads:  
 100, 100.1C, 101, 101.05, 101.11, 101.21, 101.2K, 101.3, 105.1, 105.1A, 105.1B, 105.1C, 105.1D, 105.1E, 105.1F, 105.1G, 105.1H, 105.1I, 105.1J, 105.1K, 105.1L, 105.1M, 105.1N, 105.1O, 105.1P, 105.1Q, 105.1R, 105.1S, 105.1T, 105.1U, 105.1V, 105.1W, 105.1X, 105.1Y, 105.1Z, 105.1AA, 105.1AB, 105.1AC, 105.1AD, 105.1AE, 105.1AF, 105.1AG, 105.1AH, 105.1AI, 105.1AJ, 105.1AK, 105.1AL, 105.1AM, 105.1AN, 105.1AO, 105.1AP, 105.1AQ, 105.1AR, 105.1AS, 105.1AT, 105.1AU, 105.1AV, 105.1AW, 105.1AX, 105.1AY, 105.1AZ, 105.1BA, 105.1BB, 105.1BC, 105.1BD, 105.1BE, 105.1BF, 105.1BG, 105.1BH, 105.1BI, 105.1BJ, 105.1BK, 105.1BL, 105.1BM, 105.1BN, 105.1BO, 105.1BP, 105.1BQ, 105.1BR, 105.1BS, 105.1BT, 105.1BU, 105.1BV, 105.1BW, 105.1BX, 105.1BY, 105.1BZ, 105.1CA, 105.1CB, 105.1CC, 105.1CD, 105.1CE, 105.1CF, 105.1CG, 105.1CH, 105.1CI, 105.1CJ, 105.1CK, 105.1CL, 105.1CM, 105.1CN, 105.1CO, 105.1CP, 105.1CQ, 105.1CR, 105.1CS, 105.1CT, 105.1CU, 105.1CV, 105.1CW, 105.1CX, 105.1CY, 105.1CZ, 105.1DA, 105.1DB, 105.1DC, 105.1DD, 105.1DE, 105.1DF, 105.1DG, 105.1DH, 105.1DI, 105.1DJ, 105.1DK, 105.1DL, 105.1DM, 105.1DN, 105.1DO, 105.1DP, 105.1DQ, 105.1DR, 105.1DS, 105.1DT, 105.1DU, 105.1DV, 105.1DW, 105.1DX, 105.1DY, 105.1DZ, 105.1EA, 105.1EB, 105.1EC, 105.1ED, 105.1EE, 105.1EF, 105.1EG, 105.1EH, 105.1EI, 105.1EJ, 105.1EK, 105.1EL, 105.1EM, 105.1EN, 105.1EO, 105.1EP, 105.1EQ, 105.1ER, 105.1ES, 105.1ET, 105.1EU, 105.1EV, 105.1EW, 105.1EX, 105.1EY, 105.1EZ, 105.1FA, 105.1FB, 105.1FC, 105.1FD, 105.1FE, 105.1FF, 105.1FG, 105.1FH, 105.1FI, 105.1FJ, 105.1FK, 105.1FL, 105.1FM, 105.1FN, 105.1FO, 105.1FP, 105.1FQ, 105.1FR, 105.1FS, 105.1FT, 105.1FU, 105.1FV, 105.1FW, 105.1FX, 105.1FY, 105.1FZ, 105.1GA, 105.1GB, 105.1GC, 105.1GD, 105.1GE, 105.1GF, 105.1GG, 105.1GH, 105.1GI, 105.1GJ, 105.1GK, 105.1GL, 105.1GM, 105.1GN, 105.1GO, 105.1GP, 105.1GQ, 105.1GR, 105.1GS, 105.1GT, 105.1GU, 105.1GV, 105.1GW, 105.1GX, 105.1GY, 105.1GZ, 105.1HA, 105.1HB, 105.1HC, 105.1HD, 105.1HE, 105.1HF, 105.1HG, 105.1HH, 105.1HI, 105.1HJ, 105.1HK, 105.1HL, 105.1HM, 105.1HN, 105.1HO, 105.1HP, 105.1HQ, 105.1HR, 105.1HS, 105.1HT, 105.1HU, 105.1HV, 105.1HW, 105.1HX, 105.1HY, 105.1HZ, 105.1IA, 105.1IB, 105.1IC, 105.1ID, 105.1IE, 105.1IF, 105.1IG, 105.1IH, 105.1II, 105.1IJ, 105.1IK, 105.1IL, 105.1IM, 105.1IN, 105.1IO, 105.1IP, 105.1IQ, 105.1IR, 105.1IS, 105.1IT, 105.1IU, 105.1IV, 105.1IW, 105.1IX, 105.1IY, 105.1IZ, 105.1JA, 105.1JB, 105.1JC, 105.1JD, 105.1JE, 105.1JF, 105.1JG, 105.1JH, 105.1JI, 105.1JJ, 105.1JK, 105.1JL, 105.1JM, 105.1JN, 105.1JO, 105.1JP, 105.1JQ, 105.1JR, 105.1JS, 105.1JT, 105.1JU, 105.1JV, 105.1JW, 105.1JX, 105.1JY, 105.1JZ, 105.1KA, 105.1KB, 105.1KC, 105.1KD, 105.1KE, 105.1KF, 105.1KG, 105.1KH, 105.1KI, 105.1KJ, 105.1KK, 105.1KL, 105.1KM, 105.1KN, 105.1KO, 105.1KP, 105.1KQ, 105.1KR, 105.1KS, 105.1KT, 105.1KU, 105.1KV, 105.1KW, 105.1KX, 105.1KY, 105.1KZ, 105.1LA, 105.1LB, 105.1LC, 105.1LD, 105.1LE, 105.1LF, 105.1LG, 105.1LH, 105.1LI, 105.1LJ, 105.1LK, 105.1LL, 105.1LM, 105.1LN, 105.1LO, 105.1LP, 105.1LQ, 105.1LR, 105.1LS, 105.1LT, 105.1LU, 105.1LV, 105.1LW, 105.1LX, 105.1LY, 105.1LZ, 105.1MA, 105.1MB, 105.1MC, 105.1MD, 105.1ME, 105.1MF, 105.1MG, 105.1MH, 105.1MI, 105.1MJ, 105.1MK, 105.1ML, 105.1MN, 105.1MO, 105.1MP, 105.1MQ, 105.1MR, 105.1MS, 105.1MT, 105.1MU, 105.1MV, 105.1MW, 105.1MX, 105.1MY, 105.1MZ, 105.1NA, 105.1NB, 105.1NC, 105.1ND, 105.1NE, 105.1NF, 105.1NG, 105.1NH, 105.1NI, 105.1NJ, 105.1NK, 105.1NL, 105.1NM, 105.1NO, 105.1NP, 105.1NQ, 105.1NR, 105.1NS, 105.1NT, 105.1NU, 105.1NV, 105.1NW, 105.1NX, 105.1NY, 105.1NZ, 105.1OA, 105.1OB, 105.1OC, 105.1OD, 105.1OE, 105.1OF, 105.1OG, 105.1OH, 105.1OI, 105.1OJ, 105.1OK, 105.1OL, 105.1OM, 105.1ON, 105.1OO, 105.1OP, 105.1OQ, 105.1OR, 105.1OS, 105.1OT, 105.1OU, 105.1OV, 105.1OW, 105.1OX, 105.1OY, 105.1OZ, 105.1PA, 105.1PB, 105.1PC, 105.1PD, 105.1PE, 105.1PF, 105.1PG, 105.1PH, 105.1PI, 105.1PJ, 105.1PK, 105.1PL, 105.1PM, 105.1PN, 105.1PO, 105.1PP, 105.1PQ, 105.1PR, 105.1PS, 105.1PT, 105.1PU, 105.1PV, 105.1PW, 105.1PX, 105.1PY, 105.1PZ, 105.1QA, 105.1QB, 105.1QC, 105.1QD, 105.1QE, 105.1QF, 105.1QG, 105.1QH, 105.1QI, 105.1QJ, 105.1QK, 105.1QL, 105.1QM, 105.1QN, 105.1QO, 105.1QP, 105.1QQ, 105.1QR, 105.1QS, 105.1QT, 105.1QU, 105.1QV, 105.1QW, 105.1QX, 105.1QY, 105.1QZ, 105.1RA, 105.1RB, 105.1RC, 105.1RD, 105.1RE, 105.1RF, 105.1RG, 105.1RH, 105.1RI, 105.1RJ, 105.1RK, 105.1RL, 105.1RM, 105.1RN, 105.1RO, 105.1RP, 105.1RQ, 105.1RR, 105.1RS, 105.1RT, 105.1RU, 105.1RV, 105.1RW, 105.1RX, 105.1RY, 105.1RZ, 105.1SA, 105.1SB, 105.1SC, 105.1SD, 105.1SE, 105.1SF, 105.1SG, 105.1SH, 105.1SI, 105.1SJ, 105.1SK, 105.1SL, 105.1SM, 105.1SN, 105.1SO, 105.1SP, 105.1SQ, 105.1SR, 105.1SS, 105.1ST, 105.1SU, 105.1SV, 105.1SW, 105.1SX, 105.1SY, 105.1SZ, 105.1TA, 105.1TB, 105.1TC, 105.1TD, 105.1TE, 105.1TF, 105.1TG, 105.1TH, 105.1TI, 105.1TJ, 105.1TK, 105.1TL, 105.1TM, 105.1TN, 105.1TO, 105.1TP, 105.1TQ, 105.1TR, 105.1TS, 105.1TT, 105.1TU, 105.1TV, 105.1TW, 105.1TX, 105.1TY, 105.1TZ, 105.1UA, 105.1UB, 105.1UC, 105.1UD, 105.1UE, 105.1UF, 105.1UG, 105.1UH, 105.1UI, 105.1UJ, 105.1UK, 105.1UL, 105.1UM, 105.1UN, 105.1UO, 105.1UP, 105.1UQ, 105.1UR, 105.1US, 105.1UT, 105.1UU, 105.1UV, 105.1UW, 105.1UX, 105.1UY, 105.1UZ, 105.1VA, 105.1VB, 105.1VC, 105.1VD, 105.1VE, 105.1VF, 105.1VG, 105.1VH, 105.1VI, 105.1VJ, 105.1VK, 105.1VL, 105.1VM, 105.1VN, 105.1VO, 105.1VP, 105.1VQ, 105.1VR, 105.1VS, 105.1VT, 105.1VU, 105.1VV, 105.1VW, 105.1VX, 105.1VY, 105.1VZ, 105.1WA, 105.1WB, 105.1WC, 105.1WD, 105.1WE, 105.1WF, 105.1WG, 105.1WH, 105.1WI, 105.1WJ, 105.1WK, 105.1WL, 105.1WM, 105.1WN, 105.1WO, 105.1WP, 105.1WQ, 105.1WR, 105.1WS, 105.1WT, 105.1WU, 105.1WV, 105.1WW, 105.1WX, 105.1WY, 105.1WZ, 105.1XA, 105.1XB, 105.1XC, 105.1XD, 105.1XE, 105.1XF, 105.1XG, 105.1XH, 105.1XI, 105.1XJ, 105.1XK, 105.1XL, 105.1XM, 105.1XN, 105.1XO, 105.1XP, 105.1XQ, 105.1XR, 105.1XS, 105.1XT, 105.1XU, 105.1XV, 105.1XW, 105.1XX, 105.1XY, 105.1XZ, 105.1YA, 105.1YB, 105.1YC, 105.1YD, 105.1YE, 105.1YF, 105.1YG, 105.1YH, 105.1YI, 105.1YJ, 105.1YK, 105.1YL, 105.1YM, 105.1YN, 105.1YO, 105.1YP, 105.1YQ, 105.1YR, 105.1YS, 105.1YT, 105.1YU, 105.1YV, 105.1YW, 105.1YX, 105.1YY, 105.1YZ, 105.1ZA, 105.1ZB, 105.1ZC, 105.1ZD, 105.1ZE, 105.1ZF, 105.1ZG, 105.1ZH, 105.1ZI, 105.1ZJ, 105.1ZK, 105.1ZL, 105.1ZM, 105.1ZN, 105.1ZO, 105.1ZP, 105.1ZQ, 105.1ZR, 105.1ZS, 105.1ZT, 105.1ZU, 105.1ZV, 105.1ZW, 105.1ZX, 105.1ZY, 105.1ZZ

### Seasonal and Special Vehicle Designations

Route Number	Legend	Special Vehicle Designation	Dates Allowed	Beginning Mile Post	Ending Mile Post
100, 100.1C, 101, 101.05, 101.11, 101.21, 101.2K, 101.3, 105.1, 105.1A, 105.1B, 105.1C, 105.1D, 105.1E, 105.1F, 105.1G, 105.1H, 105.1I, 105.1J, 105.1K, 105.1L, 105.1M, 105.1N, 105.1O, 105.1P, 105.1Q, 105.1R, 105.1S, 105.1T, 105.1U, 105.1V, 105.1W, 105.1X, 105.1Y, 105.1Z, 105.1AA, 105.1AB, 105.1AC, 105.1AD, 105.1AE, 105.1AF, 105.1AG, 105.1AH, 105.1AI, 105.1AJ, 105.1AK, 105.1AL, 105.1AM, 105.1AN, 105.1AO, 105.1AP, 105.1AQ, 105.1AR, 105.1AS, 105.1AT, 105.1AU, 105.1AV, 105.1AW, 105.1AX, 105.1AY, 105.1AZ, 105.1BA, 105.1BB, 105.1BC, 105.1BD, 105.1BE, 105.1BF, 105.1BG, 105.1BH, 105.1BI, 105.1BJ, 105.1BK, 105.1BL, 105.1BM, 105.1BN, 105.1BO, 105.1BP, 105.1BQ, 105.1BR, 105.1BS, 105.1BT, 105.1BU, 105.1BV, 105.1BW, 105.1BX, 105.1BY, 105.1BZ, 105.1CA, 105.1CB, 105.1CC, 105.1CD, 105.1CE, 105.1CF, 105.1CG, 105.1CH, 105.1CI, 105.1CJ, 105.1CK, 105.1CL, 105.1CM, 105.1CN, 105.1CO, 105.1CP, 105.1CQ, 105.1CR, 105.1CS, 105.1CT, 105.1CU, 105.1CV, 105.1CW, 105.1CX, 105.1CY, 105.1CZ, 105.1DA, 105.1DB, 105.1DC, 105.1DD, 105.1DE, 105.1DF, 105.1DG, 105.1DH, 105.1DI, 105.1DJ, 105.1DK, 105.1DL, 105.1DM, 105.1DN, 105.1DO, 105.1DP, 105.1DQ, 105.1DR, 105.1DS, 105.1DT, 105.1DU, 105.1DV, 105.1DW, 105.1DX, 105.1DY, 105.1DZ, 105.1EA, 105.1EB, 105.1EC, 105.1ED, 105.1EE, 105.1EF, 105.1EG, 105.1EH, 105.1EI, 105.1EJ, 105.1EK, 105.1EL, 105.1EM, 105.1EN, 105.1EO, 105.1EP, 105.1ER, 105.1ES, 105.1ET, 105.1EU, 105.1EV, 105.1EW, 105.1EX, 105.1EY, 105.1EZ, 105.1FA, 105.1FB, 105.1FC, 105.1FD, 105.1FE, 105.1FF, 105.1FG, 105.1FH, 105.1FI, 105.1FJ, 105.1FK, 105.1FL, 105.1FM, 105.1FN, 105.1FO, 105.1FP, 105.1FQ, 105.1FR, 105.1FS, 105.1FT, 105.1FU, 105.1FV, 105.1FW, 105.1FX, 105.1FY, 105.1FZ, 105.1GA, 105.1GB, 105.1GC, 105.1GD, 105.1GE, 105.1GF, 105.1GG, 105.1GH, 105.1GI, 105.1GJ, 105.1GK, 105.1GL, 105.1GM, 105.1GN, 105.1GO, 105.1GP, 105.1GQ, 105.1GR, 105.1GS, 105.1GT, 105.1GU, 105.1GV, 105.1GW, 105.1GX, 105.1GY, 105.1GZ, 105.1HA, 105.1HB, 105.1HC, 105.1HD, 105.1HE, 105.1HF, 105.1HG, 105.1HI, 105.1HJ, 105.1HK, 105.1HL, 105.1HM, 105.1HN, 105.1HO, 105.1HP, 105.1HQ, 105.1HR, 105.1HS, 105.1HT, 105.1HU, 105.1HV, 105.1HW, 105.1HX, 105.1HY, 105.1HZ, 105.1IA, 105.1IB, 105.1IC, 105.1ID, 105.1IE, 105.1IF, 105.1IG, 105.1IH, 105.1IJ, 105.1IK, 105.1IL, 105.1IM, 105.1IN, 105.1IO, 105.1IP, 105.1IQ, 105.1IR, 105.1IS, 105.1IT, 105.1IU, 105.1IV, 105.1IW, 105.1IX, 105.1IY, 105.1IZ, 105.1JA, 105.1JB, 105.1JC, 105.1JD, 105.1JE, 105.1JF, 105.1JG, 105.1JH, 105.1JI, 105.1JJ, 105.1JK, 105.1JL, 105.1JM, 105.1JN, 105.1JO, 105.1JP, 105.1JQ, 105.1JR, 105.1JS, 105.1JT, 105.1JU, 105.1JV, 105.1JW, 105.1JX, 105.1JY, 105.1JZ, 105.1KA, 105.1KB, 105.1KC, 105.1KD, 105.1KE, 105.1KF, 105.1KG, 105.1KH, 105.1KI, 105.1KJ, 105.1KL, 105.1KM, 105.1KN, 105.1KO, 105.1KP, 105.1KQ, 105.1KR, 105.1KS, 105.1KT, 105.1KU, 105.1KV, 105.1KW, 105.1KX, 105.1KY, 105.1KZ, 105.1LA, 105.1LB, 105.1LC, 105.1LD, 105.1LE, 105.1LF, 105.1LG, 105.1LH, 105.1LI, 105.1LJ, 105.1LK, 105.1LL, 105.1LM, 105.1LN, 105.1LO, 105.1LP, 105.1LQ, 105.1LR, 105.1LS, 105.1LT, 105.1LU, 105.1LV, 105.1LW, 105.1LX, 105.1LY, 105.1LZ, 105.1MA, 105.1MB, 105.1MC, 105.1MD, 105.1ME, 105.1MF, 105.1MG, 105.1MH, 105.1MI, 105.1MJ, 105.1MK, 105.1ML, 105.1MN, 105.1MO, 105.1MP, 105.1MQ, 105.1MR, 105.1MS, 105.1MT, 105.1MU, 105.1MV, 105.1MW, 105.1MX, 105.1MY, 105.1MZ, 105.1NA, 105.1NB, 105.1NC, 105.1ND, 105.1NE, 105.1NF, 105.1NG, 105.1NH, 105.1NI, 105.1NJ, 105.1NK, 105.1NL, 105.1NM, 105.1NO, 105.1NP, 105.1NQ, 105.1NR, 105.1NS, 105.1NT, 105.1NU, 105.1NV, 105.1NW, 105.1NX, 105.1NY, 105.1NZ, 105.1OA, 105.1OB, 105.1OC, 105.1OD, 105.1OE, 105.1OF, 105.1OG, 105.1OH, 105.1OI, 105.1OJ, 105.1OK, 1					