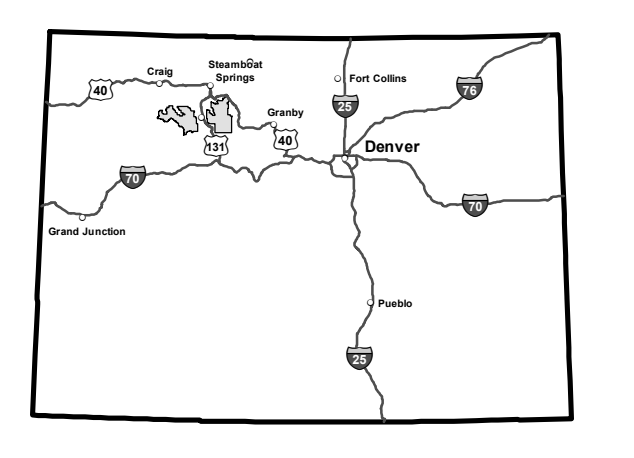


VICINITY MAP



INFORMATION SOURCES

Medicine Bow - Routt National Forests
Thunder Basin National Grassland
Headquarters
2468 Jackson Street
Laramie, WY 82070
Phone: (307) 745-2300

Yampa Ranger District
300 Roselawn
Yampa, CO 80483
Phone: (970) 638-4516

Website: www.fs.fed.us/r2/mbr
In case of emergency, Dial 911



treadlightly!

Travel and recreate with minimum impact.
Respect the environment and the rights of others.
Educate yourself plan and prepare before you go.
Allow for future use of the outdoors by leaving it better than you found it.
Discover the rewards of responsible recreation.
For more information on Tread Lightly!, go to www.treadlightly.org or call 1-800-966-9900.

USDA is an equal opportunity provider, employer, and lender.

PURPOSE AND CONTENTS OF THIS MAP

The designations shown on this motor vehicle use map (MVUM) were made by the responsible official pursuant to 36 CFR 212.51; are effective as of the date on the front cover of this MVUM, and will remain in effect until superseded by next year's MVUM.

Designation of a road, trail, or area for motor vehicle use by a particular class of vehicle under 36 CFR 212.51 should not be interpreted as encouraging or inviting use or implying that the road, trail or area is passable, actively maintained, or safe for travel. Motor vehicle designations include parking along designated routes and at facilities associated with designated routes when it is safe to do so and when not causing damage to National Forest System resources. Seasonal weather conditions and natural events may render designated roads and trails impassable for extended periods. Designated areas may contain dangerous or impassable terrain. Many designated roads and trails may be passable only by high-clearance vehicles or four-wheel-drive vehicles. Maintenance of designated roads and trails will depend on available resources, and many may receive little maintenance.

This motor vehicle use map identifies those roads, trails, and areas designated for the motor vehicle use under 36 CFR 212.51 for the purpose of enforcing the prohibition at 36 CFR 261.13. This is a limited purpose. The other public roads are shown for information and navigation purposes only and are not subject to designation under the Forest Service travel management regulation.

These designations apply only to National Forest System roads, National Forest System trails, and areas on National Forest System lands.

PROHIBITIONS

It is prohibited to possess or operate a motor vehicle on National Forest System lands on the Routt National Forest other than in accordance with these designations (36 CFR 261.13)

Violators of 36 CFR 261.13 are subject to a fine of up to \$5,000, imprisonment for up to 6 months, or both (18 U.S.C. 3371(a)). This prohibition applies regardless of the presence or absence of signs.

This map does not display nonmotorized uses, over-snow vehicle uses, or other facilities and attractions on the Routt National Forest. Obtain forest visitor information from the local national forest office.

Designated roads, trails and areas may also be subject to temporary emergency closures. As a visitor, you must comply with signs notifying you of such restrictions. A national forest may issue an order to close a road, trail or area on a temporary basis to protect the life, health, or safety of forest visitors or the natural or cultural resources in these areas. Such temporary and/or emergency closures are consistent with the Travel Management Rule (36 CFR 212.52 (b), 36 CFR 261 subpart B).

The designation "road or trail open to all motor vehicles" does not supersede State traffic law.

OPERATOR RESPONSIBILITIES

Operating a motor vehicle on National Forest System roads, National Forest System trails, and in areas on National Forest System lands carries a greater responsibility than operating that vehicle in a city or other developed setting. Not only must you know and follow all applicable traffic laws, you need to show concern for the environment as well as other forest users. The misuse of motor vehicles can lead to the temporary or permanent closure of any designated road, trail, or area. As a motor vehicle operator, you are also subject to State traffic law, including State requirements for licensing, registration, and operation of the vehicle in question.

Motor vehicle use, especially off-highway vehicle use, involves inherent risks that may cause property damage, serious injury, and possibly death to participants. Drive cautiously and anticipate rough surfaces and features, such as snow, mud, vegetation, and water crossings common to remote driving conditions. By your participation, you voluntarily assume full responsibility for these damages, risks, and dangers. Take care at all times to protect yourself and those under your responsibility.

Much of the Routt National Forest is remote. Medical assistance may not be readily available. Cellular telephones do not work in many areas of the Routt National Forest. Take adequate food, water, first-aid supplies, and other equipment appropriate for the conditions and expected weather.

ALWAYS REMEMBER TO RESPECT PRIVATE LAND! PROTECT YOUR PRIVILEGE. STAY ON DESIGNATED ROADS AND TRAILS AND IN DESIGNATED AREAS.

Read and understand this map in its entirety. If you have questions, please contact the Routt National Forest for clarification.

As a motor vehicle operator on a National Forest System road, trail, or area you must comply with this map, as well as all Federal, State, and local laws and regulations. Compliance with these rules is your responsibility.

DISPERSED CAMPING

Motor vehicle use off of designated roads for the purpose of dispersed camping is permitted for up to 300 feet from the centerline of the road, allowing the same vehicles as the road allows and the same season as the road is open. This applies to the following roads:

- 20, 20.1H, 20.1J, 22, 60, 60.2A, 100, 100.2A, 100.2B, 100.2E, 101, 101.1A, 103, 131, 185, 186, 198
- 206, 209, 211, 212, 214, 222, 225, 225.1I, 225.1J, 226, 231, 232, 237, 238, 239, 241, 243, 247, 250, 251, 251.1A, 251.1B, 254, 263, 264, 268, 269, 270, 276, 280, 282, 284, 284.4, 285, 287, 289, 290, 291, 292, 294, 295, 296, 298.1A
- 301, 301.1A, 301.1B, 302, 302.1A, 302.1B, 302.1C, 303, 303.2A, 303.2B, 303.2C, 303.2D, 304, 306, 306.1A, 306.1B, 307, 307.1A, 308, 310, 310.1A, 311, 313, 314, 315
- 440, 471, 471.1A, 471.1B, 571, 575, 579, 612, 613, 615, 618, 619, 620, 623, 625, 626, 627, 634, 634.2A, 635
- 906, 910, 910.1B, 910.1C, 911, 911.1A, 915, 915.1A, 915.1B, 915.1D, 915.1E, 930, 930.2B, 930.2C, 930.2D, 930.2E, 940, 940.1E, 940.1F, 942, 943, 945, 950, 950.1A, 951, 959, 967, 969

Legend

- Roads Open to Highway Legal Vehicles
- Roads Open to All Vehicles
- Trails Open to Vehicles 50" or Less in Width
- Trails Open to Motorcycles Only
- Seasonal Designation (See Table)
- Dispersed Camping (See Table)
- Highways, U.S. State
- Other Public Roads
- Milepost Marker
- Mountain Peaks
- FS Campground
- Motorized Trailhead
- Ranger Station
- Forest or Unit Boundary
- National Forest System Lands
- Non-National Forest System Lands within the National Forest
- Wilderness Areas
- Lakes
- Township and Range Lines
- Section Lines

1:126,720
12 inch = 1 mile

EXPLANATION OF LEGEND ITEMS

Roads Open to Highway Legal Vehicles Only: ————

These roads are open only to motor vehicles licensed under State law for general operation on all public roads within the state.

Roads Open to All Vehicles: ————

These roads are open to all motor vehicles, including smaller off-highway vehicles that may not be licensed for highway use (but not to oversize or overweight vehicles under State traffic law).

Trails Open to Vehicles 50 inches or Less in Width: - - - - -

Trails open only to motor vehicles less than 50 inches in width at the widest point on the vehicle.

Trails Open to Motorcycles Only: *****

These trails are open only to motorcycles. Sidecars are not permitted.

Seasonal Designation: ————

This symbol, used in conjunction with one of the other road or trail symbols, indicates that the road or trail is open only during certain portions of the year. Refer to Seasonal and Special Designation Table for further instructions.

Dispersed Camping/Game Retrieval: ————

This symbol is used along with a designated road or trail to indicate limited cross-country motor vehicle use within a specific distance of that route, solely for the purpose of dispersed camping and/or game retrieval. The dots indicate where this activity is permitted. They may be on the left, right, or both sides of the route. Refer to the Dispersed Camping/Game Retrieval Table for specifics.

Other Public Roads and Trails: ————

Highways, U.S. State

Other Public Roads

These symbols are used to show routes the Forest Service does not have jurisdiction over and has not designated for motorized use. These symbols are part of the reference layers showing connections to towns and cities outside the forest boundary.

Milepost Marker: ————

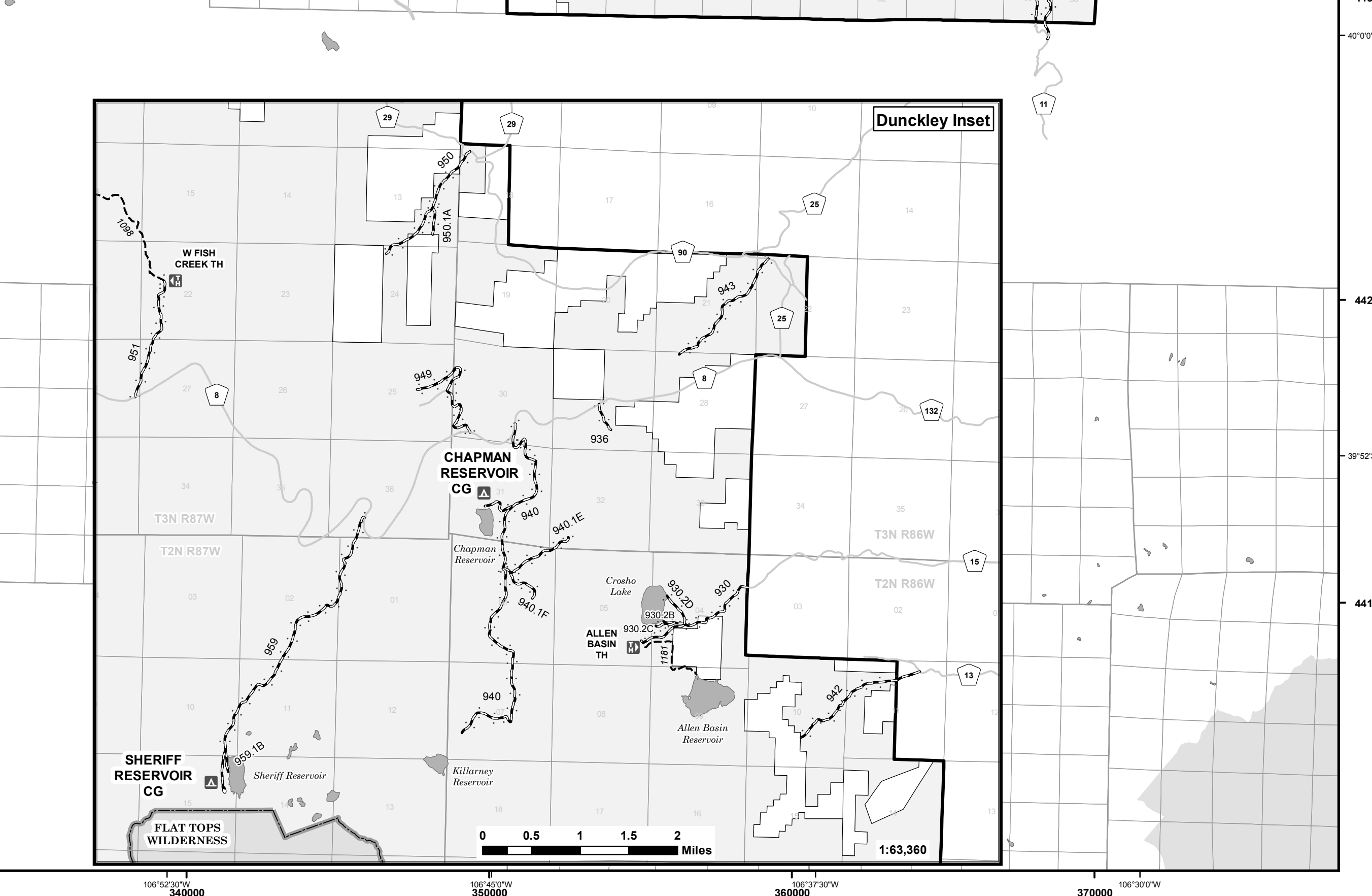
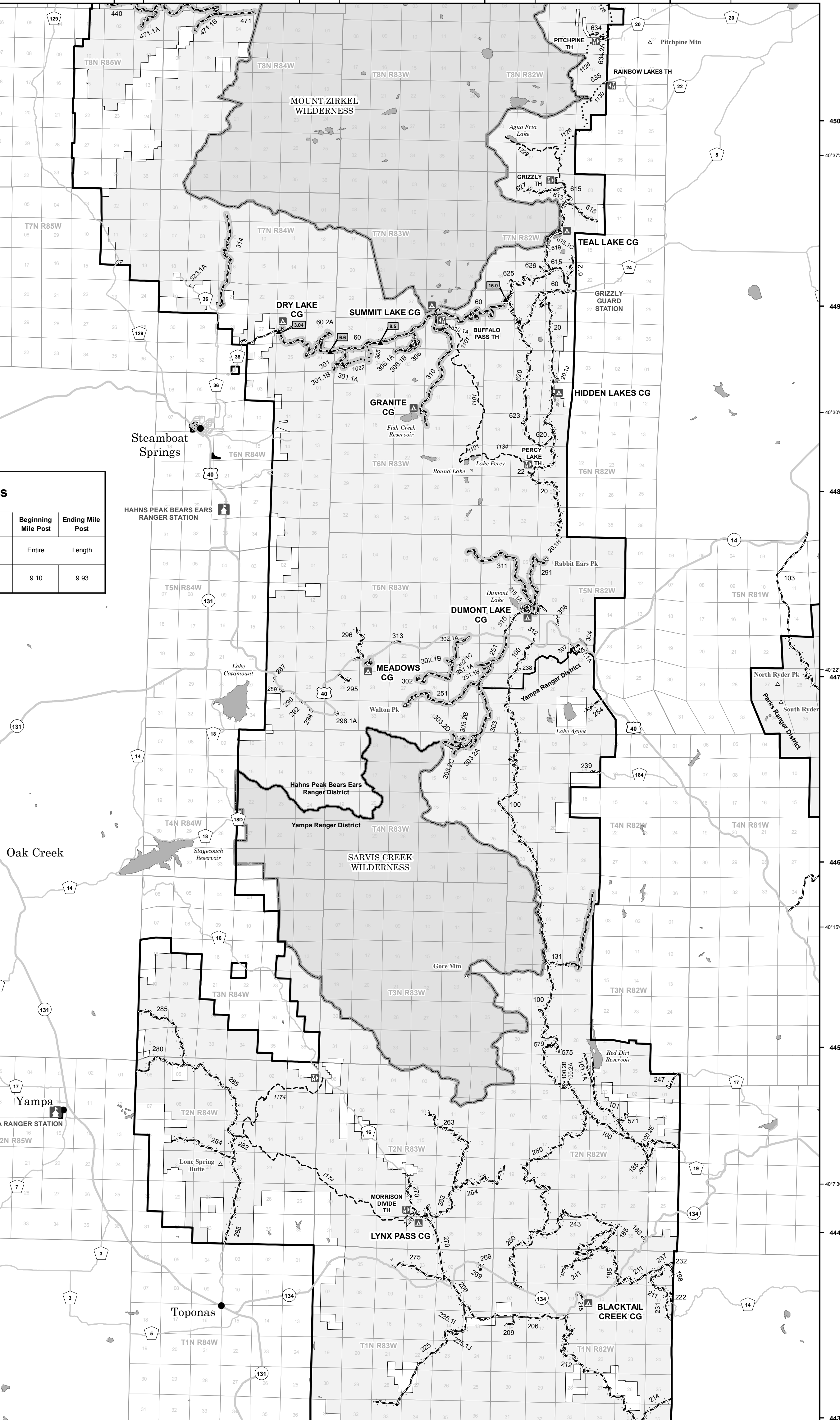
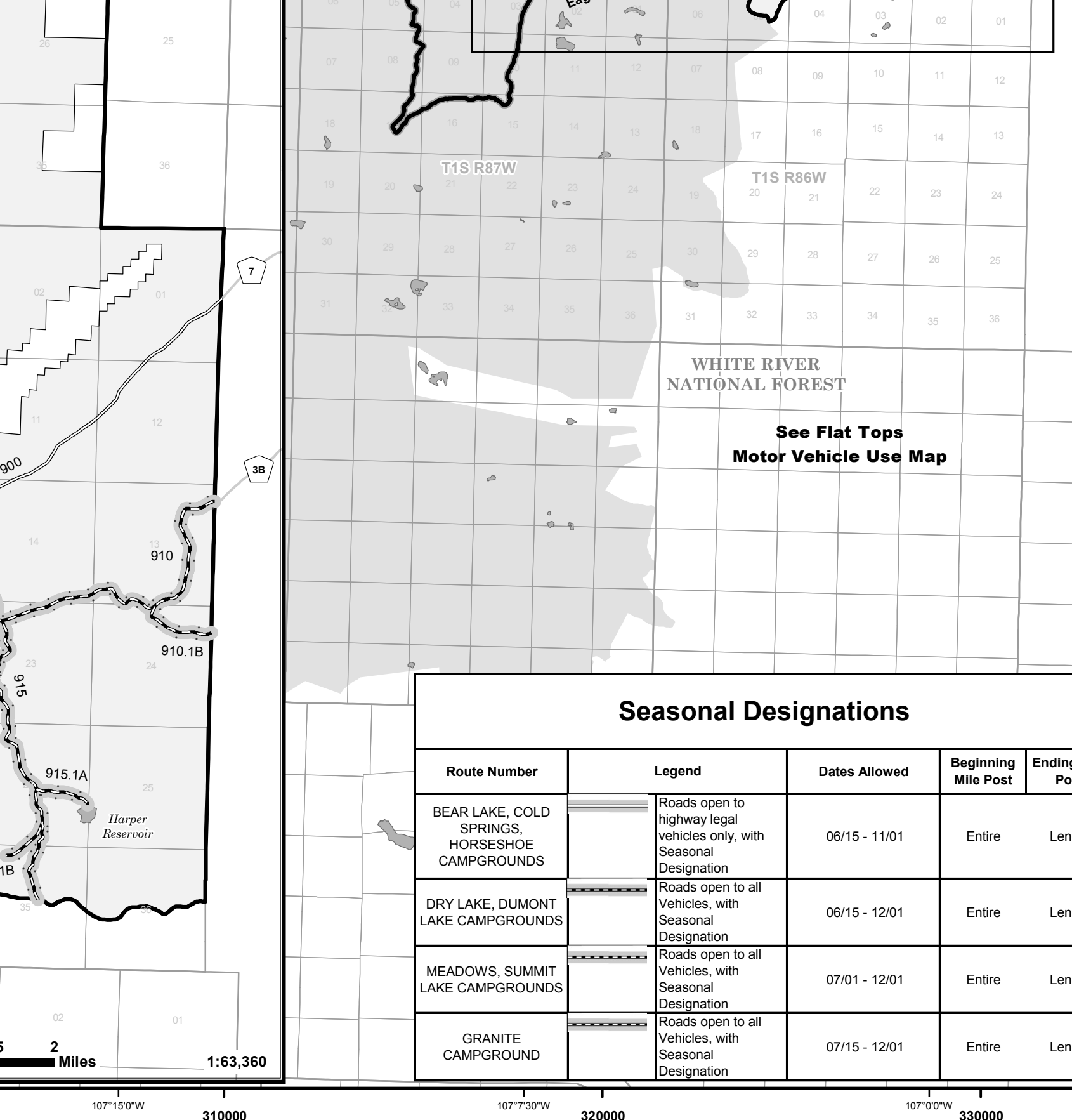
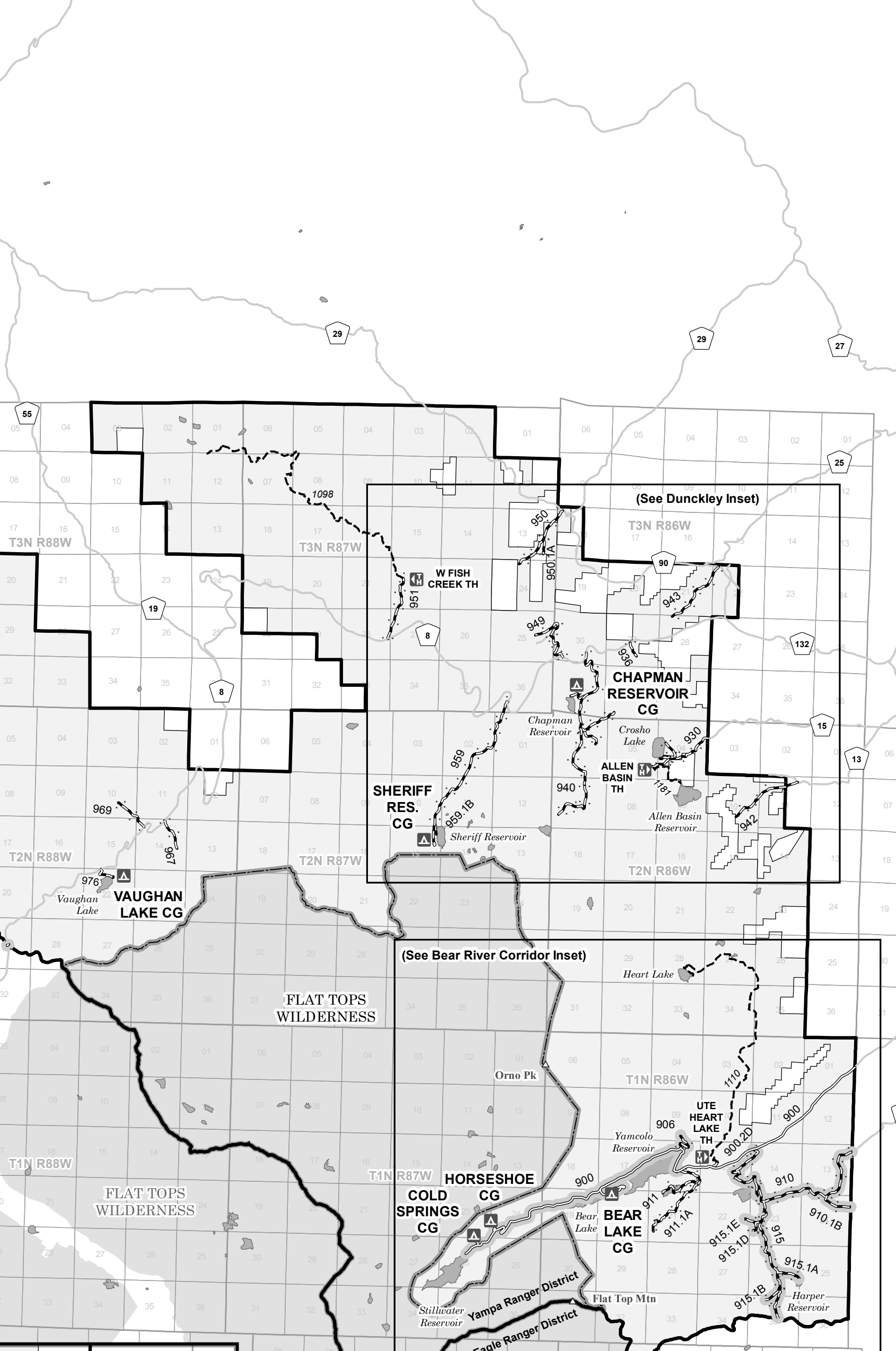
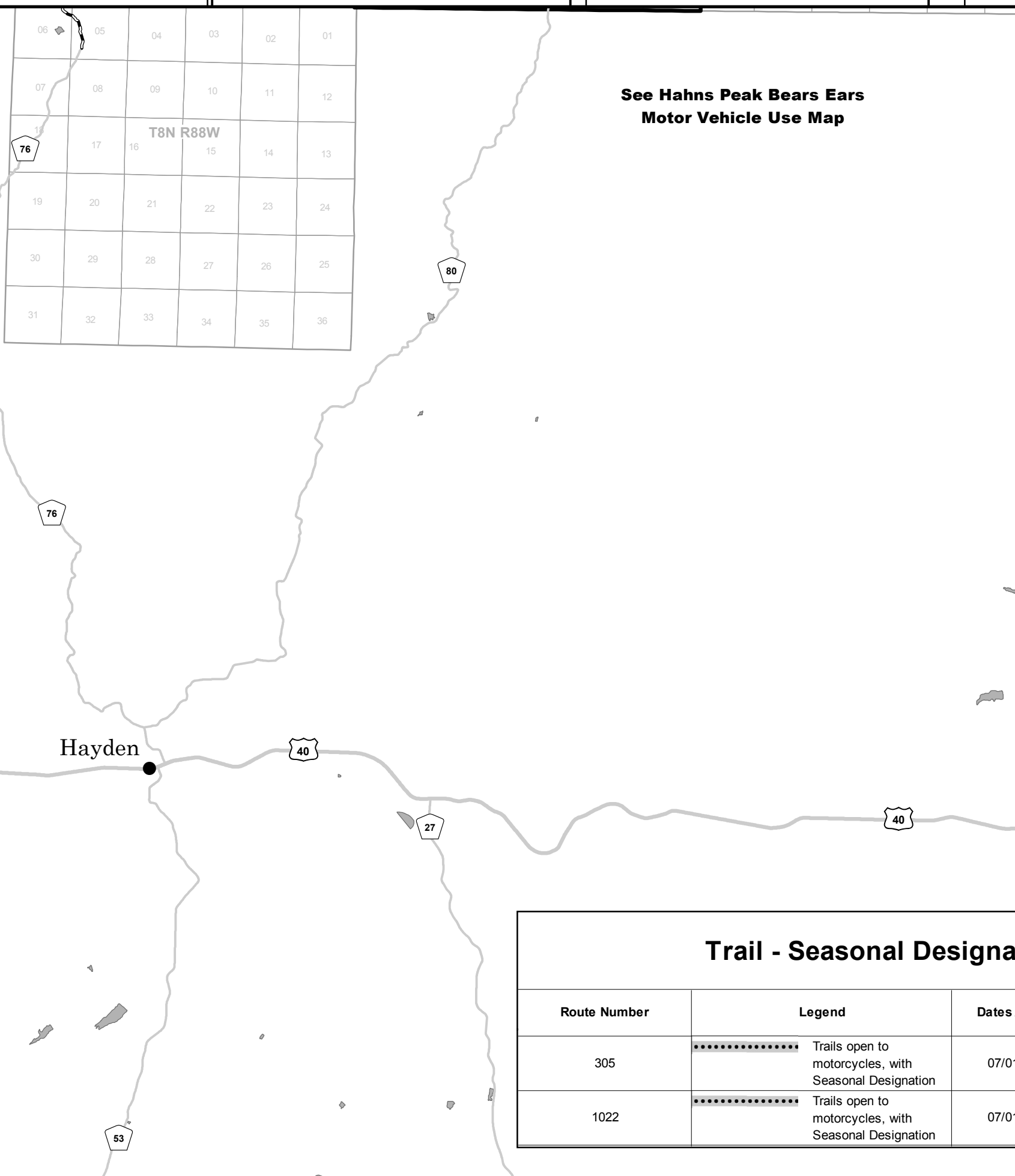
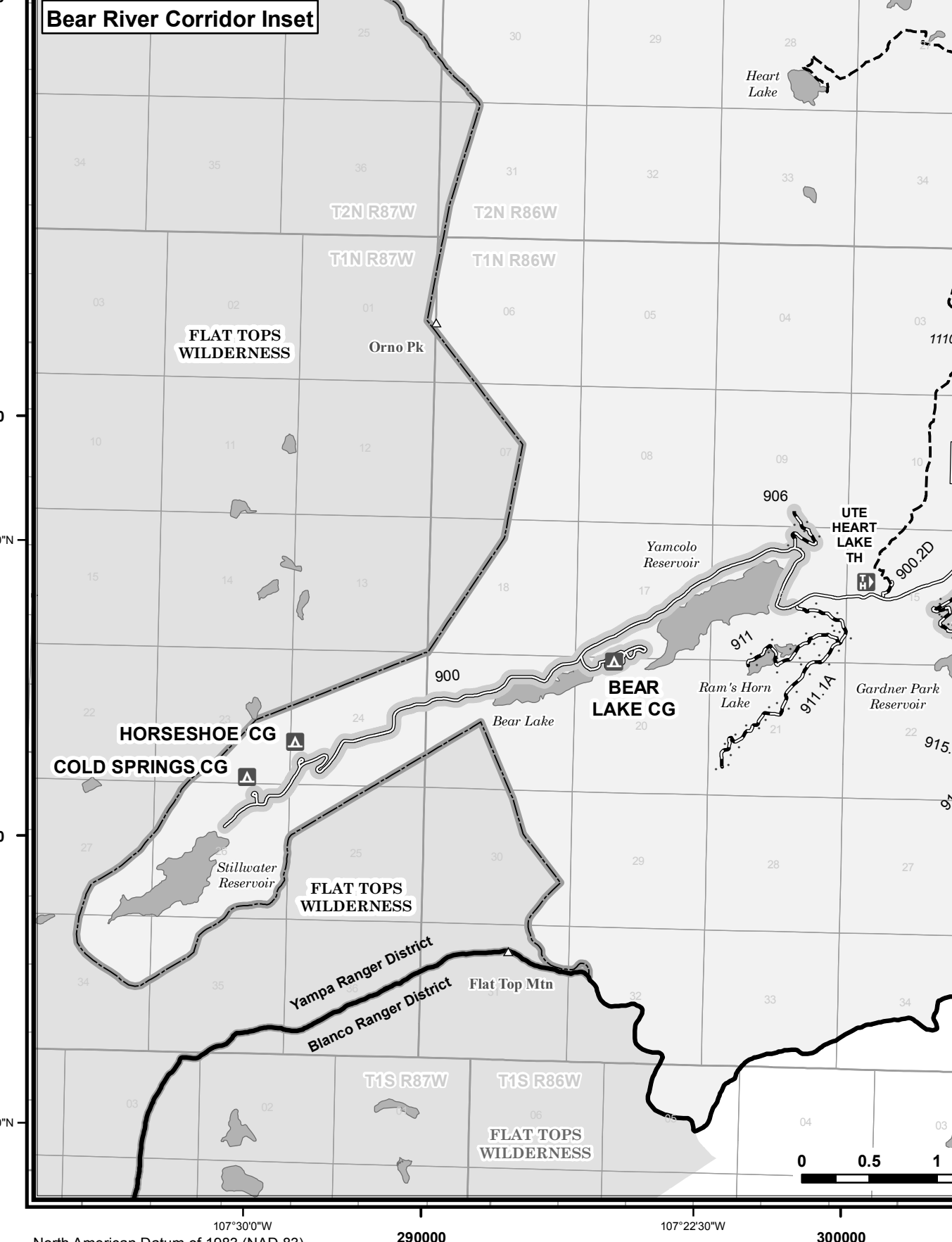
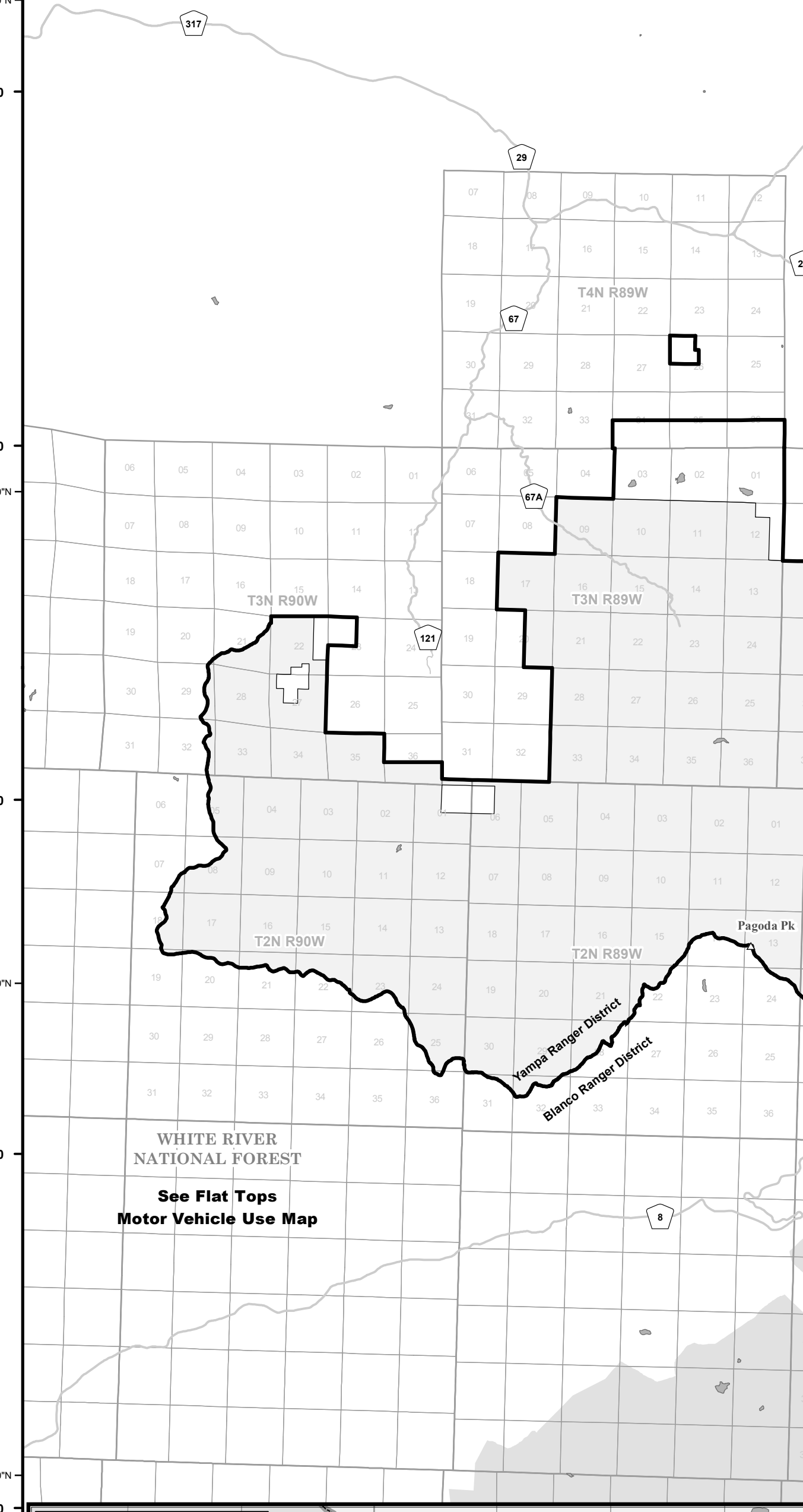
This symbol is used to display the beginning and ending mileposts of a road that has a change in the designation but not the symbology.

Motorized Trail Access: ————

This symbol indicates a trailhead for access to a motorized route. Not all motorized routes have trailheads and those that do may range from primitive to developed.

Seasonal Designations

Route Number	Legend	Dates Allowed	Beginning Mile Post	Ending Mile Post
60	Roads open to all Vehicles, with Seasonal Designation	06/15 - 12/01	3.04	6.60
60	Roads open to all Vehicles, with Seasonal Designation	07/01 - 12/01	6.60	8.50
60	Roads open to all Vehicles, with Seasonal Designation	07/01 - 12/01	8.50	15.00
60.2A	Roads open to all Vehicles, with Seasonal Designation	06/15 - 12/01	Entire	Length
131	Roads open to all Vehicles, with Seasonal Designation	09/13 - 12/15	0.90	3.90
251, 251.1A, 251.1B, 291	Roads open to all Vehicles, with Seasonal Designation	07/01 - 12/01	Entire	Length
301	Roads open to all Vehicles, with Seasonal Designation	07/01 - 12/01	0.00	1.00
301.1A, 301.1B, 302, 302.1A, 302.1B, 302.1C, 303, 303.2A, 303.2B, 303.2C, 303.2D, 306, 306.1A, 306.1B	Roads open to all Vehicles, with Seasonal Designation	07/01 - 12/01	Entire	Length
310	Roads open to all Vehicles, with Seasonal Designation	07/15 - 12/01	0.00	4.52
310.1A	Roads open to all Vehicles, with Seasonal Designation	07/15 - 12/01	Entire	Length
311	Roads open to all Vehicles, with Seasonal Designation	07/01 - 12/01	Entire	Length
314	Roads open to all Vehicles, with Seasonal Designation	06/15 - 12/01	0.25	3.97
315.1A	Roads open to all Vehicles, with Seasonal Designation	06/15 - 12/01	Entire	Length
900	Roads open to highway legal vehicles only, with Seasonal Designation	06/15 - 12/15	11.30	17.26
906	Roads open to all Vehicles, with Seasonal Designation	06/15 - 12/15	0.00	0.61
910	Roads open to all Vehicles, with Seasonal Designation	06/15 - 12/15	0.00	4.73
910.1B, 910.1C, 915, 915.1A, 915.1B, 915.1D, 915.1E	Roads open to all Vehicles, with Seasonal Designation	06/15 - 12/15	Entire	Length



Trail - Seasonal Designations

Route Number	Legend	Dates Allowed	Beginning Mile Post	Ending Mile Post
305	Trails open to motorcycles, with Seasonal Designation	07/01 - 12/01	Entire	Length
1022	Trails open to motorcycles, with Seasonal Designation	07/01 - 12/01	9.10	9.93

Seasonal Designations

Route Number	Legend	Dates Allowed	Beginning Mile Post	Ending Mile Post
BEAR LAKE, COLD SPRINGS, HORSESHOE CAMPGROUNDS	Roads open to highway legal vehicles only, with Seasonal Designation	06/15 - 11/01	Entire	Length
DRY LAKE, DUMONT LAKE CAMPGROUNDS	Roads open to all Vehicles, with Seasonal Designation	06/15 - 12/01	Entire	Length
MEADOWS, SUMMIT LAKE CAMPGROUNDS	Roads open to all Vehicles, with Seasonal Designation	07/01 - 12/01	Entire	Length
GRANITE CAMPGROUND	Roads open to all Vehicles, with Seasonal Designation	07/15 - 12/01	Entire	Length