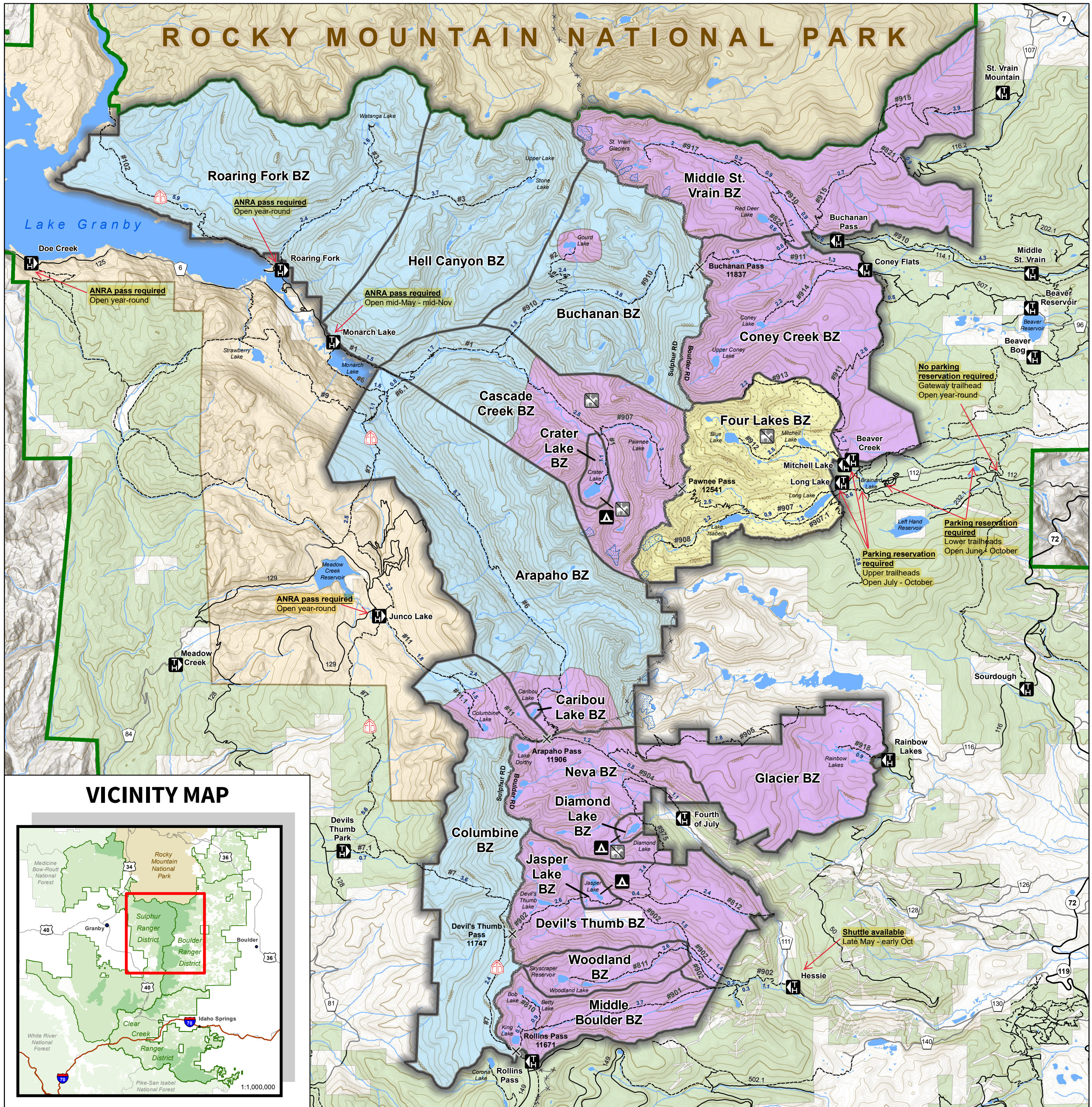




INDIAN PEAKS WILDERNESS AREA



Legend			
Backcountry Zones (BZ)	<ul style="list-style-type: none"> National Forest System Land Arapaho National Recreation Area National Park Service Non-Federal Land Administrative Forest Boundary 	<ul style="list-style-type: none"> Continental Divide State or US Highway County Road National Forest System Road Trails 	<ul style="list-style-type: none"> Trailhead Designated Camp Site No Packstock Continental Divide National Scenic Trail
<ul style="list-style-type: none"> Wilderness Boundary BZ Boundary Campfires Permitted No Campfires No Camping May 1 - Nov 30 	<ul style="list-style-type: none"> 3.7 Trail Junction Length (miles) Continental Divide Pass 	<p>NOTE: Camping permits are valid only for backcountry zones and date specified on permit.</p> <p>1:72,000</p> <p>0 0.5 1 2 Miles</p>	<p>Disclaimer</p> <p>This product is reproduced from geospatial data prepared by the USDA Forest Service. Geospatial data and product accuracy may vary. Using geospatial products for purposes other than those for which they were created may yield inaccurate or misleading results. The USDA Forest Service reserves the right to correct, update, modify, or replace geospatial products without notification. For more information contact the Arapaho-Roosevelt National Forest Supervisor's Office at 970-295-6600.</p>