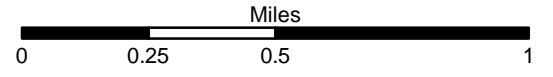
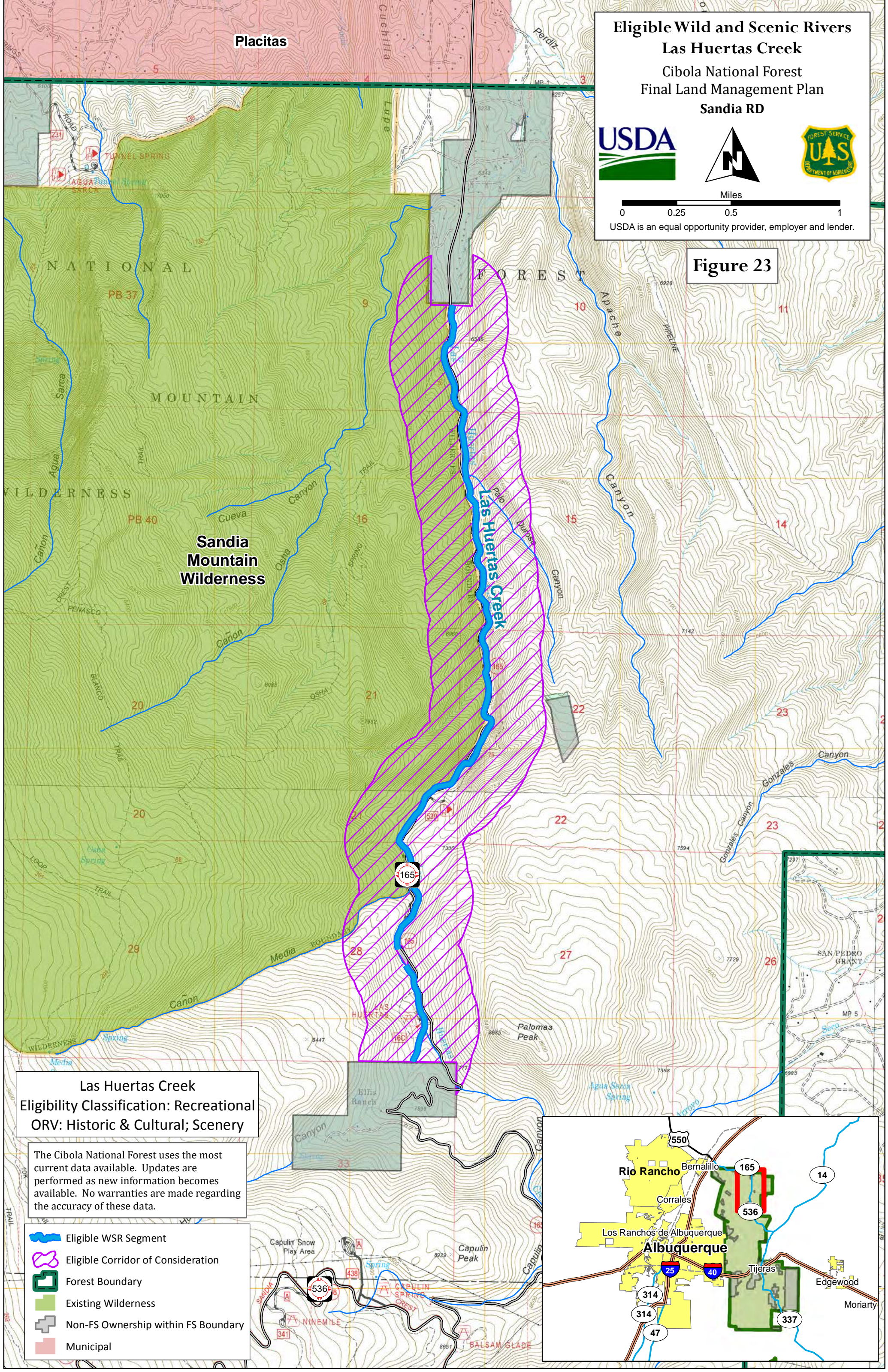


**Eligible Wild and Scenic Rivers**  
**Las Huertas Creek**  
 Cibola National Forest  
 Final Land Management Plan  
 Sandia RD



USDA is an equal opportunity provider, employer and lender.

**Figure 23**



**Sandia Mountain Wilderness**

**Las Huertas Creek**

**Las Huertas Creek**  
 Eligibility Classification: Recreational  
 ORV: Historic & Cultural; Scenery

The Cibola National Forest uses the most current data available. Updates are performed as new information becomes available. No warranties are made regarding the accuracy of these data.

- Eligible WSR Segment
- Eligible Corridor of Consideration
- Forest Boundary
- Existing Wilderness
- Non-FS Ownership within FS Boundary
- Municipal

