

Map 46 Desired Scenic Integrity Objectives

Alternative C

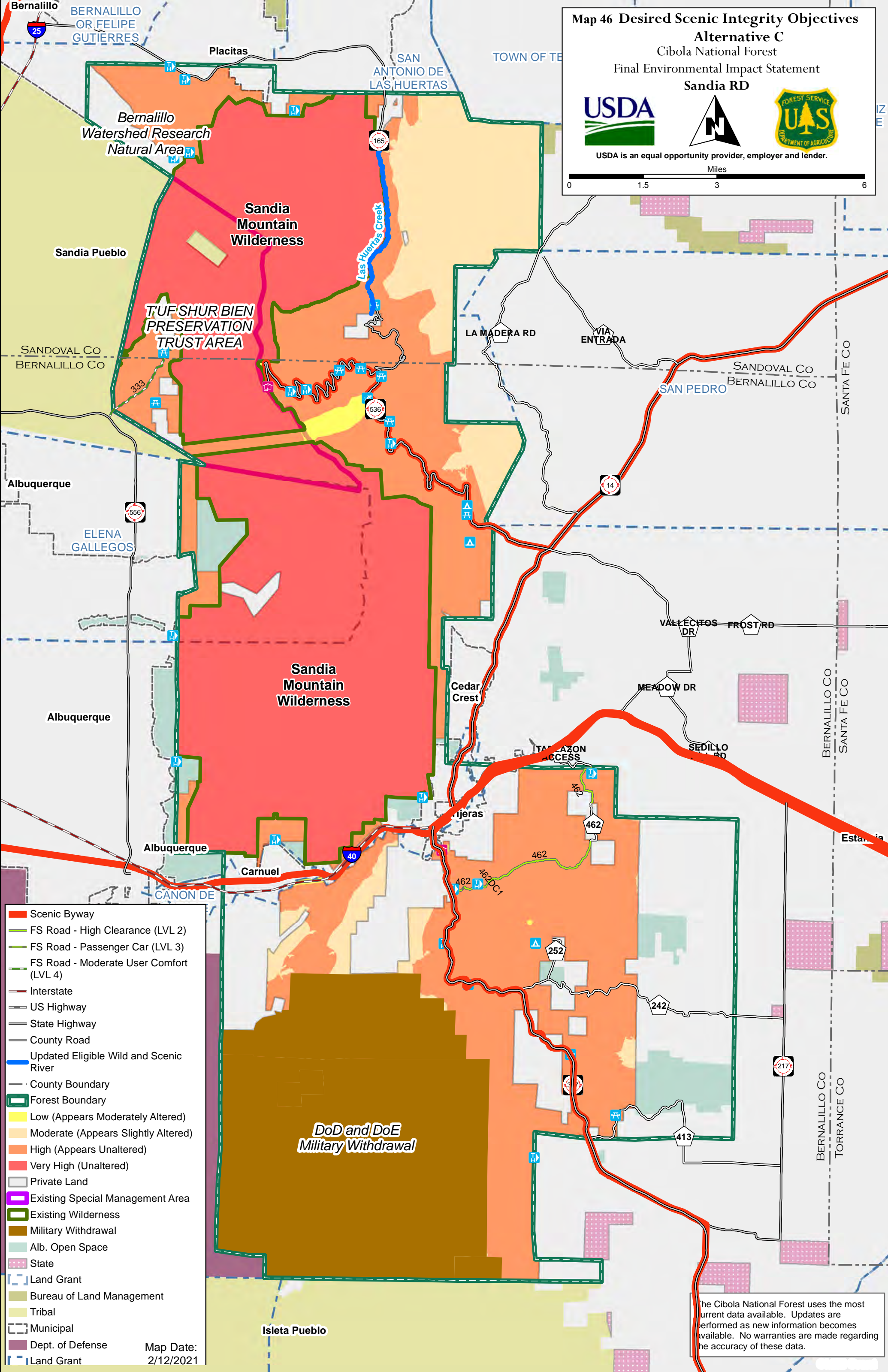
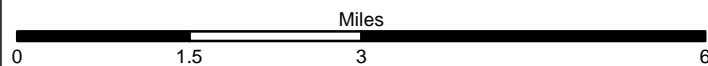
Cibola National Forest

Final Environmental Impact Statement

Sandia RD



USDA is an equal opportunity provider, employer and lender.



- Scenic Byway
- FS Road - High Clearance (LVL 2)
- FS Road - Passenger Car (LVL 3)
- FS Road - Moderate User Comfort (LVL 4)
- Interstate
- US Highway
- State Highway
- County Road
- Updated Eligible Wild and Scenic River
- County Boundary
- Forest Boundary
- Low (Appears Moderately Altered)
- Moderate (Appears Slightly Altered)
- High (Appears Unaltered)
- Very High (Unaltered)
- Private Land
- Existing Special Management Area
- Existing Wilderness
- Military Withdrawal
- Alb. Open Space
- State
- Land Grant
- Bureau of Land Management
- Tribal
- Municipal
- Dept. of Defense
- Land Grant

Map Date:  
2/12/2021

The Cibola National Forest uses the most current data available. Updates are performed as new information becomes available. No warranties are made regarding the accuracy of these data.