



# Special Forest Products - Incidental Use Guide

## Coronado National Forest

### What is Incidental Use?

A permit is typically required to harvest special forest products on the Coronado National Forest. For minor amounts of forest products that are for direct personal use, a permit may not be required. This brochure lists the products and amounts that may be harvested under incidental use without charge and without the need for a permit, when these products are used for personal use. It also describes how products may be harvested and provides information regarding the locations where harvest may occur. Materials gathered under incidental use cannot be sold or exchanged in any form.

Products and quantity limits may change from time to time to protect forest resources. It is the responsibility of the harvester to stay current with updates. You may contact any of our offices or check our website for the most current listings.

<https://www.fs.usda.gov/main/coronado/passes-permits/forestproducts>

### Where Can I Harvest?

No harvest is allowed within operating contract areas, such as forest product sales or precommercial thinning areas. There is NO harvest within 200 feet of any building, campground, state highway, river, stream, lake, or other water body.

Harvest of special forest products is only allowed on Coronado National Forest lands that fall outside of administrative sites, wilderness areas, zoological areas, botanical areas, and research natural areas.

These areas are not typically marked in the field, and it is the harvester's responsibility to ensure that they are in an appropriate area. Maps to help guide harvesters to lands open to special forest products collection are provided at no charge and are available at all of our offices.

### What Can I Harvest?

Product	Daily Limit	Yearly Limit
Acorns	2 gallons	10 gallons
Assorted berries	1 gallon	5 gallons
Assorted mushrooms	1 gallon	5 gallons
Assorted seeds	1 quart	2 gallons
Barrel cactus fruits	2 gallons	10 gallons
Beargrass leaves	1 pound	5 pounds
Conifer cones	10 cones	1 bushel
Creosote twigs	1 gallon	5 gallons
Fern fiddleheads	1 gallon	5 gallons
Firewood - <i>Only for on-Forest camping use, dead &amp; down material only</i>	1/8 cord (4'x2'x2')	2 cords
Manzanita branches	5 branches	15 branches
Mesquite pods	2 gallons	10 gallons
Mistletoe	10 pieces	50 pieces
Pine needles	5 gallons	20 gallons
Prickly pear fruits (tunas)	2 gallons	10 gallons
Prickly pear pads (nopales)	5 gallons	15 gallons

### Acorns

Acorns may be harvested for food or to grow oak trees. Beware that most acorns require processing before eating as they contain tannin, making them bitter tasting. Acorns are generally collected starting in the fall when they drop from the trees.

### Assorted berries

Gathering conservatively from any one plant and from each berry patch will ensure a viable local seed bank and maintain a food source for wildlife. Stems, branches, and leaves must be protected while harvesting to maintain plant health.

### Assorted mushrooms

Mushrooms are the fruiting part of living organisms, of which the vast majority are in leaf litter, the duff layer, and soil. Carefully pluck or cut mushrooms without disturbing the ground to protect the fungal net. Do not rake or dig for mushrooms and do not pull mushrooms up from the ground. This helps sustain a healthy fungi population. Keeping your harvested mushrooms in a basket, or container with openings, helps to spread spores, aiding the chances for successful reproduction and expansion of local populations.

### Assorted seeds

Seeds may be collected for growing the plants themselves. Be sure you know which plant species are protected before harvesting any seeds.

### Barrel cactus fruits

Only the fruits are allowed to be harvested under this category. They generally ripen throughout the winter. Taking only a small portion from an individual barrel cactus helps maintain a food source for wildlife.

### Beargrass leaves (*Nolina microcarpa*)

Only the leaves may be harvested under this category. The branch and root system must be left undisturbed to ensure leaf re-growth and to foster the health of the plant following harvest. Choosing only leaves that you can reasonably use and harvesting a limited number of leaves from any one plant promotes a healthy plant.

### Conifer cones

Many of our conifers have cones that can be used for wreaths, potpourris, and other crafts. Only dry conifer cones that are on the ground may be harvested. Choosing only cones that are completely dry and free of damage helps prevent the spread of insects and disease.

### Creosote twigs

Creosote twigs are often harvested for their scent or traditional medicinal uses. The root system must be left undisturbed to ensure a healthy shrub remains. Use sharp pruning shears and harvest a limited number of twigs from any one plant.

### Fern fiddleheads

Fiddleheads should only be harvested from healthy fern crowns that have at least four fiddleheads emerging from them. Harvest fiddleheads by snapping them off cleanly by hand or with a sharp knife. Research suggests that no more than half of the fiddleheads from each crown should be harvested in order to maintain a healthy plant and sustainable population.

## Firewood

While camping on the Coronado National Forest, you may collect up to 1/8 cord (4 ft x 2 ft x 2 ft, loosely stacked) of firewood for your campfire, up to 2 cords per year. Only dead and down wood may be collected, all wood must be cut into 3 foot sections or smaller, and all firewood must remain on Coronado National Forest lands at all times.

When burning firewood, you can reduce the amount you use and smoke you produce. Use dry wood, start your fires quickly using small kindling, and keep fires hot and small. This will keep the air cleaner, keep you warmer longer, and reduce your impact on the land.

Prior to harvesting, check the current Fire Danger Level and follow current Public Use Restrictions. Functioning spark arresters are a requirement on all power saws. Use of chainsaws requires you to carry fire prevention tools with each saw including an axe, shovel, and fire extinguisher of at least 8 oz. capacity. If Public Use Restrictions are in effect, it may also require a one-hour fire watch after using the saw. We encourage you to collect your wood by hand with the aid of hand saws. Always take the necessary fire safety precautions before, during, and after you build a fire to reduce safety risks. Don't build a fire on, above, or below dead vegetation and keep a 10 foot buffer of mineral soil, clear of all grass, leaves, logs, stumps, or other vegetation. Keep your fire small, never leave your fire unattended, and keep water and a shovel within reach. Before leaving, drown your fire with water, stir the coals and ash, and drown it repeatedly until it is cool to the touch.

## Manzanita branches

Only dead and down manzanita branches may be harvested. No individual branch greater than 6 feet long, or greater than 4 inches in diameter at the widest point, may be harvested. Saw use for harvesting is prohibited.

## Mesquite pods

Mesquite pods can be harvested for food and typically ground into mesquite meal using a hammermill. Use caution, mesquite pods can contain a toxic mold. They are best harvested off the tree, not off the ground. When the pods are ripe, they should come off with the slightest pull.

## Mistletoe

Mistletoe is a parasitic plant that attaches to a host plant and extracts water and nutrients from it. Do not collect mistletoe from any pine species. While harvesting and transporting mistletoe, keep it in a sealed container so that seeds cannot accidentally be spread. Using a saw or cutting off tree limbs while harvesting is prohibited.

## Pine needles

Only dead and down pine needles may be harvested under this category. While harvesting and transporting, store needles in a sealed container to prevent the spread of insects or diseases.

## Prickly pear pads and fruits (nopales and tunas)

Harvest no more than half of the new pads and fruits from any one plant. Use caution, both pads and fruits contain glochids (hair-like spines or short prickles) as well as full size spines.

## Know Before You Go!

Be sure to plan and prepare before your trip to the Coronado National Forest, visit <https://www.fs.usda.gov/visit/know-before-you-go> or contact your local Forest Service office for forest safety information.

## Conditions of Incidental Use

- Harvest or transport of products collected under incidental use cannot take place while any person in your group is harvesting or transporting the same product under a forest products permit.
- Only products listed on this guide may be harvested, and only from areas open for harvest. Harvest area maps are available at any Coronado National Forest office at no charge. It is your responsibility to ensure that you are within open harvest areas on Coronado National Forest lands.
- To protect the land and resources, products may be removed from the list, or limits lowered without notice; it is your responsibility to stay up to date. You may visit our webpage or contact our offices to stay current.
- Individual product harvesting techniques must be followed; refer to each of the product headings for details or contact our offices.
- Follow all road and area closures. Closures are placed to reduce the spread of forest diseases, protect wildlife and land resources, or to provide for public safety. Vehicles are not allowed on closed roads or off roads. Do not block roads or gates. Leave gates as you found them, either open or closed.
- Protect the ground, surrounding vegetation, and soil from damage and disturbance.
- Pack it in, pack it out. Please do not litter!
- Bury human waste a minimum of 12 inches deep and 200 feet away from any water source, road, or building.
- Do not harvest within 200 feet of any water body, campground, active contract area, or building.
- Be able to correctly identify species before harvesting. Harvest of any protected species, or any part of it, is strictly prohibited. There are numerous species that are poisonous. It is the harvester's responsibility to ensure they know the status of species and to not harvest or damage any protected species.

## WHEN IN DOUBT...LEAVE IT IN THE WOODS!

## Coronado National Forest

### Supervisor's Office

300 W. Congress St.  
Tucson, AZ 85701  
520-388-8300

### Douglas Ranger District

1192 West Saddleview Rd.  
Douglas, AZ 85607  
520-388-8436

### Nogales Ranger District

303 Old Tucson Rd.  
Nogales, AZ 85621  
520-281-2296

### Safford Ranger District

711 14th Avenue, Suite D  
Safford, AZ 85546  
928-428-4150

### Santa Catalina Ranger District

5700 N. Sabino Canyon Rd.  
Tucson, AZ 85750  
520-749-8700

### Sierra Vista Ranger District

4070 South Avenida Saracino  
Hereford, AZ 85615  
520-378-0311

*The U.S. Department of Agriculture (USDA) prohibits discrimination in all its programs and activities on the basis of race, color, national origin, age, disability, and where applicable, sex, marital status, familial status, parental status, religion, sexual orientation, genetic information, political beliefs, reprisal, or because all or part of an individual's income is derived from any public assistance program. (Not all prohibited bases apply to all programs.) Persons with disabilities who require alternative means for communication of program information (Braille, large print, audiotape, etc.) should contact USDA's TARGET Center at (202) 720-2600 (voice and TDD). To file a complaint of discrimination, write to USDA, Director, Office of Civil Rights, 1400 Independence Avenue, S.W., Washington, D.C. 20250-9410, or call (800) 795-3272 (voice) or (202) 720-6382 (TDD). USDA is an equal opportunity provider and employer.*



# Coronado National Forest Incidental Forest Products Use

Contact the Ranger District office  
for more information

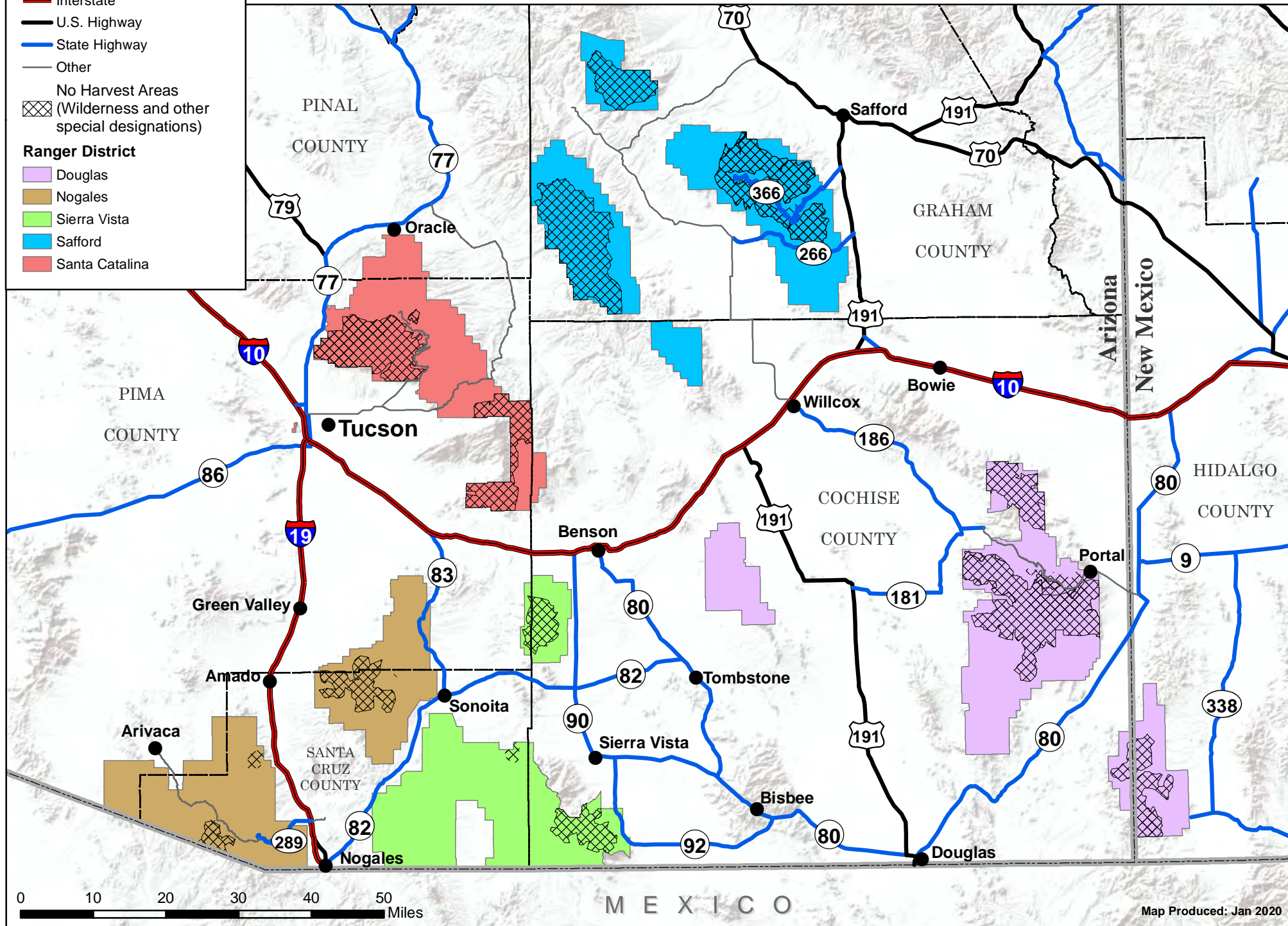


## Roads

- Interstate
- U.S. Highway
- State Highway
- Other
- No Harvest Areas  
(Wilderness and other special designations)

## Ranger District

- Douglas
- Nogales
- Sierra Vista
- Safford
- Santa Catalina

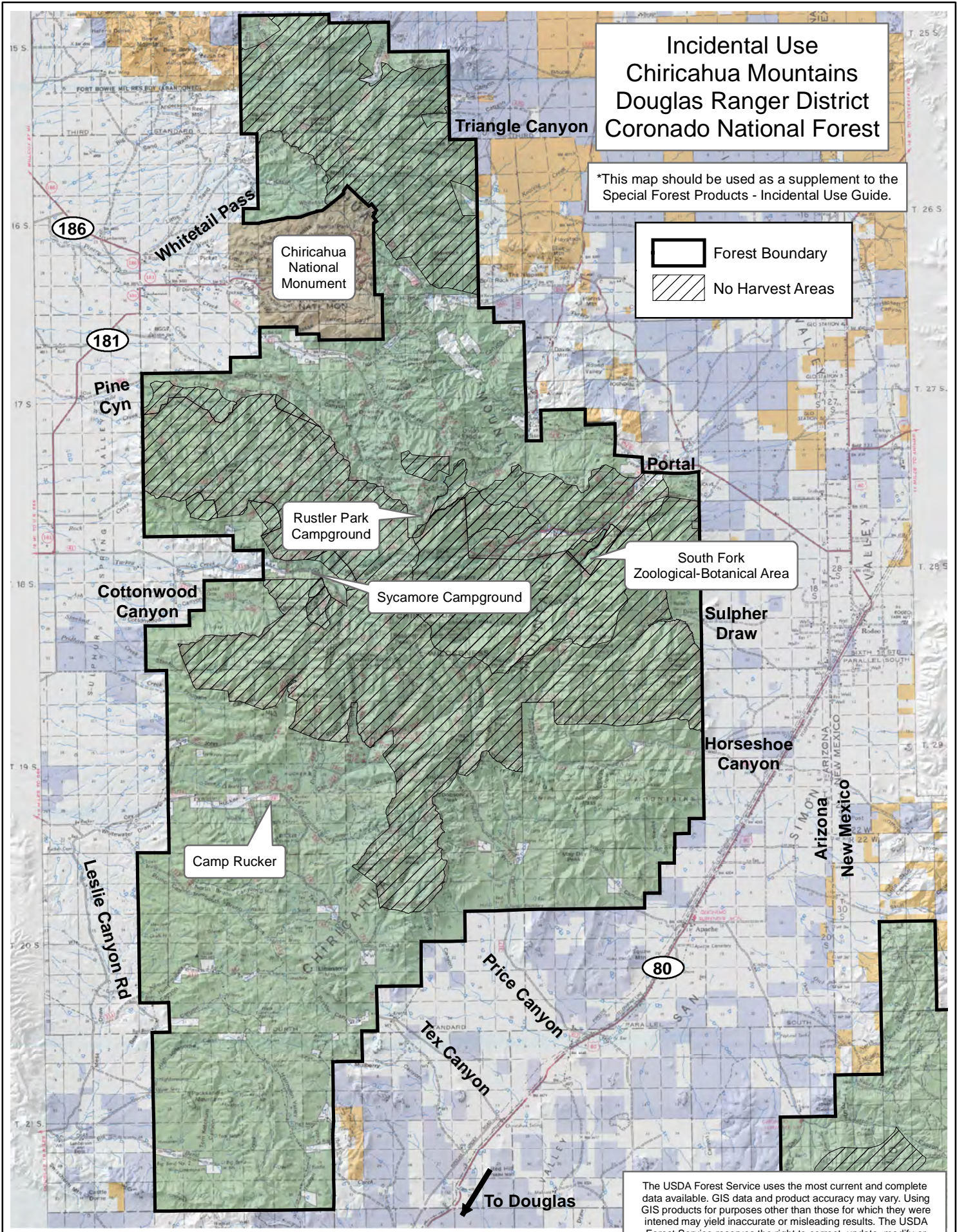


0 10 20 30 40 50 Miles

MEXICO

Map Produced: Jan 2020





Incidental Use  
Chiricahua Mountains  
Douglas Ranger District  
Coronado National Forest

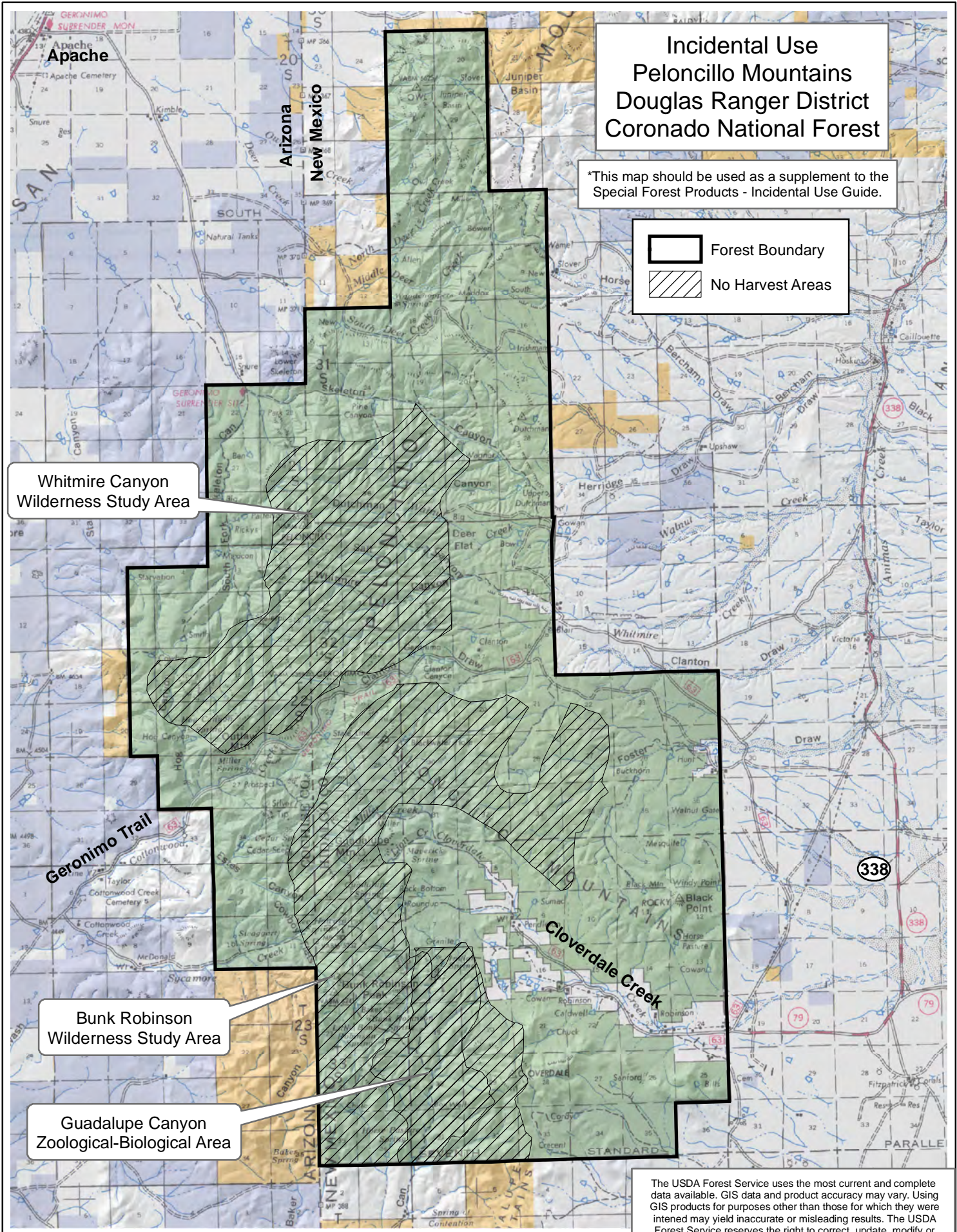
\*This map should be used as a supplement to the  
Special Forest Products - Incidental Use Guide.

Forest Boundary

No Harvest Areas

The USDA Forest Service uses the most current and complete data available. GIS data and product accuracy may vary. Using GIS products for purposes other than those for which they were intended may yield inaccurate or misleading results. The USDA Forest Service reserves the right to correct, update, modify or replace GIS products without notification. This map is not a legal land line or ownership document. Public lands are subject to change and leasing, and may have access restrictions; check with local offices. Obtain permissions before entering private land.





Incidental Use  
Peloncillo Mountains  
Douglas Ranger District  
Coronado National Forest

\*This map should be used as a supplement to the  
Special Forest Products - Incidental Use Guide.

Forest Boundary

No Harvest Areas

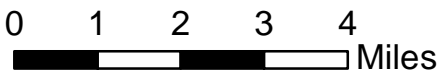
Whitmire Canyon  
Wilderness Study Area

Bunk Robinson  
Wilderness Study Area

Guadalupe Canyon  
Zoological-Biological Area

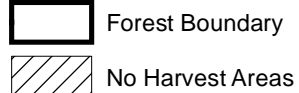
The USDA Forest Service uses the most current and complete data available. GIS data and product accuracy may vary. Using GIS products for purposes other than those for which they were intended may yield inaccurate or misleading results. The USDA Forest Service reserves the right to correct, update, modify or replace GIS products without notification. This map is not a legal land line or ownership document. Public lands are subject to change and leasing, and may have access restrictions; check with local offices. Obtain permissions before entering private land.

Map Produced: April 2020

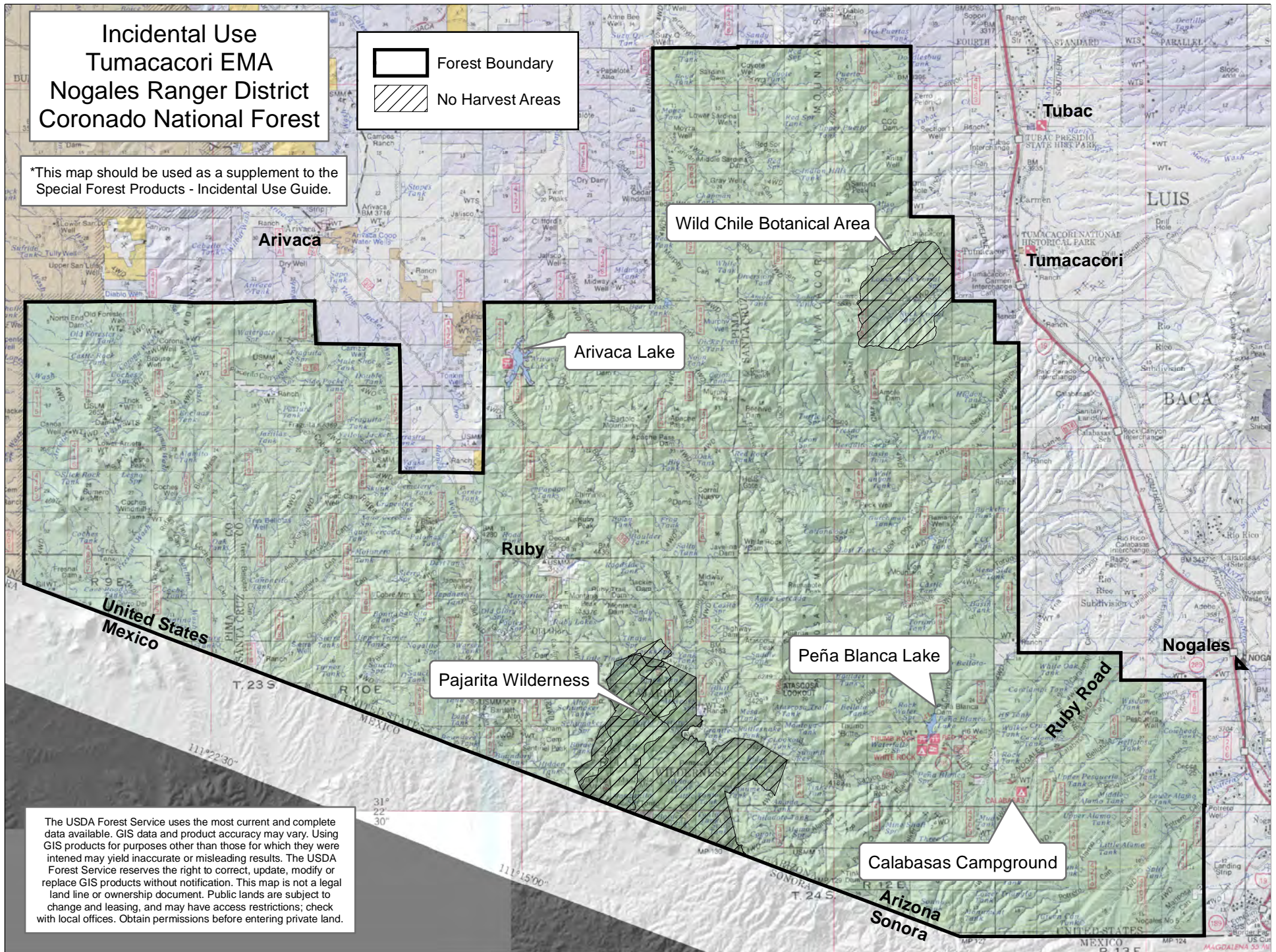




# Incidental Use Tumacacori EMA Nogales Ranger District Coronado National Forest



\*This map should be used as a supplement to the  
Special Forest Products - Incidental Use Guide.



The USDA Forest Service uses the most current and complete data available. GIS data and product accuracy may vary. Using GIS products for purposes other than those for which they were intended may yield inaccurate or misleading results. The USDA Forest Service reserves the right to correct, update, modify or replace GIS products without notification. This map is not a legal land line or ownership document. Public lands are subject to change and leasing, and may have access restrictions; check with local offices. Obtain permissions before entering private land.



Map Produced: April 2020



# Incidental Use Santa Rita Mountains Nogales Ranger District Coronado National Forest

\*This map should be used as a supplement to the  
Special Forest Products - Incidental Use Guide.

- Forest Boundary
- No Harvest Areas

Madera Canyon

Onyx Cave  
National Natural Landmark

Arizona Trail

Mt. Wrightson Wilderness

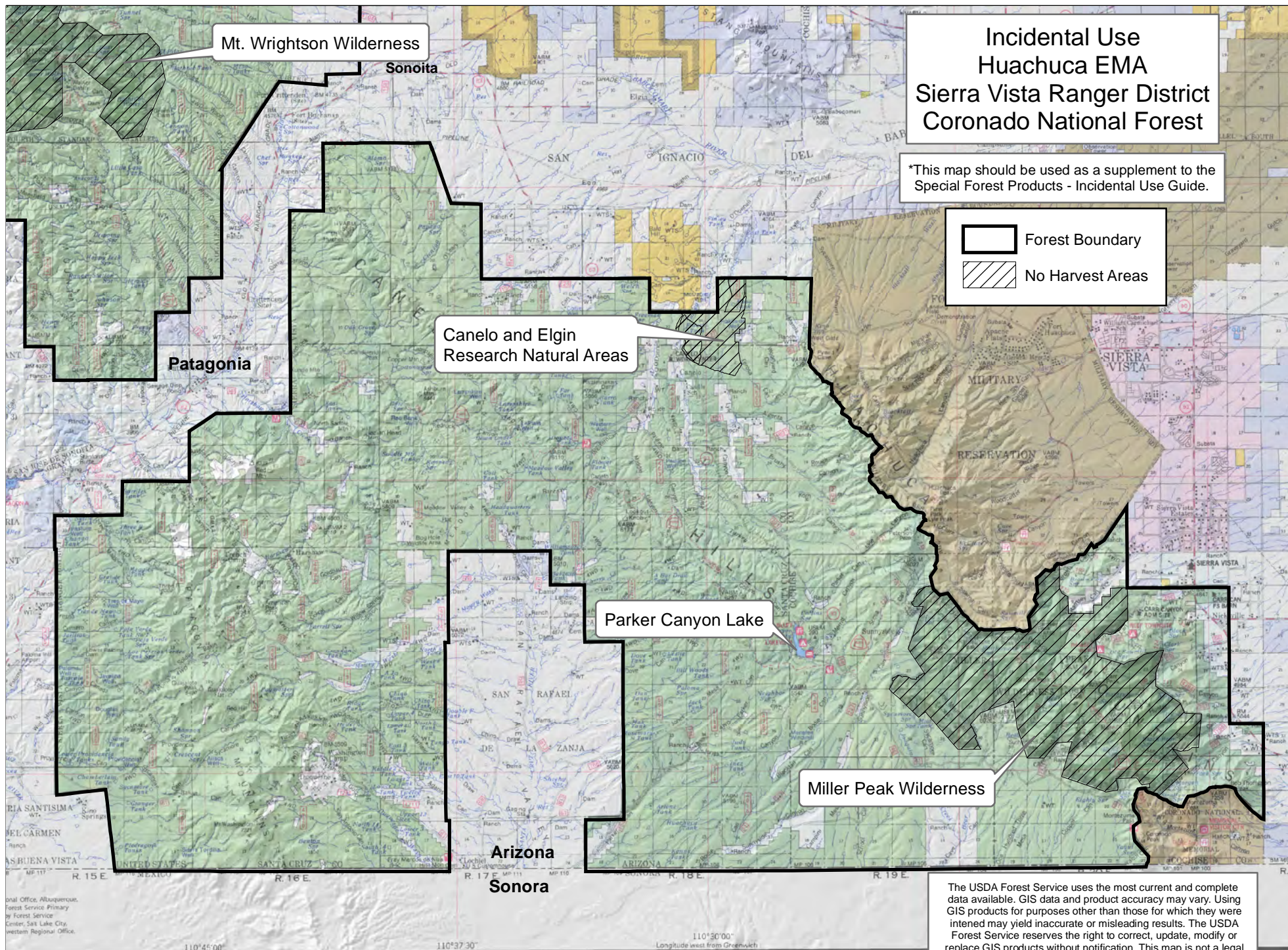
The USDA Forest Service uses the most current and complete data available. GIS data and product accuracy may vary. Using GIS products for purposes other than those for which they were intended may yield inaccurate or misleading results. The USDA Forest Service reserves the right to correct, update, modify or replace GIS products without notification. This map is not a legal land line or ownership document. Public lands are subject to change and leasing, and may have access restrictions; check with local offices. Obtain permissions before entering private land.

0 1 2 3 4  
Miles



Map Produced: April 2020





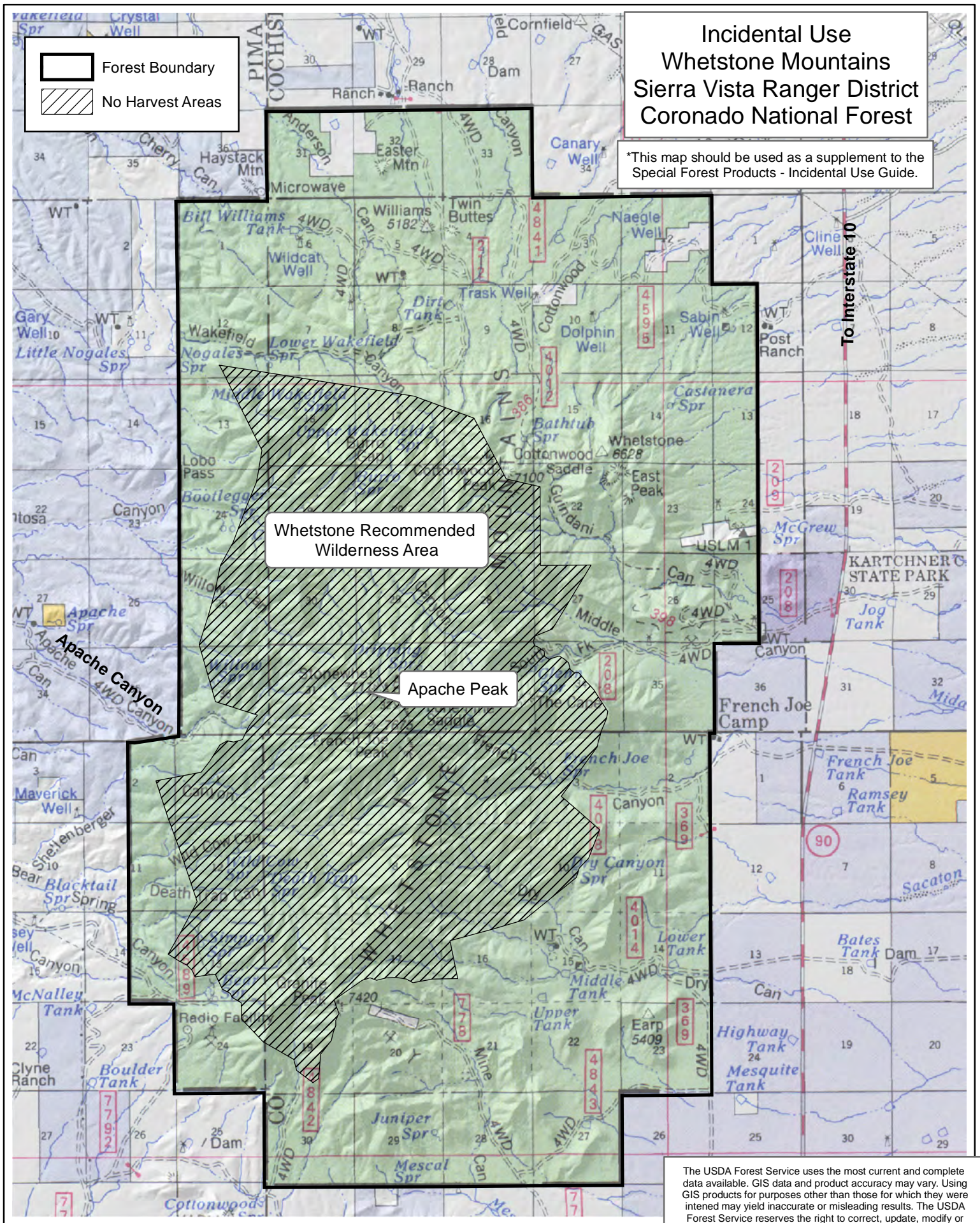
**Incidental Use  
Huachuca EMA  
Sierra Vista Ranger District  
Coronado National Forest**

\*This map should be used as a supplement to the  
Special Forest Products - Incidental Use Guide.

- Forest Boundary
- No Harvest Areas

The USDA Forest Service uses the most current and complete data available. GIS data and product accuracy may vary. Using GIS products for purposes other than those for which they were intended may yield inaccurate or misleading results. The USDA Forest Service reserves the right to correct, update, modify or replace GIS products without notification. This map is not a legal land line or ownership document. Public lands are subject to change and leasing, and may have access restrictions; check with local offices. Obtain permissions before entering private land.







# Incidental Use Pinaleno Mountains Safford Ranger District Coronado National Forest

\*This map should be used as a supplement to the  
Special Forest Products - Incidental Use Guide.

- Forest Boundary
- No Harvest Areas

Mt. Graham Wilderness  
Study Area

Mt. Graham Astrophysical &  
Biological Research Area

Wet Canyon Talussnail  
Zoological Area

Greasewood Mountain

Map Produced: April 2020



0 1.5 3 4.5 6 Miles

The USDA Forest Service uses the most current and complete data available. GIS data and product accuracy may vary. Using GIS products for purposes other than those for which they were intended may yield inaccurate or misleading results. The USDA Forest Service reserves the right to correct, update, modify or replace GIS products without notification. This map is not a legal land line or ownership document. Public lands are subject to change and leasing, and may have access restrictions; check with local offices. Obtain permissions before entering private land.



# Incidental Use Galiuro Mountains Safford Ranger District Coronado National Forest

\*This map should be used as a supplement to the Special Forest Products - Incidental Use Guide.

- Forest Boundary
- No Harvest Areas

Maverick Mountain

Powers Garden

Kennedy Peak

Powers Cabin

Sunset Peak

Kielberg Peak

Basset Peak

Galiuro Wilderness

Kielberg Canyon

Harrison Canyon

Bonta Aravaipa Road

Redington

Redfield Canyon Wilderness

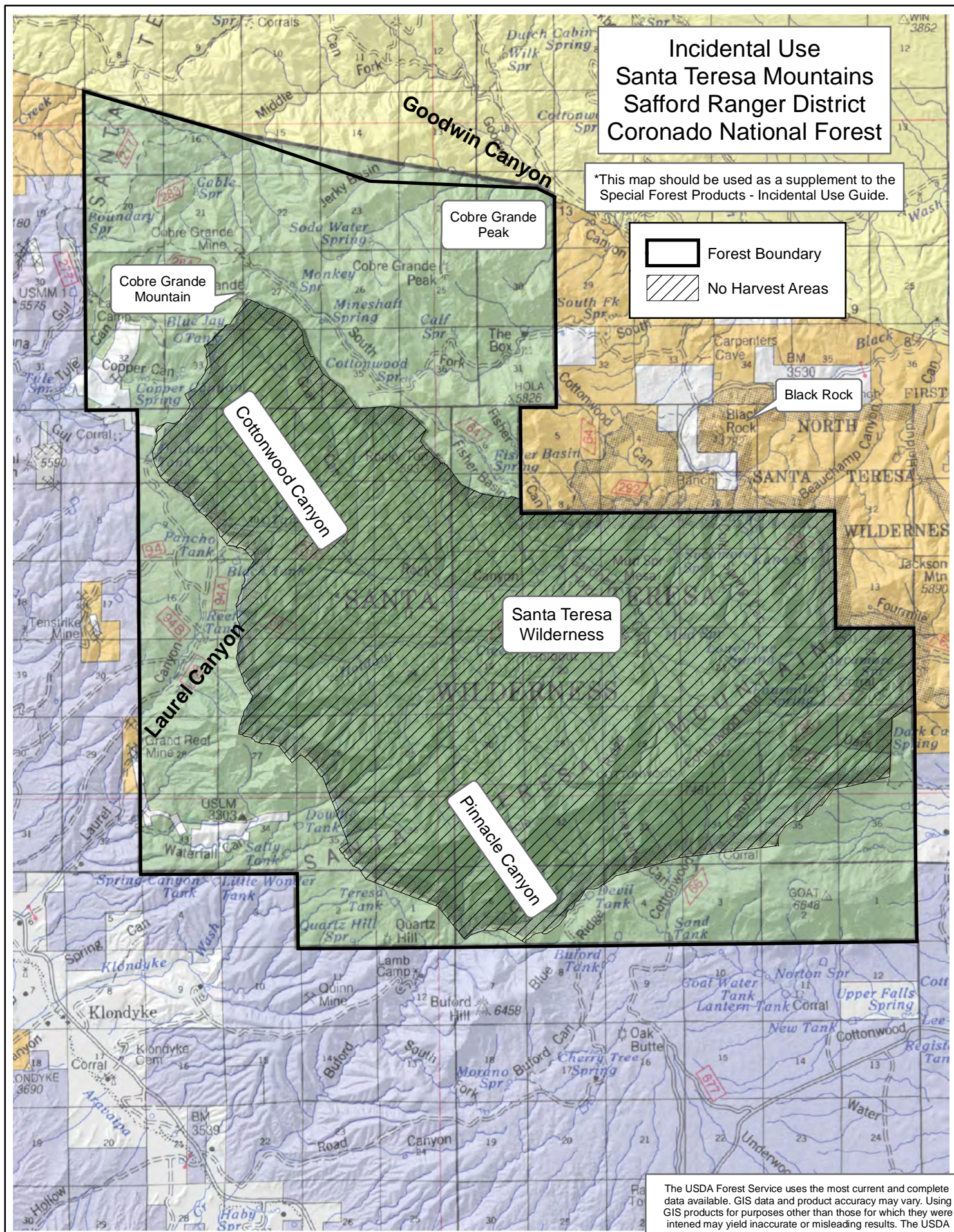
The USDA Forest Service uses the most current and complete data available. GIS data and product accuracy may vary. Using GIS products for purposes other than those for which they were intended may yield inaccurate or misleading results. The USDA Forest Service reserves the right to correct, update, modify or replace GIS products without notification. This map is not a legal land line or ownership document. Public lands are subject to change and leasing, and may have access restrictions; check with local offices. Obtain permissions before entering private land.

Map Produced: March 2020



0 1 2 3 4 Miles





Incidental Use  
Santa Teresa Mountains  
Safford Ranger District  
Coronado National Forest


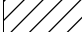
\*This map should be used as a supplement to the  
Special Forest Products - Incidental Use Guide.

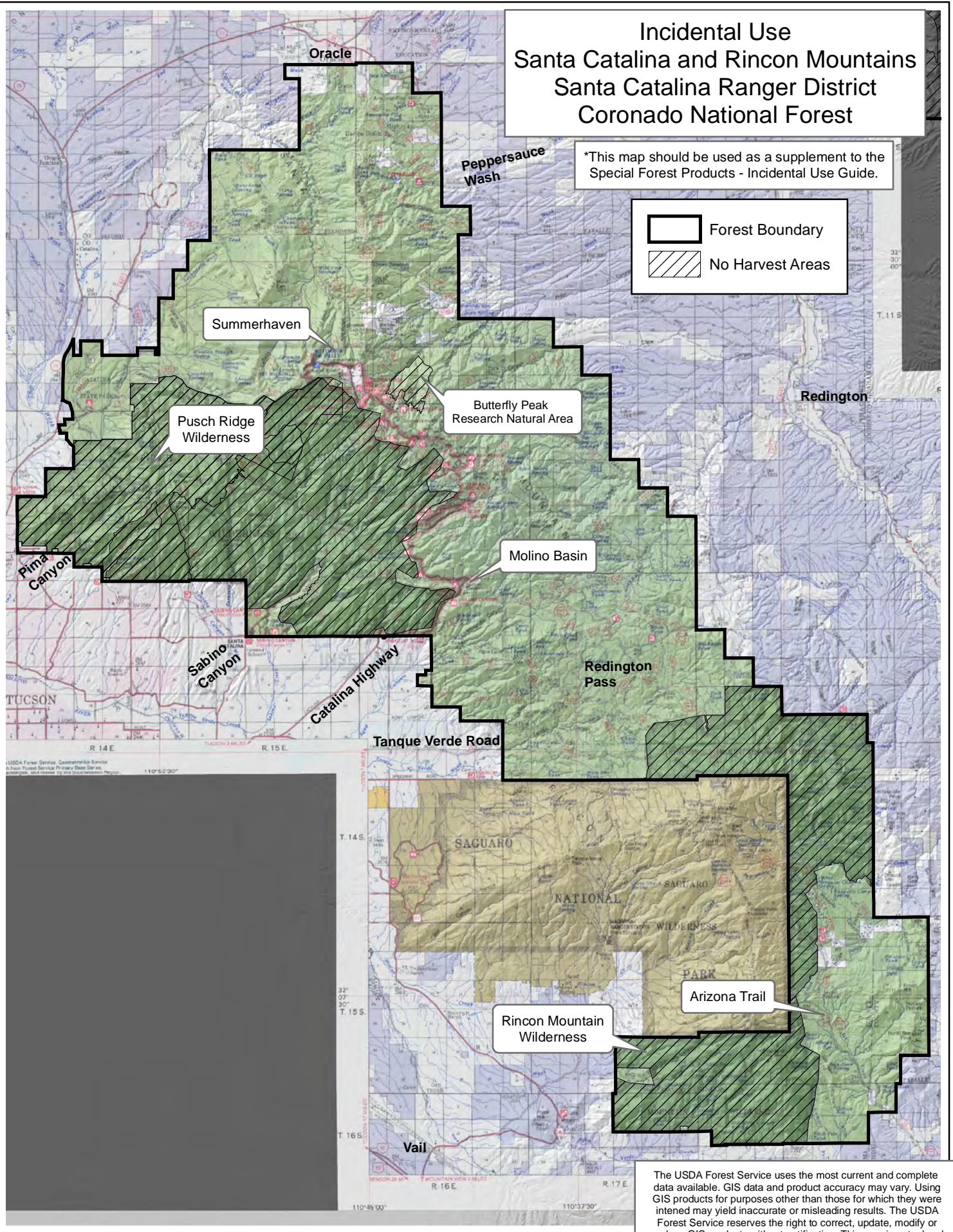
- Forest Boundary
- No Harvest Areas



# Incidental Use Santa Catalina and Rincon Mountains Santa Catalina Ranger District Coronado National Forest

\*This map should be used as a supplement to the  
Special Forest Products - Incidental Use Guide.

-  Forest Boundary
-  No Harvest Areas



Map Produced: April 2020



0 2 4 6 8 Miles

The USDA Forest Service uses the most current and complete data available. GIS data and product accuracy may vary. Using GIS products for purposes other than those for which they were intended may yield inaccurate or misleading results. The USDA Forest Service reserves the right to correct, update, modify or replace GIS products without notification. This map is not a legal land line or ownership document. Public lands are subject to change and leasing, and may have access restrictions; check with local offices. Obtain permissions before entering private land.