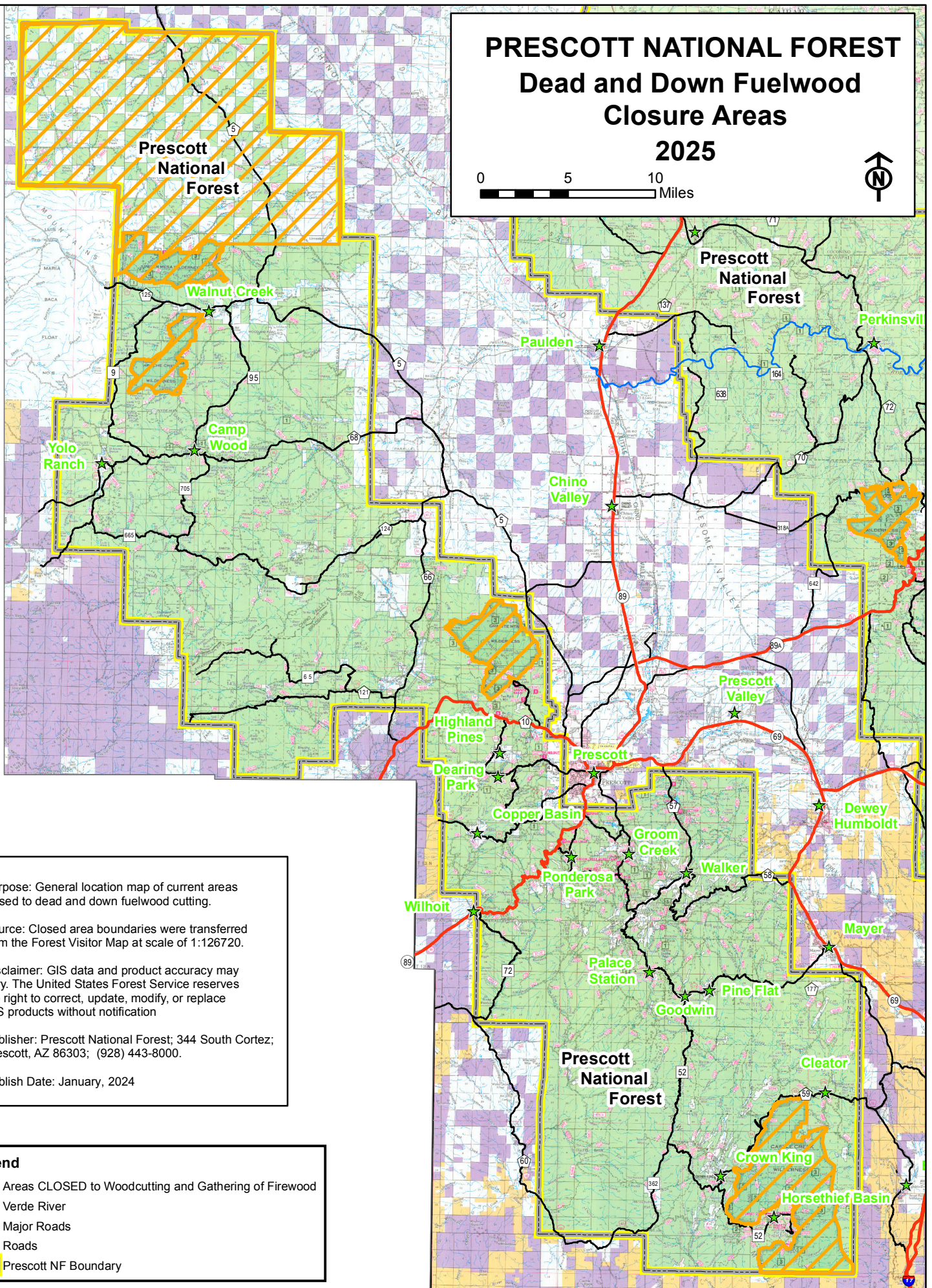


PRESCOTT NATIONAL FOREST Dead and Down Fuelwood Closure Areas 2025

0 5 10 Miles



Purpose: General location map of current areas closed to dead and down fuelwood cutting.






Source: Closed area boundaries were transferred from the Forest Visitor Map at scale of 1:126720.

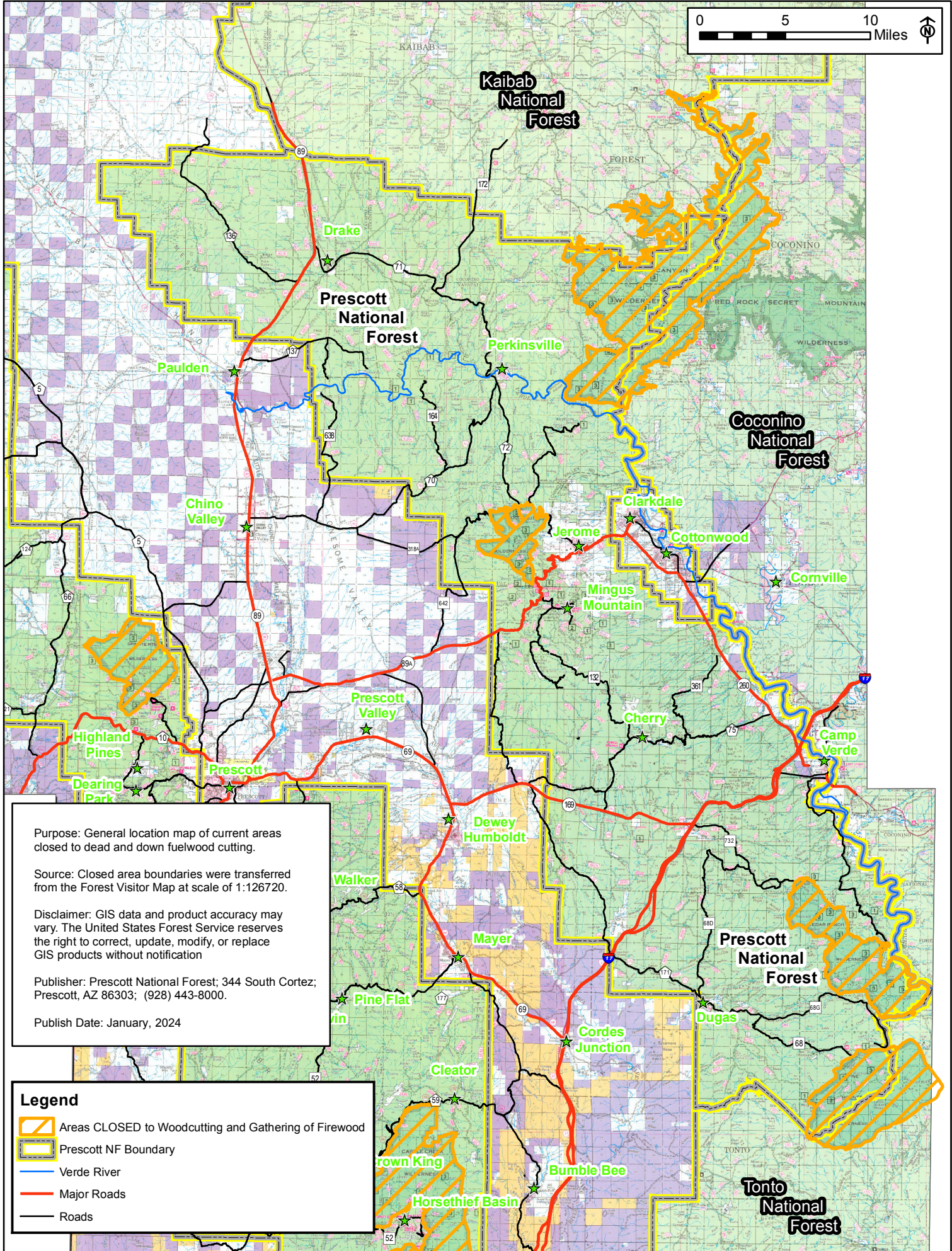
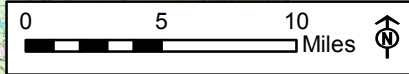
Disclaimer: GIS data and product accuracy may vary. The United States Forest Service reserves the right to correct, update, modify, or replace GIS products without notification

Publisher: Prescott National Forest; 344 South Cortez; Prescott, AZ 86303; (928) 443-8000.

Publish Date: January, 2024

Legend

-  Areas CLOSED to Woodcutting and Gathering of Firewood
-  Verde River
-  Major Roads
-  Roads
-  Prescott NF Boundary



Purpose: General location map of current areas closed to dead and down fuelwood cutting.





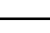
Source: Closed area boundaries were transferred from the Forest Visitor Map at scale of 1:126720.

Disclaimer: GIS data and product accuracy may vary. The United States Forest Service reserves the right to correct, update, modify, or replace GIS products without notification.

Publisher: Prescott National Forest; 344 South Cortez; Prescott, AZ 86303; (928) 443-8000.

Publish Date: January, 2024

Legend

-  Areas CLOSED to Woodcutting and Gathering of Firewood
-  Prescott NF Boundary
-  Verde River
-  Major Roads
-  Roads