

**Wynoochee Proposed Action
Roads and Restoration Projects
Olympic National Forest**

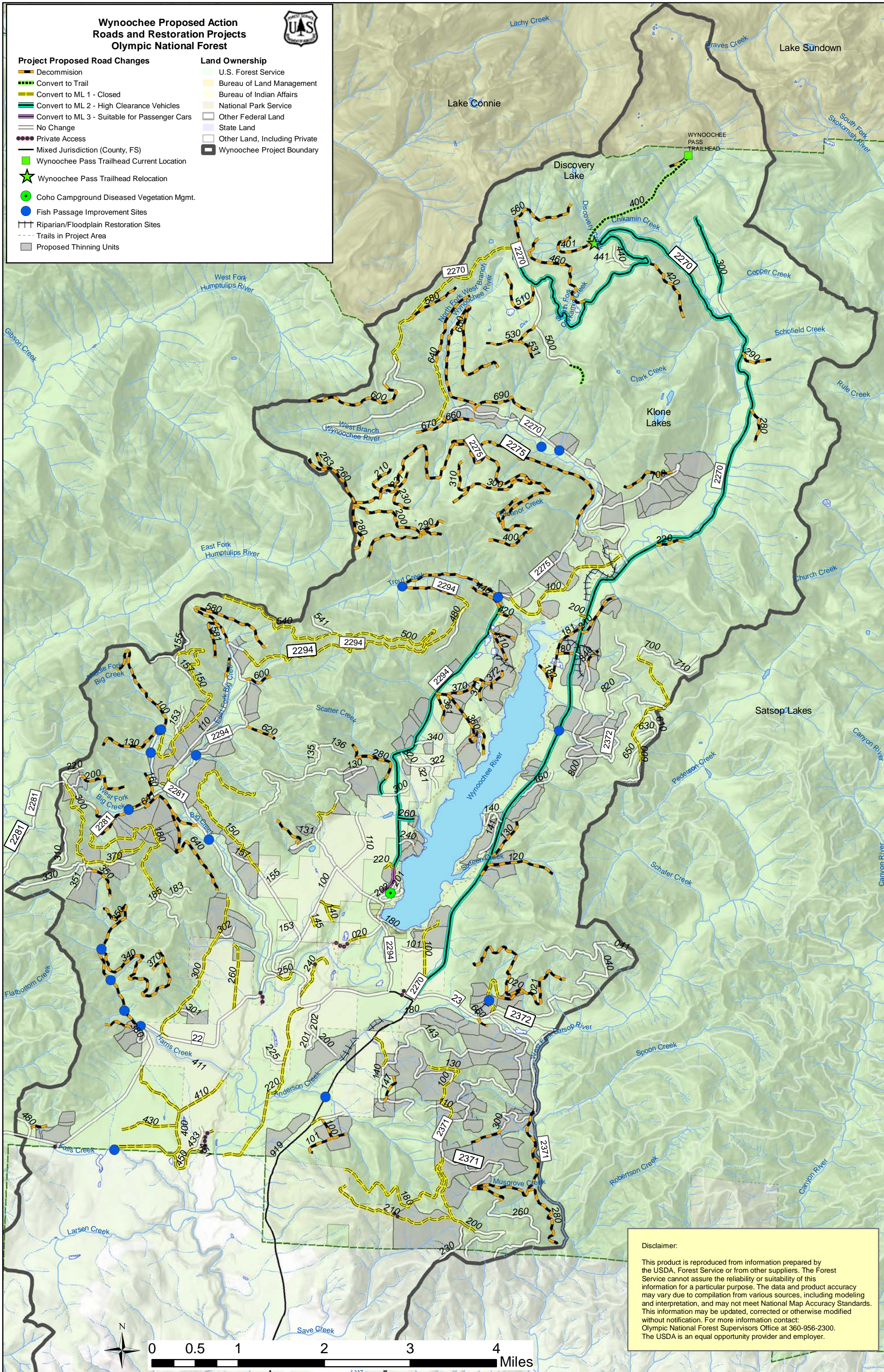


Project Proposed Road Changes

- Decommission
- Convert to Trail
- Convert to ML 1 - Closed
- Convert to ML 2 - High Clearance Vehicles
- Convert to ML 3 - Suitable for Passenger Cars
- No Change
- Private Access
- Mixed Jurisdiction (County, FS)
- Wynoochee Pass Trailhead Current Location
- Wynoochee Pass Trailhead Relocation
- Coho Campground Diseased Vegetation Mgmt.
- Fish Passage Improvement Sites
- Riparian/Floodplain Restoration Sites
- Trails in Project Area
- Proposed Thinning Units

Land Ownership

- U.S. Forest Service
- Bureau of Land Management
- Bureau of Indian Affairs
- National Park Service
- Other Federal Land
- State Land
- Other Land, Including Private
- Wynoochee Project Boundary



Disclaimer:
This product is reproduced from information prepared by the USDA, Forest Service or from other suppliers. The Forest Service cannot assure the reliability or suitability of this information for a particular purpose. The data and product accuracy may vary due to compilation from various sources, including modeling and interpretation, and may not meet National Map Accuracy Standards. This information may be updated, corrected or otherwise modified without notification. For more information contact: Olympic National Forest Supervisors Office at 360-956-2300. The USDA is an equal opportunity provider and employer.