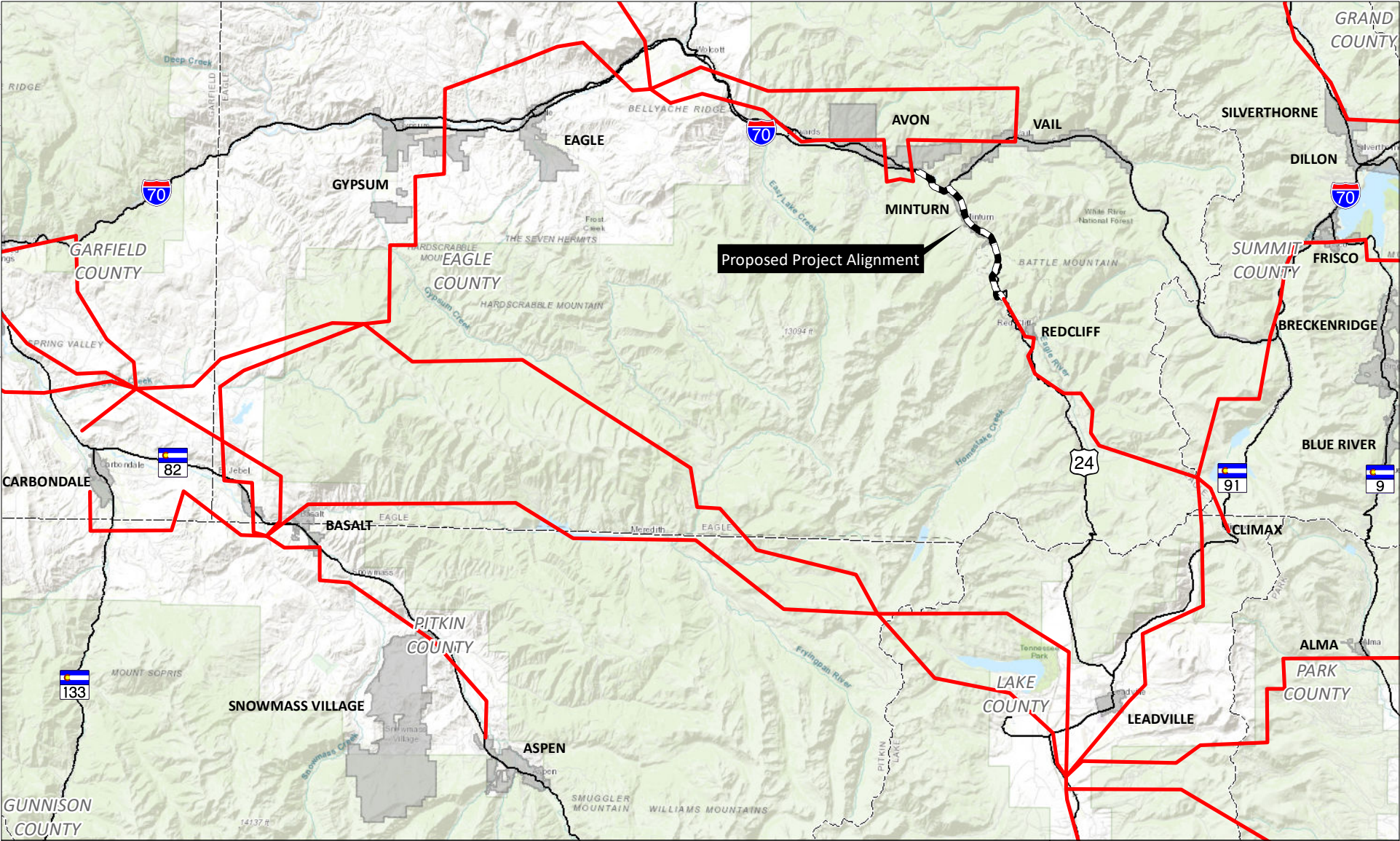


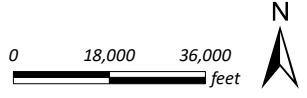
Path: P:\101000\Projects\10117 Gilman-Avon-HCE 115kV Transmission Line\Maps\EA\10117 Regional Map.mxd



Proposed Project Alignment

- Existing Transmission Line
- Proposed Transmission Line
- Highway
- County Boundary

Avon to Gilman 115-kV  
Transmission Line Project  
Regional Overview



File: 10117 Regional Map.mxd (WH)  
April 16, 2019

