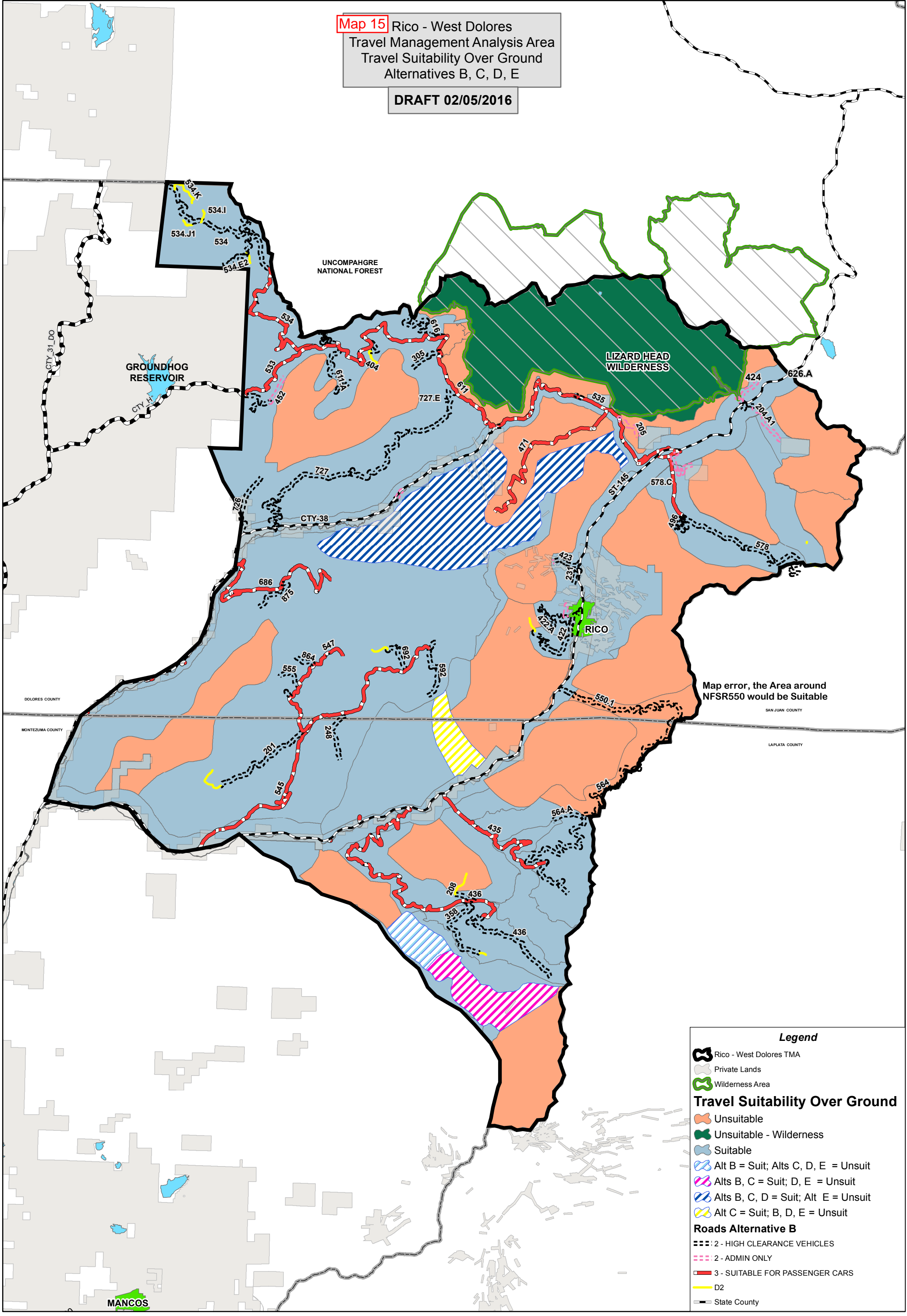


**Map 15** Rico - West Dolores  
 Travel Management Analysis Area  
 Travel Suitability Over Ground  
 Alternatives B, C, D, E  
**DRAFT 02/05/2016**



Map error, the Area around NFSR550 would be Suitable

**Legend**

- Rico - West Dolores TMA
- Private Lands
- Wilderness Area

**Travel Suitability Over Ground**

- Unsuitable
- Unsuitable - Wilderness
- Suitable
- Alt B = Suit; Alts C, D, E = Unsuit
- Alts B, C = Suit; D, E = Unsuit
- Alts B, C, D = Suit; Alt E = Unsuit
- Alt C = Suit; B, D, E = Unsuit

**Roads Alternative B**

- 2 - HIGH CLEARANCE VEHICLES
- 2 - ADMIN ONLY
- 3 - SUITABLE FOR PASSENGER CARS
- D2
- State County

The USFS and BLM attempt to use the most current and complete geospatial data available. Geospatial data accuracy varies by theme on the map. Using the map for other than their intended purpose may yield inaccurate or misleading results. The USFS and BLM reserve the right to correct, update, or modify geospatial inputs without notification.

