

Motor Vehicle Use Map Designations of Trails

Trail #	Trail Name	Alternative A (No Action)	Alternative B Modified
607	Bear Creek	6 miles designated for Trails Open to Motorcycles Only, Seasonal use and 5 miles nonmotorized	1.72 miles designated for Trails Open to Motorcycles Only, Seasonal and 11.29 miles nonmotorized
	Black Mesa OHV Loops (New)	na	Trails Open to Wheeled Vehicles Only 62" in Width or Less, Seasonal
641	Burnett Creek	Trails Open to Motorcycles Only, Seasonal	nonmotorized
208	Calico North	Trails Open to Motorcycles Only, Seasonal	Trails Open to Motorcycles Only, Seasonal
211	Calico South	Trails Open to Motorcycles Only, Seasonal	Trails Open to Motorcycles Only, Seasonal
	Corral Draw Ext (New)	na	Trails Open to Motorcycles Only, Seasonal
629	Eagle Peak	Trails Open to Motorcycles Only, Seasonal	Trails Open to Motorcycles Only, Seasonal
646	East Fall Creek	Trails Open to Motorcycles Only, Seasonal	nonmotorized
638	East Fork	Trails Open to Motorcycles Only, Seasonal	Trails Open to Motorcycles Only, Seasonal
	East Fork Extension ¹	na	Trails Open to Motorcycles Only, Seasonal
741	East Twin Springs	Trails Open to Motorcycles Only, Seasonal	Trails Open to Motorcycles Only, Seasonal
618	Gold Run	Trails Open to Motorcycles Only, Seasonal	Trails Open to Motorcycles Only, Seasonal
608	Grind-stone	Trails Open to Motorcycles Only, Seasonal	Trails Open to Motorcycles Only, Seasonal
	Ground-hog OHV (New)	na	Trails Open to Wheeled Vehicles Only 62" in Width or Less, Seasonal
614	Hillside Connector	nonmotorized	Trails Open to Motorcycles Only, Seasonal
626	Horse Creek	Trails Open to Motorcycles Only, Seasonal	nonmotorized
639	Johnny Bull	Trails Open to Motorcycles Only, Seasonal	Trails Open to Motorcycles Only, Seasonal
609	Little Bear	Trails Open to Motorcycles Only, Seasonal	Trails Open to Motorcycles Only, Seasonal
0	Little Bear Pack (New)	nonmotorized	nonmotorized
738	Loading Pen	nonmotorized	Trails Open to Motorcycles Only, Seasonal
	Lone Cone OHV (New)	na	Trails Open to Wheeled Vehicles Only 62" in Width or Less, Seasonal

¹ This extension would result from converting 587B and 578B1 to single track trail.

Trail #	Trail Name	Alternative A (No Action)	Alternative B Modified
734	Lower Ryman	nonmotorized	decommission
	Pack Loop Connector (New)	na	nonmotorized
645	Priest Gulch	Trails Open to Motorcycles Only, Seasonal	Trails Open to Motorcycles Only, Seasonal
435	Rough Canyon	Trails Open to Motorcycles Only, Seasonal	Trails Open to Motorcycles Only, Seasonal
735	Ryman Creek	Trails Open to Motorcycles Only, Seasonal	nonmotorized
	Sockrider (New)	nonmotorized	nonmotorized
627	Spring Creek	2.29 miles displayed as open to OHV and 1.1 miles displayed as closed to OHV	nonmotorized
	Spring Creek Extension Connection (new and pending additional analysis and public involvement)	na	Trails Open to Motorcycles Only, Seasonal
624	Stoner	na	Trails Open to Motorcycles Only, Seasonal
	Taylor OHV (New)	na	Trails Open to Wheeled Vehicles Only 62" in Width or Less, Seasonal
644	Tender-Foot	nonmotorized	nonmotorized
640	West Fall Creek	Trails Open to Motorcycles Only, Seasonal	1.8 miles designated for Trails Open to Motorcycles Only, Seasonal and 1.6 miles nonmotorized
739	West Twin Springs	Trails Open to Motorcycles Only, Seasonal	Trails Open to Motorcycles Only, Seasonal
207	Wildcat	2.75 miles displayed as open OHV and 3.30 miles displayed closed to OHV	nonmotorized
619	Willow Divide OHV	ATV/UTV and Trails Open to Motorcycles Only, Seasonal (50")	Trails Open to Wheeled Vehicles Only 62" in Width or Less, Seasonal
202	Winter	Trails Open to Motorcycles Only, Seasonal	nonmotorized

The following actions will be implemented in accordance with FSM 2353, FSH 2309.18, FSM 7715.5, FSM 7723, and EM (Engineering Management) 7720-104 FSM 7732 and FSH 7709.59, chapter 60 and the Region 2 FSH 2509.25, Watershed Conservation Practices Handbook (2006), Forest Service staff also seek guidance from Technical Guides published by the Forest Service Technology and Development Program, Missoula, MT. Trail construction and maintenance notebook. 0723-2806-MTDC and the Wetland trail design and construction. 0723-2804-MTDC and the *Traffic Control Devices Handbook* and *Geometric Design of Low Volume Local Roads* (technical guides).

Specific Actions by Trail Name

Trail Name or Area	Action²	Purpose of the Action	How the Action would be Implemented
Calico Trail	Trail developments on northernmost four miles of the Calico NRT	Improve wetlands	See map and table below.
Corral Draw	Extend Corral Draw Trail approximately 350 yards to the northwest, across the Colorado Trail, and tie it in to NFSR550 (the Hotel Draw Road), which connects to NFSR564 (the Divide Road).	Provide connection to Hermosa Landscape	Wetland or riparian vegetation was not identified as a concern for this site.
East Fork Trail	Decommission the un-used section of trail that passes through fens near Bolam Pass	Maintain Fens	Past signing has discouraged use of this section of trail. Limited actions are necessary for re-vegetation. Hydrologist would monitor this site for effective re-vegetation.
East Fork Trail	Reroute the East Fork Trail around the meadow at the trailhead. Approximately 1,000 feet of trail would be moved from its current location to the nearby trees (500-1000 feet from original alignment)	Reduce braiding and trenching in wet meadow	Hydrologist would be consulted for appropriate techniques.
East Fork Trail	Reroute trail around three wetlands identified by hydrologist along this trail	Improve wetland	Hydrologist would be consulted for appropriate techniques.
Fish Creek Trailhead	Move Fish Creek Trailhead place boulders or other barriers to discourage use at headwaters of Fish Creek.	Establish a more manageable closure point to discourage off-trail ATV/UTV riding	Lighter decommission methods have been unsuccessful in this area so road ripping, seeding and boulder placement will be employed

Trail Name or Area	Action ²	Purpose of the Action	How the Action would be Implemented
			immediately. Re-establish natural water drainage patterns for the decommissioned section of road.
Headwaters of Fish Creek and Willow Creek	Install boulders, fences, or signs at the headwaters of Fish Creek and Willow Creek. Discourage off-road riding and promote wetland habitat, willows, beaver, etc.	Same as above	
Johnny Bull Trail	Add a bridge across the West Fork of the Dolores River near the trailhead on Cty Rd 38.	Improve trail user experience	Design bridge to accommodate trail uses in keeping with engineering handbooks and consultation with hydrologist
Lizard Head Pass	Set boulders to establish boundaries for parking vehicles and camping	Reduce compaction and bare ground created by high levels of dispersed camping	Upslope from the sheep corrals place boulders to limit vehicle use on the benches above the sheep corrals.
Loading Pen Trail	Loading Pen Trail would be managed for Trails Open to Motorcycles Only, Seasonal use. Reconstruct sections of the trail as needed to accommodate design parameters for Trails Open to Motorcycles Only, Seasonals.	Provide recreation opportunity and improve on a sustainable trail design	500 foot realignment may be employed to improve drainage. Climbing turns may also be added. Wetland or riparian vegetation was not identified as a concern for this site.
Lone Cone Area	Convert the following ML2 roads to 62-inch trail to be named "Lone Cone OHV Trail"; NFSR543.J2 (1.41miles) and NFSR534.J (1.49 miles). Trail would have a Special Designation on the MVUM for Open to Wheeled Motor Vehicles 62 inches or less.	Provide recreation opportunity and a more sustainable trail system and 'alternative' to off-trail riding in wet areas. Reduce road maintenance burden.	Reconstruct drainage features and stream crossings in keeping with handbook direction for ATV trails (FSM 2350 Ch. 10 & 18). Re-shape trail surface if needed. Re-alignments up to 500 feet may be employed to reduce impacts to wetlands.

Trail Name or Area	Action ²	Purpose of the Action	How the Action would be Implemented
New Groundhog OHV Loop	Establish Groundhog OHV loop. If appropriate use unauthorized routes in this area	Provide trail riding in sustainable location and meet high demands for UTV riding from Groundhog area.	Layout trail to avoid wetlands. Trail tread, drainage features and stream crossings would follow trail management handbook design for ATV trails. If unauthorized routes are in proper location they may be used, but if not, construct new trail tread in better location.
New Black Mesa OHV Loop	Create two OHV trail loops off of NFSR 611 A (Black Mesa A) in the Black Mesa area. Loops would be created from a combination of dual-use designation on ML1 roads and new construction along unauthorized routes. Trails may be temporarily closed if a timber sale is proposed.	Provide recreation opportunity and a more sustainable trail system and 'alternative' to off-trail riding in wet areas.	Reconstruct drainage features or stream crossings in keeping with handbook direction for ML1 roads and ATV trails. Reshape trail surface if needed. Wetland or riparian vegetation was not identified as a concern for this site.
New Taylor OHV Loop	Add a new 62-inch OHV trail loop off of NFSR 201 (Pipe Creek). The proposed new 3-mile loop would use 2.6 miles of NFSR 202 (Siphon Spring) as an ML1 road. To complete the loop, approximately 0.49 miles of unauthorized road would be added to the road system as an ML1 road and OHV trail (dual designation). If needed for a timber sale, the trail would be temporarily closed to recreation use.	Provide a minor addition to riding opportunity on Taylor Mesa	Reconstruct drainage features or stream crossings in keeping with handbook direction for ML1 roads and ATV trails. Re-shape trail surface if needed. Re-alignments up to 500 feet may be employed to reduce impacts to a nearby wetland. These actions would avoid long-term adverse impacts to wetlands.
Ryman Creek	Decommission a section of the Upper Ryman Creek Trail	Reduce soil, stream and wetland impacts. Focus trail maintenance on a single trail alignment.	Consult hydrologist and restore natural water flow patterns through decommissioning efforts.

Trail Name or Area	Action ²	Purpose of the Action	How the Action would be Implemented
Ryman Creek	Reconstruct the upper end of the Ryman Creek trail to address steep grades.	Reduce downcutting, improve trail sustainability and enhance trail user experience (nonmotorized)	Use trail re-alignment to add switchbacks to the steep section of trail near the trailhead on FR564 (Divide Road).
Spring Creek Extension Connection	Place a dual delegation on NFSR 692A to manage as a ML1 road and single track motorized trail. Undertake new analysis for a new trail to connect the end of NFSR 692A to Stoner Creek trail. If new trail is not approved, the dual delegation of NFSR 692A would not occur	Provide a connection from Stoner Mesa to Taylor Mesa while maintaining fish habitat and outstanding water characteristics of spring creek proper.	Consult hydrologist and fisheries biologist for layout of the new section of trail.
Tenderfoot Trail	Reroute 1.5 miles of trail to its terminus at the Calico Trail.	Improve wetlands, springs and seeps and improve trail user experience (nonmotorized)	Avoid wetlands, springs and seeps.
New East Fork Extension (Tin Can Basin NFSR 578B and B1)	At the intersection of 578 and 578B, close FR578B and B1 and convert these two roads to single track trail. Uses include pack and saddle, mountain bike, hiker pedestrian and Trails Open to Motorcycles Only, Seasonal.	Reduce or eliminate effects to fens.	Consult hydrologist to determine methods to re-shape roadbed so that the portion not used as trail can re-vegetate and drains properly. Establish trail tread, drainage and spring crossings using trails management handbook. Realign a portion of trail to avoid direct contact with spring source.
Winter Trail	The trail crosses a small drainage that feeds the fen. This crossing should be hardened. Also, there is a turnpike that crosses a wetland bordering the fen that needs maintenance	Reduce impacts to wetlands and fens, improve trail user experience (nonmotorized)	Improve turnpike and trail tread through maintenance. Consult hydrologist

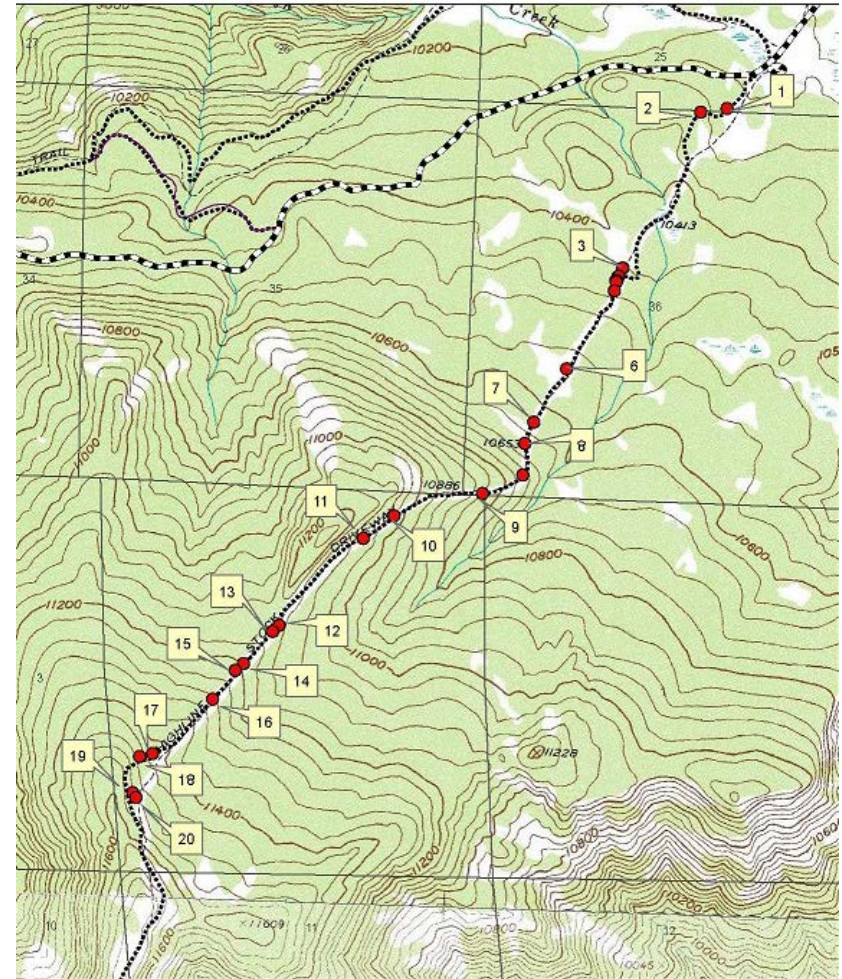
Trail Name or Area	Action ²	Purpose of the Action	How the Action would be Implemented
Sockrider Trail	Add Sockrider Trail to the Forest trail system managed as a pedestrian trail	Provide alternate route for nonmotorized users.	Trail layout and tread would be designed according to the trail management handbooks for pedestrian only. Plant surveys would occur as needed and trail layout would avoid impacts to rare plants. Wetland or riparian vegetation was not identified as a concern for this site.
Spring Creek Fish Barrier removal	Convert NFSR547 0.45 miles of ML3 road and 0.54 miles of ML2 road to single track trail and this include removal of culvert (fish passage barrier).	Fish passage to improve habitat for threatened fish species. Continue recreation trail opportunity for nonmotorized uses.	Fish biologist will design project in consultation with FWS. Engineering will design new terminus (turnaround) for FR547.
Willow Divide	Change the designation of the Willow Divide OHV Trail to a Special Vehicle Designation Route, open to Wheeled Vehicles 62" or less in Width.	Increase opportunity for popular UTVs	Physical work to the trail would not be necessary to accommodate this change.

Calico Trail Reconstruction;

location numbers correspond to adjacent map)

Location	Description
1	Reroute approx. 700ft of trail 300ft north west of current alignment out of the meadow and up into the timber.
2	Harden 25ft of trail with sod block. Located by the seep just south of the 1st turnpike.
3	Extend existing boardwalk by 75ft.
4	Reroute trail between existing boardwalk and long turnpike
6	Extend existing turnpike by 320ft at the north end and 75ft at the south end.
7	Trail segment between the long existing turnpike and the next wet meadow - reroute away from the head cutting drainage per hydrology.
8	Install 165ft long boardwalk in the wet meadow
9	Repair trail by rutted out seep on 10% grade by installing a culvert and hardening 20ft of trail above and below the culvert with sod block.
10	Install 80' of turnpike with 3 culverts from the existing culvert on the North end to the hardened rock structure on the south end
11	Harden rutted out drainage feature with crushed rock.
12	Harden trenched wet section of trail with crushed rock - 20ft.
13	Harden Rutted out drainage feature with crushed rock.
14	Trail is eroded and trenched. - Install 5-8 new rock reinforced drainage features every 20 - 50ft as necessary and widen the trenched trail tread.
15	Trail wet and trenched below existing drainage feature- Fill and harden 30ft of trenched trail with crushed rock.
16 & 17	Poor trail alignment - reroute to avoid fall line and wet areas.
18	Reconstruct Switchback into a climbing turn.
19	Seeping hillside on a 15% Grade - Harden / pave with rock and install 3 culverts approx. 75ft.
20	Fill ruts with crushed rock. 100ft

Calico Trail Reconstruction



Dual Designation of Roads/Trails

Road Number and Name	Future Maintenance Level	Miles	Proposed Special Vehicle Designation Routes, Open to Wheeled Vehicles 62 Inches or Less in Width
NFSR 611 A 2 (Black Mesa A 2)	ML1	1.12	Black Mesa OHV
NFSR 611 A 4 (Black Mesa A 4)	ML1	1.78	Black Mesa OHV
NFSR 202 (Siphon Spring)	ML1	2.92	Taylor OHV
NFSR 727 E (Willow Divide E)	ML1	6.86	Willow Divide OHV
Road Number and Name	Future Maintenance Level	Miles	Proposed single track trail Open to Motorcycles Only, Seasonal
NFSR 692A	Pothole A	2.88	Spring Creek Extension Connection

Roads to Convert to Trails

Road Number	Road Name	Segment Length	Alternative A Maintenance Level	Alternative B (Modified)	New Trail Type and Name
547	TAYLOR MESA	0.54	2 - HIGH CLEARANCE VEHICLES	C	ST
547	TAYLOR MESA	0.32	3 - SUITABLE FOR PASSENGER CARS	C	ST
547	TAYLOR MESA	0.13	3 - SUITABLE FOR PASSENGER CARS	C	ST
534.J	LONE CONE J	1.49	2 - HIGH CLEARANCE VEHICLES	C	62-inch
534.J2	LONE CONE J2	1.41	2 - HIGH CLEARANCE VEHICLES	C	62-inch
578.B	TIN CAN BASIN	0.62	2 - HIGH CLEARANCE VEHICLES	C	ST
578.B1	TIN CAN BASIN SPUR	0.82	2 - HIGH CLEARANCE VEHICLES	C	ST

Road Changes by Road Number and Road Name

Road #	Road Name	Changes that would occur under Alternatives B, C, D or E
533	Groundhog	Change 4.5 miles of NFSR 533 (Groundhog) from ML4 to ML3; it would continue as Open to All Motor Vehicles.
149	Hermosa Peak	Close NFSR 149 (Hermosa Peak) at a point approximately 0.4 miles before the current terminus. Change the 0.4-mile closed portion to ML1. This will require vehicles to be parked further away from the Colorado Trail.
201	Pipe Creek	Decommission the last 1.14 miles of ML2 NFSR 201 (Pipe Creek) to restrict use beyond the intersection with Loading Pen Trail. Up to that point, the road designation (open to all motor vehicles) would not change.
205	Meadows	Change 1.05 miles of NFSR 205 (Meadows) from an ML1 to an ML2-Admin road.

Road #	Road Name	Changes that would occur under Alternatives B, C, D or E
206	Trestle	Add 0.10 miles of unauthorized road to system as an ML3 to be named 206 (Trestle) and .09 miles of unauthorized road to ML3 to be named Trestle A. Maintain current designations on NFSR 578 (Hermosa Park/Barlow).
208	Rio Lado	Maintain 0.70 miles of NFSR 208 (Rio Lado) (ML2 and Open to All Types of Motor Vehicles) and decommission the remaining 0.86 miles of this road.
358	Grindstone	Decommission the last 0.24 miles of NFSR 358 (Grindstone). No change to the remainder of this road Open to All Types of Motor Vehicles, ML2 (3.23 miles).
403	Groundhog Point	Designate Motor Vehicle Use for NFSR 403 (Groundhog Point) to the current gate location (1.1 miles of ML2 road). For 1.52 miles beyond the gate, designate ML1, so that public driving of any type of motor vehicle would not be allowed.
404	Black Mesa Spur	Change the terminus of NFSR 404 (Black Mesa Spur). Keep the current ML2 designation for 0.63 miles (Open to All Motor Vehicles) and decommission the remaining 0.63 miles.
422	Burnett Road	Decommission the 0.5 miles of road that parallels the Burnett Road (which may be grown in already), the remainder of this road remains unchanged as Open to All current ML2 designation on 4.1 miles of NFSR 422 (Burnett).
423	Horse Gulch	Establish a new terminus for NFSR 423 (Horse Gulch) on Forest Service lands downslope from the current parking area. No changes are proposed for 1.1 miles of NFSR 423 (Horse Gulch) ML2 road. Road would be designated as Open to All Motor Vehicles (but the public would not be directed to this road as a destination in literature or visitor contacts). Downgrade 0.05 miles of NFSR 423 (Horse Gulch) to ML2-Admin.
424	Lizard Head	Keep ML2 NFSR 424 (Lizard Head) open for .09 miles to the current gate location at the Cross Mountain Trailhead. Beyond the gate, change 0.08 miles of NFSR 424 (Lizard Head) from ML1 to ML2-Admin and decommission the remaining 0.27 miles of this Road.
436	Hillside Drive	Shorten the ML3 portion of NFSR 436 (Hillside Drive) by approximately 0.69 mile and convert that 0.69 portion to ML2.
453	Fish Creek Ditch	Change a portion of NFSR 452 (Fish Creek Ditch) from ML2 (Open to All Motor Vehicles) to ML2-Admin (not designated for public motor vehicle use). The ML2 portion would be 0.46 miles up to the meadow and gate. Beyond the gate, downgrade 1.0 miles to ML2-Admin only for ditch access.
496	Barlow	Change the ML on the first 0.49 miles of NFSR 496 (Barlow) from ML3 to ML2. Maintain 1.11 miles of the ML2 section of this Road. Move the gate downslope and downgrade 0.95 miles from ML2 to ML1 (not open to general public use). Maintain 0.22 miles of ML1 as ML1 and decommission 1.39 miles of ML1 section.
533	Groundhog	Add a new ML2 spur road, 0.09 miles in length, off of NFSR 533 (Groundhog) and near NFSR 403 (Groundhog Point), to be named NFSR 732 (Willow Divide Trailhead), Open to All Motor Vehicle Use.
535	West Dolores	Add a new ML2 spur road, to be named West Dolores B, off of NFSR 535 (West Dolores); the new spur road would be Open to All Motor Vehicle Use, 0.13 miles in length.
538	Johnny Bull	Decommission NFSR 538 (Johnny Bull), which is currently an ML1 road not designated for public motor vehicle use (1.69 miles).

Road #	Road Name	Changes that would occur under Alternatives B, C, D or E
545	Taylor Creek	Downgrade .025 miles of NFSR 545 (Taylor Creek) from ML3 to ML2. No changes are proposed for the remaining sections of this road (13.51 miles of ML3 and 2.42 miles of ML1).
545	Taylor Creek J	Change all of NFSR 545 J (Taylor Creek J) from ML2 to ML1. Remove the motor vehicle designation (road not designated for general public motor vehicle use).
545	Shoas Park	Change the last 1/4 mile of NFSR 545 (Taylor Creek) from ML3 to ML2. Approximately 1/4 mile from intersection with NFSR 592 (Shoas Park) there is a berm and gate that will be maintained. Beyond this point NFSR 545 (Taylor Creek) will continue to be managed as an ML1 road.
547	Taylor Mesa	Convert the upper end of NFSR 547 (Taylor Mesa) to a trail where it crosses Spring Creek. This would convert 0.45 miles of ML3 and 0.54 miles of ML2 road to a trail. The remaining 4.93 miles of NFSR 547 (Taylor Mesa) would not change from its current ML3 designation, open to all motor vehicles.
616	Middle Peak A	Change the designation of NFSR 616 A (Middle Peak A) from an ML2 road to an ML1 road (closed for storage and not designated for motor vehicle use) for its entire length, approximately 1.2 miles.
692	Pothole	Change 1.46 miles of NFSR 692 (Pothole) from ML3 to ML2. Establish a terminus and decommission the last 0.62 mile of this Road.
727	Willow Divide	Change 2.2 miles of NFSR 727 (Willow Divide) from ML3 to ML2, Open to All Motor Vehicles. The remaining 10.70 miles of this road would not change and would remain as ML2, Open to All Motor Vehicles.
204A1	East Fork A1	Change 204A1 (East Fork A1) from ML1 to ML2-Admin (1.69 miles).
422A1	Burnett A1	Change NFSR 422 A 1 (Burnett A 1) from an ML2 to an ML2-Admin only road (0.50 miles)
424A	Lizard Head A	Change 0.87 miles of NFSR 424 A (Lizard Head A) from ML1 to ML2-Admin and decommission 1.45 miles of this Road.
471A	Eagle Creek A	Decommission 0.68 miles of the ML1 NFSR 471 A (Eagle Creek A).
476B	Cayton Campground	Change 1.96 miles of NFSR 476B (Cayton Campground B) from an ML1 to an ML2-Admin only Road.
534E	Lone Cone E 2	Upgrade 0.68 miles of NFSR 534 E 2 (Lone Cone E 2) from ML1 stored road to ML2, Open to All Motor Vehicles.
534F	Lone Cone F	Upgrade 1.05 miles of NFSR 534 F (Lone Cone F) from ML1 stored road to ML2, Open to All Motor Vehicles.
564D	Divide D	Decommission 0.28 miles of NFSR 564 D (Divide D).
616A	Middle Peak A	Change NFSR 616 A (Middle Peak A), which is currently designated ML2, Open to All Motor Vehicles, to a road closed to public motor vehicle use and managed as a stored ML1 road.
727E	Willow Divide E	Change 0.18 miles of NFSR 727 E (Willow Divide E) from ML1 to ML2, Open to All Motor Vehicles.
578B	Tin Can Basin	Maintain 0.12 miles of NFSR 578 B (Tin Can Basin) as ML2 (at intersection with NFSR 578 (Hermosa Park/Barlow)). Convert 0.62 miles of NFSR 578 B (Tin Can Basin) to single-track trail. .
578B1	Tin Can Basin Spur	Convert 0.82 miles of ML2 NFSR 578 B 1 (Tin Can Basin Spur) to a trail designated for single track motorized use Decommission 0.68 miles of ML2 and 0.65 miles of ML1

Road #	Road Name	Changes that would occur under Alternatives B, C, D or E
new		Add a spur road (to be named Groundhog Point Spur) off of NFSR 403 (Groundhog Point) this would be 0.11 miles of ML2, Open to All Motor Vehicles.
new		Add a new ML2 spur road, 0.05 miles long, for administrative access to the Dunton Guard Station. (This gravel driveway is not currently in the database.) to be named 611B
new		Add unauthorized (user-created) routes as NFS roads; one of these routes is to be named NFSR 687 A (Stoner Dispersed A), with a length of 0.13 miles.
new		Add a new road spur to be named Johnny Bull Trailhead A for ML2-Admin access to the powerline (0.33 miles).
new		Add 0.10 miles of unauthorized road to system as an ML3 to be named 206 (Trestle) and .09 miles of unauthorized road to ML3 to be named Trestle A.
new		Add spur road to be named NFSR 732 Willow Divided Trailhead
new		Add spur road to be named NFSR 535B-West Dolores B

ML1 Roads to be decommissioned

ML1 Road Number	Road Name	Miles
306	Wasp 6	0.74
345	Wasp 10	0.61
367	Wasp 12	0.17
424	Lizard Head	0.27
424	Lizard Head	0.27
496	Barlow	1.39
496	Barlow	1.39
536	Center Drive	6.39
201.A	Pipe Creek A	0.21

ML1 Road Number	Road Name	Miles
202.A	Siphon Springs A	1.08
202.B	Siphon Springs B	1.46
208.A	Rio Lado A	1.28
208.A1	Rio Lado A1	0.58
208.C	Rio Lado C	1.93
208.D	Rio Lado D	0.74
210.A	Fox Den A	0.66
210.B	Fox Den B	1.66
210.B1	Fox Den B1	0.8
248.D	General Taylor D	0.51

ML1 Road Number	Road Name	Miles
305.B	Clear Fish B	0.6
358.B	Grindstone B	0.43
419.A	Taylor Rim A	0.63
419.B	Taylor Rim B	0.93
424.A	Lizard Head A	1.45
424.A	Lizard Head A	1.45
436.A1	Hillside Drive A1	0.84
496.A	Barlow A	0.98
496.A	Barlow A	0.98
534.A	Lone Cone A	0.38
534.J1	Lone Cone J 1	0.43
545 E3	Taylor Creek E 1	0..71
545 F	Taylor Creek F	0.85
545.D	Taylor Creek D	0.74
545.F	Taylor Creek F	0.4
547.A	Taylor Mesa A	1.00
547.G	Taylor Mesa G	0.58
547.H	Taylor Mesa H	0.43

ML1 Road Number	Road Name	Miles
547.I	Taylor Mesa I	0.69
592.A1	Shoas Park A 1	0.64
692.A1	Pothole A1	0.35
692.A2	Pothole A2	0.37
727.B	Willow Divide B	0.67
727.F	Willow Divide F	0.98

ML2 Roads or Road Segments to Decommission

ML2 Road Number	Road Name	Miles to be Decommissioned
404 (portion)	Black Mesa Spur	0.62
201 (portion)	Pipe Creek	1.14
208 (portion)	Rio Lado	0.86
358 (portion)	Grindstone	0.24
547 (portion)	Taylor Mesa	0.9
534 E1	Lone Cone E 1	0.41
534.I	Lone Cone I	0.46
534.J1	Lone Cone J 1	0.423
534.K	Lone Cone K	1.28