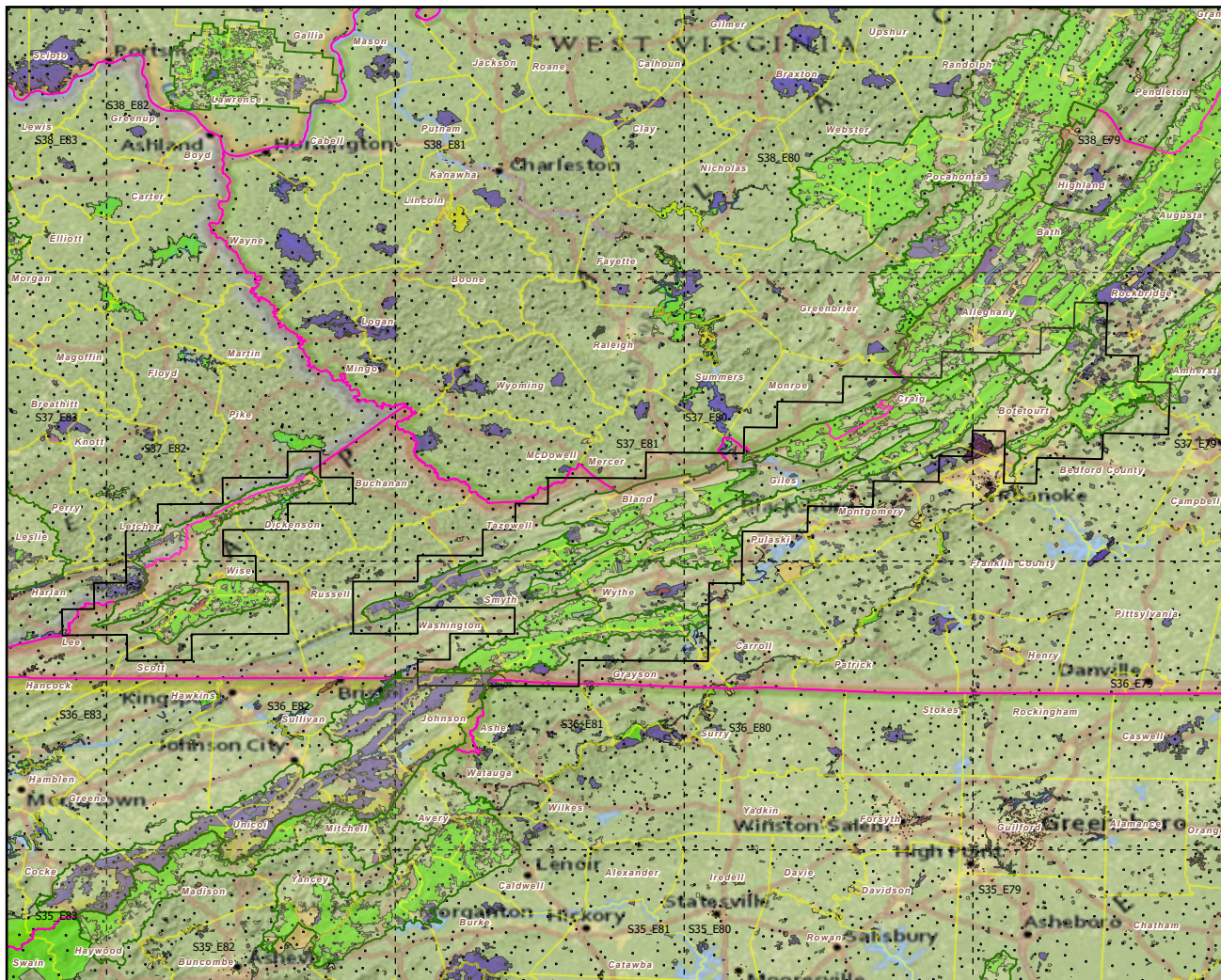


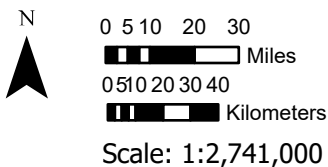
Jefferson NF

Landscape Change Research Group
 Iverson, Prasad, Peters, Matthews
 Northern Institute of Applied Climate Science
 USFS Northern Research Station
 Delaware, Ohio

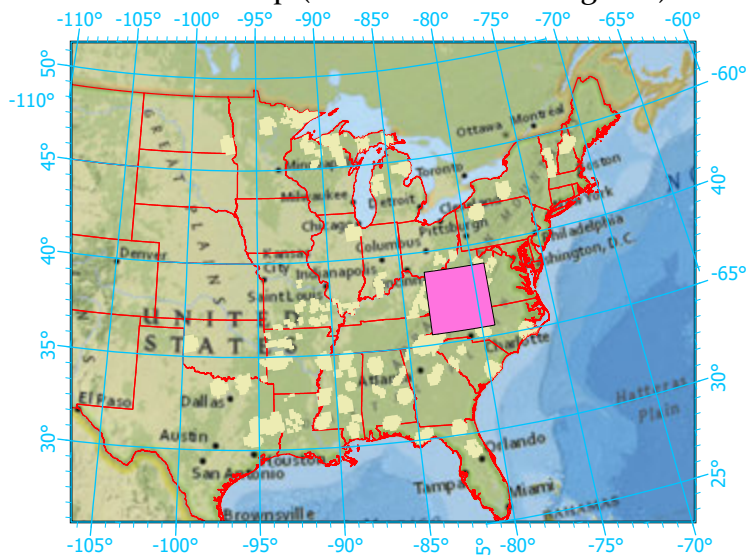
National Forest & Buffers with Protected Areas and Forest Inventory Plots



Center: 81°14'9"W 37°13'54"N
 States: Kentucky; Tennessee; North Carolina; Virginia;



Index map (NF identified in magenta)



- Legend
- National Forest NF Area (sq km)=4927
 - NF Buffers Buffer Area (sq km)=15100
 - State Boundary Percent NF =33%
 - Forest Inventory Plots FIA Count: 481 plots
 - Counties
 - 1x1 Degree Grid

Protected Areas

- American Indian Lands
- Federal
- Joint
- Local Government
- Non-Governmental Organization
- Private
- Regional Agency Special District
- State
- Unknown

Note: This map page is intended to accompany the forest summary tables, based on the inventory plots shown. Tables are located at <https://www.fs.fed.us/nrs/atlas/combined/resources/summaries/NatFor/>.