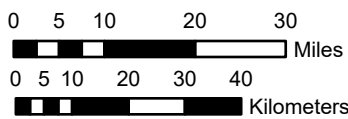
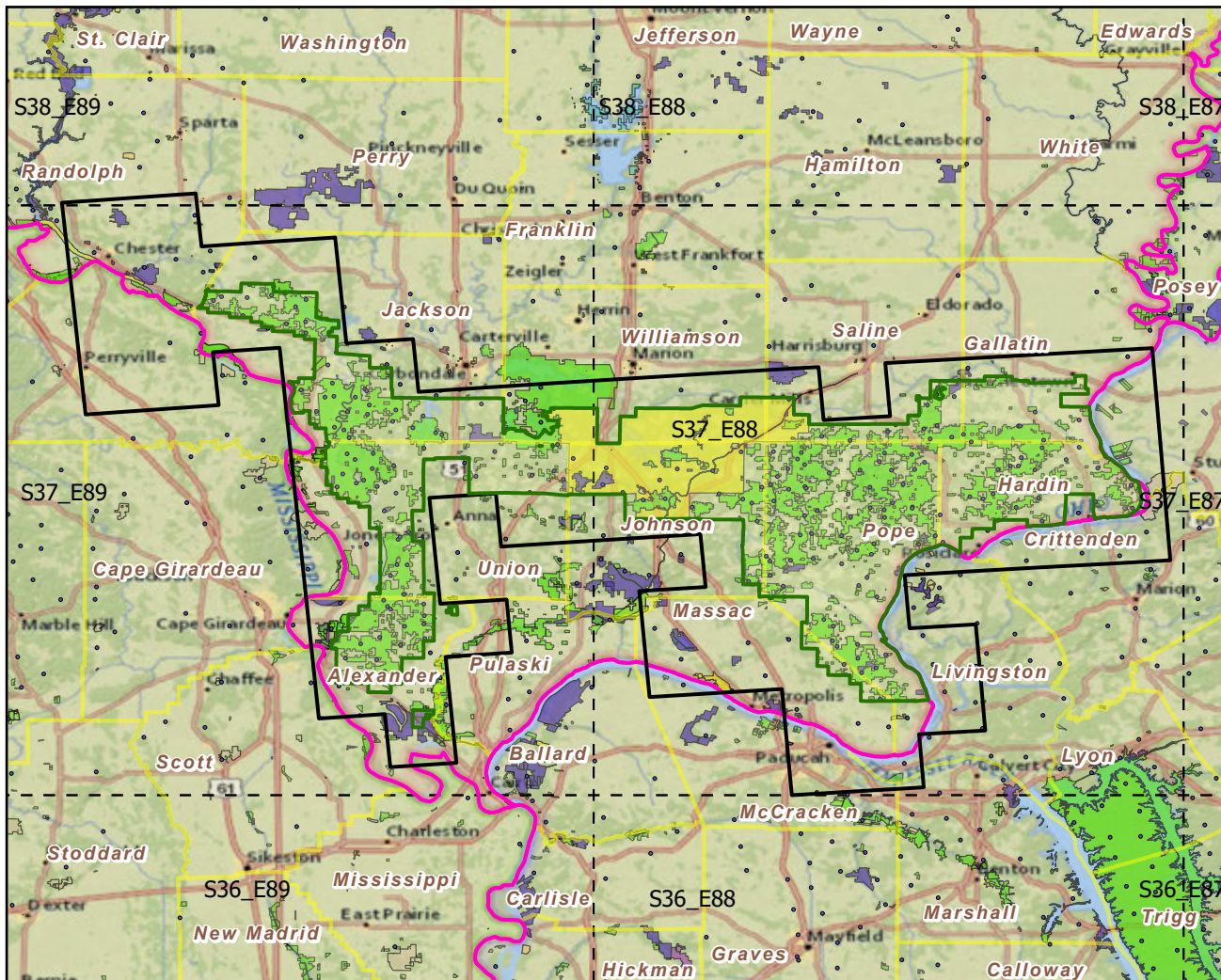


Shawnee NF

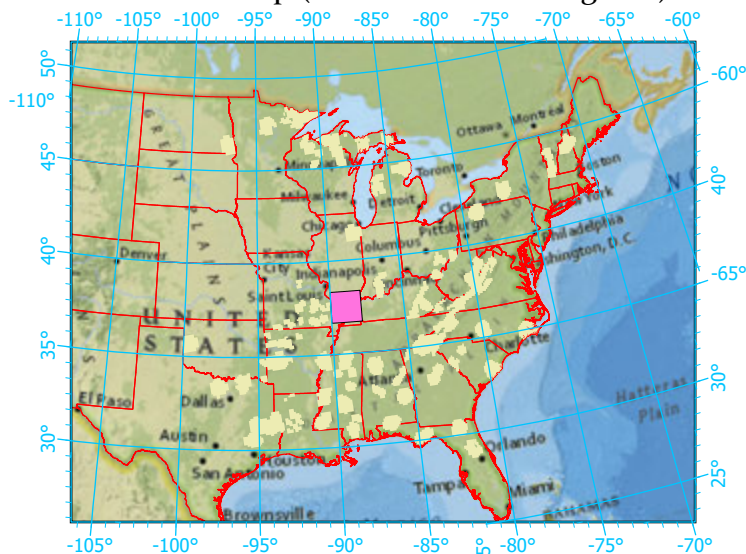
Landscape Change Research Group
 Iverson, Prasad, Peters, Matthews
 Northern Institute of Applied Climate Science
 USFS Northern Research Station
 Delaware, Ohio

National Forest & Buffers with Protected Areas and Forest Inventory Plots



Scale: 1:1,342,000

Index map (NF identified in magenta)



Center: 88°57'44"W 37°30'36"N
 States: Missouri; Kentucky; Illinois

Legend

- National Forest NF Area (sq km)=3501
- NF Buffers Buffer Area (sq km)=8000
- State Boundary Percent NF =44%
- Forest Inventory Plots FIA Count: 266 plots
- Counties
- 1x1 Degree Grid
- Protected Areas**
- American Indian Lands
- Federal
- Joint
- Local Government
- Non-Governmental Organization
- Private
- Regional Agency Special District
- State
- Unknown

Note: This map page is intended to accompany the forest summary tables, based on the inventory plots shown. Tables are located at <https://www.fs.fed.us/nrs/atlas/combined/resources/summaries/NatFor/>.