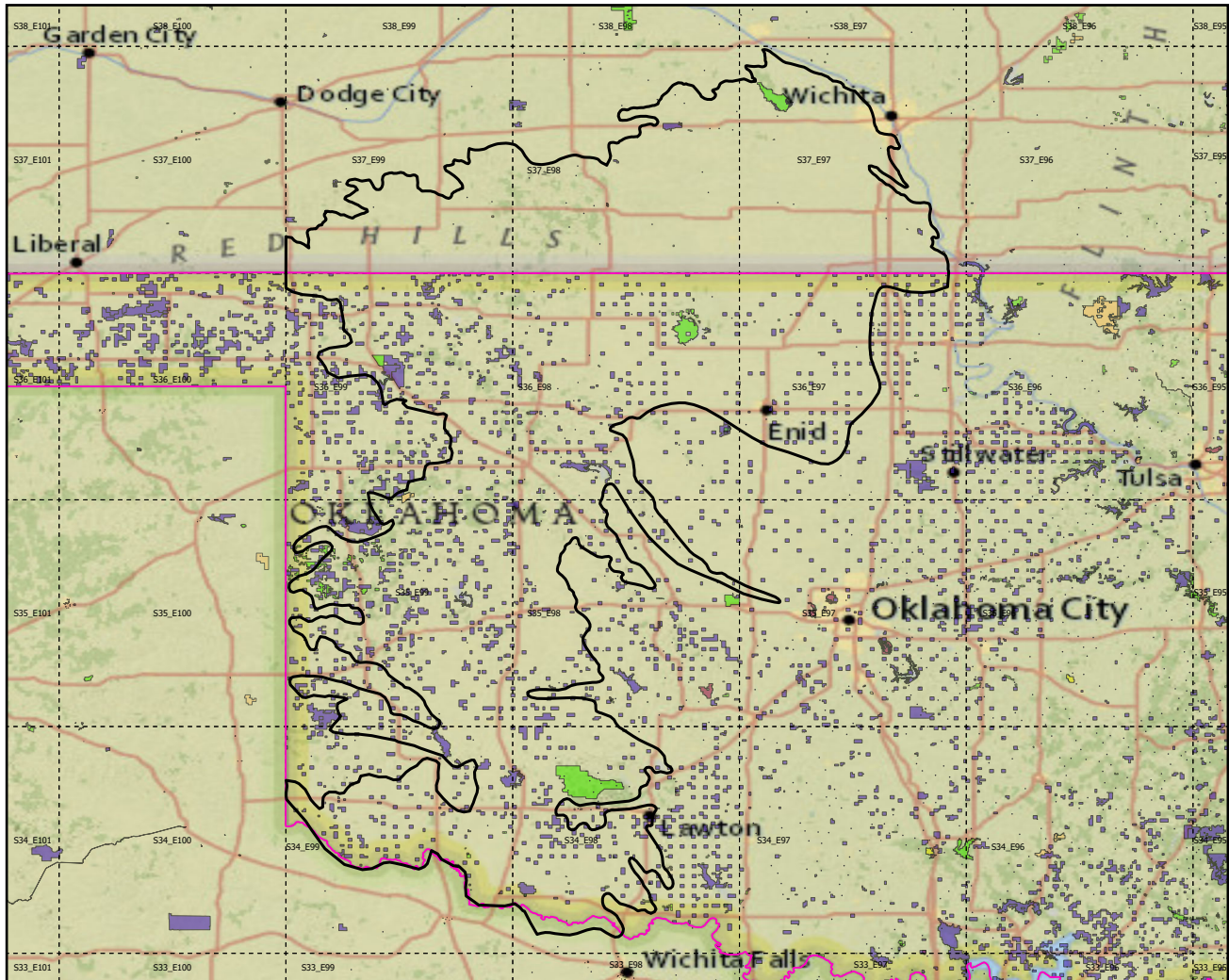
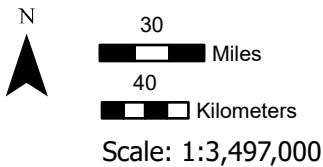


Ecoregions with Protected Areas and Forest Inventory Plots



Center: 98°32'20"W 36°1'42"N  
States: Kansas; Oklahoma; Texas



Ecoregion-Section Boundary

State Boundary

Forest Inventory Plots

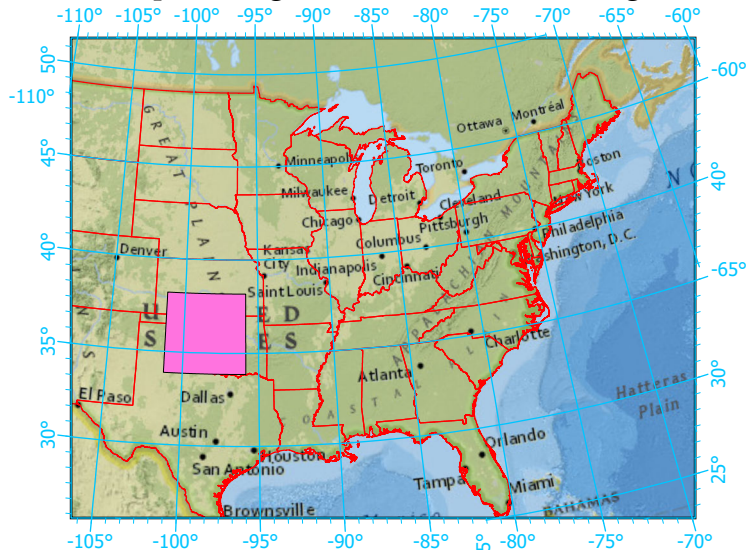
Counties

1x1 Degree Grid

Protected Areas

- American Indian Lands
- Federal
- Joint
- Local Government
- Non-Governmental Organization
- Private
- Regional Agency Special District
- State
- Unknown

Index map (Ecoregion area identified in magenta)



Note: This map page is intended to accompany the forest summary tables, based on the inventory plots shown (approximately). Tables are located at <https://www.fs.fed.us/nrs/atlas/combined/resources/summaries/ecomap/>. Based on the US Forest Service Ecoregional Sections, 2007.