

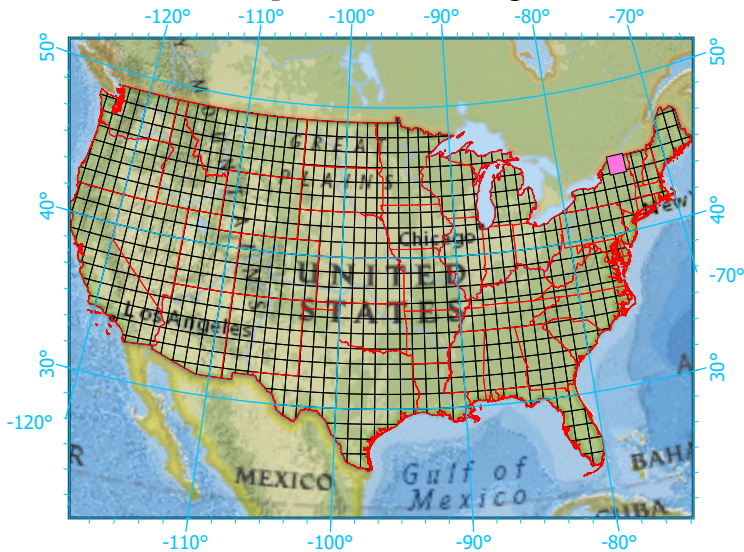
National Geographic, Esri, Garmin, HERE, UNEP-WCMC, USGS, NASA, ESA, METI, NRCAN, GEBCO, NOAA, increment P Corp.

Center: 74°30'W 44°30'N

States: New York



Index map (selected in magenta)



1x1 Degree Grid

- 1x1 Degree Grid
- State Boundary
- USA Counties

Protected Areas 4,398.6 km² area (50.04%)

- American Indian Lands 53.6
- Federal 24.9
- Joint 0.0
- Local Government 18.2
- Non-Governmental Organization 320.9
- Private 0.0
- Regional Agency Special District 0.3
- State 3,980.8
- Unknown 0.0