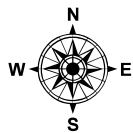
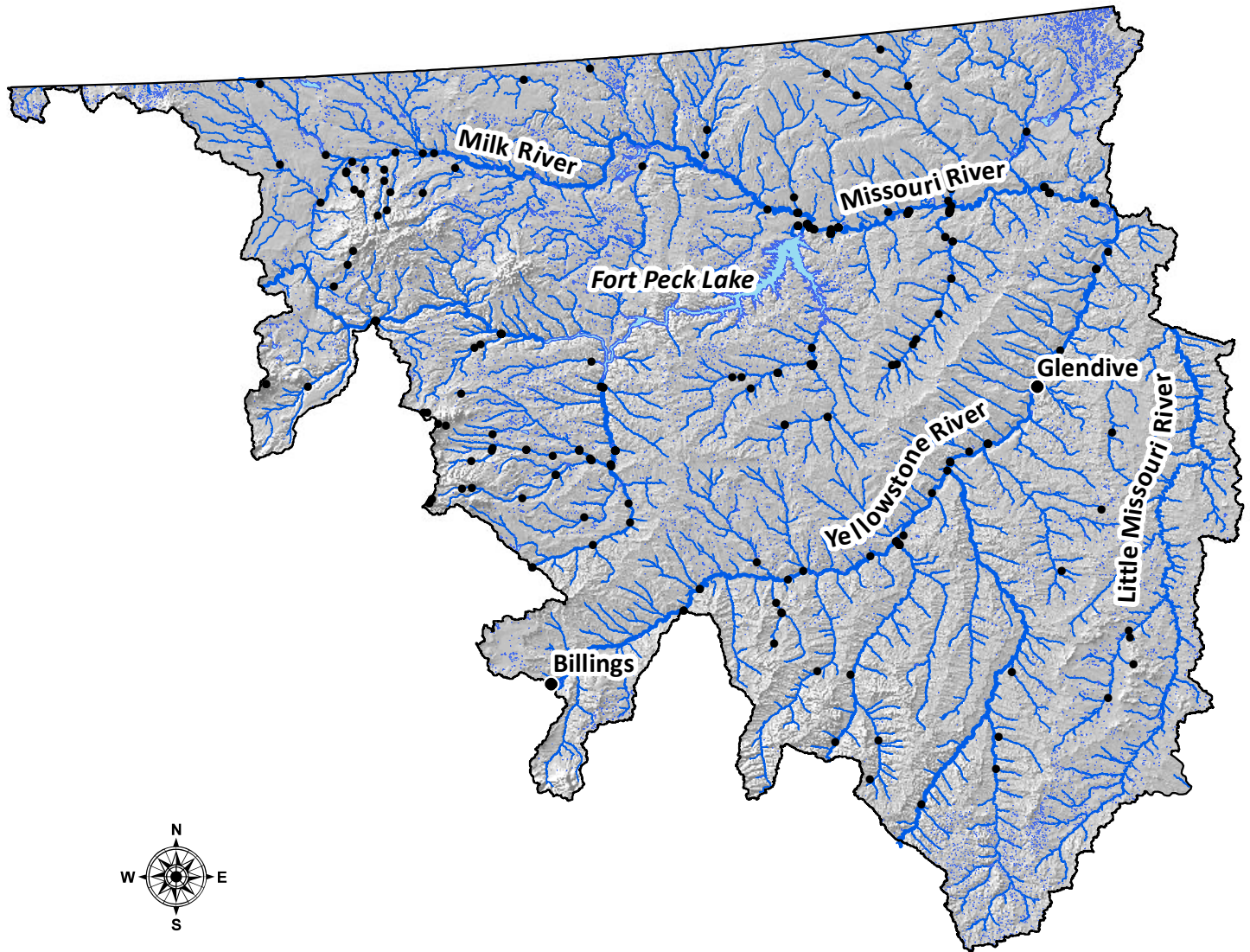


NorWeST Stream Temperature

Observed Stream Temperature Locations

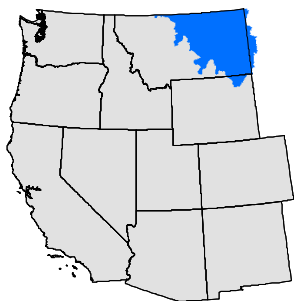
Eastern Montana

Modeling extent covers HUC 8 basins in portions of eastern Montana. Includes all NHDPlus perennial and intermittent flowlines.



100

km



● = Sensor location

272 Sensor deployments

NorWeST
Stream Temp



<https://www.fs.fed.us/rm/boise/AWAE/projects/NorWeST.html>