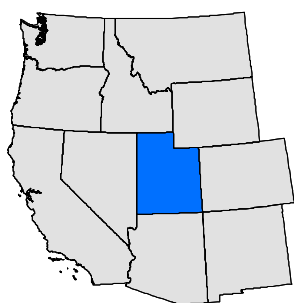
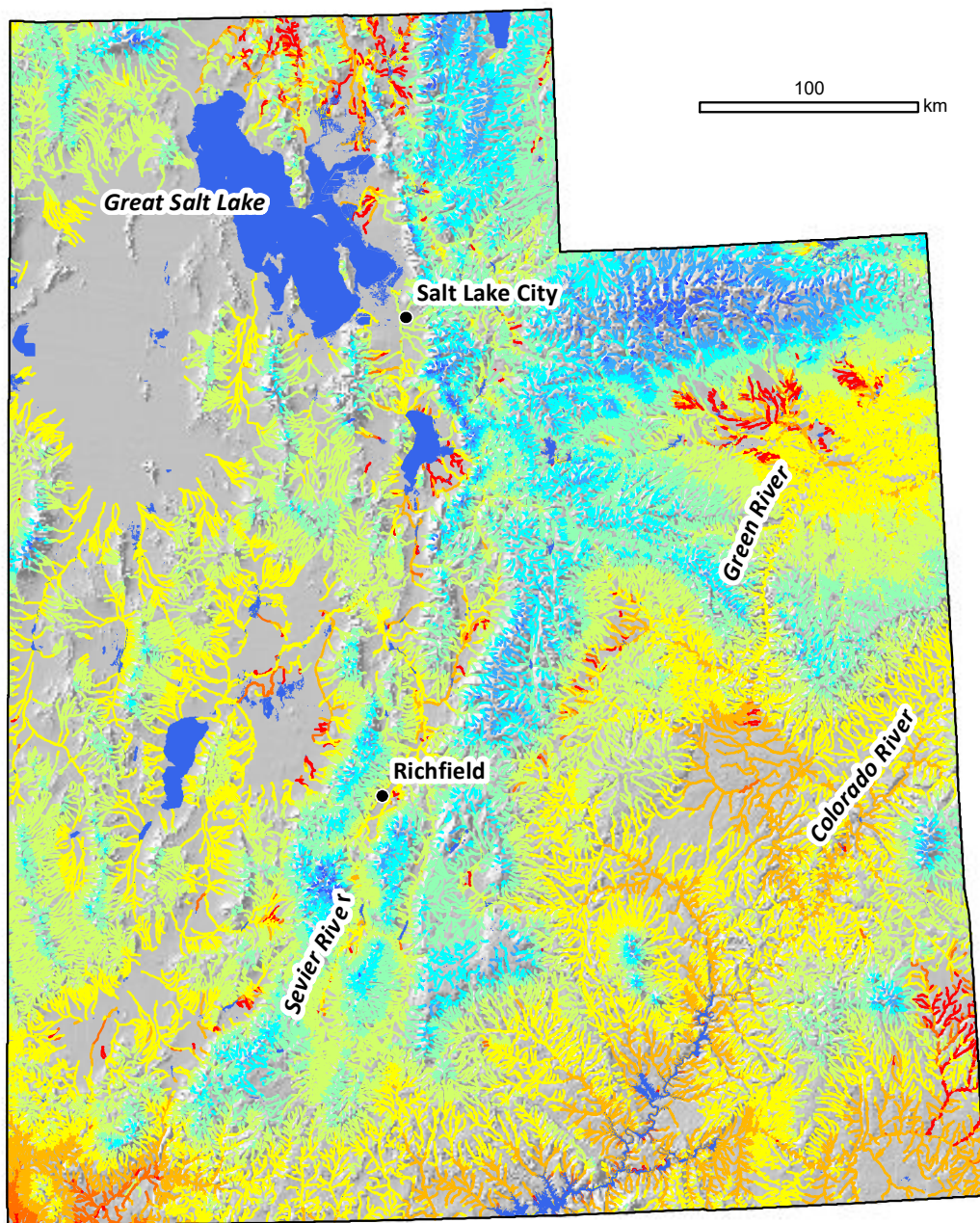


# NorWeST Stream Temperature

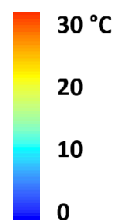
*June Modeled Mean Stream Temperature  
2080s A1B Prediction*

## Utah

Modeling extent covers the Utah state political boundary. Includes all NHDPlus perennial and intermittent flowlines.



Scenario 32:  
Mean June  
Stream Temperature  
2080s A1B Prediction



**NorWeST**  
Stream Temp



<https://www.fs.usda.gov/rm/boise/AWAE/projects/NorWeST.html>