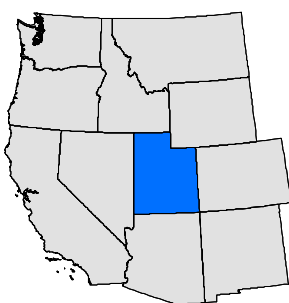
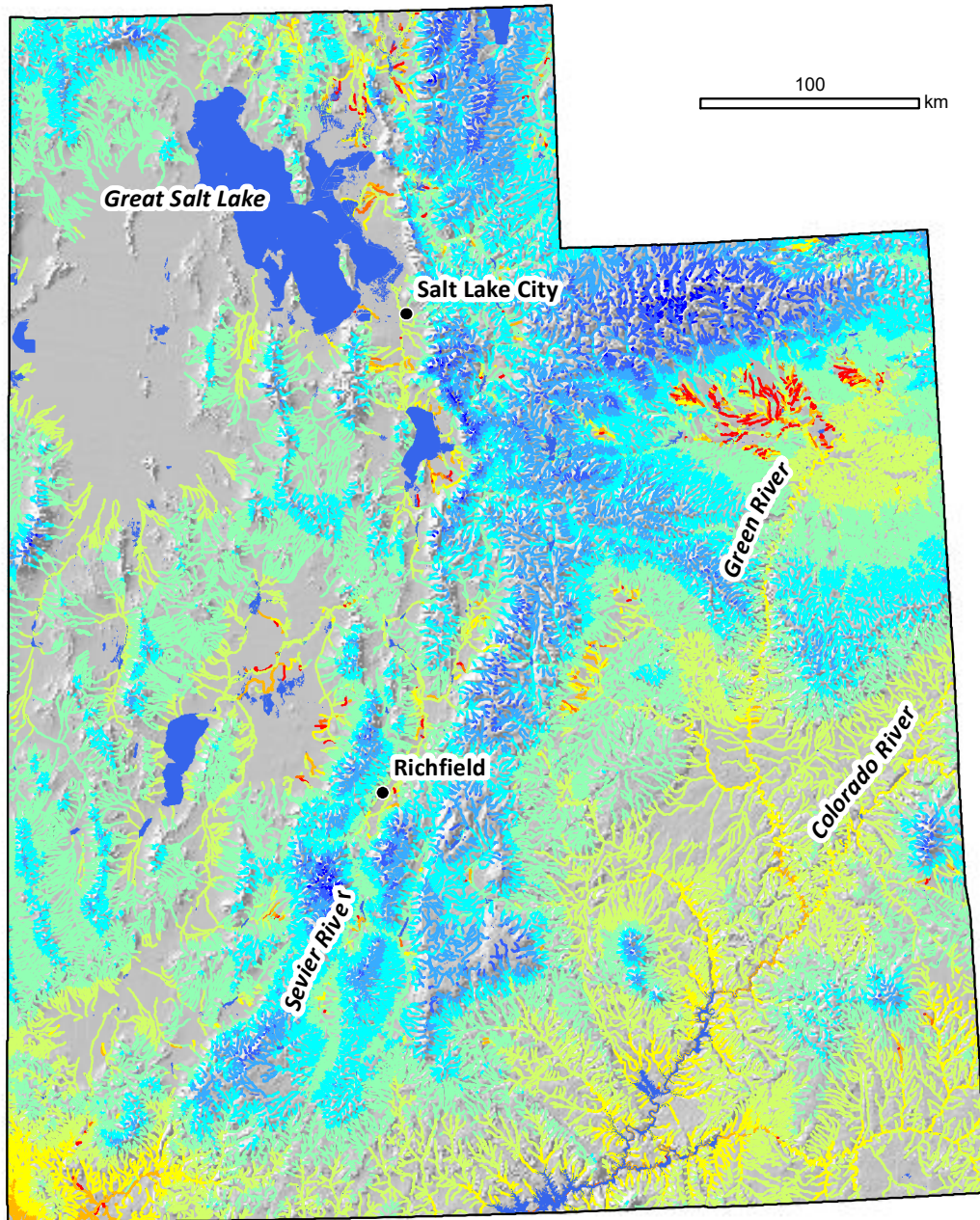


NorWeST Stream Temperature

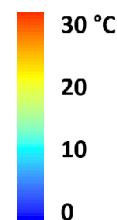
*September Modeled Mean Stream Temperature
1993 -2011*

Utah

Modeling extent covers the Utah state political boundary. Includes all NHDPlus perennial and intermittent flowlines.



**Scenario 1:
Mean September
Stream Temperature
1993 - 2011**



NorWeST
Stream Temp



<https://www.fs.usda.gov/rm/boise/AWAE/projects/NorWeST.html>