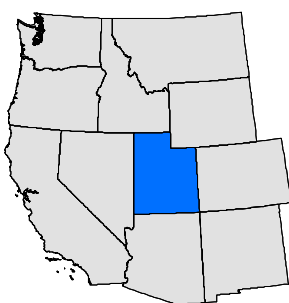
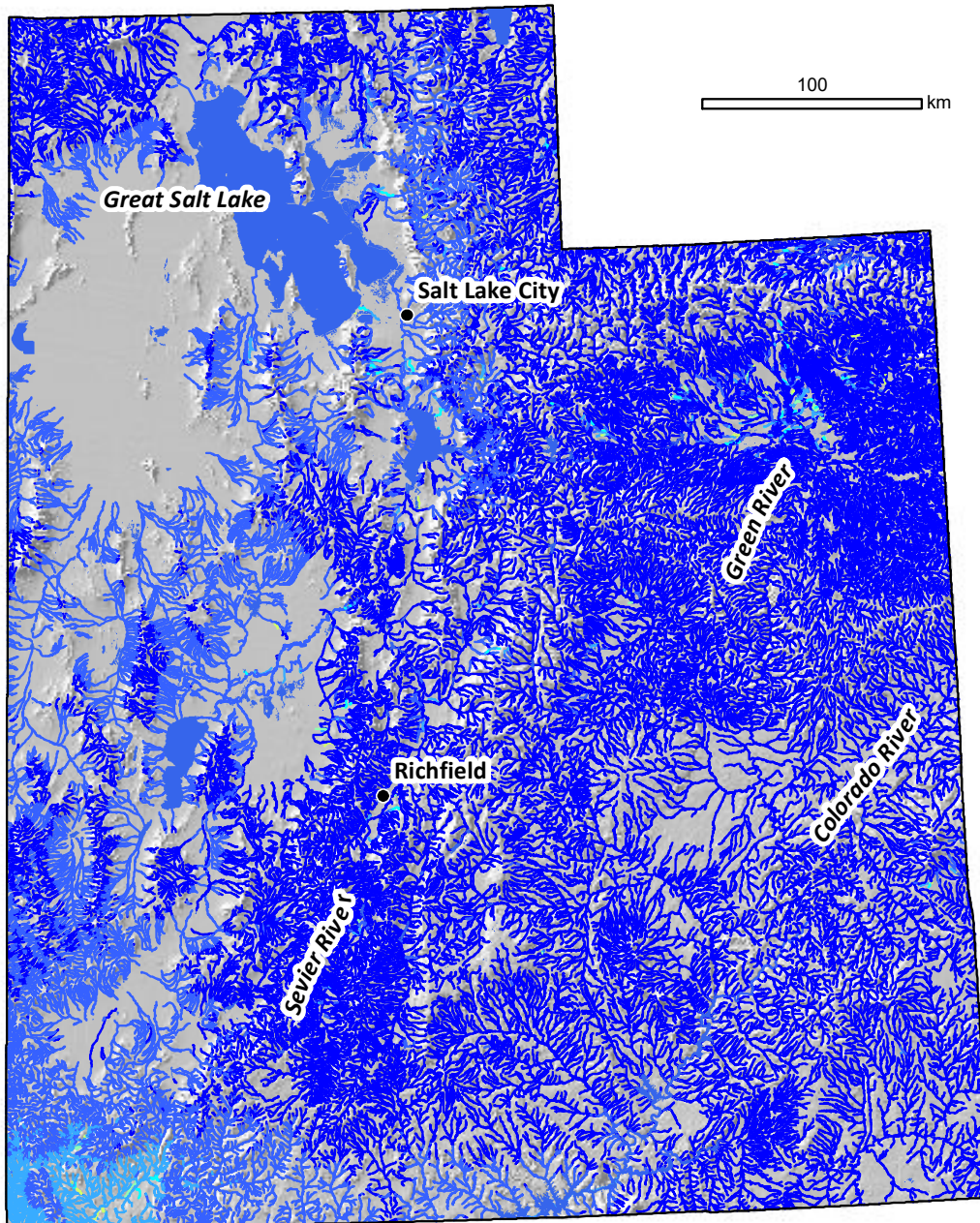


# NorWeST Stream Temperature

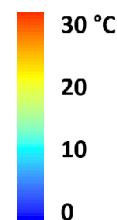
*December Modeled Mean Stream Temperature  
1993 -2011*

## Utah

Modeling extent covers the Utah state political boundary. Includes all NHDPlus perennial and intermittent flowlines.



**Scenario 1:  
Mean December  
Stream Temperature  
1993 - 2011**



**NorWeST**  
Stream Temp



<https://www.fs.fed.us/rm/boise/AWAE/projects/NorWeST.html>