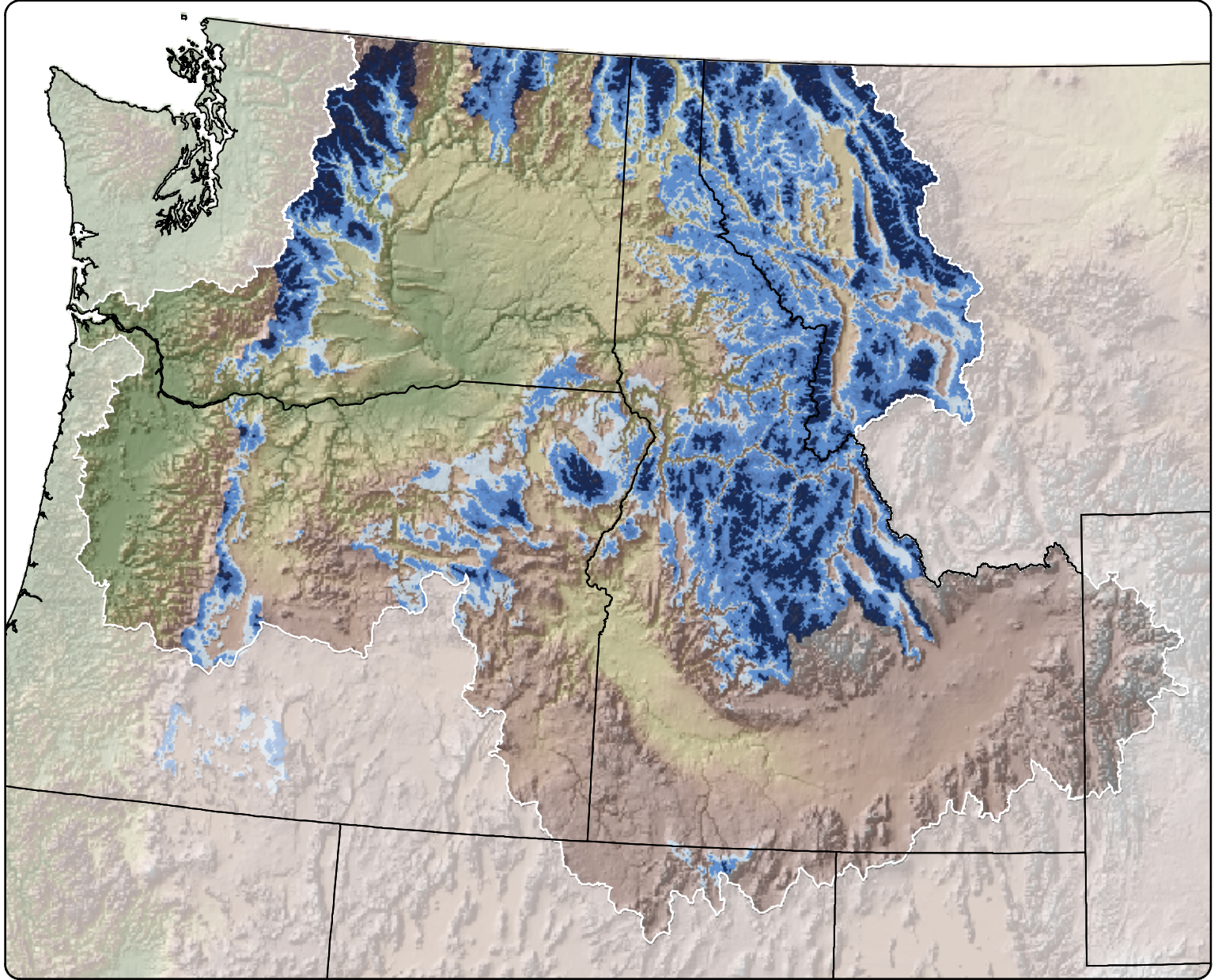
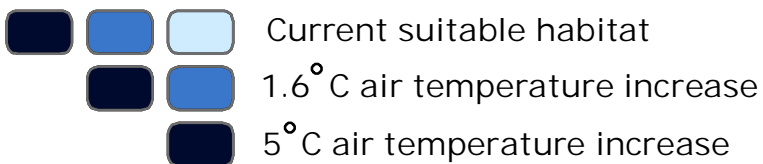


Thermally Suitable Natal Stream Habitat for Bull Trout: Current and Projected Climate Conditions

Columbia River Basin



Thermally Suitable Habitat



Bull Trout Habitat Mapping

This map depicts a loss of suitable natal stream habitat for bull trout in the Columbia River basin, based on a predicted warming trend. Stream temperature habitat distributions are modeled using mean annual air temperature, elevation, latitude, and longitude. Future habitat predictions are governed by estimated increases in mean annual air temperature. On this map, current habitat is represented by all composite shades of blue, whereas estimated future habitat is depicted by successively darker regions.