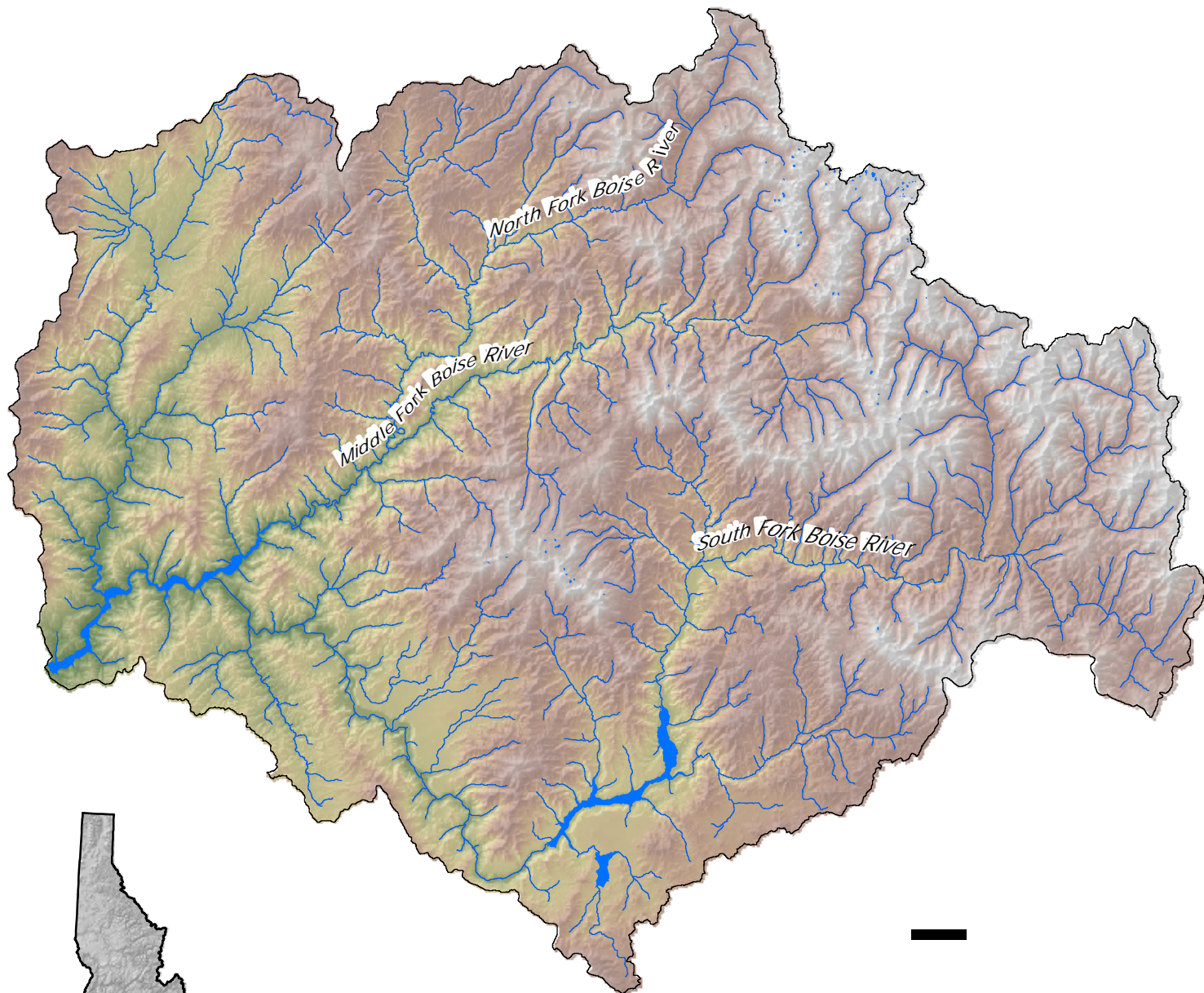
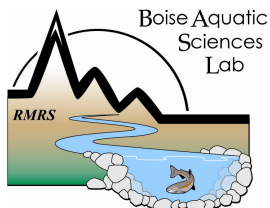


Upper Boise River Basin - Study Area Extent

Central Idaho



Idaho and Study Area



U.S. Forest Service, RMRS
Boise Aquatic Sciences Lab
322 E. Front Street, Suite 401
Boise, ID 83702

0 25 Kilometers

Boise River Basin Study Area

The study was conducted in the upper Boise River basin of central Idaho. The Boise River basin covers 6,900 sq. kilometers and is drained by approximately 2,500 km of fish-bearing streams that range in elevation from 900 m to 2,500 m.