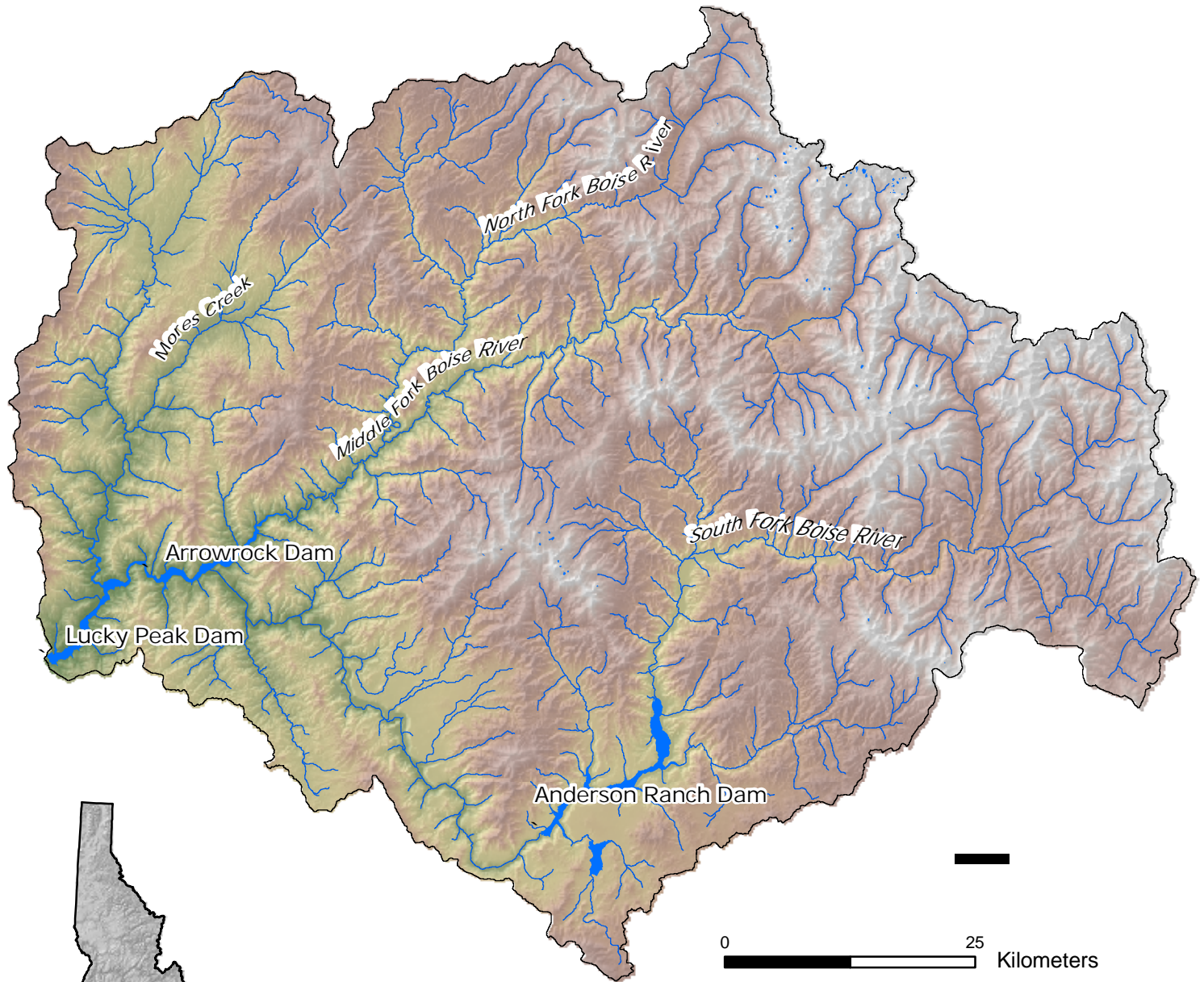
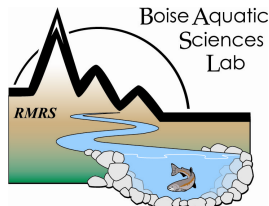


Upper Boise River Basin - Dams and Reservoirs

Central Idaho



Idaho and Study Area



U.S. Forest Service, RMRS
Boise Aquatic Sciences Lab
322 E. Front Street, Suite 401
Boise, ID 83702

Boise River Basin - Dams and Reservoirs

The study was conducted in the upper Boise River basin of central Idaho, which is composed of four major subbasins, the Middle Fork, North Fork, South Fork and Mores Creek. Two dams have isolated large portions of the stream network from one another. Arrowrock Dam was constructed in 1915, and Anderson Ranch Dam was completed in 1950.