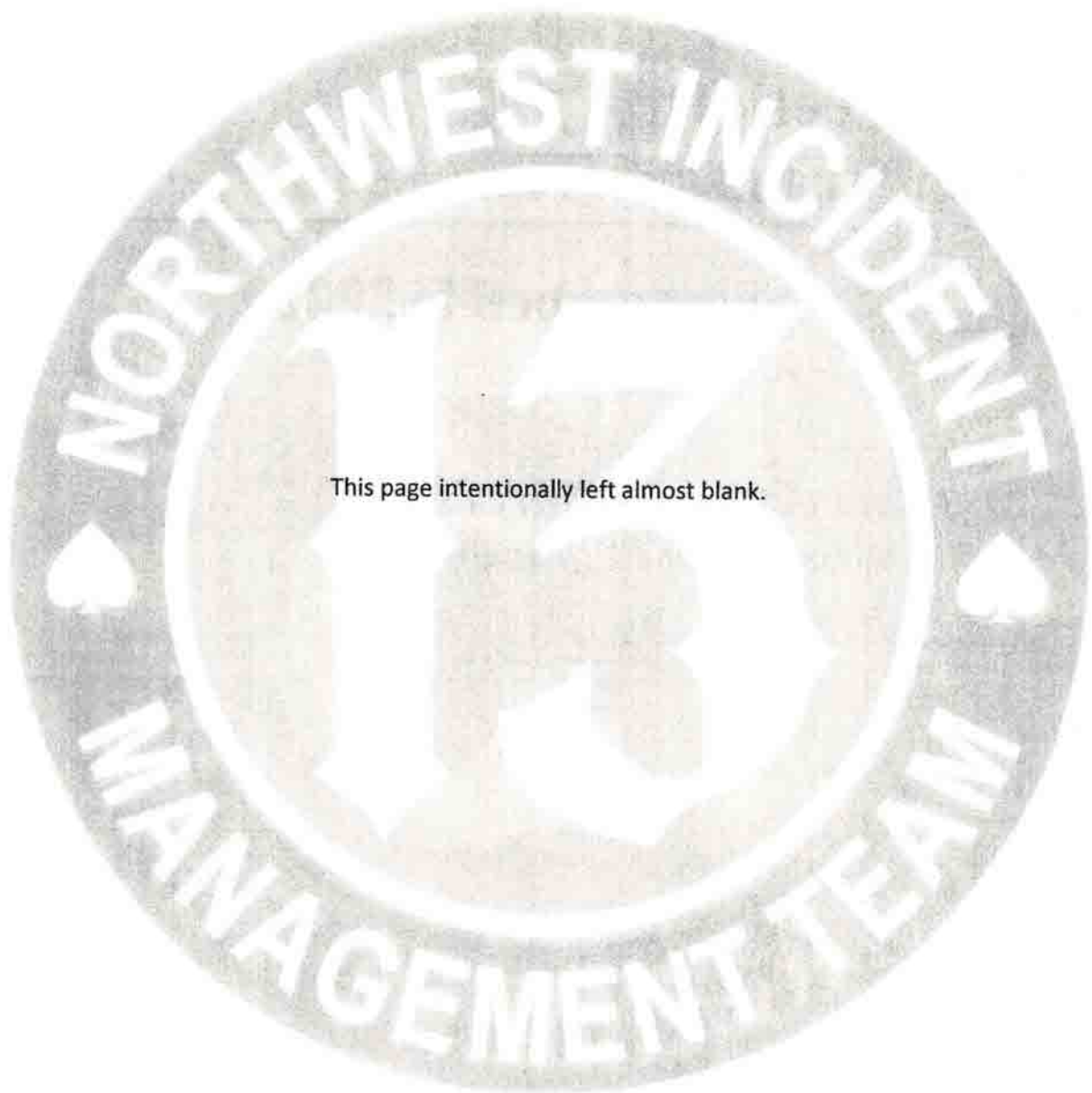


OR-WIF-200299
Beachie Creek Fire
Incident Transition Plan

September 15, 2020

*NWIMT#13 Brian Gales Type #2 IMT to
SW Team 2 (Pierson) Type 1 Organization*



This page intentionally left almost blank.

Contents

| | | |
|------|--|----|
| I. | Plan Purpose..... | 1 |
| II. | Plan Approvals..... | 1 |
| A. | Agency Administrator(s) or Area Commander..... | 1 |
| B. | Outgoing Incident Management Team | 1 |
| C. | Incoming Incident Management Team | 1 |
| III. | Incident Objectives Prior to Transfer | 2 |
| IV. | Transition Schedule and Coordination..... | 3 |
| V. | Organizational Needs | 3 |
| VI. | Functional Highlights | 4 |
| A. | Command | 4 |
| 1. | Incident Commander..... | 4 |
| 2. | Liaison..... | 5 |
| 3. | Information | 6 |
| 4. | Safety..... | 7 |
| B. | Operations..... | 7 |
| C. | Air Operations | 9 |
| D. | Planning..... | 9 |
| 1. | Situation Unit | 9 |
| 2. | Resources Unit..... | 13 |
| 3. | Demobilization Unit..... | 13 |
| 4. | Documentation Unit..... | 13 |
| 5. | Computer Specialist | 14 |
| E. | Logistics | 15 |
| 1. | Facilities..... | 15 |
| 2. | Food Unit..... | 15 |
| 3. | Ground Support..... | 16 |
| 4. | Supply Unit | 18 |
| 5. | Security..... | 18 |
| 6. | Communications Unit..... | 19 |
| 7. | Medical Unit | 21 |


| | | |
|-------|--|----|
| F. | Finance | 21 |
| 1. | Cost Unit..... | 21 |
| 2. | Time Unit..... | 22 |
| 3. | Compensation for Claims | 23 |
| 4. | Procurement Unit..... | 23 |
| VII. | Incident Resources Remaining | 24 |
| A. | Command | 24 |
| B. | Operations (Ground) | 25 |
| C. | Operations (Aviation) | 25 |
| 1. | Aircraft..... | 25 |
| D. | Planning..... | 25 |
| E. | Finance | 25 |
| F. | Logistics (Personnel)..... | 26 |
| G. | Logistics (Equipment & Supplies) | 26 |
| VIII. | NWIMT#13 Type 1 IMT Contact Information..... | 27 |
| IX. | Agency and Cooperator Contacts..... | 28 |
| X. | IAP & ICS 209 Mailing List..... | 28 |

I. Plan Purpose


This Transition Plan will guide the orderly transfer of command on this incident. This Plan, along with the ICS 209 - Incident Status Summary, applicable maps, resource and demobilization information, and authorizing delegation(s) of authority, adequately summarize the status of the incident sufficient for transfer of command.

II. Plan Approvals


A. Agency Administrator(s) or Area Commander

| Agency or Area Command | Agency Administrator Signature | Date |
|---|--|---|
| Dave Warnack Willamette National Forest |  |  |
| Duane Bishop Willamette National Forest |  | 09/15/2020 |
| John Huston NW Oregon FO BLM |  | 9/15/20 |
| Steve Wilson ODF |  |  |
| Mike Shaw ODF |  | 9-15-20 |
| Joe Stutler Area Command |  | |
| Les Hallman OSFM Green Team IC |  | 09-15-20 |

B. Outgoing Incident Management Team

| IMT & IC Name | Incident Commander Signature | Date |
|-------------------------|--|---------|
| Brian Gales NWIMT#13 IC |  | 9/15/20 |

C. Incoming Incident Management Team

| IMT & IC Name | Incident Commander Signature | Date |
|-------------------------|--|-----------|
| John Pierson SWIMT#2 IC |  | 9/15/2020 |

III. Incident Objectives Prior to Transfer

General Control Objectives for the Incident (include alternatives)

- Ensure firefighter and public safety by using strategies and tactics that mitigate known and anticipated hazards while providing for the highest probability of success.
- Be cognizant of COVID-19 procedures.
- Provide accurate and timely fire information through interagency and public coordination.
- Protect cultural values and natural resources in the fire area.

Management Objectives

- Implement suppression actions that have a high probability of success while weighing risk exposure to firefighters and the public.
- Utilize the Risk Management Process to maintain safe and effective operational decisions.
- Ensure minimal impacts to firefighters and communities in respect to COVID-19 safeguards by following the COVID-19 Check Sheet in the IAP.
- Consider fire fighter exposure with respect to communications, driving, aviation and heat exposure in decisions and actions.
- Implement suppression actions in consideration of values at risk to minimize adverse impacts while managing fire suppression costs.
- Maintain and strengthen relationships with partner agencies, local communities and private land owners.
- Support local unit initial attack when requested and feasible.

Commander's Intent

- Safety: Firefighter, public, and aviation safety will be addressed through hazard/exposure risk mitigation processes.
- Communication: We will keep the Agency Administrators informed of significant accomplishments and concerns.
- Risk Management: We will use mindful risk assessment process to mitigate unnecessary risk to firefighters and update, and/or revise decisions, as necessary.
- Human Resources: We will ensure that all incident personnel be treated with dignity and respect. We have a zero tolerance for harassment, alcohol, or illegal drug use.
- Operations: We will make informed tactical decisions engaging the fire in the right locations with the appropriate resources.
- Public Information: We will provide timely and accurate information through the press, meetings, trap lines, briefings, community meetings, and social media.
- Stakeholders: We will coordinate with the local community to enhance key partnerships and keep them effectively informed of progress along with the use of their local knowledge.
- Finance: We will establish and monitor cost effective methods for accomplishing incident objectives.
- Resource Advisors: We will work closely with resource advisors to limit fire impacts to sensitive cultural and environmental areas as well as develop suppression actions in Wilderness Study Areas within guidelines provided by the various jurisdictions.

IV. Transition Schedule and Coordination

- Brian Gales NWIMT#13 Type 2 IMT will transition with SW #2 (Pierson) Type 1 Organization on Wednesday, September 16th and will participate in incident management operations until SW #2 (Pierson) Type 1 Organization assumes command of the incident at 19:00 September 16th, 2020.
- Brian Gales NWIMT#13 Type 2 IMT will develop and produce the Incident Action Plan for the September 15th Operational Period.
- Brian Gales NWIMT#13 Type 2 IMT and SW #2 (Pierson) Type 1 Organization will jointly develop and produce an Incident Action Plan for the September 16th Operational Period.
- Brian Gales NWIMT#13 Type 2 IMT and SW #2 (Pierson) Type 1 Organization will jointly conduct the morning operational briefing on Wednesday, September 16th at the Chemeketa College ICP.

V. Organizational Needs

A partial list of resources to be left with the incoming IMT, by ICS function, is included in **Section VII** of this narrative. The incoming team should continue to coordinate with Eugene Dispatch Center in Eugene OR as well as with Area Command regarding the release and reassignment of resources.

VI. Functional Highlights

A. Command

1. Incident Commander

The Willamette National Forest, Oregon Department of Forestry (ODF) and Northwest Oregon Field Office of Bureau of Land Management are the primary jurisdictional agencies for what became known as the Beachie Creek Fire.

- Transition and delegation on 9/4/20 for the Beachie Fire, which was at approximately 200 acres, sitting in the Opal Creek Wilderness. Fire is in steep inaccessible terrain with limited to no safety zones and large timber and rhododendron fuel component. IA resources (Smoke Jumpers, Hot Shots and Rappelers) assessed fire and determined direct fire line containment was not viable. A National Incident Management Team was brought in to assess fire at its initial state and a T3 IMT worked to build indirect containment lines prior to our arrival.
- The assignment was to assess values at risk within the geographic footprint, determine long-term tactical plan for engagement and utilize indirect suppression tactics. Aviation assets were utilized to check fire growth until smoke conditions from other fires no longer allowed safe flight.
- Significant coordination occurred with local stakeholders and jurisdictions including the Marion County Sheriff plus numerous others identified in the attached Liaison list.
- Ordered operational resources such as crews, fixed wing aircraft and helicopters for management of the Beachie Fire. Worked to establish indirect control features to potentially utilize for perimeter fire containment. This was ongoing from 9/5-9/6.
- ODF provided fuels mitigation for structures in Jawbone Flats.
- On 9/7 due to predicted weather forecast resources were placed in work areas where egress would not be compromised due to down trees. IMET update around 1500 east winds would arrive and they did shortly after this notification. Lionshead Fire notified Operations around 2015 that it was several miles over the crest and heading towards Detroit. Strong winds were felt at ICP at approximately 2030. New ignitions occurred at ICP just before 2200 as a tree limb fell on power line. ICP was quickly surrounded by fire on three flanks with additional fires on hillsides around ICP. The Team worked for approximately an hour to suppress fires in ICP and assist with notification and evacuations for other proximity fires. Initial engagement was not successful on fires outside ICP and decision was made to evacuate ICP due to imminent threat of fire behavior and wind. Nearly all resources safely relocated to Stayton High School by 0046 on 9/8. Several operational resources arrived in Stayton at around 0400 after staying in Gates to communicate with mutual aid resources.
- Local mutual aid took command of new fires along Hwy 22 corridor as Team 13 had evacuated ICP after significant efforts to protect themselves and citizens in the community of Gates.
- The Lionshead Fire likely burned into the Beachie Fire sometime during the night of 9/7 – morning of 9/8.
- Conflagration called at 22:33 for Lionshead Fire and Les Hallman on 9/7. During the evening, the OSFM Team was routed to Beachie Creek in support of numerous new fires along the Highway 22 corridor. The Team was to arrive at Stayton and In-brief with Team 13 at 0700. Four taskforces would join at 0800.
- OSFM Green Team and Team 13 established Unified Command at 0700 on 9/8.
- Located safe ICP at Chemeketa Community College and worked with Reed Godfrey to transfer command structure to OSFM Green Team, all occurring prior to 11:00. Based on fire conditions we made the decision to operate in rescue mode only, cutting access and getting citizens out of the way of the fire front on 9/8. No active fire suppression. Fire size mid-day reported my DRTI at 131,000 acres.
- Fires all had converged into one large footprint with significant growth to the NW on the morning of 9/9, due to the number of resources and fire behavior we continued in rescue mode attempting to provide access to first responders for evacuations in HWY 22 corridor while assisting Riverside with

resources and recommending evacuations based on Fire Behavior and IMET input for further fire growth to the west.

- On 9/10 resources began perimeter control efforts through limited direct attack, by mid-day Riverside Fire notified that two fires had plume dominated cap, FBAN advised all personnel between fires disengage and all other resources stay out of forward spread. As day progress a favorable onshore flow occurred around 1600 that reduced risk of column collapsing do to west wind and resources began to assess control options of fire footprint.
- 9/11 weather moderated, and resources were engaged in fire suppression operations, structure protection, tactical mop up, and clearing access along HWY 22 corridor.
- From 9/11 – 9/14 the Teams worked in Unified Command to provide access to emergency responders, structure protection and work with private landowners to create a control perimeter from Hwy 22 north towards the Molalla River. Similar control was ongoing on the southern perimeter south and along Hwy 22.
- Daily Incident Commander conference calls continue to be hosted by the PNW Multi-Agency Coordination (MAC) group, at 07:30. The number is 888-844-9904, passcode 9552152#.

| Name | Agency | Contact Number |
|--------------|----------------------------|----------------|
| Dave Warnack | Willamette National Forest | (b)(6) |
| Duane Bishop | Willamette National Forest | |
| John Huston | NW Oregon FO BLM | |
| Steve Wilson | ODF | |
| Mike Shaw | ODF | |
| Joe Stutler | Area Command | |
| Les Hallman | OSFM Green Team IC | |

2. Human Resource Specialist:

- This was a difficult fire for the fact we had to evacuate our ICP. That said, the team rallied and came back together strong. It took a few days, but the health of the team stayed strong. The mental attitude was healthy.
- Overall, the personnel assigned to this incident maintained positive attitudes.
- Everyone was social distancing as best as they could, wearing masks, and washing hands.
- There were no medical demobs.
- There are no outstanding personnel issues to report.
- Positive behavior and performance by those on the incident.
- Working with the Oregon Green Team.
- Keeping the ICP COVID free.
- Second assignment in a COVID atmosphere. Wearing masks and social distancing always, was less of a challenge, got better at as the days went on.

3. Liaison

- Team 13's Liaison position was filled by Deputy IC Larry Nickey. Nickey arrived on the fire on 9/3/2020 while the OSFM Green Team Liaison Steve Warden was assigned 9/8/20. Nickey served as Liaison for State and Federal Agency Administrators, Elected Officials and Utility Companies. Warden was assigned as the Liaison for Fire and Law Enforcement agencies. Grady McMahan, LOFR-T, was assigned on Team 13's arrival and assisted Warden with Fire Department liaison work.

Primary issues included working with power companies to help them gain access within evacuation areas where their infrastructure was damaged by either fire or wind. Companies involved included PGE, BPA, Consumer Electric, Pacific Power and Light. NW Natural Gas has a gas pipeline through the area and had worked on inactivating prior to the fire run.

- Primary law enforcement agencies were Marion County Sheriff's Office, Linn County Sheriff's Office, Oregon State Police. Several other departments provided support as the fire grew.
- Primary Fire Departments included the Detroit, Gates, Breitenbush, Lyons, Silverton, Mt Angel, Stayton, Albany, and Sublimity departments.
- The Forest was handling all Congressional inquiries during the team's time on the fire.
- Nickey and McMahan will demob with Team 13.
- See attached list of cooperators and stakeholders.

4. Information

- Recommended staffing of Information Function
 - Call Center: 5 people
 - Trap Line: 6 people (3 pairs)
 - Media Desk: 4 people (with 1 local unit support to assist as needed)
 - Social Media: 2 monitoring and 1 posting
 - PIO liaison with the following PAO agencies: ODF, USFS/Willamette National Forest, Oregon State Fire Marshall's office, Marion County Sheriff, Linn County Sheriff, SORO, ODOT, BLM.
 - Audio Visual 2 (1 to film and 1 to edit)
 - 1 office manager
 - 1 Inciweb update
 - 1 update writer
 - 1 email responder
 - 1 doc box media/info, and 2 office support (local unit support).
- Information center locations
 - Chemeketa Community College
4000 Lancaster Dr. Salem, Oregon 97305 Bldg. 5
- Recommended tasks
 - Local Unit Support can assist in call center and trap line
 - Public Meetings
 - Media Briefings
 - Initiate Trap line to include boards at Division locations, Red Cross Shelters etc...
 - Refer to Trap Line List
- Political considerations
 - Politicians are interested in the dynamics of this fire as it is in proximity to large population centers. We have had at ICP Local, State and Federal politicians.
 - Local Militias are in the fire line.
 - Homes destroyed and businesses lost.
 - Access of population back to their property.
- Relationships with local agencies and news outlets (print and electronic).
 - Coordination with local agencies is of primary importance. Designating a PIO Liaison with all agencies is recommended. Currently, the relationship with agencies are strong.
 - ODF, BLM, USFS/Willamette National Forest, ODOT, SORO, Oregon State Fire Marshall's Office, Marion County Sheriff, Linn County Sheriff
 - Integrated with the Oregon State Fire Marshal's office PIO's

- OSFM working on political considerations and media
 - OSFM responsible for structural and political concerns
- Trends
 - This fire began in the Opal Creek Wilderness with minimal public interest. After the wind event on 09/07/2020 when new starts moved into populated areas the trend of interest increased.
 - National media began making contact after the wind event.
 - Beginning on 09/11, international media began to show interest
- Daily conference calls
 - 0900 Regional Call with SORO
 - 1030 PIO/PAO Call with local forest and Lionshead Fire
 - Contact Shannon O'Brien Lionshead Fire (b)(6)

5. Safety

- We continually speak to the added risk caused by transitions. This is a known factor that increases risk and should be considered.
- No serious accidents or injuries have occurred on this incident.
- **COVID 19 Screening:** Everyone needs a temperature check done daily. Each crew, engine or overhead can then issue a color wrist band.
- **Driving:** Heavy dense smoke makes driving dangerous. Sight distance is severely reduced on all roads. There is a lot of interaction with the public in all divisions, even within closed areas. Roads accessing the fire perimeter have developed ruts, wash boards, potholes, and excessive dust to limit visibility. A lot of these roads are old logging or two track roads.
- **Heat Related Illness and Dehydration:** This issue has been being address through the safety message in the IAP and the Deliberate Risk Assessment (DRA). This continue to be an issue for the remainder of this incident.
- **Personal Hygiene:** In the COVID environment, wearing mask, washing hands and social distancing will need to be enforced. This is of high importance to prevent the spread of Covid and the camp crud.

B. Operations

- Indirect approach to control lines was utilized based on recommendation by Type 3/NIMO Team after direct approach was turned down by smokejumpers, rappellers, and hotshot crew.
- Established ICP at the town of Gates. Established spike camps at Shady Cove and Fox Group to reduce travel times and for separation to mitigate for COVID-19.
- Extensive communication with local unit with a reliance on local resources.
- Cooperated with ODF to mitigate hazardous fuels and construct hose lay and sprinkler system in the community at Jawbone Flats.
- Structure Protection Group assessed structures in the communities of Gates, Mills City, Lyons to the west and Detroit to the east. Contact was established with local fire agencies and existing structure protection plans were reviewed with the Fire Chiefs.
- PACE Model was developed along with management action points.
- Trigger points were established to respond to forecasted east wind event.
- Pulled resources off the control lines and moved them back to ICP as fire area became unsafe due to high winds.
- High winds and fallen trees created multiple starts in ICP and the Gates Community. IMT personnel engaged in the firefight around camp.

- Due to multiple fire starts in and around ICP the order to evacuate to Mill City was given.
- Due to Mill City being threatened by new starts order was given to evacuate to Stayton.
- Due to Stayton being threatened order was given to evacuate to Salem.
- With loss of ICP and team equipment, Team 13 voted to re-establish a new ICP at Chemeketa Community College and re-engage the fire.
- Established joint operations with Oregon Fire Marshalls Office and their Task Forces.
- Cooperative efforts to share heavy equipment were developed with ODF.
- Opening and maintaining travel infrastructure was priority for first two days after wind event subsided.
- Established Divisions A,F,H,K,W, and Z and developed PACE model for western flank of fire.
- Due to forecasted east wind event, the fire increased in size from approximately 500 acres to 132,000 in two days. All IMT personnel were safely evacuated from Gates Fire Camp as multiple ignitions took place in the communities west along the Highway 22 corridor.
- Local personnel in operations. Having local knowledge improved our overall planning process.
- The firefighting efforts of logistics, plans, finance, and operations folks to control fire around and in ICP.
- Evacuated over 300 people from ICP during high wind event through multiple fire starts, downed power lines, and falling trees without any injuries.
- The resiliency of Team 13 to have loss of personal items, their working equipment and still choose to stay and re-engage the fire.
- The resiliency of our Division Supervisors to continue working in an effective and efficient manner, while exposed to the stresses of witnessing loss of life and property. While also working in COVID-19 environment.
- The number of civilians within the fire footprint was tremendous. Cooperation and coordination with them helped to reduce overall risk.
- Communication system went down due to impacts from fire on established repeaters. Cell coverage was utilized to help alleviate this until a repeater could be re-established.
- Lack of available resources, especially mid-level management. A collaborative effort and substantial support from the local unit and cooperators helped to alleviate some critical resource needs.
- Lack of opportunities to use aviation resources due to inversions and thick smoke created operational challenges. Local cooperators with heavy equipment helped to expedite the timeframe for putting in control lines and holding fire within its footprint.
- Poor visibility to, from, and on the fire line for extended durations made travel and working conditions hazardous. Tactical pauses were used to allow time for visibility to improve along with reduced driving speeds.

C. Air Operations

| AIR OPERATIONS SUMMARY 220 | | Prepared By: Nancy Barker | | Prepared: 09/14/2020 | | Prepared Time: 1900 hrs. | | | | | | | |
|---|-----------------------|-------------------------------------|----------------------------|---|--|--|--------|-----|-------------|-------|-------|-------|--------------------------|
| 1. INCIDENT NAME: Beachie Creek | | 2. OPERATIONAL PERIOD 09/15/2020 | | START TIME: 0800 END TIME: 2200 | | Sunrise/Sunset Redmond 0644/1913 Salem 0651/1921 | | | | | | | |
| 3. RISK ASSESSMENT MITIGATIONS, SPECIAL INSTRUCTIONS, and REMARKS: **Ensure visibility and winds are adequate to safely conduct flight operations.** Assess mission complexity and the Benefit/Risk of the mission. Ensure safe vertical & horizontal separation between aircraft in smoky conditions. If you see a UAS on your division report it up the chain of command to Air Operations. It may or may not be a friendly! ***Visibility Limitations 1 mile at Helibase and destination*** | | | | 4. READY ALERT AIRCRAFT Order through Communications See Medical Plan in the IAP Air support for extraction is unavailable due to visibility. Davis Airstrip Helibase: N 44° 44.76 X W 122° 25.28 Howell Prairie Helibase: N 44° 53.57 X W 122° 52.20 Albany Airport N 44° 38.32 X W 123° 03.65 Salem Airport N 44° 54.49 X W 123° 00.12 | | 5. TFR 0/0173, (A-72) Polygon Up to 12,000'. 44° 30'00"N x 122° 35'00"W, 44° 47'08"N x 122° 45'54"W, 45° 03'33"N x 122° 43'02"W, 45° 07'58"N x 122° 36'40"W, 44° 51'58"N x 122° 02'25"W Frequency: 119.850 http://tfr.faa.gov/tfr2/list.html | | | | | | | |
| 6. PERSONNEL NAME PHONE # 7. FREQUENCIES AM FM 8. FIXED-WING Avail/ Type/ Make-Model/ NW Base | | | | | | | | | | | | | |
| AOBD | Nancy Barker | (b)(6) | A/A Primary (A-53) | (b)(7)(F) | ATGS Platform: A-62 N471D Redmond Air Tankers: UAV: A-64 Cobalt - Unmanned Fox 112, Precision Integrated Stalker- Unmanned Fox 201 (Loaned to Riverside Fire) Helibase Support: E-12 Communications Trailer - Incident Solutions, Inc E-42 - Water Tender-Timber Tipper E-45 Water Tender Craig Oil | | | | | | | | |
| HLCO | On Order | | A/A Secondary (A-80) | | | | | | | | | | |
| ATGS | Ryan Koch | | A/G Primary (A-54) | | | | | | | | | | |
| HEBM | Jack Finley (LS-3/16) | | A/G Secondary (A-81) | | | | | | | | | | |
| HEBM | O-318 | On order | Deck | | | | | | | | | | |
| UASM | Marshall Wallace | (b)(6) | Initial Attack Frequencies | | | | | | | | | | |
| 68SH Mgr | Tyler Davis | | IA Primary A/A | (b)(7)(F) | | | | | | | | | |
| 803PJ | Ray Raddatz | | IA Primary A/G 9 | | | | | | | | | | |
| If HLCO/ATGS is not in the air, place all tactical orders for aircraft through the Beachie Creek Helibase on Command Frequency or by phone to Helibase Manager, Jack Finley. Confirm visibility at the fire before launching aircraft. | | | | | | | | | | | | | |
| 9. HELICOPTERS (Use Additional Sheets as Necessary) | | | | | | | | | | | | | |
| FAA # | TY | MAKE/ MODEL | BASE | START | AVAIL | REMARKS | FAA # | TY | MAKE/ MODEL | BASE | START | AVAIL | REMARKS |
| (b)(6) | II | Bell 205 A-1 | Eugene | 0900 | 0930 | Standard | (b)(6) | III | A330 B3 | Salem | 0900 | 0930 | Standard Module from 3PJ |
| | II | Bell UH-1H | Gates | OOS | | Restricted | | III | Bell L-1 | Gates | OOS | | Recon |
| | I | CH-47D | Gates | OOS | | Buckets | | I | S-64E | Gates | OOS | | Tanked |
| | I | S-60 | Lakeview | 0900 | 0930 | Bucket + 18 | | | | | | | |

D. Planning

- The WFDSS is on file in the eDoc box as well as a copy in a physical Doc box.
- The current WFDSS is being re-written as the incident is reaching financial trigger points
- Recommended future staffing includes multiple personnel in the RESL, SITL, DOCL, & GISS positions
- The Planning Section has been able to function and work efficiently out of Building 7 at C.C.C.
- Incident documentation and record retention is being coordinated thru a DOCL that will remain with the incoming team for an additional week.
- Daily meetings facilitated by the Planning Section include noon C&G with both Teams as well as the evening Planning Meeting

1. Situation Unit

- ICS-209 reporting, distribution arrangements and documenting requirements
 - ICS 209 was approved and submitted in 1800 every night to NWCC.
 - Inputs for the 209 was gathered from needed resources by 1630 daily.

- Public Information is included in the review process to help reporting timelines.
- IC approval before submission.
- 209 Summary is emailed to finance, plans and information. There is also an email list of stakeholders in MS Teams
- 209 is distributed to Incident Commanders and Agency Administrators.
- IPW/NWCC Night Report procedures
 - Incident Priority Worksheet (IPW) is sent into the MAC groups by 1800 every night.
- Infrared products and procedures
 - Infrared flights were successful on 6 occasions.
 - Infrared was requested on August 28, 2020.
 - We received 5 Distributed Real Time Infrared Flights (DITRI).

a) Incident Meteorologist/Fire Behavior Analyst

- Weather Forecast Procedures
 - IMET on site – providing IAP forecast for west part of fire.
 - Remote IMET at the Portland Forecast Office – providing forecast for east part of the fire.
- NWS Portland User Briefing via GoTo Meeting
 - 940 am
 - [\(b\)\(6\)](https://global.gotomeeting.com/join/(b)(6))
 - +1 872 240-3212
 - **Access Code:** (b)(6)
- Status of Incident Meteorologists, Fire Behavior Analysts & equipment
 - IMET on site through 9/18/20
 - Remote IMET available through 9/25/20
- Local RAWS locations and data.
 - West side RAWS – Jordan RAWS SYNO3
 - East side RAWS - Boulder Creek RAWS BOFO3
- Portable Incident RAWS locations and data.
 - IRAWS 49 – Butte Creek
 - 44.994944 N -122,583361
 - IRAWS 48 – Old Ranch
 - 44.872917N -122.631306
- Weather contacts
 - IMET Scott Weishaar (b)(6)
 - Remote IMET Shawn Weagle (b)(6)
 - National Weather Service Portland 503-326-2420

b) Status of mapping capabilities including GIS

| Map Type | Description | Designed Size | Other Printable Size(s) |
|--|---|------------------|-------------------------|
| Operations Briefing Map | Operational focus, for briefing, shows the whole fire, topographic | ARCH E (48"x36") | ARCH C (24"x18") |
| Operations Branch I Map | Operations, zoomed in focus on Branch I, topographic | ARCH E (36"x48") | ARCH C (18"x24") |
| Operations Branch II Map | Operations, zoomed in focus on Branch II, topographic | ARCH E (36"x48") | ARCH C (18"x24") |
| Vicinity Map | General overview of Beachie, Riverside, Holiday Farm, and Lionshead fires | ARCH E (36"x48") | ARCH C (18"x24") |
| Transportation Map | Very generic, large scale, could use revision | 8.5"x11" | ARCH C (18"x24") |
| IAP Maps | General view of the fire (not a standard IAP due to size of incident) | 8.5"x11" | ARCH C (18"x24") |
| OPS Tile Maps | 1:24k VectorTopo based high-detailed maps of the whole fire area (currently 15 tiles) | ARCH D (24"x36") | 11"x17" |
| Aviation Map | Zoomed out view of fire, like OPS, and surrounding area with Lat/Long table | ARCH E (36"x48") | ARCH C (18"x24") |
| PIO Maps | General view of the fire, focus on communities | ARCH C (18"x24") | 8.5"x11" |
| Special Concerns Map | All operationally relevant READ information in one place | ARCH E (36"x48") | ARCH C (18"x24") |
| Other maps are currently being developed, but not yet operationally essential: Progression Map, Ownership Map, Pilot Map, Suppression Repair Map | | | |
| <i>*All Maps are georeferenced for use within the Avenza PDF Maps Application.</i> | | | |

• **GIS Data description**

- We used all standard GeoOPS conventions and the Event Geodatabase to store incident specific data for this incident. The National Incident Feature Service was used to store and back-up all incident-specific data as well as funnel the incident data into various federal systems (i.e. EGP, and public perimeter datasets). Additionally, all GIS data was created following the NWCG GeoOps standard directory structure and naming conventions (as closely as possible). See the NWCG Standards for Geospatial Operations, PMS 936: <https://www.nwcg.gov/publications/pms936>.
- We used ESRI Collector for mobile data collection of incident data via 1 FOBS. USFS and BLM READs were also added to the AGOL group containing our ESRI Collector Maps with the intention of using them for suppression repair, but we have not started that effort yet. All Collector maps can be transferred into incoming team/host unit for continued use on the fire.
- All GIS data being used on the incident is stored in FireNet Office365 – OneDrive to facilitate for an amazingly simple virtual/on-site data migration to the new team. The data is also a part of the Office365 Teams "Team" for the fire.
- Due to equipment loss and large fire growth, map production and quality was greatly reduced for a period and we are still catching up.

• **GIS equipment description (computers/network/data storage/plotters)**

- We have two GISS laptops and one Canon iPF750 plotter that will travel with the team but are available for printing needs prior to demobilization. There is also an OSFM plotter available for use.
- FireNet O365 was used for data sharing/collaboration between GISS and eliminated the need for a LAN or data storage to the shared.
- Depending on the needs and capabilities of the incoming team, all data can be transferred/delivered/shared.
- **Map/data distribution information**
 - All PDF maps have been distributed via the NIFC FTP site and data can be pulled from the National Incident Feature Service.
- **Data uploads**
 - n/a
- **Perimeter upload instructions**
 - The National Incident Feature Service was utilized to upload the perimeter to standard Federal systems.
- **Mobile map products and download sites**
 - https://ftp.nifc.gov/public/incident_specific_data/pacific_nw/2020_Incidents_Oregon/2020_BeachieCreek_ORWIF_200299/GIS/Products/current_maps/
 - NIFC ArcGIS Online – there are three groups for the fire using the Situation Unit Approval workflow (Mobile Editing, Working, and Viewing)
- **GIS Personnel on the incident:**
 - Kirk Davis – GISS (WA-DNR)
 - Molly Cox – GISS (US-FWS)
 - John Hawksworth - GISS (OR-ODF)
 - Craig Higbee - GISS-t (WA-DNR)
 - Don Maxell (on the OSFM IMT)
- **GIS data contacts**
 - **Team GISSes**
 - Kirk Davis – NW IMT 13 Lead GISS (demobing with NW IMT 13)
 - kirk_davis@firenet.gov
 - kirk.davis@dnr.wa.gov
 - (b)(6)
 - Molly Cox – NW IMT 13 GISS (demobing with NW IMT 13)
 - molly_cox@firenet.gov
 - (b)(6)
 - Craig Higbee – NW IMT 13 GISS (t) – available
 - Craig_higbee@firenet.gov

2. Resources Unit

- Current Resources as of 9/13/20 at 20:30:
3 HC1, 5 HC2I, 1 HC2
5 DDOZ, 2 ENG3, 8 ENG4, 3 ENG5, 11 ENG6, 1 MAST, 1 SKGN, 9 WTS
149 OH
- Outstanding resource orders as of 9/13/20 at 20:30.
5 HC2I
5 ENG3,4,5,6, 2 DOZ2, 1 EXCA2, 1 MAST2, 1 Log Truck, 1 Feller Buncher
2 TFLD, 1 STEN
- eSuite enterprise database was used to track resources.
- The IAP was produced in Microsoft Word. On 9/13/2020 we printed 350 copies via the copy trailer. An electronic version was provided via a QR code. The email distribution list is located in TEAMS in the Resources Channel.

3. Demobilization Unit

Air travelers with "Mobilization Method" AIR or AR still at incident:

- O-67 Finley Air Travel Request has been submitted
- O-68.51 Laster Demob date is 9/21/20
- O-75 Redding Demob date is 9/19/20
- O-76 Pitts Demob date is 9/19/20
- O-82 Bessy-Wilderness Medics Company arranges flight home
- O-83 Upton-Wilderness Medics Company arranges flight home
- O-113 Hammond Demob date is 9/23/20
- O-166 Gantt Demob date is 9/23/20
- O-178 Carothers Demob date is 9/24/20
- O-189 Straight Demob date is 9/25/20
- O-219 Smith Demob date is 9/26/20
- O-248 Dollard Demob date is 9/27/20
- ATR's are mailed to OREIC_expanded@firenet.gov. Morgan Cooley is doing the Air Travel Requests and her phone number is 541 225-6468.
- Documentation (ICS-221's and General Messages have been filed in Teams/eDocBox/ICS-213-ICS-214/Planning/DMOB_213s and eDocBox/Planning Section/Demob Unit/and pertinent resource type folder for ICS-221 Checkout Forms. Demobilization processes and contacts.

4. Documentation Unit

- **Documentation package status.** The initial ICP was in Gates, OR. On the evening of September 7, the ICP was evacuated and all paper versions of documentation were lost. A new standard paper documentation box (records retention kit) was ordered and paper documentation will include records primarily from September 8th forward. Many Sections/Units are maximizing electronic documentation and the documentation loss may have been minimized by this effort.
- **Special documentation requirements.** Each team has used a slightly different channel/documents structure during their tour at the fire. Most files should be consolidated into a single location for each Section and/or Unit. Copies of any final documents have been copied into the electronic documentation box.

- **Electronic documentation requirements.** The official electronic records retention files (Doc Box) is currently located in Documents/General/eDocBox
 - Any unfiled records should be in the Documents/General/Documentation_Inbox
 - Finance has a complete copy of their records. They can be found in Documents/Finance Channel/EE Final Finance Doc Box
 - The daily IAP has been available via QR code that is directed at this folder: Documents/Plans Channel/IAP – IHF
 - NWIMT# 13 used an online check-in form that saves to the Status Check-in folder (Documents/Status Check-in). Individual files are saved as .htm files and open in any internet browser. As time permits, these may be converted to pdf.

5. Computer Specialist

- | NWIMT13 Team Equipment | Location |
|---|---|
| • <u>Item</u> | <u>Chemeketa Community College, Salem (CCC)</u> |
| • HP MFP printers | 8 |
| • HP HS Printers | 2 |
| • iPF750 Plotters | 1 |
| • 17in Color Printer | 1 |
| • Switches | 4 |
| • Laptops | 14 |
| • Cradlepoint | 1 |
| • Server | 1 |
| • (equipment provided by NWIMT13 will be leaving during transition) | |
| • OSFM has provided | |
| • iPF750 Plotter (will leave with OSFM) | |
| • Copy Trailer Service | |
| • Smart Source Rental Equipment | |
| • 10" iPads | 4 |
| • 24" monitors | 3 |
| • (Rental equipment/services will remain on-site after transition) | |
| • CCC IT Equipment | |
| • Misc. surge protectors | 20+ |
| • Misc. Monitors | 8+ |
| • Acer Laptops | 15 |
| • Switches | 2 |
| • Pacific Office Automation Rental Eq. | |
| • Konica Minolta Biz hub C3350 Printer | |
| • Internet Provider: Chemeketa College IT (503-779-4106 Craig, Jeff, or Chad) | |
| • CCC Guest wifi : SSID= CCCVisitor Passphrase= 62Pattern-99Big | |
| • e-Isuite Database Information: Enterprise Incident: Beachie Creek | |
| • Status of computer equipment including computers, switches, printers, and network arrangements that will remain in place for the incoming team. | |

E. Logistics Section Chief

- 1 BCMG was placed on order to arrive 09/14/20 @ 0600 and a 5 Person Camp crew to arrive at same time for staffing spike camp in Div H.
- IBA Heather Good was extremely helpful throughout the incident. Buying team member Holly was super responsive to e-mails with questions and resolved issues in a timely manner.
- Communications was unable to get replacement repeaters for the ones that were consumed by the fire on 09/07/2020.

1. Facilities

- New term at CCC starts on Sept. 28, Building 7 may not be available. John McIlvain, CCC Emergency manager is aware and working on options.
- John McIlvain 503-403-9624 Emergency Management Coordinator at CCC.
- Custodial Supervisor, David 503-999-2003 at CCC.
- Camp Map can be found by scanning "Current Maps" QR code on page 2 of IAP. The map is georeferenced to function with Avenza.
- 1 BCMG staying with SW Team 2
 - BCMG at CCC – Mike Lane (b)(6) LWD 9/24
- Camp Crew – Shared with Supply and Food for CCC.
- Existing land use agreements
 - Chemawa Indian School – Day sleep, OSFM team sleeping, S-272
 - Managed by David Murdough (b)(6) LWD 9/19
 - Davis Airfield, S-1
 - Albany Airport, S-307
 - Spike Camp field S-371
 - Sandau Helibase S-404
- City of Salem - potable water and grey water disposal
- North Santiam School District –Mari-Linn School, Equipment Staging, 503.769.2336
- Subway, Mill City, Equipment Staging, 503-897-6024
- Freres Lumber Company, Water and Equipment Staging, Lyon and Mill City plants, 503-859-2121. Contact - Ron Borsh (b)(6) S-384
- Frank Lumber Company, Equipment Staging
- Demobed
 - Gates Community Church
 - Contact Pastor Mile Stair (b)(6)
 - Used for temp ICP and overhead camping.
 - Upward Bound camp
 - Contact Diane cell (b)(6)
 - Used for ICP in Gates prior to evacuation.
 - City of Mill City potable water supply and grey water disposal. Stacie cell (b)(6)
 - Off-Site laundry service ordered, not filled at time of writing
 - Shower – Greyback, arrived 9/12, began operations approx. 2000 Contact: Robb – 541-(b)(6)
 - Handwash Trailer, 3-D Washwagon LLC, arrived 9/12, began operations approx. 0630 9/13/20 E-140 Contact – Don Dennis (b)(6)
 - Potable Water Truck – Water-to-Go, Marty (b)(6) E-60 Servicing CCC Showers, kitchen, handwash trailer.
 - Grey Water Truck, Allied Water Service, (b)(6) E- 61

- Potable water supply and grey water disposal both being supplied by City of Salem
 - Potable Water-Cody (b)(6)
 - Sewer – Rich Prange (b)(6)
- City of Keiser was contacted, but their supply is not chlorinated. City of Salem provides sewer to the College. Potable is taken from a meter attached to a hydrant across Fire Protection Drive from the Red Lot. Disposal is to a manhole off Cooley.
- Potable has been tested by Water-to-Go and passed.
- Light tower (1), balloon lights (2), Vendor TOPGUN, Contact April (b)(6) Toby (b)(6)
- Portable Toilets, BestPots. Ordering contact, Cindy Rhodaback, (b)(6) email cccr@proaxis.com Tim (b)(6) S-2 (toilets) 35EA S-3 (handwash) 16EA on incident. Make new requests daily (if needed) requests go to Ordering, copying vendor Cindy so she can requests get to crew to plan for following day.
- Garbage, Pacific Sanitation S-174 is a 30 Yard Drop box at Chemeteka Community College. Calysta (b)(6) Kyle for route supervision.
- “Sherwood Forest” across the street from Supply off of South Campus way, has been a past site for homeless camps. CCC experiences the occasional displaced person entering a building and setting up “home”, as general public has multiple accesses to ICP. Outdoor lights are on a timer and go off late at night. The college has the ability to adjust the timer if requested.

2. Food Unit

- Supported by a Food Unit Leader. E-58 ICS Mobil Catering (National Contracted) was used for this incident at Gates ICP Camp. ICS re-mobilized another unit and moved to Chemeketa Community College ICP, providing meals and lunches for Beachie Creek resources and the Green Team.
- Food Unit also supplied ice, water, and sport drinks. ICS will provide meals and lunches through the end of the incident.
- A type 3 refrigerated trailer E-68 is being used at Chemeketa Community College to supply ice and lunch storage. The lunch refer is supported by 3 camp crew.
- Water, Gatorade, and ice are being supplied from Santiam Ice Co 503-679-2422. Water and sport drinks will need to be ordered as needed basis placing orders through the buying team.

3. Ground Support

- Safety considerations
 - High traffic in camp, fog, and smoke
 - Multiple pedestrians walking through campus
- Travel times for operations personnel
 - From Salem ICP to Gates: 60 Minutes
- Staffing
 - GSUL David Hesburn, 0.68.23, (b)(6) LWD 9/15
 - EQPM Stan Zazado, 0.160, (b)(6) LWD 9/15
 - EQPM Billie Hunter, 0.159, (b)(6) LWD 9/15
 - EQPM Paul Binkoski, 0.68.34 (b)(6) LWD 9/14
 - EQPM (t) Spencer Berg, 0.68.49 (b)(6) LWD 9/15
- Camp Equipment
 - Water Tender
 - Roger Belloir E-48 (b)(6) LWD 9/27
 - UTV's with reciever stinger, trailer, and two helmets each (Top Gun)
 - E-53 Polaris Ranger Vin: (b)(6)
 - E-54 Polaris Ranger Vin: (b)(6)
 - E-55 Polaris Ranger Vin: (b)(6)
 - E-56 Polaris Ranger Vin: (b)(6)
- S #'s for camp supplies
 - Fuel Arco 4433 Lancaster Dr NE Salem. #278
 - Requested Tire Service but has not given an S# as of this document.
 - Carson Fuel Service for Camp Call as Needed S-380. (b)(6)
- Drivers
 - Richard Rath, E-17 (b)(6) LWD 9/17
 - Gaylord Carter E-16 (b)(6) LWD 9/17
 - Jim Benvie E-51 (b)(6) LWD 9/21
 - Dan Hanson E-52 (b)(6) LWD 9/21
- Environmental considerations (wash stations etc.)
- READ is requesting a weed wash but a safe location needs to be identified with operations.
- Access and travel management considerations
 - Driving hazards are severe fog and smoke
 - 4 more drivers have been ordered for 9-14-2020

4. Supply Unit

- Orders reconciled through 9/13/20
- The Ordering Manager placed resource orders through Expanded Dispatch.
 - Expanded Dispatch 541-225-6462
- Local purchased items were delivered daily to ICP. Cache orders were placed by SPUL direct to cache Redmond Cache.
- Critical shortages of cache items include yurts, volume pumps, flight helmets, and some hose fittings.
- Northwest Area Incident Support Cache (NWK), Hector Basso, Cache Manager
hector.basso@usda.gov, 541-504-7230 (office) (b)(6)
 - Cache Orders sent to: northwestfirecache@gmail.com
- Cache orders placed before 0800 daily arrive at approximately 1800. Local purchase delivery times are variable.
- O-68.22, Carol Ogilvie, Supply Unit Leader, NWIMT 13
- O-68.24, Rob Jeter, Ordering Manager, NWIMT 13
- O-43, Jared Richey, RCDM (t), (b)(6) OR-WIF Started 09/13
- O-44, Jason Sever, THSP-FLOP, (b)(6) OR-WIF, next days off 9/15 and 16.
- C-17, Mosqueda Reforestation, 20-person Type II Camp Crew. Fransisco Cisneros, Crew Leader, Cisneros plus 9 first day 9/6/20, 5 additional crew members added on 9/10/20 and 5 more added on 9/13/20.
- O-303, Laurel Kanoho, EQTR assigned to Supply, OR-WIF Start Date 9/13
- O-304, Glen Kanoho, THSP, OR-WIF Status of resource ordering (reconciliation) Start Date 09/13

5. Security

- Security – Beachie Creek Incident Command Post (ICP) is located at CCC. The camp is accessible from Lancaster Dr. NE, 45th Ave NE, Satter Dr. NE, and Winema Place NE.
- Goal - Ensuring the safety and security of all personnel and property at the incident command post and camp.
 - Coordination with the local Forest Service Law Enforcement Officers, Marion County Sheriff Office, Linn County Sheriff Office, and Oregon State Police.
 - Providing law enforcement personnel to patrol evacuation areas.
 - Providing security guard personnel to staff the campus to prevent unauthorized entry into the fire camp.
 - Ensuring compliance with existing laws and regulations as well as any special regulations established by the Incident Commander.
- Contingencies
 - Foot patrol though out the CCC grounds paying close attention to the Supply, resource parking areas, sleeping areas, buildings 7 and 5, and the kitchen area.
 - Controlled entry into building 5.
- Staffing Hours for all day shift Security personnel is 0600-2230 hours to accommodate ICP. Staffing hours for all night shift Security personnel is 1700 – 0930 hours to accommodate ICP.
- Due to increased personnel needs, an agreement was made with the college to utilize the baseball and softball fields for crew sleeping area.
- Due to increased parking needs, an agreement was made with the college to utilize the red, brown, purple, and yellow parking lots
- SECM continues to coordinate with Willamette National Forest Law Enforcement, Bureau of Land Management Northwest Oregon District Office and law enforcement, and local agencies.
- Resources Needs
 - 8- SEC2's for ICP. Resource orders have been ordered but have not been filled.
 - 2 SEC1's with marked LE vehicle and all equipment for the Beachie Creek Fire incident. They have not been ordered.
- Staffing Needs
 - Remaining SEC2's will be utilized to maintain sufficient staffing levels consistent with needs of the incident.
 - SECM will be timing out on 9/22/2020. SECM(T) will be timing out on 9/24/2020.
 - SEC 2's and security guards will be timing out starting on 9/18 through 9/22/2020.

6. Communications Unit

- Most of the fire communications relies on the OSFM Green Team communications equipment. All communications on the east end of the fire are being provided by the single Forest Service repeater named Coffin.
- All NIFC Repeaters burned over on 9/7 and have not been recovered (CMD7, CMD8, and the Hub Repeater).
- NIFC replacement equipment is unavailable.
- All cooperating agency infrastructure providing radio coverage up the HWY 22 corridor has gone off line. While the area is closed to the public, First Net is providing cell coverage. This coverage may disappear as the general public starts to repopulate in the community.
- The two back up Forest Service Repeaters have also gone off line (Stoney Mtn and Halls Ridge).
- The OSFM Team may need to remove equipment from the fire when they demob.
- Fire line communications is spotty and difficult in several Divisions. The OSFM Team has deployed four repeaters on the west end of the fire in an effort to provide coverage in the urban interface areas. On the east side of the fire all resources are using the Coffin Repeater. Beachie Creek and Lions Head resources are competing for air time as Coffin is the only functioning repeater in the area.
 - Equipment
 - S-172 4390 STARTER KIT C-8 / L-6
 - S-172.1 4381 COMMAND/TAC Shipping Case Lost in Fire
 - S-172.2 4381 COMMAND/TAC Shipping Case Lost in Fire
 - S-172.3 4381 COMMAND/TAC Shipping Case Lost in Fire
 - S-172.4 4244X2 LOGISTICS RADIO 13 radios and shipping case lost in fire
 - S-172.5 4312 COMMAND REPEATER Unknown Condition
 - S-172.6 4248 LOGISTICS REPEATER Unknown Condition
 - S-172.7 4370 AIRCRAFT LINK Unknown Condition
 - S-172.8 4330MD REMOTE KIT Lost in Fire
 - S-172.9 4100 ACCESSORY KIT Lost in Fire
 - S-172.10 4100 ACCESSORY KIT Lost in Fire
 - S-187 4312 COMMAND REPEATER
 - S-270.1 4381 COMMAND/TAC
 - 65 Cases AA Batteries
 - There has been a yurt for the Communications Unit on order for 8 days unable to fill. The OSFM has offered to bring the Beachie Creek staff into their communications vehicle.
 - Radio calls are being answered by the corresponding team's communications staff. The OSFM Team has a communications vehicle and is staffed by:
 - 2 ComL's
 - 1 Com Tech
 - 2 Com Tech Trainee's
 - Beachie Creek Communications unit is working off of two portable radios with mag mounts.
 - RADO Kent Moffitt O-157 9/21 is last work shift.
 - RADO On order
 - RADO - nights On order

7. Medical Unit

- Facility locations -Medical Unit ICP Modular unit 62 by shower units on CCC Campus.
- County COVID Phone assistance 503-588-5342. Green Team COVID Liason is leading the ICP COVID Coordination.
- EMT status in camp- MEDL (Advanced EMT)
- We did see a steady daily flow of personnel coming in for routine checks, foot needs, Poison Oak, insect bites, sprains and strains, aches and pains and slight camp crud related to smoke in ICP with no Covid symptoms presented. We also transported 1 patient from the line with (Anaphylaxis).

F. Finance

- Beachie Creek – OR-WIF-200299
- WADNR – 221-IWJ
- USFS – (b)(4)
- DOI – NFN5
- FINANCE PERSONNEL – No NWIMT#13 personnel will remain on the incident.
- PAYMENT AGENCY – Forest Service
- Documentation, 100% electronic finance package, can be found on FireNet TEAMs incident site 2020_ORWIF_Beachiecreek_Finance (must be given permissions).
- Agency Incident Business Advisors are Heather Good, heather.good@usda.gov (b)(6) and Saren Whitney, saren.whitney@usda.gov (b)(6). Saren is also the Willamette NF Incident Business Specialist.
- DATABASE – all data entry was done in e-ISuite Enterprise. Permission can be given by Eugene Interagency Communication Center, attn. Erin Ely (b)(6) use NAP password to log in.

1. Cost Unit

- Cost information posted into the e-ISuite database has been from the air operations cost summaries, local purchase information, EERA's and commercial invoices.
- Daily estimates as follows –
 - Daily Cache charges at \$60 per person/per day using ICS-209 personnel information.
 - Daily Buying Team costs per their spreadsheet are posted in e-ISuite.
 - Per Diem was granted from the beginning of the incident, \$55 per day. After the arrival of the caterer, per diem ceased. Unfortunately, per diem began again on 9/8/2020 because of the burn over. Caterer returned on Saturday, 9/12/2020. Per diem stopped with dinner service on 9/12/2020
 - NERV vehicles were rented. Used the NERV spreadsheet on the NERV website to gather number of vehicles on incident.
 - EERA's were written for Land Use Agreements.
 - Commercial Rental/Service Agreements being paid for by the Buying Team. These were E-175 National Business Solutions (copier), S-201 Cascade Ice. Cascade Ice has closed out. They went back to Gates and retrieved their ice trailer. S-203 American Barricade, S-248 Smart Source, S-348 Pacific Office Automation and S-380 Carson's (fuel delivery). These are captured in the Buying Team Spreadsheet.
- Following is the list of Land Use Agreements. The only ones that are still active are S-1 Davis Airport, S-307 Albany Municipal Airport and S-172 Chemawa Indian School. The CCC S-280 is still being completed.

| Assign Date | Resource Number | Vendor |
|-------------|-----------------|--------------------------------------|
| 8/17/2020 | S-1 | Davis Helibase |
| 8/22/2020 | S-64 | Opal Creek Ancient Forest Center |
| 8/25/2020 | S-124 | Gates Community Center |
| 9/04/2020 | S-184 | ICP – Upward Bound Camp |
| 9/04/2020 | S-185 | City of Gates – Vehicle Inspection** |
| 9/09/2020 | S-272 | Chemawa Indian School |
| 9/09/2020 | S-280 | Chemeketa Community College |
| 9/12/2020 | S-307 | Albany Municipal Airport |
| 9/13/2020 | S-384 | Freres Lumber Company |
| 9/13/2020 | S-404 | Sandau Helibase |

** City of Gates, agreement 1204R420K5513 – No cost

2. Time Unit

- All CH and cooperator documentation for accurate payments are complete and in TEAMS files.
- Documents are coming in through the email on the 2020.beachiecreek.finance@firenet.gov and the UPLOADS FOLDER in the email subdirectory.
- Personnel have been scanning documents using the scanning devices we have placed in Finance and at Check In. The scanned documents go directly to a network finance folder. This has been the favored process for receiving TIME documents.
- All relevant incoming emails were filed under the CTRs/Resource Order in the email directory.
- Interim Payments - State employees are paid on the 1st and the 15th. Each employee must project and submit their time at least two days before the due date. Each employee must sign their OF-288. Scan signed original and place in TEAMS site. When the employee demobs, the original is sent home with them.
- All USFS AD OF-288's get sent via email to ASC. Template for Transmittal Cover Letter is in the Team Finance Channel/CC Payments Ready for Payment Center/FS Casual Hires (AD's)/Attachment C: Processing Incident Time Reports for Casuals. Last number used: OR-WIF-200299-011
- All Cooperator contracts have all been downloaded on to Teams site in appropriate employee folder.
- Some local resources have been on fire since 8/18/2020. Their time has been updated and all other local resources should be closed out at this time.
- O-13 Barlett is a CH that has been on incident since 8/18. He requested not to receive payment until his detail is completed 6 days from today.
- Phoenix IHC C-20 has 5 pieces of equipment in addition to the 20-person crew. They have been added to their roster as: C-20.111-115. They are to receive 286 invoices upon demob along with OF288. See their agreement in their TEAMS folder.
- On 8/7-8/8, our ICP was evacuated and therefor you will see a lot of excessive hours for those days. The IC wrote a general message to justify all the hours worked during the emergency evacuation of ICP.

3. Compensation for Claims

COMP for Injury/Illness:

- No injuries or illnesses.

Claims for Damage/Loss:

- There are no outstanding comp or claims.
- Tire replacements will need to fill out an OF-289 with the supplement and pictures. It will need to be approved by the IBA before it can be replaced. A BPA is setup for repair and replacement just outside of the city of Stayton at Les Schwab, 400 SW Sublimity Blvd., Sublimity, OR, 503-769-3432.
- Saw parts orders will be sent into supply unit leader. They will have Op's approve all saw parts. If Op's feels parts are not reasonable, the crew can put a claim in on an OF-289 for the IBA to approve files.

4. Procurement Unit

- We're at a point in the fire where unless there is an unexpected weather event or an unusually erratic fire behavior, we are maintaining fire operations with roughly 25 engines, 9 tenders, 8 EMT units, 6 faller mods, 5 dozers, 4 drivers, 3 contract crews, 2 ambulances, a skidgeon and a masticator. Everything has been built into elsuite and we are able to process the daily shift tickets and CTRs. Note: E-98 PatRick broke down and was repaired, but no pay the entire day of September 11, 2020.
- A note about per diem because we had a kitchen sporadically. First, contractors, per contract, are not entitled to per diem on their travel day or the first working shift. Starting the second working shift, if there is no kitchen in fire camp they are entitled to per diem. The first day we had a contract kitchen was September 7th, the night that the fire burned over in the ICP. There was no kitchen on September 8th. There was a kitchen from September 9th to date. Everyone including the team slept in their cars on the night of September 7th. Camp was available to all before and after that.
- Invoices for standing items, such as light towers, tents and such that were damaged in the fire, will be processed before the incoming team assumes command with an ending date of September 9, 2020.

VII. Incident Resources Remaining

(The use of I-Suite or other data base reports is encouraged in lieu of completing the following sections)

A. Command

| Position | Name (first last) | Resource Order # | Location | Planned Demob |
|--------------------|---------------------|------------------|----------|-------------------------|
| PIO 1 (AD) | Bernie Pineda | | ICP | |
| PIO 1 | Al Nash | | ICP | |
| Local Unit Support | Amy Borba | None | ICP | In perpetuity as needed |
| Local Unit Support | Homan Hamedanizadeh | | ICP | |
| Local Unit Support | Erin Phillips | | ICP | |
| Local Unit Support | Joan Schmidgall | | ICP | |
| Local Unit Support | Loren Farque | | ICP | |
| Local Unit Support | Cayla Kennedy | | ICP | |
| Local Unit Support | Delani Herb | | ICP | |
| Local Unit Support | Emma Vasilj | | ICP | |
| Local Unit Support | Madeline Herrmann | | ICP | |
| Local Unit Support | Jordan Woodcock | | ICP | |
| Remote | Jim Cahill | | Remote | |
| Fire Marshall | Stefan Myers | | ICP | |
| Remote | Linda Parker | | Remote | |
| Local Unit Support | Scott Owen | | ICP | |
| Local Unit Support | Alan Perry | | ICP | |
| SOF2 | Jim Shank | O-260 | ICP | 9/25 |
| SOFR | Don Fulmer | O-232 | ICP | 9/25 |
| SOF2 | Barry Hogge | O-238 | ICP | 9/26 |
| SOF2 | Charley Burns | O-68.26 | ICP | 9/17 |
| EMTF | Mitch Upton* | O-83 | ICP | 9/19 |
| EMPF | Mark Bussy | O-82 | ICP | 9/19 |
| EMFT | Samuel Clairmont | O-155 | ICP | 9/21 |
| COVID EMT | Don Turner | O-151 | ICP | 9/22 |

| Position | Name (first last) | Resource Order # | Location | Planned Demob |
|-----------|-------------------|------------------|----------|---------------|
| COVID EMT | Seth Buchanan | O-152 | ICP | 9/22 |
| EMFP | Chance Lindner | O-156 | ICP | 9/23 |
| EMPF | Braeden Harris | O-185 | ICP | 9/23 |
| EMPF | Wes Ferraccioli | O-186 | ICP | 9/24 |
| EMTF | Rose Triolo | O-216 | ICP | 9/25 |

B. Operations (Ground)

| Position | Name (first last) | Resource Order # | Location | Planned Demob |
|----------|-----------------------|------------------|----------|---------------|
| | See e-Isuite database | | | |

C. Operations (Aviation)

| Position | Name (first last) | Resource Order # | Location | Planned Demob |
|----------|-------------------|------------------|----------|---------------|
| | See ICS 220 | | | |

1. Aircraft

| Type | Tail Number | Resource Order # | Manager | Model |
|------|-------------|------------------|---------|-------|
| | See ICS 220 | | | |
| | | | | |
| | | | | |

D. Planning

| Position | Name (first last) | Resource Order # | Location | Planned Demob |
|----------|-------------------|------------------|----------|---------------|
| SITL | Stephan Hammond | O-113 | ICP | 9/22/2020 |
| GISS | Craig Higbey | O-111 | ICP | 9/20/2020 |
| DOCL | Carrie Straight | O-189 | ICP | 9/25/2020 |

E. Finance

| Position | Name (first last) | Resource Order # | Location | Planned Demob |
|----------|-------------------|------------------|----------|---------------|
| | None | | | |
| | | | | |

F. Logistics (Personnel)

| Position | Name (first last) | Resource Order # | Location | Planned Demob |
|-----------|-------------------|------------------|----------|---------------|
| | | | | |
| SECM | Presley, Shane | O-100 | | 9/22/2020 |
| SECM(T) | Mitsuyasu, R | O-229 | | 9/24/2020 |
| SEC2/SECG | Kellogg, Amy | O-332 | | 9/18/2020 |
| SEC2/SECG | Bartlett, Allen | O-372 | | 9/19/2020 |
| SEC2/SECG | Anderson, S | O-331 | | 9/20/2020 |
| SEC2/SECG | Waddell, Dean | O-374 | | 9/21/2020 |
| SEC2/SECG | Quercia, Ellie | O-296 | | 9/22/2020 |
| | | | | |
| | | | | |

G. Logistics (Equipment & Supplies)

| Equipment Type | Vendor/Name/NFES # | Resource Order # | Location | Planned Demob |
|----------------|-----------------------|------------------|----------|---------------|
| | See list in Logistics | | | |

VIII. NWIMT#13 Type 2 IMT Contact Information

| Position | Last Name | First Name | email | Work phone | Cell phone |
|-------------|-----------|------------|--|------------|------------|
| ICT2 | Gales | Brian | brian_gales@fws.gov | (b)(6) | |
| ICT2 | Click | Lonnie | (b)(6) | | |
| SOF2 | Hershey | Raymond | (b)(6) | | |
| PIO2 | Rishe | Randall | rrishe@blm.gov | | |
| SOF2 | Burns | Charley | (b)(6) | | |
| HRSP, TNSP | Dietrich | Margeret | margaret.dietrich@dnr.wa.gov | | |
| ICT2 COVID | Nickey | Larry | (b)(6) | | |
| PIO2 | Anderson | Joe | (b)(6) | | |
| FSC2 | Klukas | Veronika | veronika_klukas@fws.gov | | |
| COST | James | Paula | paula_james@firenet.gov | | |
| PROC | Hudson | Carolyn | (b)(6) | | |
| ICPI | Gavenas | Robert | (b)(6) | | |
| PTRC | Compton | Alicia | alicia.compton@dnr.wa.gov | | |
| COMP-T | Hershey | Lynda | lynda.hershey@usda.gov | | |
| PTRC-T | Chapman | Angie | angie_chapman@fws.gov | | |
| OSC2 | Reiner | Eric | eric.riener@usda.gov | | |
| LSC2 | Gardner | Justin | justin.gardner@dnr.wa.gov | | |
| COML | Nordloh | Jarrold | jarrod.nordloh@dnr.wa.gov | | |
| SPUL | Ogilvie | Carol | carol.ogilvie@usda.gov | | |
| GSUL | Hesburn | Dave | (b)(6) | | |
| ORDM | Jeter | Robert | robert.jeter@usda.gov | | |
| LSC2 Deputy | Hammer | Jim | (b)(6) | | |
| FACL | Yonaka | Keith | keith.yonaka@dnr.wa.gov | | |
| MEDL | Meacham | Ben | ben.meacham@clarkfr.org | | |
| EQPM | Binkoski | Paul | (b)(6) | | |
| INCM | Preston | Cindy | cindy.preston@dnr.wa.gov | | |
| COMT | Pugh | Chris | chris.pugh@dnr.wa.gov | | |
| EQPM-T | Berg | Spencer | spencer_berg@fws.gov | | |
| OSC2 | Neckels | William | billn@scfd4.org | | |
| OSC2 | Reiner | Eric | | | |
| AOBD | Barker | Nancy | nancy.barker@dnr.wa.gov | | |
| DIVS | Stone | Jesse | istone@chelancountyfire.com | | |
| DIVS | Meyer | Todd | tmeyer@piercefir.org | | |
| DIVS | Laster | Wade | | | |
| OSC2 | Halford | Pat | (b)(6) | | |
| DIVS | Machado | Whitney | whitney.machado@usda.gov | | |
| OSC2-T | Moore | Michael | mike.moore2@usda.gov | | |
| OSC2-T | Spencer | John | (b)(6) | | |
| PSC2 | Henderson | Darrin | darrin_henderson@firenet.gov | | |
| SITL | Blystone | Michael | sblystone@scfd9.org | | |
| RESL | Butcher | Meredith | meredith.butcher@usda.gov | | |

| Position | Last Name | First Name | email | Work phone | Cell phone |
|----------|-----------|------------|--|------------|------------|
| FBAN | Warner | Dean | dean.warner@dnr.wa.gov | (b)(6) | |
| ITSP | Johnson | David | david.johnson@dnr.wa.gov | | |
| GISS | Davis | Kirk | kirk.davis@dnr.wa.gov | | |
| SCKN | Hoffman | Sandra | sandy.hoffman2@usda.gov | | |
| DMOB | Backlund | Laura | (b)(6) | | |
| PSC2 | Nichols | Aileen | aileen.nichols@dnr.wa.gov | | |
| RESL | Bergvall | Laurie | Laurie.Bergvall@dnr.wa.gov | | |
| ITSP | Woodward | Vonieta | vonieta.woodward@dnr.wa.gov | | |
| ITSP-T | Hixon | Jeff | Jeff.hixon@dnr.wa.gov | | |

IX. Agency and Cooperator Contacts

| Contact | Phone | Cell | Email |
|--|-------|------|-------|
| See Liaison Larry Nickey for Agency & Cooperator list. | | | |

X. IAP & ICS 209 Mailing List

- See files from Situation and Resource Channels in MS Team

Incident Transition Plan

INCIDENT NAME and NUMBER: Riverside (OR-MHF-000859)
Beachie Creek (OR-WIF-200299)

Pacific Northwest Team 3, Type 1
to
Pacific Northwest Team 8, Type 2

This Transition Plan will guide the orderly **transfer of command** on this incident. This Plan, along with the ICS 209, Incident Status Summary, applicable maps, resource and demobilization information, and authorizing delegation(s) of authority, adequately summarize the status of the incident sufficient for transfer of command.


The Risk and Complexity Assessments were completed on 9-14-2020 for the Beachie Creek fire and 9-23-2020 for the Riverside fire. Both are shown in (Section H) of this document.

Plan Approval(s): (required)


Agency Administrator(s) or Area Commander:

| Agency | Agency Administrator Signature | Date |
|-------------------------------|--|-----------|
| Oregon Department of Forestry |  | 10/6/2020 |
| Bureau of Land Management |  | 10/6/2020 |
| U.S. Forest Service |  | 10/6/2020 |

Outgoing Incident Management Team:

| IMT Name | Incident Commander Signature | Date |
|--------------------------|--|---------|
| Pacific Northwest Team 3 |  | 10/6/20 |

Incoming Incident Management Team:

| IMT Name | Incident Commander Signature | Date |
|--------------------------|--|-----------|
| Pacific Northwest Team 8 |  | 10/6/2020 |

Incident Transition Plan

A. INCIDENT OBJECTIVES

- Ensure all actions reflect a commitment to firefighter, first responder and public safety through the development of tactical operations that are commensurate with values at risk and have a high probability of success.
- Take appropriate actions to limit the size and duration of the incident to minimize smoke impacts on local communities.
- Use appropriate strategies to minimize impacts of high intensity fire to important natural resource values and other important natural resources.
- Minimize damage to structures, private property, infrastructure, and private forest resources.
- Identify suppression repair needs where containment has been reached and implement actions to address needs per agency specific standards.
- Effectively manage incident costs through the selection and implementation of strategies and tactics that have a high probability of success in meeting objectives.
- Maintain or enhance relationships with, and provide timely and accurate information to cooperating agencies, stakeholders, property owners, public and media on the fire status and incident activities.
- Coordinate with local agencies and support initial attack as requested.
- Employ and enforce recognized Best Management Practices to minimize the spread of COVID and look for ways to enhance COVID mitigation measures.
- Create and maintain a work environment in which people are treated with respect and dignity.

B. TRANSITION SCHEDULE and COORDINATION

Pacific Northwest Team 3 (PNW3) will transition with Pacific Northwest Team 8 (PNW8) on October 7, 2020 and will participate in incident management operations until PNW8 assumes command of the incident at 1800 on October 7, 2020.

PNW3 will develop and produce the Incident Action Plan for the October 7, 2020. PNW3 and PNW8 will jointly develop and produce the Incident Action Plan for October 8, 2020. PNW8 will conduct the morning briefing on Thursday, October 8th at the ICP located on the Chemeketa Community College campus.

C. ORGANIZATIONAL NEEDS

A partial list of resources to be left with the incoming IMT, by ICS function, is included in **Section F** of this narrative. The incoming team should continue to coordinate with Expanded Dispatch in Eugene (Beachie Creek) and Vancouver (Riverside) regarding the release and reassignment of resources.

D. CONTACTS

A list of important contacts, by ICS function, with phone numbers and/or email addresses is included in **Section G** of this narrative.

Incident Transition Plan

E. FUNCTIONAL HIGHLIGHTS

1. Command

- **Political considerations:** The Social/Political elements at play for both the Riverside and Beachie Creek incidents were and remain complex. Both incidents have resulted in significant loss of homes, damage to private property, industrial timberlands, public lands, infrastructure and in the case of Beachie Creek - life. Several communities, including Detroit, Gates, Mill City, Lyons, and Estacada have been directly impacted by fire while numerous others have experienced evacuations and other impacts to their economy. The damage to commercial forest lands is extensive. Long term fire impacts on Federal lands, particularly to key watersheds, may affect downstream communities for years. This level of damage has resulted in a high level of political attention ranging from national to local level interest. Visits were made by congressional offices, the Governor's office, county and city officials.

Local and national interest in the initial suppression actions on the Beachie Incident has been the subject of questions and conversations during our time on this incident. Interest in the cause and origin of the fire relative to the rapid growth beginning on September 7th 2020 has been high. Messaging has been deliberate and coordinated closely with agencies.

During the initial phases of both incidents, in particular the Riverside incident, tensions among local residence were very high, in part due to concerns of looting and vandalism during evacuations and in part due to the general social unrest closer to the Portland metropolitan area. These concerns had been addressed by the IMT working the Riverside incident prior to our arrival and were not an issue during PNW3's tenure. Operational personnel are beginning to receive feedback from some residence that responder presence is no longer necessary.

Both fires are in close proximity to the population centers of Oregon. The Beachie Creek fire within 20 minutes of the State Capital in Salem. During PNW3's tenure we have hosted several state and Federal "visits", a trend which is expected to continue as the focus of the response transitions to Repair and ultimately recovery and BAER/ESR work.

- **Agency Administrator or Area Command expectations:** PNW3 was initially issued a delegation from Area Command as we assumed command of the Riverside Incident on 9/24/2020 at 18:00. The delegation included language to assume command of the Beachie Creek fire on 9/29/2020 at 06:00. Both transitions occurred as scheduled. On 10/1/2020, following the departure of Area Command, a new delegation was issued from the Willamette and Mt. Hood National Forests, Oregon Department of Forestry, and Bureau of Land Management for the management of both the Riverside and Beachie Creek fires.

Agency expectations were clearly articulated by all the respective agencies represented under the delegations received. They can be summarized as:

- Maintain focus on and develop process to ensure firefighter and public safety. An emphasis was placed upon appropriate prioritization of effort toward protection of

Incident Transition Plan

life and property, use of a deliberate risk management system to appropriate develop and implement actions balancing risk and reward, and communication to the firefighter and citizens of actions and associated risk. One Agency Administrator on the Riverside Fire specifically asked to be informed of any “High” residual risk outcomes. Daily Risk assessments were available to the Agency Administrators both electronically and in hard copy.

- Prioritize maintaining and building relationships, locally and regionally, with the myriad of cooperators, impacted citizens, and communities.
 - Minimize further impacts to private lands and communities, work to get citizens back into their homes, assist cooperators with access to operations associated with recovery including road opening, powerline and infrastructure repair, and assessment and implementation of timber harvest
 - Move from fire suppression into suppression repair and ultimately into support for recovery efforts.
- **Documentation/scheduling of FAST, ASTAT, Cost, HR and other oversight teams:**
N/A
 - **Cost containment objectives and opportunities:** Cost concerns and objectives were identified early on and discussed with agencies as changes occurred. Cost shares agreement were in place and modifications were made as operations changed over time. During the team’s tenure operations were scaled appropriately to the needs of the incident, resulting in savings in personnel and aviation costs.

A cost analysis was conducted to compare and daylight the expected cost of use of hotels for lodging for fire personnel. Use of the dorm facilities at ICP was a cost-effective alternative to motels while still providing for COVID mitigations and support of the Firefighter.

The strategic decision to construct indirect rather than direct line across the eastern perimeters of both the Riverside and Beachie Creek Fires, while not based on economic considerations, resulted in a significant cost savings over a direct suppression strategy. The decision to use one IMT to ultimately manage both the Riverside and Beachie Creek incidents also resulted in significant cost savings.

- **Cooperator involvement:** There have been numerous, engaged cooperators on the incident, from local government to large landowners. Private utility companies and Oregon Department of Transportation have been heavily involved in recovery efforts. Private Timber Companies have been providing equipment and personnel as well as requesting access to assess and begin salvage operations on impacted properties.
- **Daily conference calls:** 0730 GACC IC Call (NWCG conference line); 0830 Call with Lionshead and Holiday Farm incidents (888-844-9904, (b)(6) Passcode, (b)(6) hostcode) hosted by the Riverside/Beachie Creek incident.
- **Community meeting schedules:** The team has been posting Daily Facebook morning update provided by the IC following the Operational Briefing. We started off with daily Facebook live afternoon public meetings which due to Facebook/zoom interface issues were changed to recorded Facebook presentations. The team is currently hosting periodic recorded Facebook presentations prefaced with an outreach for questions to be addressed.

Incident Transition Plan

1a. Human Resource Management

- **HRSP R6 and National GAC:** Susie Manezes, (b)(6)
- **R6 CISM Lead:** Katie Mergel (b)(6) - CISM was enacted prior to this Team's arrival on both incidents.
- **Acting Civil Rights Director:** Audrey Matsumonji (b)(6)
- **Employee Relations Supervisor:** Sebastian Evans (b)(6)
- **Mt. Hood Forest Employee Relations:** Jane Calkins (b)(6)
- **Mt. Hood Union contact:** Alan Neff, PPOC, (b)(6) Darrin.neff@usda.gov
- **Willamette National Forest Union contact:** Tony Farque, President (b)(6) unable to make contact)
- Numerous concerns from personnel affected by Beachie and Riverside Fires
- No Civil Rights issues were brought to HRSPs attention

2. Safety

- **Major Hazards Safety Hazards (aerial hazards, driving, and aviation operations):**
Missions that were identified for both fires:
 1. Maintain line to keep the fire within the containment box.
 2. Safely and effectively implement actions identified in the Suppression Repair Plan Support Initial Attack incidents as requested.
 3. Using monitoring and Aviation Operations, check/hold fire spread in critical areas to manage how the fire grows.
 4. Respond as requested to Initial Attack incidents.

During the daily Deliberate Risk Assessment, we identified hazards and mitigations for each operational period. Below is a list of hazards with the highest risk to firefighters. The list is *not* inclusive of all hazards present on the fire and *mitigations do not include standard* fireline operational procedures (LCES, 10/18, etc.) as adherence is implied.

| Tasks | Hazards | Mitigations/Controls |
|--|---|---|
| Mission Intent: Maintain line to keep the fire within the containment box. | | |
| Hazard tree identification &/or removal, mop up, patrol, ground transportation, backhaul, provide presence and monitor for high visibility smokes, air/satellite patrol & monitoring, heavy equipment work (chippers, dozers, excavators), air support | rolling, sliding debris, tree felling, fire weakened timber, driving, WUI debris and infrastructure damaged by the fire, coordination with adjacent fire IMTs, mission creep with mop up, Ash pits from large stump burn out now capped by rain wetted ash, gravity hazards | Remain diligent during these tasks, continually evaluate conditions near work area, particularly if winds pick up, overhead will ensure collaboration with neighboring fire IMTs, sense of urgency is reduced when driving and performing tasks. Mop up specs allow good latitude to avoid over-committing - ensure resources are tuned in to human tendency. check ash areas for heat/depth prior to mop up/walking over. Proper distancing during bucket drops. |

Incident Transition Plan

| | | |
|---|---|--|
| Mission Intent: Safely and effectively implement actions identified in the Suppression Repair Plan. | | |
| Collaborate with READs, heavy equipment, hand crews, ground transportation, water bar installation, pull berms, assess/snagging fire damaged trees, backhaul, assess & prioritize scope of work | unstable soils/timber, slippery roads and footing, mission creep without a clear plan in place (particularly with multiple agency perspectives), fire damaged timber, gravity hazards in burned areas | engage when and where appropriate, seek clarification on extend and intent behind repair end state, use appropriate pace for tasks at hand, avoid snagging, driving, or work under canopy if conditions aren't conducive. Prioritize interior lines that need to be repaired: ensure appropriate resource is assigned (mechanical v hand, etc.). Use tactical pauses after assessments and work with READs/Ops to determine best options for areas with notable hazards. |
| Mission Intent: Using monitoring and Aviation Operations, check/hold fire spread in critical areas to manage how the fire grows. | | |
| Patrol/monitor (electronic/satellite and physical/aviation assets), prevent alignment with slope/fuels using bucket drops, fire behavior modelling | Lack of landing locations given timber type and slopes, potential for fall weather of prolonged east winds, long/difficult extraction potential | Clear intent for mission objectives and when to engage, use modelling to determine site's specific potential for fire growth, remote monitoring when possible (satellite), combine flights in this mission with others to avoid unneeded "extra" flights, terrain is generally not steep/deep canyons or tight navigation spaces, pilot discretion |
| Mission Intent: Respond as requested to Initial Attack incidents. | | |
| Identify tactical options and prep, ground transportation, engine operations, air operations support, air/satellite monitoring evacuations, public interaction, structure damage assessments, pumps/hose | communication, coordination with other responding entities, increased sense of urgency, particularly on private land or around structures | overall conditions are likely to limit the chances of an IA, resources are familiar with similar terrain, topography and conditions, take time for adequate assessment prior to engagement, coordinate with other responders on site to establish a coordinated plan |
| Daily Risk Conversation Notes: New DRA for Riverside Fire established 9/24/20 by PNW3. Additional details will be fleshed out in subsequent operational periods. 9/25: Overall assessment and awareness for condition of the firefighters: wet/damp, fatigue, smoke, etc. cumulative effects and current condition of the crews. 9/26: TFR has been lifted and resources should expect a significant increase in non-incident aircraft overhead performing a variety of flights (utilities, timber interests, insurance companies, media, etc. 9/27: East winds gusting to 50 mph can impact | | |

Incident Transition Plan

all missions (overhead hazards - damaged and green trees lose soils/rocks, powerlines, etc.) - proactively establish disengagement triggers and safe meeting/parking locations/routes. Accountability/logistics: have systems in place at the Branch level to maintain accountability for all assigned resources as we move to new RON locations/facilities and new morning briefing location(s). Large fire footprint and assigned area still requires response in a meaningful way for IWI, flare ups, etc. 9/28: DRA includes both Riverside (double lettered DIVS ex: AA) and Beachie Fires (single lettered DIVS ex: A). Br I/Willamette: taller trees on steep slopes makes for larger strike radius and higher secondary slide hazards. This may not affect many resources on foot as those tasks minimal in this timber type. It WILL affect driving on some fire impacted roads. DIVS OO/PP/QQ: Lionshead Fire resources will be paid by Riverside to complete the indirect line but we will maintain oversight/coordination and accountability for accident reporting, costs, etc. The footprint under IMT management has doubled, increasing the complexity and potentially reducing short term clarity. Trust then verify to ensure SA and understanding. The areas have very different social-political landscape requiring an awareness of that diversity. Need for talking points for interactions. 9/29: BAER initial assessment group will be on Riverside Fire; well-coordinated with IMT on separate 204. 9/30: 30% chance of narrow valleys/visibility being impacted by smoke (esp.: Hwy 22, Elkhorn, Detroit, etc.). Significant increase in external entities wanting access into the fire area (timber salvage, residents, insurance companies, utilities, traffic overall, etc.) leading to rise in pressure in the system. 10/1: Elimination of Missions 1 (Prepare direct containment line...) and 2 (Prepare indirect containment line...) based on mission completion and shift of effort into Mission 3 (Maintain line...). Creation of new Mission 6. 10/2: hunting season opener: should not result in changes within fire perimeter due to good messaging/awareness/education; however, increase expected in overall traffic and population in the general vicinity to be aware of. 10/3: Locks on gates have been cut, potential non fire personnel intrusion into area. 10/4: Daily tasks within the Missions are static at this point and no changes to DRA were made.

Incident Transition Plan

- **Staffing that will transition:**

NOTE: R indicates a Riverside Resource order and B indicates a Beachie Cr. resource.

| Name | O # | Qualification | Cell | LWD | Current Assignment |
|-------------|------|---------------|--------|-------|--------------------|
| Steve Davis | 469R | SOF2 | (b)(6) | 10/15 | Branch II |
| Mike Starr | 468R | SOFR-t | | 10/16 | Branch III * |
| Bob Habeck | 516B | SOF2 | | 10/10 | Branch I* |

* NOTE: Bob Habeck is mentoring Mike.

- **Recommended future staffing:** At a minimum we recommend one per Branch. There are no orders pending for additional safety officers.
- **Ongoing investigations and/or reviews:** None.
- **OSHA relationships:** OSHA has not been present on this incident.
- **Evacuations and contingencies:** Refer to the Liaison Officer report.
- **Fatigue management issues:** Work-rest ratios were adhered to, or completely mitigated. We did have a smattering of minor issues (rashes, blisters, digestive upset, etc.) that can be interpreted as of indication of normal wear and tear at this phase of the season.
- **Non-operations risk assessments and mitigations employed:** We recognized that COVID-19 was one of many risks we faced on the fireground and we purposefully provided logistical support for tactical operations and ICP functions while practicing CDC recommendations for physical distancing, facial coverings, screening, etc. to prevent and slow the potential spread of COVID for the incident. This informed the deliberate risk assessment, like any other risk, but did not distract or overshadow other potential items of concern.
- **Safety summary including causal factors and mitigation measures employed:** Refer to table shown above: this does not include every hazard, but highlights areas with the most exposure.
- **Daily conference calls:** The Pacific Northwest Fire Operations Safety and Risk Management Conference Call occurs daily at 0930 PDT. Call number is 888-844-9904 with a passcode of: (b)(6)
Call length depends upon the fire activity level, but averages 30 minutes.

The purpose of the call is to provide incident information, open dialogue, and rapid information sharing across the geographic area as it relates to fire operations safety, health and risk management on incidents, incident personnel and local units.

Agenda

1. Team SOFR Report
 - i. Introduction/Name of SOF giving report/Current Incident Update
 - ii. Number of Personnel, SOFRs, and EMTs/other medical personnel
 - iii. Injuries/Illness/Events (including COVID)
 - iv. Safety/EMS critical resource needs and potentially excess resources
 - v. Trending issues or events
 - vi. What's going well regarding strategic risk assessment?
2. Unit Safety Officer Report/Updates
3. GACC/MAC Safety/Risk Information
4. Go Backs/Discussion
5. Closing

Incident Transition Plan

- **Important Safety Contact Information:** Mt Hood NF Forest Safety Officer: Justin Neville (b)(6) Justin would like to be contacted for any IWI to facilitate staffing Hospital Liaisons, if needed.
- There is a Google Voice number listed in the IAPs for Safety: 971-236-2152 To administer and adjust the list of phone numbers this virtual number will link to log in to:
<https://voice.google.com/about>
username: (b)(6)
password: (b)(6)

3. Information

PNW3 staffed the Riverside Fire with 7 PIOs (one was virtual for the first 3 days). When taking command of the Beachie Creek Fire, 12 additional staff were incorporated into the organization. Nine of the 12 were employees local to the Willamette National Forest. At the peak, the Information area functioned with 18 PIOs on-site. At the time of transition, there will be 12 PIOs staying with the fire. Six of those are local to the Willamette National Forest and an additional PAO support person from the Forest. One of the 12 is focused on audio visual production and special projects working with the Planning section. By Monday October 12 there will be 4 remaining PIOs. Additional PIO's are on order with 1 fill as of 10/5.

The information function was set-up to fulfill the following tasks: Incident Fire Information Operations, Media Relations, and Trapline / Community Relations. No new accounts were created, instead PNW3 adopted the same Riverside and Beachie Creek Fire Information Center phone numbers, email, Facebook and Inciweb pages created earlier for each of the fires.

- **Recommended future staffing of Information Function:**

| PIOs | Location – Branch (task)s |
|------|--|
| 2-3 | Team Leadership |
| 2 | ICP – (Office & Media Functions) |
| 4 | ICP - Community Outreach (Trapline – 3 traplines. (2 daily for Beachie Creek daily and 1 on Riverside visited twice per week) |

3. Information - Riverside

- **Information center locations:** Riverside and Beachie Creek Fire Information Center is located at the Chemeketa Community College Salem Campus ICP. Riverside Fire ICP was located at Sam Barlow High School until September 26.

The following accounts remain active for the Riverside fire.

- **Riverside Public Information Phone Number:** 509-228-7805 (Phone lines are forwarded to a single number)
- **Public Information email:** 2020.Riverside@firenet.gov
- **Riverside Facebook:** www.facebook.com/RiversideFireInfo
- **Twitter:** @fire_riverside / PW: RiversideFire2020 – Not updated since Info shops merged

Incident Transition Plan

- **YouTube Channel:** riversidefirevideos@gmail.com / PW RiversideFire2020
- **Riverside Inciweb:** <https://inciweb.nwcg.gov/incident/7174/> - Mt Hood National Forest
- **Flickr** (Not used since 9/23) Flickr.com/photos/riversidefire2020 / PW: RiversideFire2020
- **Key talking points, past, present, and future:**
 - Daily talking points and background fire information (single product for both fires) can be found in the FireNet information Channel [2020 ORMHF Riverside](#) (Information Channel/files/Talking Points & Key Messages)
 - Vegetation is drying at higher elevations and fire activity has increased. Smoke associated with more fire activity in the Dead Horse Mountain area was visible Sunday.
 - The indirect line between Beachie Creek and Lionshead Fires, creates containment opportunity should further action be needed to prevent fire spread to the east toward Warm Springs.
 - Precipitation is forecasted beginning later in the second week of October. This could potentially end any sustained fire growth.
 - Steady progress is being made with the suppression repair work. Examples include installation of waterbars and clearing debris from roadside ditches and culverts.
 - Firefighters are patrolling along the edge of the fire and extinguishing heat as it is found.
 - Firefighters continue to assist local fire departments with response to 911 calls. Call numbers have been decreasing.
 - In heavy fuels, logs, stumps, duff, sheltered areas and unburned islands expect the fire to continue to smolder, creep and produce smoke.
 - Palm IR work is ongoing on the north side of Riverside Fire
 - People intending to hike into, or near, the fire area should remain alert and aware of their surroundings at all times.
 - Stay up to date on weather forecasts and closure information.
 - Expect to encounter firefighter traffic, dusty roads, and areas of smoke. Staying alert and aware of surroundings is very important.
 - Campfires are now allowed in campgrounds and dispersed campsites on the Willamette NF as of October 2. Chainsaw use is prohibited 1pm-8pm and there is a 1-hour fire watch following use.
- **Recommended tasks:** Participate in Cooperator's meetings, utilize trapline, combined Daily Update, Spanish translation, Inciweb updates to both fire sites, Facebook posts to both incident FB pages. The Forest POA's and Agency Administrators have asked to review the Daily update prior to posting. A community briefing of both fires was recorded and posted to Facebook on October 1. Another is planned for Tuesday October 6.
- Trapline on the Riverside Fire is being visited every fourth day with laminated QR code sheets to transfer information to the public. The trapline includes 5 stops and from ICP is a total of 100-mile round trip. A complete list of Riverside trapline stops and documents can be found at: [2020 ORMHF Riverside](#) (Information Channel/files/Community Branch/ Trapline information)

Incident Transition Plan

- **American Sign Language** – 503-932-8460 National Interpreting Service
schedule@nationalinterpretingservice.org
- **Political considerations:**
 - Concern from the communities of Dowdy and Estacada with questions about “tactical pause” from Fedor Zarkhin at the Oregonian. Clackamas County and ODF also receiving questions on the “tactical pause”.
 - The Ripplebrook community and Timberlake Job Corps Center are popular areas of interest and concern to many public visitors and within the Forest Service at the local, regional and national level, communicate with Forest before posting information on these areas.
 - The community of Estacada has members that have expressed clear distrust of firefighters and asked for them to vacate some private lands.
 - There is some public that feels the firefighters have overstayed their welcome.
- **Relationships with local agencies and news outlets (print and electronic):** Low media interest overall. Media contacts can be found at: [2020 ORMHF Riverside](#) (Information Channel/files/Contacts) and a record of media can be found at [2020 ORMHF Riverside](#) (Information Channel/files/media monitoring)
- **Trends:** Low media attention, very few questions and phone calls coming in daily. Average of three media interviews or line visits per week. Messaging has shifted to safety when returning to areas impacted by fire, and prevention.
- **Daily conference calls:** 0900 Region 6 Public Affairs / Public Information Officer Call – Rachel Pawlitz is the contact – rachel.pawlitz@usda.gov or (b)(6)
1030 Lionshead, Holiday Farm, Beachie Creek, Riverside Coordination Teams call – Celeste Prescott will provide the invitation.

3. Information – Beachie Creek

- **Information center locations:** Riverside and Beachie Creek Fire Information Center is located at the Chemeketa Community College Salem Campus ICP.
The following accounts remain active for the Beachie Creek Fire.
 - **Beachie Creek Public Information Phone Number:** 541-583-0526 (phone lines are forwarded to a single number)
 - **Public Information email:** 2020.BeachieCreek@firenet.gov
(BeachieCreek@gmail.com / PW: DefensibleSpace2020 is forwarded to the FireNet account)
 - **YouTube:** BeachieCreek@gmail.com Password: DefensibleSpace2020
 - **Beachie Creek Facebook:** www.facebook.com/BeachieCreekFire2020
 - **Inciweb:** <https://inciweb.nwcg.gov/incident/7001/> - Willamette National Forest
- **Key talking points, past, present, and future:**
Daily talking points and background fire information (single product for both fires) can be found in the FireNet information Channel [2020 ORMHF Riverside](#) (Information Channel/files/Talking Points & Key Messages)
See above (Riverside Fire Section) for Talking Points for Monday October 5, 2020
- **Recommended tasks:** Participate in Cooperator’s meetings, utilize trapline, combined Daily Update, Spanish translation, Inciweb updates to both fire sites, Facebook posts to both incident FB pages. The Forest POA’s and Agency Administrators have asked to review the Daily update prior to posting. A community briefing of both fires was

Incident Transition Plan

recorded and posted to Facebook on October 1. Another is planned for Tuesday October 6.

- Trapline on the Beachie Creek Fire is being visited daily with updates from Riverside, Beachie Creek and Lionshead Fires. The trapline includes two different lines: east- 10 stops and 100 miles / southwest- 10 stops and 80 miles. The trapline along highway 22 serves a community without internet access and needs to continue. A complete list of Beachie Creek trapline stops and documents can be found at: [2020 ORWIF Beachie Creek](#) (Information Channel/files/Community Relations Outreach/ PNW3)
- **American Sign Language** – 503-932-8460 National Interpreting Service schedule@nationalinterpretingservice.org
- **Political considerations:** Communities of Lyons, Mill City, Gates and Detroit impacted heavily, FEMA, Red Cross and insurance companies working in place to support the communities.
 - Forest concerns about access and accuracy of progression map as it displays a single fire growing rather than multiple starts growing together. Forest talking points are available on this topic.
 - The Opal Creek Wilderness, Bull of the Woods Wilderness, Elkhorn area and recreation points along the Little Northfork Santiam river corridor are popular areas of interest and concern to many public visitors and within the Forest Service at the local, regional and national level, communicate with Forest before posting information on these areas.
- **Relationships with local agencies and news outlets (print and electronic):** Low media interest overall. Media contacts can be found at: [2020 ORWIF BeachieCreek](#) (Information Channel/files/External Contacts Call Center and Media) and a record of media can be found at: [2020 ORWIF BeachieCreek](#) (Information Channel/files/media monitoring)
- **Trends:** Low media attention, very few questions and phone calls coming in daily. Average of three media interviews or line visits per week. Messaging has shifted to safety when returning to areas impacted by fire, and prevention.

4. Liaison

- **Staffing, by agency, of Agency Representatives:** PNW Team 3 will be leaving behind Robert Mitsuyasu LOFR (t). Robert is a local resource who is available until October 13th.
- **Major issues expressed by Agency Representatives, by agency:** The Agency Administrators communicated clear leaders' intent to maintain and improve relationships with local Cooperators, government agencies and the public.
- **Opportunities for improved relations:** We could have created a better relationship with both Emergency Management Offices. Our inability to obtain better structural lose/damage information was limited by the lack of personal contact with those offices.

5. Ground Operations - Riverside

- **Current strategy and the anticipated probability of success:** A combination of two strategies were implemented for the Riverside Fire.

Incident Transition Plan

- In areas outside of the federal wilderness boundaries and where deemed acceptable, the current strategy is to monitor, patrol and mop up to the point deemed necessary to prevent escape. Probability of success is high.
 - Within wilderness boundaries and in areas geographically difficult to access, the fire edge is monitored by air as is deemed necessary. Type I rotor wing are being used to check fire growth in all indirect areas until a season ending weather event develops. Probability of success is moderate.
- **Tactical successes:**
 - The use of Palm IR to detect heat adjacent to values at risk
 - Strategic use of aircraft
 - Contracting with Lions Head Fire for specific suppression repair operations on Divisions OO/PP/QQ.
- **Tactical barriers:** Road system designs and driving time to access the fires edge was a tactical barrier impeding the timely response of resources being used for direct line mop up operations.
- **Cooperator responsibilities, accomplishments to date, and future needs:** ODOT is snagging and felling trees and snags of concern along state-maintained roads. These operations will be ongoing. PGE is snagging primary and secondary lines to reestablish electrical services within the fire area. Additionally, dam assessments and repairs to hydraulic infrastructure is ongoing. Snagging operations will be ongoing.
- **Specialized equipment on-scene and needs for the future:** The use of various forms of heavy equipment including graders, feller bunchers, processors and tracked drum chippers to establish indirect line was successful, however limited use is anticipated in the future. The use of palm IR was successful, and operations should continue on private nonindustrial lands, as well as private industrial land as determined necessary.
- **Safety risk assessments and operational mitigations:**
 - The use of aircraft was intensively assessed against the risk of fire growth. Each mission was evaluated on pilot exposure, probability of mission success, threat to values at risk and overall operational strategic success.
 - Shift lengths were reduced on the line to mitigate driving distances.
 - Hotel rooms were utilized for operational resources due to smoke and then rain.
- **Cost containment opportunities:**
 - Limiting aircraft use to only what is necessary to hold indirect line and suppress threats to direct line. Confidence and timing of a season ending event should be taken into consideration in consultation with Operations, ICs and AAs.
 - Right sizing the operational organization to meet operational needs daily was an effective cost containment measure that should continue.
- **Supervisory recommendations during transition:** Maintaining clear boundaries between suppression repair and rehabilitation/recovery will be key to emphasize early, to prevent mission creep throughout the incident.
- **Coordinating needs with adjoining zones or incidents:** Communication and coordination with Lions Head and Beachie Creek resources may be necessary at times for operations in and around Detroit, the Bull of the Woods Wilderness, and along the southern perimeter of the Riverside Fire.

Incident Transition Plan

5. Ground Operations – Beachie Creek

- **Current strategy and the anticipated probability of success:**
A combination of two strategies were implemented for the Beachie Creek Fire.
 - Direct control lines or cold trailing was used to control perimeter where possible. Probability of success is high.
 - In areas geographically difficult to access, monitoring the uncontrolled perimeter by air as deemed necessary; checking fire spread strategically with aircraft to limit fire growth. Probability of success is moderate.
- **Tactical successes:**
 - The use of Palm IR to detect heat adjacent to values at risk
 - Strategic use of aircraft
 - The ability to use Canadian resources
- **Tactical barriers:**
 - Long travel time to access the fires edge
 - Extensive uncontrolled fire edge in remote wilderness areas with limited access and extensive snag component
 - Geographic extent of fire
- **Cooperator responsibilities, accomplishments to date, and future needs:** ODOT is felling trees of concern along state-maintained roads. These operations will be ongoing. PGE is felling trees on primary and secondary lines to reestablish electrical services within the fire area. Additionally, dam assessments have been completed. Tree felling operations will be ongoing. Coordination with ODF and Industrial landowners to facilitate logging operations.
- **Specialized equipment on-scene and needs for the future:** The use of various forms of heavy equipment including graders, feller bunchers, and processors to gain access to the fire perimeter and construct fire line was successful; however limited use is anticipated in the future. The use of palm IR was successful, and operations should continue on private nonindustrial lands, as well as private industrial land as deemed necessary.
- **Safety risk assessments and operational mitigations:**
 - The use of aircraft was intensively assessed against the risk of fire growth. Each mission was evaluated on pilot exposure, probability of mission success, threat to values at risk and overall operational strategic success.
 - Shift lengths were reduced on the line to mitigate driving distances.
 - Hotel rooms were utilized for operational resources due to smoke and rain.
- **Cost containment opportunities:**
 - Limiting aircraft use to only what is necessary to hold indirect line and suppress threats to direct line. Confidence and timing of a season ending event should be taken into consideration in consultation with Operations, ICs and AAs.
 - Right sizing the operational organization to meet operational needs daily was an effective cost containment measure that should continue.
- **Supervisory recommendations during transition:** Maintaining clear boundaries between suppression repair and recovery will be key to emphasize early, to prevent mission creep throughout the incident.
- **Coordinating needs with adjoining zones or incidents:** Communication and coordination with Lions Head and Riverside resources may be necessary at times for operations in and around Detroit, the Bull of the Woods Wilderness, and along the northern perimeter of the Beachie Creek Fire.

Incident Transition Plan

5a. Air Operations

- **Recommended future staffing for Aviation Branch:** Recommended staffing would include an AOBD, ASGS or trainee, no ATGS, and essential helibase personnel. The helibase is consolidated for both the Riverside and Beachie Creek fires. ATGS if needed can be ordered through dispatch.
- **Aviation facility locations (past, present, and future) and capabilities including current issues and future use opportunities. Includes fixed and rotor wing bases, dip sites, re-load bases, portable retardant plants, FAA towers, etc.:** The helibase is currently located just SE of Silverton along a private airstrip. This site cannot be used past Oct 12 and will most likely need to be vacated earlier if more than ¼ inch of rain is forecast. Prior to consolidating the aircraft in Silverton, the Riverside fire used Hood River airport. Approved dip and helispot sites are currently identified on the Air Ops map.
- **Utilization of current assigned fleet:** Current utilization of aircraft on the incident consists of recons and water drops.
- **Past and existing Temporary Flight Restrictions including number(s):** Riverside currently does not have a TFR. The last TFR was 0/9267 which was released end of shift on 9/25.
- **Safety risk assessments and operational mitigations:** The fire does not have a TFR. Due to the fire burning numerous structures and destroying infrastructure systems, numerous entities have been flying the fire. These entities consist of insurance companies, utility companies, news and magazine organizations, timber companies, and other government organizations.
- **Operational successes and issues:** Combining the two incident helibases into a single helibase allowed a better communications flow as well as decreasing the number of scarce helibase management personnel needed for daily operations.
- **Working relationships with cooperators including states and the military:** Working relationships with cooperators has been good. The Oregon National Guard hoist ships last day was 9/30.
- **Communication frequency management and recommendations:** Currently the air-air frequency for both fires is the same. This was implemented because of the low number of flights and the incident aircraft working both fires. This allowed the pilots to limit the number of channels they had to monitor.
- **Special operations missions on-going or planned:** There are no on-going or special missions planned at this time.
- **Daily conference calls:** At this time there are no daily Aviation Conference calls. The last call was 10/2.

6. Plans

- **Currency and status of WFDSS or other Agency Administrator strategic direction:** The last decision for Beachie Creek was published on was 9-14-2020 and the last decision for Riverside was published on 9-23-2020. See Section H of this document for Organization Assessment.
- **Status of planning cycle successes and barriers:** Planning cycle begins with an 0700 briefing and concludes with an 1800 Planning Meeting.

Incident Transition Plan

- **ICS-209 Reporting arrangements:** See Situation (6a) for details.
- **Recommended future staffing for Planning Section:** PNW8 will need a moderately staffed Planning Section.
- **Status of planning facilities including equipment (copiers, etc):** JA Copy Service has been plotting maps, and printing products. They can be reached at JAcopyt15@gmail.com There are two floor model copiers in Building 7 outside the Plans Room (108) that are available for use as well.
- **Status of incident documentation:** Agency administrators have requested all documentation be provided electronically. Viewer access could be granted to non-federal agency partners to allow them to access the E-doc box for sharing of records.
- **Cooperators involvement in planning meetings:** No Cooperators have participated in the Planning Meetings although there is an extensive Zoom invite list which includes Cooperators so some Cooperators may be viewing the Planning Meeting via Zoom.
- **Resource (Advisor) issues, concerns, and opportunities:** There are several Lead Resource Advisors on the fires. The resource advisors have been active in the coordination of the suppression repair work being performed by operation resources and documented by situation.
- **Interagency Resource Representative contacts:** N/A
- **Daily conference calls:** There are no daily conference calls for Plans at this time.

6a. Situation Unit

- **Brief description of fuels and fire behavior:** See attachment labeled "FBAN Transition Plan_Riverside_Beachie Creek fires"
- **Status of mapping capabilities including GIS:** The Situation Unit has been submitting the ICS-209 by 1900 through the FAMWEB process. The Dispatch Office for entering the ICS-209 is Eugene Interagency Communications Center and the approved ICS 209 is electronically submitted to the Northwest Coordination Center (NWCC). If the ICS-209 needs to be emailed due to FAMWEB issues, please use the following emails: ornwc_mcco@firenet.gov; ornwc_intel@firenet.gov; and intell@blm.gov

In addition, the ICS 209 is being emailed to various individuals email accounts. A current list will be provided to incoming team. In addition to the ICS-209 an Incident Priority Worksheet (IPW) worksheet is submitted daily to ornwc_mcco@firenet.gov and Instructions and worksheet can be found at https://gacc.nifc.gov/nwcc/admin/nw_mac.aspx.

The Situation Unit is utilizing NIROPS infrared technology to determine fire perimeter and acreage. Daily requests for the IR are placed the NIROPS website. The A# is being requested Eugene Interagency Communications Center (541-225-6400) for Beachie Creek. Please check IR documents for Sensor Operator information.

The Situation Unit consists of 1 qualified SITL, 1 SITL (t), 2 qualified GISS, 2 GISS (t) and 3 FOBS and 1 FOBS(t). A copy of GIS base data, incident data, products, and projects, as well as any AGOL feature service, tile packages, and documentation of workflow will be provided to incoming GISS/SITL.

Incident Transition Plan

- GIS file structure is stored and accessed using one drive: the documents folder under the Situation channel for each fire.
- Pdf products and analysis are being completed using ArcGIS Pro. Incident data editing is following the National Incident Feature Service workflow.
- Nightly map order printing is being done by JA copy trailer.
- Maps are exported as both images for printing and georeferenced pdfs for use in field navigation apps to accommodate printing needs and field use needs.
- FTP storage: Map products (PDFs) are stored on FTP in the corresponding fire's products folder.
- QR code folder: In addition, all georeferenced pdfs for both fires are accessed using one QR code that points to the Beachie Creek/GIS/Current Maps folder on FTP. After the team assumed command of both fires, all products were combined to this folder for ease of use.
- Some map products have been combined to show both fires, for example the Briefing map, Suppression Repair tiles, and Air Operations. Some products continue to be produced for each individual fire, for example the Incident Action Plan, Transportation, and Operations maps. Some maps are being produced individually for both fires and are not being updated unless there are significant changes, for example the Public Information Map, Ownership, and Progression.
- Data is being collected in the field using Collector. Data collected is feeding the National Incident Feature Service. Depending on which incident they started on, people are using either the Riverside map, the Beachie Creek map. Some READs are using maps that were created for them on their local units—Mt Hood or Willamette READs groups. All of these maps use the National Incident Feature Service.
- ArcGIS Online has been used to produce a Public Information Riverside story map, and a Beachie Creek story map (in progress).

- **Status of Fire Weather Meteorologists & equipment:**
RAWS

There are two IRAWS deployed to the Riverside and Beachie Creek Fires. RAWS Technicians from BOISE have the cases for the IRAWS. Contact: 208-387-5726

Riverside - IRAWS 20 – Antenna Farm (4292 feet)

▪ 45.131250 N -122.291306 W

Beachie Creek - IRAWS 49 – Butte Creek (1582 feet)

▪ 44.994944 N -122.583361 W

Permanent RAWS used for weather observations

Jordan RAWS (742 ft), Horse Creek (3402 ft), Red Box (3250 ft), Boulder Creek (3570 ft)

Weather Support from Portland NWS – 503-326-2420

Fire Weather Briefings from the NWS Portland - 940 AM

Incident Transition Plan

- Daily through October 12th
- After October 12th: Monday through Friday till further notice
 - [https://global.gotomeeting.com/join/\(b\)\(6\)](https://global.gotomeeting.com/join/(b)(6))
 - [+1 \(872\) 240-3212](tel:+18722403212)
 - Access Code: [\(b\)\(6\)](#)
- Briefings are recorded and posted to:
<https://www.weather.gov/pqr/FireWxRecording>
- Spot weather Forecasts can be submitted:
<https://www.weather.gov/spot/request/>

6b. Resources Unit

- **Brief description of data base including currency:** The team used two eISuite enterprise databases (Riverside and Beachie Creek) to track resources.

The IAP was produced in Microsoft Word and 215 prep was done on plotted 204s.

The team continued with established QR code check-in with great success. The check-in spreadsheet is located under Riverside teams' resources channel.

An electronic version of the IAP is being emailed from 2020.riverside.resources@firenet.gov account to all interested party email list. The list can be found on Riverside and Beachie Creek teams under Riverside Plans channel.

All Resource Unit documents are available in *2020_ORMHF_Riverside* and *2020 ORWIL Beachie Creek team folder under resources* on teams for both fires.

6c. Demobilization Unit

- **Current status of Demobilization Plan:**
 - The Riverside Incident Demobilization Plan was approved on September 17, 2020.
 - The Beachie Creek Fire Demobilization Plan was approved on September 24, 2020.
- **Demobilization issues, concerns and opportunities:**
 - Opportunity: The Demobilization Unit maintained a positive working relationship with the Columbia Cascade and Eugene Expanded Dispatch offices. This facilitated demobilization of resources in e-ISuite, release of resources in IROC, and efficient procurement of airline flights for resources.
 - Issue: The e-ISuite database needed to be edited due to incomplete or incorrect data for many resources. The Demobilization Unit Leader worked with Resource Unit Leaders, Status/Check-in Recorders, and Fire Apprentices to clean up the data to leave an accurate database for the incoming incident management team.
 - Challenge: In addition to the Riverside Fire, the Team took over management of the Beachie Creek Fire early in the assignment, creating a challenge of

Incident Transition Plan

having two databases in e-ISuite. The Unit and the Team were able to keep the resources of the two fires distinct while integrating them to achieve the objectives of the incident.

- Opportunity: Quick Response (QR) codes were used for numerous functions on the fire including check-in and demobilization. Being a fairly new technology, its use can be further refined to enhance the virtual check-in and demobilization procedures.

6d. Documentation Unit

- **Status of documentation:** The official incident electronic records retention files (eDoc Box) are currently located in the Teams account for each fire located in the General Channel>eDocBox. All effort was made to maintain two separate, but equal eDoc Boxes for Riverside and Beachie Creek Fires. While copies of documents exist in both boxes they have been uniquely named for each fire.
- Finance has complete control of their records and the retention of those records. No financial information was managed or filed outside of the Finance Section.
- The documentation package contains no Human Resource nor Medical records that have protected information included.
- At time of transition all documents have been scanned and placed in appropriate folders in the eDoc Box. As each Forest has asked for electronic records retention only, the paper copies and paper doc boxes are simply for storage prior to destruction by the local unit.
- Documentation Unit Contacts:
Beachie Creek:
Kim Mushrush
Willamette National Forest – FOIA Officer
Located at Eugene Dispatch
541-225-6400
kim_mushrush@firenet.gov

6e. Training

An incident training specialist trainee reported to Beachie Creek ICP on 09/23/2020 and began tracking and facilitating incident training assignments. He assumed responsibility of Riverside trainees on 09/28/2020 when the PNW3 team assumed command of Beachie Creek. Prior to his arrival, training assignments were tracked and facilitated through other planning section staff on both teams. The incident training specialist trainee will time out 10/07/2020 concurrently with the PNW3 team. At the time of this summary:

- 211 trainees were checked-in to Beachie Creek and Riverside fires.
- 175 of those resources were ordered as trainees.
- 108 trainees have initiated training assignments with the incident training specialist.
- 34 trainees have been recommended for agency certification by their evaluator.

The primary method of tracking trainees has been through the e-ISuite database. Trainees with open assignments will remain open in the database. A QR code check-in

Incident Transition Plan

form for trainees was published in the IAP starting 09/30/2020. This proved to be an effective way of capturing trainee information and facilitating contact between the incident training specialist and trainees. The link to this form will be broken on 10/07/2020 because it exists outside of the incidents Microsoft Teams framework.

7. Logistics

Riverside

- **Current and future facility locations:** Mill Staging 760 Hwy 224, Estacada, OR is housing approximately 11 folks.
- **Recommended future staffing for Logistics Section:** N/A
- **Successes and barriers in working with expanded dispatch:** Expanded was good to work with, there were no issues with working with Columbia Cascade Dispatch.
- **Equipment and supply shortages to meet operational objectives:** At this time there are no shortages at the Redmond Cache.
- **Communications capabilities and barriers:** N/A
- **Applicable supplemental foods policy:** N/A
- **Daily conference calls:** Upon PNW3 arrival there was a daily conference call with Area Command Team, the last day of the conference call was 10/1/20

Beachie Creek

- **Current and future facility locations:** Beachie Fire ICP is located at Chemeketa Community College 4000 Lancaster Drive NE, Salem, OR. The college footprint works well, and will be available until February with some reduction of footprint as more school programs open. LUA S-280 Rehab of the college facility should include standard janitorial service including carpet cleaning.
- **Successes and barriers in working with expanded dispatch:** Expanded was good to work with, there were no issues with working with Eugene Dispatch.
- **Equipment and supply shortages to meet operational objectives:** At this time there are no shortages at the Redmond Cache.
- **Communications capabilities and barriers:** N/A
- **Applicable supplemental foods policy:** N/A
- **Daily conference calls:** Upon PNW3 arrival there was a daily conference call with Area Command Team, the last day of the conference call was 10/1/20

7a. Facilities - Riverside

- **Issues with current facilities:** No issues with the land use for either Timber park or Mills Staging. Weather may have some impact; however, most of the property is paved at Mills Staging.
- **Status of camp help arrangements:** There are no camp crews assigned to the Riverside.
- **Existing land use agreements and needs:** Mills Staging (S#109) 50-100 acres for staging heavy equipment and weed wash station. Timber Park (S#383) used for drawing water for the weed wash station located at Mills Staging. Iron Crown Helibase (S#451) was ordered on Riverside; however, the location is in Silverton, OR on the Beachie Creek Fire. All resources ordered for the Iron Crown Helibase are filled under Beachie Creek Fire.

Incident Transition Plan

- **Status of shower, laundry services:** There are no shower facilities or laundry services because the majority of resources are on per diem or live locally.
- **Camp safety issues:** No safety issues known.

7a. Facilities – Beachie Creek

- **Issues with current facilities:** The Chemeketa Community College Fall classes and athletics have begun; therefore, there are students attending courses in Building 8. Beginning Wednesday October 7th, practices will be conducted in the gym located in Building 7 and in the baseball, softball and soccer fields. The Athletic Schedule is a separate document attached. Fire Team planning, C&G and other meetings have been redirected to meet in Building 5, Operations and Resource Room upstairs. The Contacts for the CCC are: John McIlvain at (b)(6) Emergency Management Coordinator; David (b)(6) Custodial Supervisor; and 24hr Security (b)(6) (b)(6)

A portion of the Green parking lot is flagged for the students attending classes in building 8, southeast end. In addition, Saturdays and Sundays, the entire south Green parking lot is reserved for the College to conduct a motorcycle riding course. There is a track in the parking lot; therefore, it needs to be clear of all vehicles prior.

The far south field is open for the Canada Team to camp and park, to allow for the Athletics program to begin practicing in the fields. There is a small flagged between the softball and soccer fields for overflow crew camping.

There are signs throughout the fire camp to slow traffic. The College EMC has expressed the Fire Protection Way Rd remain open to the public; therefore, it is slightly difficult to keep the public from entering the camp.

The Chemawa Indian School is a dormitory for crews and overhead to lodge. There are two floors to each dorm separating men downstairs and women upstairs. At this time, there are only two dorms we are allowed to occupy: Winona and McNary. Monday through Friday from 0700 to 1500, the dorm is staffed by the school Dorm Manager, Ted Mack (b)(6). Afterwards, it is the fire teams' responsibility to staff and lock the dorm at night to prevent unauthorized public entry; 1500hrs to 2200. On Saturday and Sundays, the fire team is responsible for janitorial and staffing from 0700-2200hrs. See separate pocket folder for Chemawa Indian School contacts and documents.

- **Status of camp help arrangements:** There are 3 camp crews: Timber Lake Crew (C#43) 7 total, Columbia Basin (C#44) 10 total; and R & R Contracting (C#42) 10 total. The Timber Lake Crew have 1 member assisting Communications. Both the Timber Lake Crew and the Columbia Basin will be demobing on Friday October 9th. The R & R Contracting Crew arrived October 4, 2020 and is shadowing both camp crews on Dorm and ICP responsibilities.
- **Existing land use agreements and needs:**
 - Chemeketa Community College (S#280)
 - City of Salem (S#320 and S#321) - Potable and Greywater disposal @ Chemeketa Community College.

Incident Transition Plan

- Chemawa Indian School (S#272) – Sleeping Location for Crew, Engines and Camp Crews.
- City of Gates (S#185) – Staging Area ½ acre adjacent to HWY 22.
- Upward Bound Camp (S#184) -Original ICP
- Kimmel Park Mills Staging (S#812)
- North Santiam School District (S#383) – for parking lot use only
- Frank Lumber Company (S#406) – Equipment Staging
- **Status of shower, laundry services:** Grayback Shower (S#5) located at ICP with 18 shower stalls. No Laundry services available.
- **Camp safety issues:** Public are able to walk and drive onto the premises.

7b. Food Unit - Riverside

- Meals provided by ICS from Beachie Creek to Mill Staging, lunches, 2 hot/cold beverage containers of coffee and ice daily. It is picked up at 0630 and delivered by 0800 by Ground Support from Beachie Creek. In an effort to minimize trips IAP's and Maps are picked up at Plans by Ground Support from Beachie Creek ICP at 0615. Staging, LSC3(t) Tom Thompson (b)(6) calls FDUL daily if there are any changes.
- Lunches meet contract specifications.
- Water, sports drinks and ice are provided at Beachie Creek ICP

7b. Food Unit – Beachie Creek

- ICS is the onsite Caterer at Chemeketa Community College with Manager Heather Cucinotta. This kitchen had the capability to feed 2500.
- The food is excellent and timely. Salads are great, the second salad is handmade by a company off site which helps with variety.
- All water, Gatorade and ice is purchased locally by the buying team. These items are purchased on “an as needed” basis. No standing orders. Grease disposal is handled by the caterer. The signed invoices are being emailed from caterer to FDUL and then FDUL sends to Finance electronically 2020.beachiecreek.finance@firenet.gov.
- Mill Staging—receives lunches, ice, 2 hot/cold beverage containers of coffee and IAP's from ICP. These items are picked up daily... IAP's at plans by 0615 and the food items are picked up at the reefer by 0630 to be delivered to Staging by 0800. The camp crew helps load these items. Ground support has a standing order. LSC3(t) (Tom Thompson (b)(6)) calls FDUL daily if there are any changes.
- Reefer is a Type I (E-68) reefer, owned by Boulder Ridge LLC. A Shift Ticket has been started by facilities.

7c. Ground Support - Riverside

- **Safety considerations:** Fall seasonal weather conditions can be hazardous at this time of year, creating dense fog and difficult driving conditions during much of the day. Typical hazards associated with urban traffic present. Daylight hours are becoming shorter and fall rains can be expected to impact driving conditions as well.
- **Travel times for operations personnel:** Travel time to Helibase is approximately 30 minutes, remainder of access points on west side of fire are 30-60 minutes

Incident Transition Plan

- **Equipment considerations (graders, rentals, buses, carts, etc.):**
As of 10.3.2020 we have:
 - 6 NERV rental vehicles, all checked out to incident personnel
 - 1 UTV rental checked out to incident personnel
- **Environmental considerations (wash stations etc):** N/A
- **Spike camp considerations:** 1 weed wash at Mills Staging.
- **Access and travel management considerations:** N/A

7c. Ground Support – Beachie Creek

- **Safety considerations:** Fall seasonal weather conditions can be hazardous at this time of year, creating dense fog and difficult driving conditions during much of the day. Typical hazards associated with urban traffic present. Daylight hours are becoming shorter and fall rains can be expected to impact driving conditions as well.
- **Travel times for operations personnel:** Travel time to Helibase is approximately 30 minutes, remainder of access points on west side of fire are 30-60 minutes
- **Equipment considerations (graders, rentals, buses, carts, etc.):** As of 10.03 we have:
 - 4 NERV rental vehicles, 2 are available, 2 are checked out to incident personnel.
 - 3 UTV rentals, 1 checked out, 2 available
 - 2 golf carts checked out for use at ICP
 - 1 Fuel Tender at ICP
 - 1 Weed Wash Station at ICP
- **Environmental considerations (wash stations etc):** N/A
- **Spike camp considerations:** N/A
- **Access and travel management considerations:** Closures along HWY 20 increase travel time east to west across/around the fire.

7d. Supply Unit - Riverside

- **Status of resource ordering (reconciliation):** Orders for local supplies, crews, & equipment are being sent via email.
- **Ordering processes with expanded dispatch including local purchase procedures:** Email Columbia Cascade Expanded Dispatch at waccc_expanded@firenet.gov (206-516-9996). Expanded hours are from 0700 – 1900. PNW3 starting S# 393

For local purchases, we are using a single ad-hoc buying team for both incidents. For some local purchases, an email containing a Waybill will be sent to 2020.beachiecreek.ordering@firenet.gov. Upon receipt, print the Waybill and call Porfino at (b)(6). Porfi will pick up the Waybill, go to the store to pick up the supplies, deliver to supply, and then bring the signed Waybill back to Ordering. Ordering will then email the signed Waybill to helmut.kreidler@usda.gov.

- **Shortages/excesses of supplies to meet operational objectives:** The supply cache at ICP will be downsized to conform to a Type 2 organization. The Forklift will not be demobed upon transition.
- **Use of caches:** Cache orders are going straight to Northwest Fire Cache via email to northwestfirecache@gmail.com (Hector (b)(6)) – Start Time 0730). 100,000

Incident Transition Plan

block of S#s. Line Orders are emailed to 2020.riverside.ordering@firenet.gov or by calling the SPUL.

- **Delivery times:** Cache Orders place in afternoon about 1400 arrive the next day. Buying Team makes multiple deliveries daily.
- **Supply Unit staffing arrangements (Job Corps, AD's, etc.):** 1 GS ORDM located at ICP and 1 GS RCDM(t). Both fires share 1 SPUL & 1 Contract Crew C-17 Mosqueda Reforestation Inc. located separately in the same location. Contract crew rotates personal on R&R, so only a few are off at any time. Can be extended indefinitely.

7d. Supply Unit – Beachie Creek

- **Status of resource ordering (reconciliation):** Orders for local supplies, crews, & equipment are being sent via email.
- **Ordering processes with expanded dispatch including local purchase procedures:** Email Eugene Interagency Communication Center Dispatch at oreic_expanded@firenet.gov (541-225-6462). Expanded hours are from 0700 – 1900. PNW3 starting S# 920. For local purchases, same as Riverside
- **Shortages/excesses of supplies to meet operational objectives:** N/A
- **Use of caches:** Cache orders are going straight to Northwest Fire Cache via email to northwestfirecache@gmail.com (Hector (b)(6) – Start Time 0730). 100,000 block of S#s
Line Orders are emailed to 2020.beachie.supply@gmail.com or by calling the SPUL.
- **Delivery times:** Cache Orders place in afternoon about 1400 arrive the next day. Buying Team makes multiple deliveries daily.
- **Supply Unit staffing arrangements (Job Corps, AD's, etc.):** 1 GS ORDM located at ICP, 1 GS RCDM(t) and 1 Contractor RCDM(t). Both fires share 1 SPUL & 1 Contract Crew C-17 Mosqueda Reforestation Inc. located separately in the same location. Contract crew rotates personal on R&R, so only a few are off at any time. Can be extended indefinitely.

7e. Communications - Riverside

- **Issues, concerns, opportunities with existing system(s):** The existing command system on the Riverside Fire consists of five command repeaters linked together on a single net. There are no known coverage issues that need to be resolved. All sites with the exception of Whaleshead are drive in sites. The road to Whaleshead currently has several miles of the road covered with down trees. There are currently no plans to reopen the road soon. There was one incident of destructive interference on the L18 link repeater. The NIFC CDO and the FCC are involved with locating the source. We have not had any further instances of this interference nor any resolution.

There is a Helibase near Silverton. Air to Air communications is supported via an aircraft link which is located at House Mountain.

Getting RADO and COMT orders filled has been a challenge. There is currently adequate staffing for the next week.

- **Status of fire line communications:** There are no known coverage issues that need to be resolved.

Incident Transition Plan

- **Status of camp to town communications including cell phone and hard line:** Internet connectivity is being supplied by Chemeketa Community College.

There are currently 20 Verizon CERT Cell phones assigned to the Riverside incident. Contact for return is Chandler Martello (b)(6)

7e. Communications – Beachie Creek

- **Issues, concerns, opportunities with existing system(s):** The existing command system on the Beachie Creek Fire consists of five command repeaters linked together on a single net. All sites are drive in sites.

There was a burn over of the initial ICP and two of the radio sites. Three 4281 Command Tac radio kit boxes with two radios and one 4244 with several radios were destroyed. The residual radios are being collected in banker's boxes for return to NIFC. Also one Aircraft Link 4370-043 S172.7 was destroyed. There is currently a Command repeater 4312-C007 S172.5 located at the Stoney Ridge site that is not functioning. The road to the site is not passable and there is no plan to reopen that road. All loss and damage reports have been filed with NIRSC and all non-electronic damaged items have been disposed of.

There is a Helibase near Silverton. Air to Air communications is supported via an aircraft link which is located at House Mountain.

Getting RADO and COMT orders filled has been a challenge. There is currently adequate staffing for the next week.

- **Status of fire line communications:** There are no known coverage issues that need to be resolved.
- **Status of camp to town communications including cell phone and hard line:** Internet connectivity is being supplied by Chemeketa Community College.

7f. Security

- **Major security issues (non-confidential):**
 - Public trespassing in Closure Area
 - Public in ICP and Fire Camps
 - Maintain roadblocks
 - Periodically checking closure areas on the Willamette and the Mt. Hood National Forests
- **Contingencies:**
 - Maintain Security
 - ICP
 - Heli-Base (Silverton)
 - Forest Closures
 - Roadblocks on the Riverside/Beachie Creek fires
 - Help in Road Closure Signing and Barricades.
- **Cooperators:**
 - Marion County Sheriff's Department
 - Linn County Sheriff's Department

Incident Transition Plan

- USDA Forest Service Law Enforcement
- **Roadblocks**
 - Riverside Fire
 1. Hillockburn Gate FS road 45
 2. Hwy 224/FS 4610
 3. FS 4614/4615
 - Beachie Creek Fire
 1. Molalla Gate
 2. Hwy 22/French Creek 2225
 3. Hwy 22/Breitenbush Road 46
 4. Forest Boundary North Fork Road
 5. Hwy 22/Straight Creek

Continue with roadblock staffing and security patrols in the closures.

7g. Medical Unit

- **Facility Location(s):** The Medical Unit is located at the Chemeketa Community College, Building 62 at the Beachie Creek ICP.

The Beachie Creek ICP Facility was staffed daily from 0600-2100. Medical Staff were in camp to provide services for in-camp emergency and transport of the sick and injured. All Divisions had medical personnel on the line with them during operational periods.

During PNW3's tenure on the incidents there were 40 visits to the medical unit. Line medical personnel provided minor care on the line and numbers not reflected in this unit count. Most visits were blisters and rashes.

There will be approximately 2 ½ field first aid containers with various supplies left at transition time. There is also 1 Line Medic and 5 ALS ambulances, 3 oxygen kits, 1 SKED, and 1 trauma kit.

To date there have been no known or suspected cases of COVID-19.

- **Staffing/Resources that will transition:**

| Name | E/O # | Qualification | Leader | LWD | Current Assignment |
|--------------|-------|---------------|-----------------|-------|-----------------------------|
| Ambulance 9 | 233R | EMPF | Dan Chandler | 10/14 | Br I: DIVS AA/ZZ |
| Ambulance 4 | 200B | EMTF | Jeff Checketts | 10/17 | Br II: DIVS R/W |
| Ambulance 5 | 100R | EMPF | Erik Ronning | 10/15 | Br II: DIVS A |
| Ambulance 10 | 1R | EMPF | Tiffany Howard | 10/11 | Br III: DIVS CC/FF/KK/MM |
| Ambulance 20 | 97R | EMTF | Tamera Richards | 10/12 | Br III: DIVS CC/FF/KK/MM |
| Medic 26 | 600B | EMTF | Braden Harris | 10/16 | Br III: DIVS CC/FF/KK/MM |

Incident Transition Plan

7h. Computer Services - Riverside

- All SmartSource rentals except iPads were returned to Columbia Dispatch when PNW3 transitioned to Beachie Creek. The iPads were shipped directly to SmartSource on 10/2/2020 from Beachie Creek once the field iPads were returned.
- There are two office copiers that were relocated Beachie ICP from Riverside. The move was performed by the vendor.
- Verizon MiFi's were also relocated from Riverside to Beachie ICP.

7h. Computer Services – Beachie Creek

- **Network:**
 - **Building 7**
 - Most sections are using a PNW3 Team WiFi bubble. It is in place to enable wireless printing. Communications is using a MiFi.
 - The team network consists of:
 - A router in Plans
 - Four deployed Access Points
 - Everyone can access the college WiFi; college has freely advertised the password, however printing is not possible hence the team network setup.
 - The IT room is located in Racquetball Court #5. The only outlets are located outside the door
 - Long extension cords and power strips are needed for most rooms; PNW3 is willing to exchange in kind
 - There are two college provided switches
 - 1 in GIS - GIS is hardwired to the college network
 - 1 in Training/DOCL – currently disabled
 - **Building 5**
 - Using the college WiFi which does allow wireless printing
 - A single access point is located in the PIO office to address some bandwidth latency issues
 - All offices in Building 5 are sharing a network printer centrally located in the hall
 - **Medical**
 - Using a MiFi to print wirelessly
 - College WiFi can be used but the MiFi is needed to facilitate printing
 - **Supply**
 - Using a MiFi
 - College WiFi is not accessible
 - **Ground Support**
 - Using college WiFi
 - **Security**
 - Using MiFi
 - College WiFi speed fluctuates over an operational period
 - **College WiFi:**
 - Name: (b)(6)
 - Password:

Incident Transition Plan

- **S drive:** located near Check-In. It is made available to individuals to scan in their signed time sheets. Finance pulls the electronic copy over the network. The previous team set up and we continued to use.
 - **Drive:** S
 - **Folder:** \\FIRE406097\Scans
 - **Username:** admin1
 - **Password:** admin

8. Finance

- **Status of documentation (Finance Package):** Microsoft Teams (2020_ORMHF_Riverside & 2020_ORWIF_Beachie_Creek) is being used. All files are kept electronically. The fires were set up originally with two different file structures. There is no hard copy financial documentation box.

e-ISuite Enterprise version is being utilized for all financial tracking. The two databases (Riverside & Beachie Creek) have been kept separate due to each fire having it's own unique cost share agreements.

Two firenet email addresses (2020.riverside.finance@firenet.gov & 2020.beachiecreek.finance@firenet.net) are being monitored and information posted in e-ISuite and filed in MS Teams.

Two Verizon phones have been secured for the Finance Section. They will stay with the next team. Riverside Fire phone number (206) 735-0068. Beachie Creek Fire phone number (206)735-6532.

- **Agency Incident Business Advisor(s) assigned:** The Incident Business Advisor is Tracey Nimlos. She can be reached at (b)(6) or via email at tracey.nimlos@usda.gov.
- **Land Use agreements in effect or needed:** Current signed Land Use Agreements that have not been closed out include:

Riverside

- S-109 - RSF Forest Products (Heavy Equipment Staging Area)
- S-383 - Timber Park Staging (Staging & Drafting Water)
- S-451 - Harold Krueger (Helibase)

Beachie Creek

- S-185 - City of Gates (Vehicle Inspection Site)
- S-272 - Chemawa Indian School (Day and Night Sleeping)
- S-280 - Chemekata Community College (ICP)
- S-307 - Albany Municipal Airport
- S-383 - North Santiam School District (Staging Area)
- S-404 - Howell Prairie (Helibase)
- S-406 - Frank Lumber Co, Inc
- S-767 - Weyerhaeuser
- S-768 - Repeater Move
- S-812 - Kinniel Paarl Mills City (Staging)

Incident Transition Plan

- **Daily conference calls:** The PNW GACC holds IMT Incident Business conference calls on Monday, Wednesday, and Friday at 1100. The call in number is 888-844-9904. Passcode (b)(6)

The Incident Business Advisor holds daily MS Teams calls at 1500. She will send you an invite.

- **Status of cost containment efforts and relevant documentation:** Costs are up to date for both databases within e-ISuite. Cost notes are available in the MS Teams shared drive and will be discussed with the incoming Cost Unit Leader.

Cost containment efforts include utilizing Lionshead resources to complete work on the NE side of the Riverside fire. These efforts saved costs for an additional spike camp and/or hotel and per diem for the Resources completing this work.

- **Recommended future staffing for Finance Section:** Finance will be leaving an EQTR, PTRC (t) & COMP (t) that can post time. These individuals plus the incoming teams rostered Finance section will likely be adequate for continuing the tracking of these two separate incidents. Total personnel between the two incidents are less than 400 people.

8a. Cost Unit

- **Status of cost collection mechanisms and daily reports:** Cost reports have been prepared daily and forwarded to Agency Administrators, INBA, & Regional Incident Business Specialist.

Both fires have Cost Share Agreements in place. This information will be provided to the FSC and Cost Unit Leader.

8b. Time Unit

- **Summary of equipment and personnel time issues, barriers:** Due to the two different MS Teams file structures, we kept two separate Time Units, one per Incident. During the height of demobilization of Resources, it proved easier to keep timekeepers in individual incidents to learn and work in one file structure.
- **Work/rest issues/documentation:** There were no excessive shifts during PNW3 tenure on the Riverside and Beachie Creek fires.
- **Equipment and personnel time reconciled with resources unit and Incident Action Plan:** When PNW3 took command of the Beachie Creek fire, it was communicated to Operations to order Resources based on which fire the Resource was expected to be working on. It was also clearly communicated to keep lend/leasing of Resources between the two fires to a minimum. Operations was able to accommodate this request, therefore there was no need to track Resources using the IAP.

8c. Compensation for Claims

- **Outstanding claims and/or Compensation for Injury cases:** The COMP (t) will time out on 10/10/2020. A process has been established for completing replacement requests. The INBA must review all replacement requests.
- **Potential claims and mitigation measures to avoid:** Because of the ICP turnover at Gates, there may be potential claims from contracted resources for items

Incident Transition Plan

lost/destroyed at that time. The Contracting Officers for all equipment have been notified.

8d. Procurement Unit:

- **Status and location of Buying Team(s):** An Adhoc Buying Team is in place virtually. Ladette Armstrong and Holly Hansen are supporting both fires.
- **Status of contract inspectors:** Contracts were largely not inspected prior to PNW3's arrival. Two PNW3 ICPI's inspected incoming equipment as well as any other equipment onsite that could be track down. A list of inspected equipment will be provided to the incoming team.

Incident Transition Plan

F. OVERHEAD RESOURCES REMAINING

1. Command: (IC's, all command staff, Agency Representatives, and HRSP staff)

| Position | Name (last, first) | Resource Order # | Location | Planned Demob |
|--------------------|---------------------|------------------|----------|----------------------|
| Information | | | | |
| PIO1(t) | Brentwood Reid | 397 | ICP | 10/12 |
| PIOF(t) | Kellianne Ricks | 398 | ICP | 10/12 |
| PIOF2(t) | Tim Jones | 335.82 | ICP | 10/11 |
| PIOF(t) | Emma Vasilj | 524 | ICP | 10/09 |
| THSP | Emily Chudek | Local | ICP | 10/10 |
| PIOF(t) | Erin Phillips | 521 | ICP | 10/10 |
| PIOF(t) | Amy Borba | 522 | ICP | 10/10 |
| PIOF(t) | Homan Hamedanizadeh | Local | ICP | 10/10 |
| PIOF(t) | Randy Pyle | 581 | ICP | 10/13 |
| PIOF(t) | Sarahi Felix | 527 | ICP | 10/17 |
| N/A | Claire Bennette | 528 | ICP | 10/5 |
| PIO2(t) | Joanie Schmidgall | Local WIF | ICP | Not assigned to fire |
| | | | | |

2. Operations (Ground):

| Position | Name (last, first) | Resource Order # | Location | Planned Demob |
|--|--------------------|------------------|----------|---------------|
| A Glidepath report will be given to PNW8 Ops | | | | |
| | | | | |

3. Operations (Aviation):

| Position | Name (last, first) | Resource Order # | Location | Planned Demob |
|--|--------------------|------------------|----------|---------------|
| Refer to Helibase Aviation Resource Tracking spreadsheet at Helibase | | | | |
| | | | | |

3a. Aircraft:

| Type | Tail Number | Resource Order # | Location | Planned Demob |
|------|-------------|------------------|---------------------|---------------|
| 1 | 471CH | A-56 R | Iron Crown Helibase | unknown |
| 1 | 6979R | A-56 B | Iron Crown Helibase | unknown |
| 2 | 223HT | A-11 R | Iron Crown Helibase | unknown |
| 3 | 7HE | A-13 R | Iron Crown Helibase | unknown |
| 3 | 352TA | A-8 B | Iron Crown Helibase | unknown |
| | | | | |

Incident Transition Plan

4. Plans:

| Position | Name (last, first) | Resource Order # | Location | Planned Demob |
|----------|--------------------|------------------|----------|---------------|
| DMOB | Morgan, Ed | O-366 | ICP | 10-11-20 |
| DOCL | Kosiorowski, Joey | O-396 | ICP | 10-11-20 |
| GISS | Slatton, Russ | O-408 | ICP | 10-14-20 |
| SITL(t) | Kendall, Ben | O-400 | ICP | 10-12-20 |
| SCKN(t) | Forsyth, Makensie | O-430 | ICP | 10-12-20 |
| SCKN(t) | Henderson, Will | O-431 | ICP | 10-12-20 |
| | | | | |

5. Finance:

| Position | Name (last, first) | Resource Order # | Location | Planned Demob |
|-----------------|--------------------|------------------|----------|---------------|
| COMP (t) | Knuth, Kathleen | O-352 | ICP | 10/10/2020 |
| PTRC/EQTR | Mondor, TerrieLynn | O-427 | ICP | 10/10/2020 |
| PTRC (t) | Priebe, Nancy | O-603 | ICP | 10/16/2020 |
| | | | | |
| EQTR (en route) | Hahn, Sandra | O-602 | ICP | 10/19/2020 |
| | | | | |

6. Logistics Personnel:

| Position | Name (last, first) | Resource Order # | Location | Planned Demob |
|----------|---------------------|------------------|-------------------|---------------------------|
| LSC3(t) | Reid, Carson | O-486 | Logistics | 10/17 POV |
| RCDM(t) | Hernandez, Sharon | O-389 | Supply | 10/10 POV |
| RCDM(t) | Leis, Mark | O-579 | Supply | 10/13 POV |
| FLOP | Severs, Jason | O-44 | Supply | 10/18 POV |
| RCDM(t) | Chong, Siloam | C-17 | Supply | End of Fire POV crew swap |
| CAMP | Cisneros, Francisco | C-17 | Supply | End of Fire POV crew swap |
| | | | | |
| GSUL | Michael Dunn | O-336 | Beachie Creek ICP | 10/7/2020 |
| GSUL | Tom Maffeo | O-590 | Beachie Creek ICP | 10/11/2020 |
| GSUL(T) | Eric Turbeville | O-572 | Beachie Creek ICP | 10/15/2020 |
| EQPI | Larry Stein | O-574 | Beachie Creek ICP | 10/15/2020 |
| EQPM(T) | Travis Lanka | O-412 | Beachie Creek ICP | 10/15/2020 |
| Driver | Guyanne Charon | E-107 | Beachie Creek ICP | 10/8/2020 |
| Driver | Barb Roof | E-106 | Beachie Creek ICP | 10/11/2020 |
| Driver | Laurita Slape | E-123 | Beachie Creek ICP | 10/13/2020 |
| Driver | Jerry Barney | E-104 | Beachie Creek ICP | 10/11/2020 |
| Driver | Laura Wells | E-103 | Beachie Creek ICP | 10/9/2020 |
| Driver | Zachery Fitch | E-121 | Beachie Creek ICP | 10/12/2020 |
| Driver | Casey Morris | E-122 | Beachie Creek ICP | 10/12/2020 |
| Driver | Gordon Stokes | O-407 | Beachie Creek ICP | 10/8/2020 |
| | | | | |
| COMT(T) | Anderson, Jason | O-383R | ICP | 10/9/20 |
| COMT | Dombrowski, Anthony | O-580B | ICP | 10/14/20 |

Incident Transition Plan

| Position | Name (last, first) | Resource Order # | Location | Planned Demob |
|--------------------------------|--------------------|------------------|---------------------|------------------|
| RADO(T?) On loan from JobCorps | Alcantara, Ernesto | O-043R | ICP | 10/10/20 |
| RADO(T) | Donoghue, Cynthia | O-394R | ICP | 10/11/20 |
| RADO(T) | Fortune, Steven | O-405R | ICP | 10/19/20 |
| RADO | Darnall, Joshua | O-584B | ICP | 10/17/20 |
| | | | | |
| | | | | |
| SEC2 | Wilds, James | O-440 | ICP | October 10, 2020 |
| THSP | Schmigelsky, Sarah | O-514 | Heli-base | October 8, 2020 |
| THSP | Benedek, Kaitlyn | O-135 | ICP | October 8, 2020 |
| THSP | Jensen, Andrew | O-334 | ICP | October 8, 2020 |
| SEC2 | Richey, Jared | O-592 | Rover | October 16, 2020 |
| THSP | Kanoho, Glen | O-599 | Roadblock Beachie | October 18, 2020 |
| THSP | Garcia, Edgar | O-395 | Heli-base | October 8, 2020 |
| SECG | Delgado, Ryan | O-559 | Roadblock Beachie | October 14, 2020 |
| SECG | Massengale, Kayla | O-560 | Roadblock Beachie | October 14, 2020 |
| SECG | Gillette, Jonathan | O-561 | Roadblock Beachie | October 14, 2020 |
| SECG | Bishop, Gerald | O-562 | Roadblock Beachie | October 14, 2020 |
| SECG | Steele, Justin | O-568 | Roadblock Beachie | October 14, 2020 |
| SECG | Sheppard, Andrew | O-450 | Roadblock Riverside | October 14, 2020 |
| SECG | Losh, Calvin | O-451 | Roadblock Riverside | October 14, 2020 |
| SECG | Montrod, Chris | O-447 | Roadblock Riverside | October 14, 2020 |
| SECG | Wafa, Mousa | O-446 | Roadblock Riverside | October 14, 2020 |
| SECG | Ahmed, Nawid | O-443 | Roadblock Riverside | October 14, 2020 |
| SECG | Nesbitt, Robert | O-452 | Roadblock Riverside | October 14, 2020 |
| SECG | Hakimi, Saleem | O-444 | Roadblock Riverside | October 14, 2020 |
| SECG | Huff, Tim | O-445 | Roadblock Riverside | October 14, 2020 |
| SECG | Ahmadzai, Wali | O-449 | Roadblock Riverside | October 14, 2020 |
| SECG | Daoud, Mohammad | O-448 | Roadblock Riverside | October 14, 2020 |
| BCMG | Tannehill, Brent | O-596 | ICP | October 14, 2020 |
| CC | Fuller, Ben | C-43 | ICP | October 9, 2020 |
| CC | Fuller, Colmon | C-43 | ICP | October 9, 2020 |
| CC | Nelson, Dianne | C-43 | ICP | October 9, 2020 |
| CC | Staudt, Lisa | C-43 | ICP | October 9, 2020 |
| CC | Chudek, Emily | C-43 | ICP | October 9, 2020 |
| CC | Alcantara, Ernest | C-43 | ICP | October 9, 2020 |
| CC | Gordon, Melanie | C-25 | ICP | October 6, 2020 |
| CC | McKowen, LeAnn | C-44 | ICP | October 9, 2020 |
| CC | Goff, Devon | C-44 | ICP | October 9, 2020 |
| CC | Baker, Davidson | C-44 | ICP | October 9, 2020 |
| CC | Rollins, Trevor | C-44 | ICP | October 9, 2020 |

Incident Transition Plan

| Position | Name (last, first) | Resource Order # | Location | Planned Demob |
|----------|----------------------|------------------|----------|------------------|
| CC | Srivilay, Clint | C-44 | ICP | October 9, 2020 |
| CC | Davidson, Joseph | C-44 | ICP | October 9, 2020 |
| CC | Noonan, Connor | C-44 | ICP | October 9, 2020 |
| CC | Fukuda, Adam | C-44 | ICP | October 9, 2020 |
| CC | Gaither, Nicholas | C-44 | ICP | October 9, 2020 |
| CC | McVay, Jesse | C-44 | ICP | October 9, 2020 |
| CC | Lopez, Jaimie | C-42 | ICP | October 18, 2020 |
| CC | Castro, Christian | C-42 | ICP | October 18, 2020 |
| CC | Santos, Manuel | C-42 | ICP | October 18, 2020 |
| CC | Rodriguez, Julio | C-42 | ICP | October 18, 2020 |
| CC | Ordonez, Leobardo | C-42 | ICP | October 18, 2020 |
| CC | Vega, Ricardo | C-42 | ICP | October 18, 2020 |
| CC | Cisneros-meza, Jesus | C-42 | ICP | October 18, 2020 |
| CC | Valdez, Anastacio | C-42 | ICP | October 18, 2020 |
| CC | Orozco, David | C-42 | ICP | October 18, 2020 |
| CC | Maciel, Gerado | C-42 | ICP | October 18, 2020 |
| | | | | |

7. Logistics Equipment:

| Equipment Type | Vendor/Name/NFES # | Resource Order # | Location | Planned Demob |
|-------------------------------|-----------------------|------------------|------------------------------|---------------|
| Reefer | Boulder Ridge LLC | E 68 | Beachie Creek ICP | no |
| Caterer | ICS | E 58 | Beachie Creek ICP | no |
| | | | | |
| Fuel Tender | Triangle Oil | E-19 | Beachie Creek ICP | No |
| Weed Wash | Black Forest | E-172 | Beachie Creek ICP | No |
| Weed Wash | NW Fire Service | E-181 | Mills Staging | No |
| UTV | Top Gun | E-54 | Checked Out | No |
| UTV | Top Gun | E-55 | Beachie Creek ICP | No |
| UTV | Top Gun | E-56 | Beachie Creek ICP | No |
| Golf Cart | Top Gun | E-159 | Beachie Creek ICP/Facilities | No |
| Golf Cart | Top Gun | E-160 | Beachie Creek ICP/Facilities | No |
| UTV | Top Gun | E-157 | Checked Out | No |
| Pickup | Enterprise/NERV | E-153 | Checked Out | No |
| Pickup | Enterprise/NERV | E-155 | Beachie Creek ICP | No |
| Pickup | Enterprise/NERV | E-156 | Beachie Creek ICP | No |
| Pickup | Enterprise/NERV | E-157 | Checked Out | No |
| Pickup | Enterprise/NERV | E-238 | Checked Out | No |
| Pickup | Enterprise/NERV | E-239 | Checked Out | No |
| Pickup | Enterprise/NERV | E-240 | Checked Out | No |
| Pickup | Enterprise/NERV | E-241 | Checked Out | No |
| Pickup | Enterprise/NERV | E-242 | Checked Out | No |
| Pickup | Enterprise/NERV | E-247 | Checked Out | No |
| McCarley Repair Services/MECH | Mike McCarley | E-158 | Beachie Creek ICP | 10/11 |
| | | | | |
| Communications | See attached appendix | | | |
| | | | | |

Incident Transition Plan

| Equipment Type | Vendor/Name/NFES # | Resource Order # | Location | Planned Demob |
|-----------------------|---------------------------|------------------|----------------------|------------------|
| Keyboards | SmartSource | 5 | Various | |
| Mouse | SmartSource | 5 | Various | |
| Basic Laptops | SmartSource | 36 | Various | |
| Pro Laptops | SmartSource | *10 | Various | |
| iPads | SmartSource | 26 | Various | |
| Monitors | SmartSource | 36 | Various | |
| Plotter | A&E Imaging | **1 | Various | |
| Printer | SmartSource | 19 | Various | |
| Printer | Pacific Office Automation | 1 | Various | |
| Router | SmartSource | 1 | Various | |
| Switch | SmartSource | 1 | Various | |
| Copiers | Short Term Copier | ***2 | Various | |
| MiFi | Verizon | *6 | Various | |
| Forklift | Top Gun | E-102 | ICP-Supply | |
| Pallet Jack | Top Gun | E-175 | ICP-Supply | |
| Yert | CrewZers | E-176 | ICP | EOI |
| Yert | CrewZers | E-217 | ICP | EOI |
| HVAC | Top Gun | S-995 | ICP | EOI |
| HVAC | Top Gun | S-993 | ICP | EOI |
| Golf Cart | Top Gun | E-138 | ICP | EOI |
| Golf Cart | Top Gun | E-139 | ICP | EOI |
| Shower | Grey Back | E-100 | ICP | EOI |
| Hand Wash | 3-D | E-140 | ICP | EOI |
| Hand Wash | Premire | E-195 | ICP | EOI |
| Toilets | Best Pots | S-2 | ICP | EOI |
| F/P-H/W | Best Pots | S-3 | ICP | EOI |
| Light | Top Gun | E-105 | ICP | EOI |
| Light | Top Gun | E-118 | ICP | EOI |
| Light | Top Gun | E-119 | ICP | EOI |
| Light | Top Gun | E-196 | ICP | EOI |
| Light | Top Gun | E-197 | ICP | EOI |
| Light | Top Gun | E-215 | ICP | EOI |
| Dumpster | Pacific sanitation | S-174 | ICP | EOI |
| Dumpster | Republic Sanitation | ? | Iron Crown Heli Base | Close out of H/B |
| | | | | |
| | | | | |
| RIVERSIDE FIRE | | | | |
| Porta Potty's | Honey Bucket | S-79 | Mills Staging | |
| Foot pumps | Honey Bucket | S-80 | Mills Staging | |
| Dumpster | City of Franchise | S-308 | Mills Staging | |
| | | | | |
| | | | | |

*One Pro Laptop and MiFi was sent to remote COST, Finance Chief requested and IBA approved. COST will send back the WiFi on the 18th to the new team. The computer will returned to SmartSource directly at team transition.

**The plotter that was ordered was a T930, but the plotter that was received is a T1600.

***The second copier is provided as a backup to the first. The second copier cannot be powered on at the same as the first on the current circuit due to power constraints.

Incident Transition Plan

G. CONTACT INFORMATION

| ICS Unit | Contact Type (i.e. Co. Sheriff) | Name | Phone | Cell | email |
|-------------------|---|--------------------|--------|------|-------|
| Liaison | | | | | |
| | ODOT | Del Webb | (b)(6) | | |
| | PGE Lead | Zach Littlefield | | | |
| | Eugene Water & Electric | Chad Johnson | | | |
| | Eugene Water & Electric | Laddie Arient | | | |
| | Marion Co Sheriff's Office | Sgt Matt Wilkenson | | | |
| | EM Marion County | Kathleen Silva | | | |
| | EM Clackamas County | Nancy Bush | | | |
| | Clackamas Co.-800 meg Proj | Bjorn Morphin | | | |
| | USFS Detroit Ranger | Ashley Hom | | | |
| | OR Parks & Rec | Guy Rodrigue | | | |
| | Silver Falls State Park | Chris Gilliland | | | |
| | Marion Co. Public Works | Scott Wilson | | | |
| | Marion Co. Public Works | Ryan Engel | | | |
| | Opal Creek Ancient Forest Center | Dwayne Canfield | | | |
| | Eugene Power & Electric | Jamie Breckenridge | | | |
| | | | | | |
| | | | | | |
| Operations | | | | | |
| | Lions Head OSC | John Spencer | | | |
| | Molalla Public Works Director | Gerald Fisher | | | |
| | Ranier/Olympic RM Tree Farm | Jim Crawford | | | |
| | Ranier/Olympic RM Tree Farm | Josh Miller | | | |
| | Weyerhaeuser | Jill Bell | | | |
| | Weyerhaeuser | Mark Alsup | | | |
| | Weyerhaeuser | Jeff Neef | | | |
| | Clackamas County Sheriffs Office (deputy) | Steve Strickland | | | |
| | Weyerhaeuser | Tyson | | | |
| | Oregon State Police Sr. Trooper Fish and Wildlife | Mark Schoenborn | | | |
| | Weyerhaeuser | BLUE GATES Access | | | |

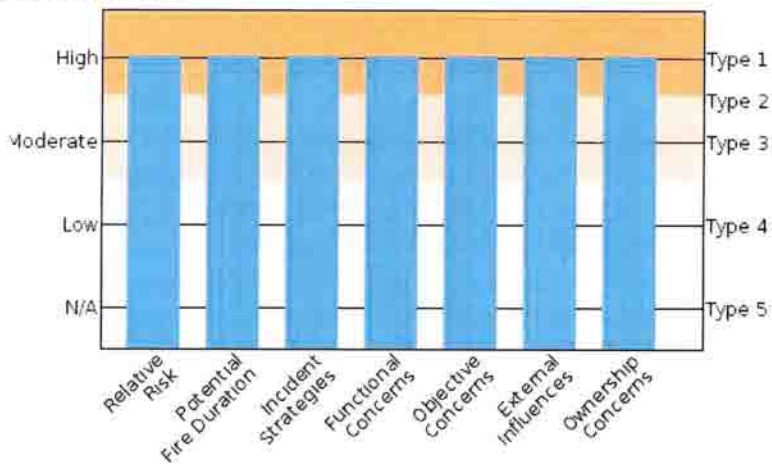
Incident Transition Plan

| ICS Unit | Contact Type (i.e. Co. Sheriff) | Name | Phone | Cell | email |
|-----------------------------|--|----------------|--------|------|-------|
| | Port Blakely Foreman (Hillock Burn Rd salvage logging) | Jeremy Zook | (b)(6) | | |
| | Mill City VFD Chief | Letand Ohrt | | | |
| | Lyons VFD Chief | Bob Johnston | | | |
| | Gates VFD Chief | Dan Benjamin | | | |
| | Aspen Tree Service | John Bamar | | | |
| | Linn County Sheriff | | | | |
| | Marion County Sheriff | | | | |
| | BLM Resources | Corbin Murphy | | | |
| | BLM Resources | Peter Kanss | | | |
| | ODF Unit Forester | Scott West | | | |
| | ODF Logging contact | Kyle Copp | | | |
| | Weyerhaeuser (DIV A) | Tyler Curtis | | | |
| | Suppression damage in private | | | | |
| | Portland Power | Shane Huston | | | |
| | | | | | |
| | | | | | |
| | | | | | |
| Logistics | | | | | |
| Security | Sheriff's Department | Marion County | | | |
| Security | USDA Forest Service | Felicia Sloan | | | |
| Security | Sheriff's Department | Linn County | | | |
| Chemeketa Community College | Custodial Supervisor | David | | | |
| Chemeketa Community College | 24hr Security | | | | |
| Chemeketa Community College | Emergency Management Coordinator | John McIlvan | | | |
| Chemawa Indian School | Dorm Manager | Ted Mack | | | |
| Chemawa Indian School | Facilities Manager | Shane Parlette | | | |
| Chemawa Indian School | Facility Administrator | Amanda Ward | | | |

Incident Transition Plan

H. COMPLEXITY ANALYSIS:

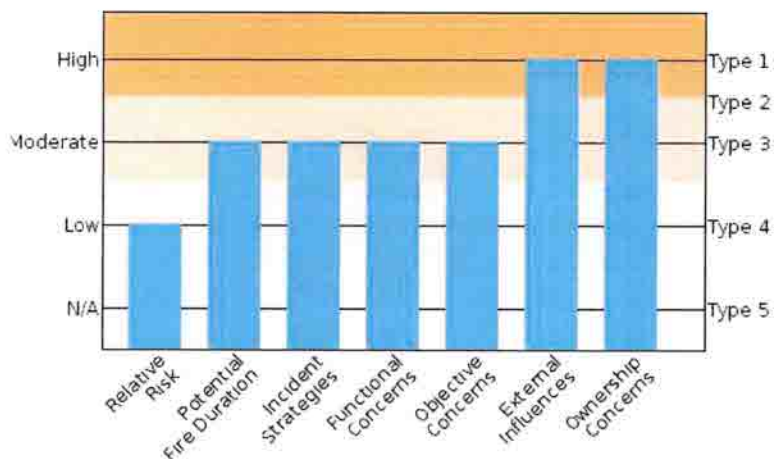
Beachie Creek



Organization Assessment

| NAME | VALUE |
|-----------------------------|----------------------|
| Unit Recommended Org Type 1 | |
| Saved By | Donaldson, Chris |
| Completed | 09/13/2020 13:02 CDT |

Riverside



Organization Assessment

| NAME | VALUE |
|-----------------------------|----------------------|
| Unit Recommended Org Type 1 | |
| Saved By | Bagnoli, Dana |
| Completed | 09/23/2020 14:47 CDT |

Fire Behavior Transition Plan

Fuels:

Both the Riverside and Beachie Creek fires are primarily comprised of western hemlock plant associations with Douglas fir being the most represented tree species. On the National forests, large areas of mature douglas fir and some medium to older plantations comprise most of the fire footprint. On the lower slopes and foothills intensively managed douglas fir plantations and clearcuts make up the rest of the fire area. Understory fuels include huckleberry, vine maple, and rhododendron.

All fuels were unseasonably dry with live fuel moistures of 90% in the live woody fuels at the start of the fire, however after the rain event that ended on 9/29 live fuels rebounded to around 111%. ERC values starting on the 29th were below 10% but have since rebounded to above 80% on 10/4. This scenario has limited fire spread and reduced fire behavior to smoldering and creeping across both incidents, although recent days have seen an increase in activity.

Energy Release Component (ERC) – a measure of seasonal fire severity based on the dryness of fuels – Keetch-Byram Drought Index (KBDI) – a measure of drought and stress on live fuels had crossed the 90th percentile on August 20th. ERC had crossed 100% prior to the wind event of 9/7-9/9.

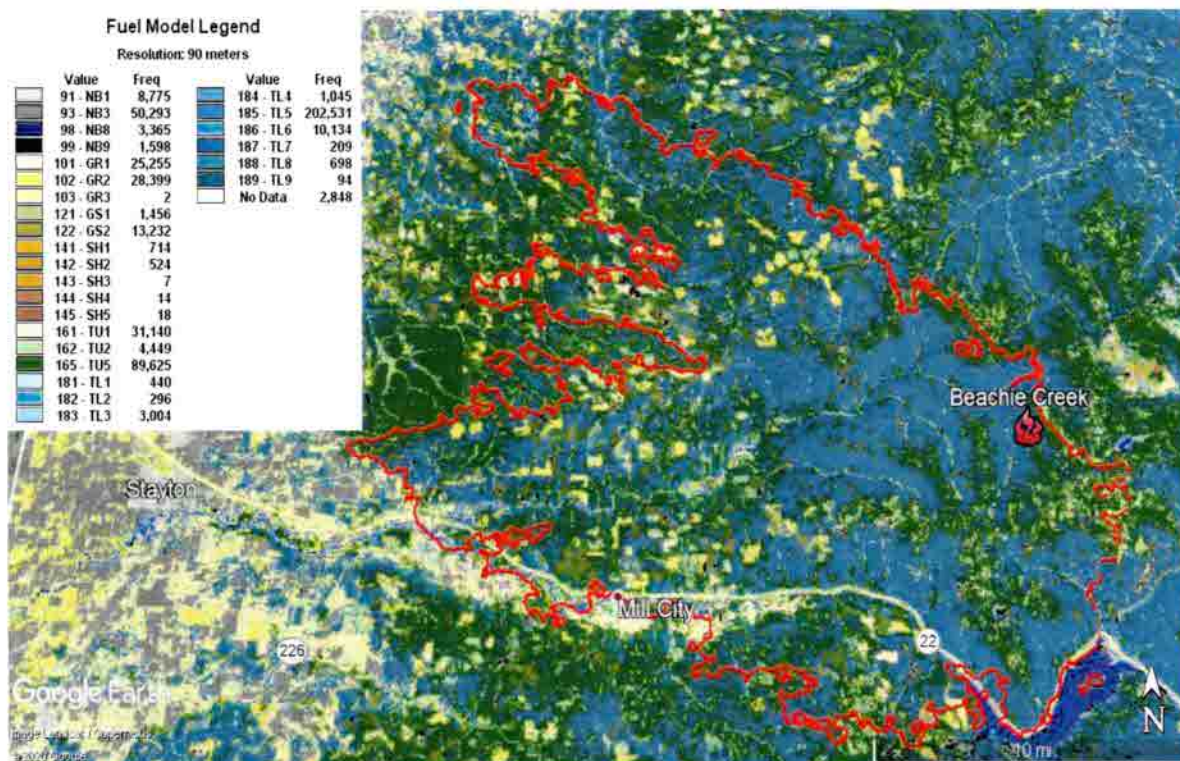


Figure 1: Beachie Creek Fuel Models

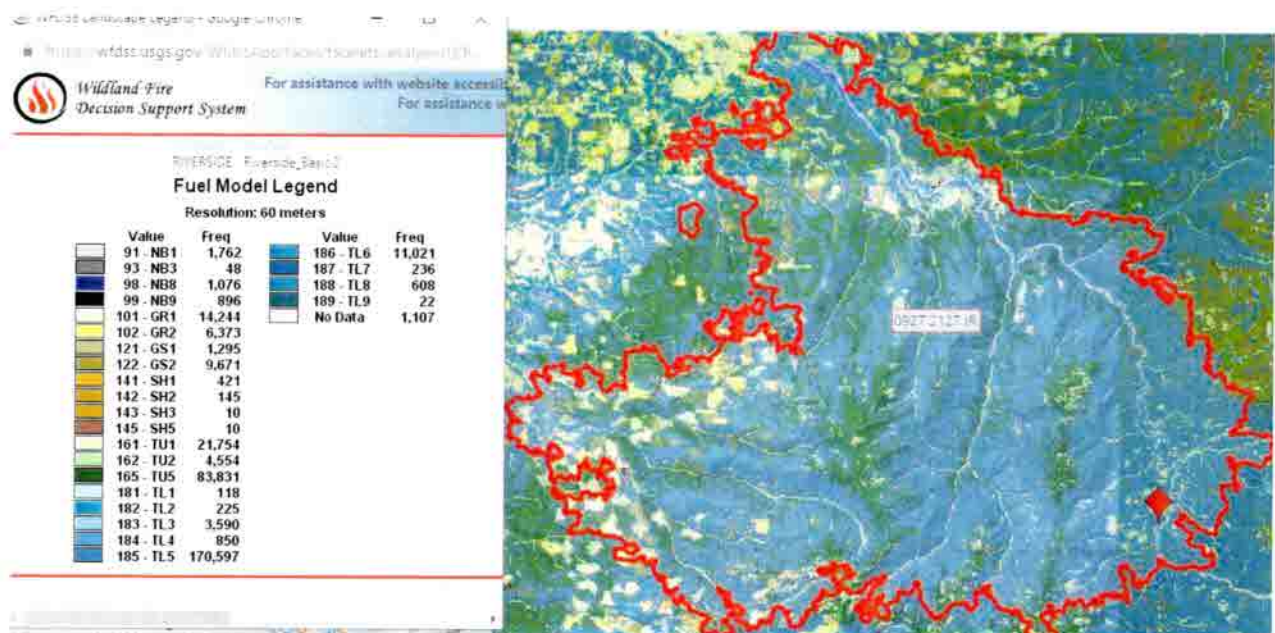
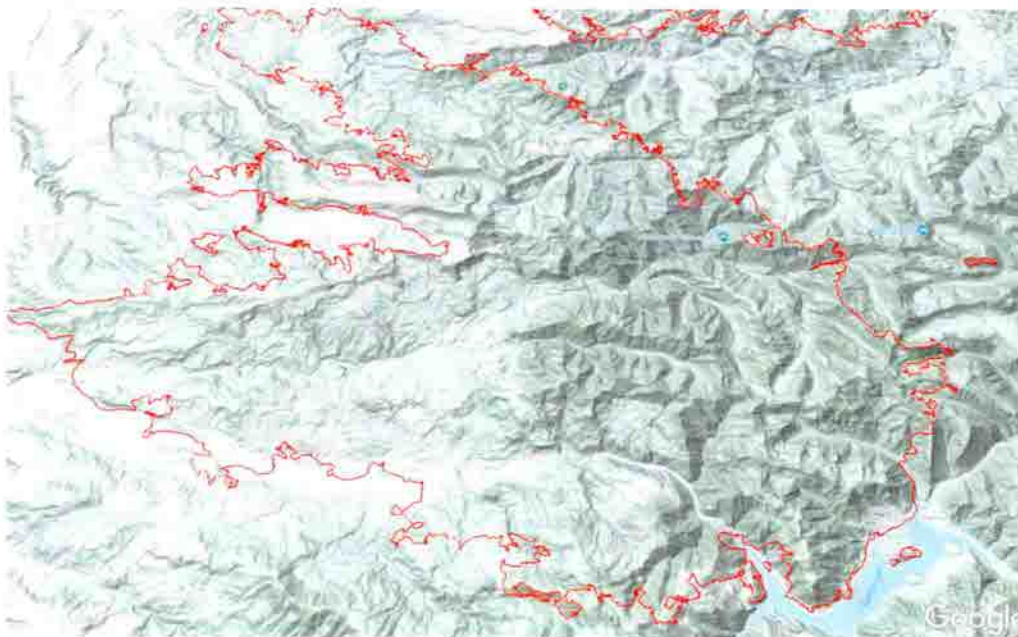


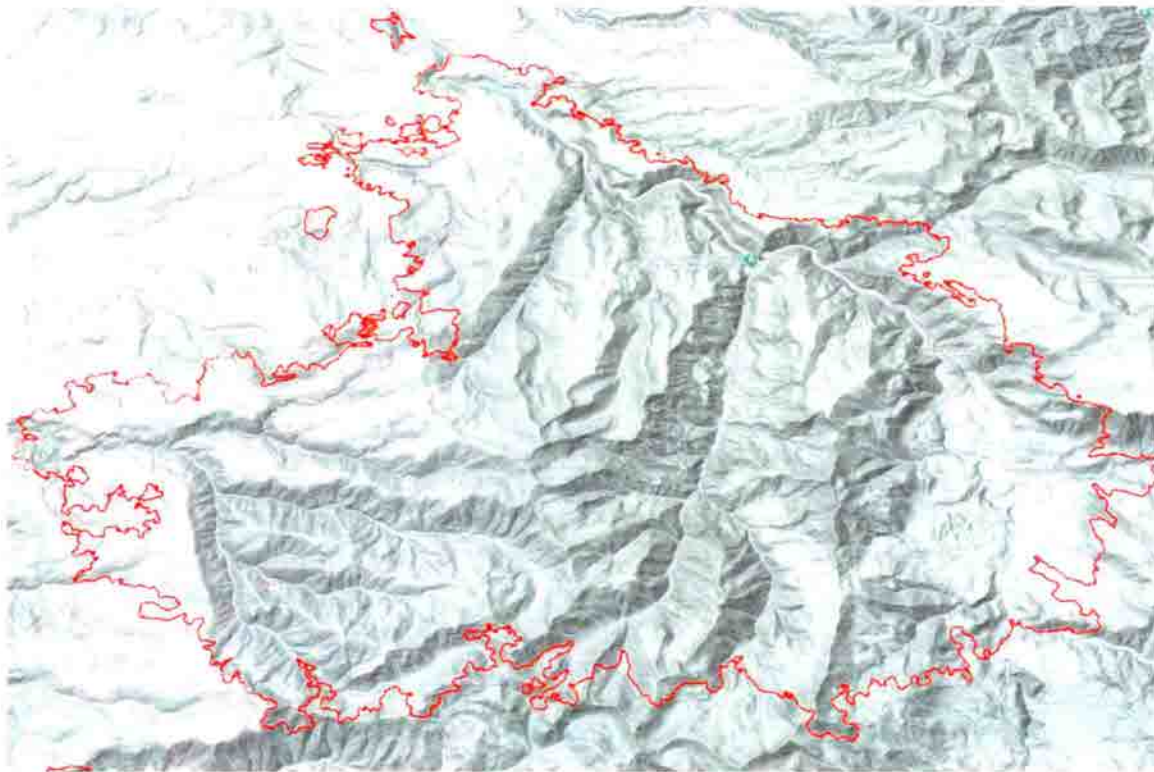
Figure 2: Riverside Fuel models

Terrain:

Generally, the elevations of the fire area range from the foothills of the Willamette Valley to near the cascade crest. Elevations on Riverside ranges from approximately 500 feet near Estacada to 3500 feet in the Roaring river wilderness. Beachie Creek ranges from 630' near Lyons on the southwestern extent of the fire up to over 5,000 feet at Rocky Top Mountain in the Santiam State Forest. The North Santiam canyon and more incised Clackamas river drainage both run generally East to West. Multiple creeks, drainages, higher elevation lakes, and isolated peaks crisscross both forests.



Beachie Creek terrain



Riverside Terrain

Fire Behavior:

The Beachie Creek Fire was detected at 11:18 the morning of August 16 on a northeastern aspect above Beachie Creek in the Opal Creek Wilderness of the Willamette National Forest. The fire was smoldering in tall timber on a 51% slope at an elevation of 3,378'

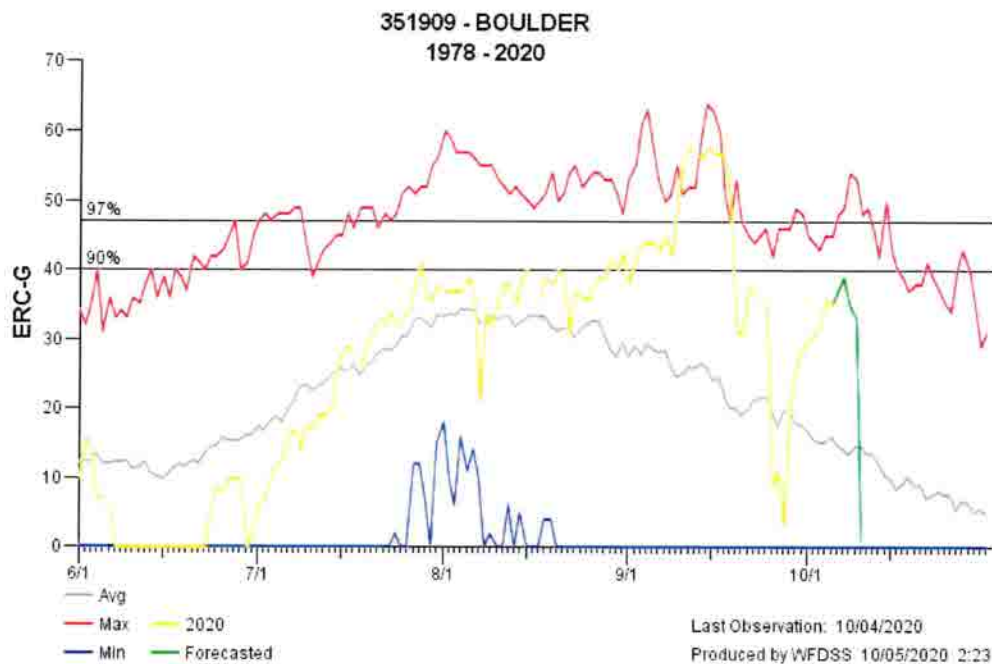
On September 5th, local meteorologists out of the Portland NWS office began warning of a potentially dangerous weather phenomena setting up which generally only occurs over the area once every 25-50 years. A very strong upper level ridge was moving north towards Alaska while an upper low south of the Aleutians was becoming part of an amplifying upper trough as jet stream energy from the Kamchatka Peninsula pushed the system east towards the Oregon coast. This is typically a winter event which brings cold, but very strong easterly winds to the area. At the same time the several large weather systems were moving towards each other from the west and north, a very strong inverted pressure trough set up along the coast as exceptionally hot weather over California expanded northward. The three air masses were predicted to impact over the fire area starting the afternoon of Monday, September 7th and extend through Wednesday afternoon on September 9th.

The Riverside fire started on September 8 near a dispersed camp site in the upper sections of the Clackamas river drainage near Ripplebrook guard station. Firefighters responded in the early morning hours of September 8, 2020 when the Riverside Fire was first reported. Driven by high winds, crews reported extreme fire growth including torching, running, and spotting fire

behavior as the fire moved 17 miles west along the Clackamas River drainage over the course of the day.

The Willamette Valley had been under a severe drought for much of the summer. This made the heavy dead and down fuels receptive to fire. The rare weather event from September 7th through 9th made this fire a wind-driven rare occurrence. Historically, large fires throughout northwestern Oregon are caused by a thermal trough along the coast, high instability, uncharacteristically dry fuels, and an elevated Haines index combining to cause plume-dominated fires which do not tend to move laterally very much. This was a very rare fire. The remainder of the 192,838 acres of the fire was accrued due to the use of indirect lines allowing fire to naturally move out of steep inaccessible areas to the containment lines over a period of several weeks.

PNW 3 assumed command of the Riverside fire on 9/25 after a significant precipitation event scattered over 4 days that brought 2-3" of rain across the fire area. Current acres were reported on IR at 138,031. Moderated weather settled over the area for the next few days bringing cloud cover, elevated humidity levels, and cooler temperatures. The fire did not experience any significant growth since 9/25 and only isolated interior smokes were observed with some areas of activity on the indirect portions of perimeter on NFS lands. Most of these hot areas are large logs, stumps interior and deep sheltered duff and logs. Most activity was subterranean smoldering and some creeping.

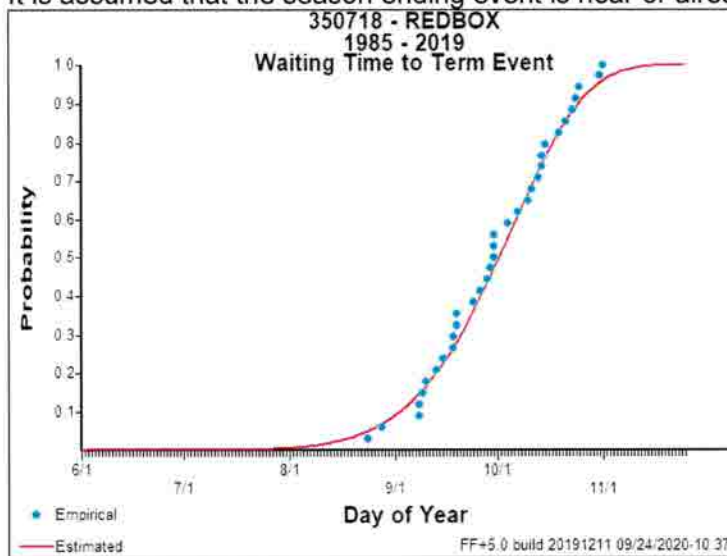


On 9/23 a spot within the Bull of the Woods was observed on the IR flight. This area was approximately 3.9 miles from the perimeter of Beachie Creek. It is currently burning in the 2011 high severity Mother lode fire scar. Fire behavior is flanking, backing surface fire less than 4 foot flame lengths. Daily spread has ranged from 4 acres on 10/2 to 60 acres on 10/4. Spread seems to be confined to unsheltered previous high severity fire footprint and has not spread into the green or north of ridgetop.



Future Spread:

The current warm and dry trend is forecast to continue until Friday 10/9 at which time a fall like pattern is predicted to bring additional precipitation. Additional perimeter growth is not expected after this rain but smoke production is likely to continue until more significant rainfall is received. It is assumed that the season ending event is near or already passed.



| Beachie Creek Inventory List- OCT 04 | | | |
|--------------------------------------|--|-----|------------------|
| NFES # | DESCRIPTION | U/I | QUANTITY |
| 0692 | BERM - CONTAINMENT, 55 GL, (1-4 DRUMS) | EA | 2 BX |
| 0606 | CAN - GASOLINE, SAFETY, 5GL, DOT APPROVED STYLE JERRI CAN | EA | 15 PC |
| 0218 | TANK, GASOLINE - 5 GL (18.9L), PUMP ADAPTED | EA | 8 PC |
| 0085 | CAN-1 GL (3.8L), GAS, AC APPROVED, SAFETY, 1A1 | EA | 4 PC & 2 In Use |
| 1880 | OIL - BAR & CHAIN, 1 GL | GL | 64 PC |
| 000741 | CONTAINER - FUEL/OIL, 2 COMPARTMENT | EA | 2 PC |
| 000341 | OIL - 2 CYCLE | QT | 10 PC |
| 007724 | 2-CYCLE ENGINE OIL 12.8 (1 PINT) | | 54 PC |
| ? | 2 CYCLE ENGINE OIL 2.6 OZ (FOR 1 GAL GAS) | | 15 PC |
| 0105 | FUSEE - SIGNAL DEVICE, HAND | BX | 1 BX (72 EA) |
| 0491 | TANK, PROPANE - FUEL, LPG, 20# TANK (5 GL) | EA | 17 PC |
| 000149 | PUMP - BARREL, HAND, W/UNLEADED NOZZLE, FOR 55 GL DRUM | EA | 1 BX |
| 000241 | TORCH - DRIP, 1 1/4 GL (4.7L) CAPACITY | EA | 27 PC OUT OF BOX |
| 006139 | HEATER, PROPANE - 20 LB TANK MOUNTED | EA | 10 PC |
| 000083 | POLE - UPRIGHT, ADJUSTABLE | EA | 2 BX |
| 000825 | STAKES - TENT, METAL | EA | 1 BX |
| 006131 | FLY - SUNSCREEN, 20' X 20', W/GUY ROPES | EA | 1 BX |
| 000070 | FLY - PLASTIC TENT, 16'X24' W/10 GUY ROPES | EA | 1 BX |
| 1238 | HOSE - SYNTHETIC, LINED, 1" NPSH X 100' | LG | 13 BX |
| 001016 | HOSE - GARDEN, SYNTHETIC, 3/4" NH X 50' | LG | 11 BX (20 E/A) |
| 1239 | HOSE - SYNTHETIC, LINED, 1 1/2" NH X 100' | LG | 19 BX |
| ? | 3" SUCTION HOSE 15' LONG | | 9 PC |
| 0115 | HOSE - SUCTION, 1 1/2" NH X 10', RUBBER, RCKR LUG COUPL, 9 NSHT/IN | LG | 1 PC |
| 000024 | NOZZLE - TWIN TIP, COMBINATION, 1" NPSH-F | EA | 2 BX (20 E/A) |
| 000259 | VALVE - WYE, GATED, 1" NPSH-F X 1" NPSH-M X 1" NPSH-M | EA | 10 BX (10 E/A) |
| 00231 | VALVE - WYE, GATED, 1 1/2" NH-F X 1 1/2" NH-M X 1 1/2" NH-M | EA | 14 BX (10 E/A) |
| 000136 | NOZZLE - GARDEN HOSE, 3/4" NH, ADJUSTABLE, BRASS | EA | 160 PC |
| 000904 | VALVE - WYE, GATED, BRASS, 3/4" NH-F X 3/4" NF-M X 3/4" NH-M | EA | 2 BX (60 E/A) |
| 000733 | REDUCER - 1" NPSH-F (11 1/2 TPI) TO 3/4" NH-M (11 1/2 TPI) | EA | 100 PC |
| 000010 | HOSE - GARDEN, SYNTHETIC, 3/4" NH X 50' | LG | 2 BX (60 E/A) |
| 002229 | REDUCER - 2 1/2" NPSH-F, 1 1/2" NH-M | EA | 5 PC |
| 002230 | REDUCER - 2 1/2" NH-F, 1 1/2" NH-M | EA | 6 PC |
| ? | 1 1/2" NPSH TO 1 1/2" NH FEMALE TO MALE COUPLER | | 30 PC |
| 000835 | VALVE - SHUT OFF, BRASS, BALL, 3/4" NH | EA | 1 BX (60 EA) |
| 000916 | COUPLING - DOUBLE MALE, 1" NPSH TO 1" NPSH | EA | 2 PC |
| 000856 | COUPLING - DOUBLE MALE 1 1/2" NH-M (9-TPI) | EA | 9 PC |
| 000710 | COUPLING - DOUBLE FEMALE, 1" NPSH (11 1/2 TPI) | EA | 10 PC |
| ? | HOSE CLAMP/ STRANGLER | | 4 PC |
| ? | 1 1/2" TO 1" TEE | | 8 PC |
| 001082 | NOZZLE - COMBINATION, BARREL, KK 1 1/2" NH | EA | 3 BX (20 E/A) |
| 001081 | NOZZLE - COMBINATION, BARREL, KK, 1" NPSH | EA | 5 BX (20 EE/A) |

| Beachie Creek Inventory List- OCT 04 | | | |
|--------------------------------------|---|-----|---------------|
| NFES # | DESCRIPTION | U/I | QUANTITY |
| 00426 | BAG - SLINGABLE, WATER, 72 GL (272.6L), NON-POTABLE, ORANGE | EA | 4 BX (1 E/A) |
| 000909 | WATERBAG ASSEMBLY - 5 GL, M2015 W/PUMP | KT | 1 BX |
| 000307 | EXTINGUISHER - FIRE, 20A:120BC, 20 LBS | EA | 1 PC |
| 001842 | FOOD - MEALS READY TO EAT (MRE'S) | BX | 60 |
| 000465 | CUP - PAPER, PLASTIC COATED, 8 OZ | BX | 1 BX |
| 000037 | CANTEEN - 1 QT (.9L), PLASTIC, DISPOSABLE, W/O COVER | EA | 1 BX |
| 000048 | CONTAINER - 5 GL (18.9L), PLASTIC, COLLAPSIBLE, W/OVERPACK | BX | 2 BX |
| 000531 | NET - CARGO, DRAWSTRING, 12' X 12', POLYPROPYLENE, 3000 LB CAPACITY | EA | 8 BX |
| 000528 | LEAD LINE - 12', 3000 LB CAPACITY | EA | 1 BX |
| 003522 | NET ASSEMBLY KIT | | 3 BX |
| 003521 | FORMS PACK KIT | | 1 BX |
| 001040 | KIT - CRASH RESCUE | KT | 3 BAGS |
| 003520 | ACCESORY PACK KIT | | 1 BX |
| 000142 | PAPER - TOILET | BX | 2 BX |
| 000240 | TOWEL - PAPER, TWO PLY, ROLL | BX | 3 BX |
| 001038 | TOWEL - BATH, DISPOSABLE, 24" X 36" | BX | 6 BX |
| 000880 | COVER - PALLET, CLEAR 50" X 42" X 76" | RO | 1 ROLL |
| 000143 | SHEETING - PLASTIC, CLEAR, 16' X 100' | RO | 1 ROLL |
| 000316 | WRAP - STRETCH, 15" - 18", DISPOSABLE | RO | 2 BX |
| 0144 | WEATHER ALL VISQUEEN PLASTIC SHEETING | | 3 |
| 000712 | TOWEL - WATERLESS, CLEANSING, MINIMUM 12" X 30" | EA | 1 BX |
| 000320 | KIT - INCIDENT BASE MAINTENANCE | KT | 1 BX |
| 001031 | KIT - SIGN, INCIDENT BASE | KT | 2 BX |
| 001026 | KIT - ROAD SIGN | KT | 1 BX |
| 001024 | SUBKIT OF ROAD SIGN KIT(001026) #1 | KT | 2 BX |
| 001180 | TOOL - COMBINATION SHOVEL AND GRUB HOE | EA | 8 PC |
| 000146 | PULASKI - WITH PLASTIC SHEATH | EA | 2 BX (10 E/A) |
| 001854 | SHEATH - MCLEOD, PLASTIC | EA | 8 PC |
| 000171 | SHOVEL - WITH PLASTIC SHEATH, SIZE #1 | EA | 11 PC |
| 000970 | KIT - SECURITY FENCE | KT | 1 BX |
| 001005 | TRASH BIN | EA | 5 PC |
| 000586 | LADDER | EA | 1 PC |
| S-5850 | ULINE DRUM LINERS | | 3 BX |
| NWK 0665-31 | HOSE ROLLER | | 1 |
| 000340 | CHAINSAW-KIT | | 1 |
| 0557 | COOLER | | 13 PC |
| 006051 | LIGHTING KIT | | 1 |
| 001172 | EXTENSION CORD 100FT | | 1BX |
| 00560 | EXTENSION CORD 50FT | | 2 BX |
| 000077 | TENT | | 12 PC |
| 000022 | SLEEPING BAGS | | 6 BX |
| 001566 | SLEEPING MAT | | 25 PC |
| 001060 | ACCESORY KIT VOLUME PUMP | | 1 |
| 001222 | VOLUME PUMP (TRASH PUMP) | | 1 |
| 00148 | PORTABLE PUMP HIGH PRESSURE (MARK III) | | 1 |
| 15-A | AA BATTERIES | | 121 |

| Beachie Creek Inventory List- OCT 04 | | | |
|--------------------------------------|---------------------------------|-----|-------------|
| NFES # | DESCRIPTION | U/I | QUANTITY |
| 24-A | AAA BATTERIES | | 1 BX |
| 803 | 7.5 V BATTERIES | | 15 PC |
| NWK-0709-85 | GENERATORS | | 1 GENERATOR |
| 000053 | COTS | | 2 PC |
| 000925 | FIRE SHELTER | | 68 PC |
| 000975 | LARGE FIRE SHELTER | | 19 PC |
| 000318 | UVEX SAFTEY GOGGLES | | 62 PC |
| 0475 | UVEX SAFTEY GLASSES | | 63 PC |
| 003012 | YELLOW LIGHTSTICKS | | 10 BX |
| 003007 | RED LIGHTSTICKS | | 3 BX |
| 003009 | GREEN LIGHTSTICKS | | 1 BX |
| X6639AK | CAN LINERS 33 GAL | | 10 BX |
| 002501 | LANTERNS/ CAMP | | 5 BX |
| 0998 | SANITIZER INDIVIDUAL 4 OZ | | 1 BX |
| 009995 | SANITIZER 1 GAL | | 5 PC |
| 009986 | DISINFECTANT-WET WIPES | | 1 BX |
| 009988 | DISINFECTANT CONCENTRATE 1GAL | | 1 BX |
| 000208 | SOAP | | 1 BX |
| 009993 | GLOVES NITRILE XXL | | 3 X |
| ? | GLOVES NITRILE XL | | 5 BX |
| ? | GLOVES NITRILE M | | 4 BX |
| 000279 | RED RIBBON | | 4 BX |
| 002398 | ORANGE RIBBON | | 3 BX |
| 000278 | YELLOW RIBBON | | 4 BX |
| 000267 | HAZARD RIBBON | | 2 BX |
| 001077 | I.R.P.G | | 150 PC |
| 001285 | PARACHUTE CORD | | 2 ROLLS |
| 7287 | HELMET/YELLOW HARD HAT | | 30 PC |
| 000718 | HEAD LAMP | | 28 PC |
| 1294 | LEATHER GLOVES SMALL | | 28 PC |
| 1295 | LEATHER GLOVES MEDIUM | | 11 PC |
| 1296 | LEATHER GLOVES LARGE | | 20 PC |
| 1297 | LEATHER GLOVES XL | | 57 PC |
| 000295 | FLUORESCENT ORANGE GLOVES LARGE | | 2 PC |
| 2401 | PINK FLAGGING | | 4 BX |
| 6066 | KILLER TREE FLAGGING | | 2 BX |
| 00067 | FIRTS AID | | 1 BX |
| 001727 | TRAUMA KIT | | 3 BX |
| 001675 | BIO-HAZARD KIT (MULTI-PERSON) | | 2 BX |
| 001660 | BIO-HAZARD KIT (INDIVIDUAL) | | 2 PACKS |
| 000650 | EVACUATION KIT | | 2 BX |
| 000251 | ABSORBANT MAT | | 1 ROLLS |
| 000570 | SHIRTS XXL | | 51 PC |
| 0570 | SHIRTS XXL LONG | | 60 PC |
| 000580 | SHIRTS XL | | 49 |
| 002079 | SHIRTS XL LONG | | 35 PC |
| 000579 | SHIRTS LARGE | | 51 PC |
| 002078 | SHIRTS LARGE LONG | | 26 PC |
| 000578 | SHIRTS MEDIUM | | 24 PC |
| 000569 | SHIRTS MEDIUM LONG | | 47 PC |

| Beachie Creek Inventory List- OCT 04 | | | |
|--------------------------------------|---------------------------------|-----|---------------|
| NFES # | DESCRIPTION | U/I | QUANTITY |
| 000577 | SHIRTS SMALL | | 29 PC |
| 0522 | SHIRTS XSMALL | | 2 PC |
| 002700 | JEANS 26"-30" X 34 REG | | 50 PC |
| 002801 | JEANS 28"-32" X 30 SHORT | | 50 PC |
| 002701 | JEANS 28"-32" X 34 REG | | 27 PC |
| 002702 | JEANS 30"- 34" X 34 REG | | 14 PC |
| 002803 | JEANS 32"- 36" X 30 SHORT | | 34 PC |
| 002703 | JEANS 32"- 36" X 34 REG | | 8 PC |
| 002845 | JEANS 32"- 36" X 36 LONG | | 15 PC |
| 002804 | JEANS 34"- 38" X 30 SHORT | | 20 PC |
| 002704 | JEANS 34"- 38" X 34 REG | | 33 PC |
| 002847 | JEANS 34" - 38" X 36 LONG | | 13 PC |
| 002805 | JEANS 36" - 40" X 30 SHORT | | 16 PC |
| 002705 | JEANS 36" - 40" X 34 REG | | 78 PC |
| 002706 | JEANS 38" - 42" X 34 REG | | 29 PC |
| 002849 | JEANS 38" - 42" X 36 LONG | | 14 PC |
| 002807 | JEANS 40" - 44" X 30 SHORT | | 22 PC |
| 002707 | JEANS 40" - 44" X 34 REG | | 28 PC |
| 2851 | JEANS 44"-48" X 36 LONG | | 10 PC |
| 0045 | CHAPS SIZE 32 | | 3 PC |
| 000078 | CHAPS SIZE 36 LONG | | 6 PC |
| 0150 | CHAPS SIZE 40 | | 7 PC |
| ? | WEDGES 6" | | 15 PC |
| 000884 | WEDGES 8" | | 6 PC |
| 002725 | WEDGES BIG 12" | | 3 PC |
| ? | PAINTERS TAPE | | 3 ROLLS |
| ? | DUCT TAPE | | 6 ROLL |
| NA | SPRAY BOTTLES | | 13 PC |
| ? | WIRE TAPE | | 15 PC |
| 14331 | BABY WIPES | | 60 PACKS |
| 000634 | RUBBER BANDS FOR PALLET COVER | | 5 PACKS |
| 000027 | BASIN 3.8 L DOG BOWLS | | 21 PC |
| 0351 | BASTARD FILES 8" | | 84 PC |
| 1059 | BASTARD FILES 12" | | 47 PC |
| 0345 | ROUND FILES/HAND FILES | | 92 PC |
| 009999 | FACEMASK | | 6 BX |
| 001034 | RADIO BATTERY HOLDER/CLAM SHELL | | 11 PC |
| 002315 | PILOT HELMET LARGE | | 1 |
| 002314 | PILOT HELMET REGULAR | | 1 |
| 00727 | HOSE RUBBER BAND | | 2 BX |
| 0000744 | PACKASCK WATERPROOF | | 1 BX (20 E/A) |
| 000891 | FORM SF-261 CREW TIME REPORT | | 2 PC |
| 001242 | HIGH VISIBILITY VEST | | 2 PC |

| 2020 NFES Items, Riverside Supply - 10-4-2020 | | | |
|---|--|-----|----------|
| NFES # | DESCRIPTION | U/I | Quantity |
| 10 | REDUCER - 1 1/2" NH-F (9 TPI) TO 1" NPSH-M (11 1/2 TPI) | EA | 77 |
| 21 | BAG - GARBAGE CAN LINER, PLASTIC, 30 GL, 39" X 33" | BX | 8 |
| 22 | BAG - SLEEPING, COLD WEATHER, 34" X 76" | EA | 9 |
| 27 | BASIN - 4 QT(3.8L), WASH, POLYETHYLENE | EA | 21 |
| 30 | BATTERY - SIZE AA, 1.5 VOLT, PENLIGHT | PG | 588 |
| 33 | BATTERY - SIZE D, 1.5V, ALKALINE, GENERAL PURPOSE | PG | 44 |
| 37 | CANTEEN - 1 QT (.9L), PLASTIC, DISPOSABLE, W/O COVER | EA | 100 |
| 46 | CLAMP - HOSE, SHUT-OFF, 1" - 1 1/2" HOSES, 10" LONG | EA | 3 |
| 48 | CONTAINER - 5 GL (18.9L), PLASTIC, COLLAPSIBLE, W/O COVER | BX | 1 |
| 53 | COT - FOLDING, 12 OZ COVER, 31" X 77 1/2" | EA | 3 |
| 77 | TENT - 2 PERSON | EA | 6 |
| 83 | POLE - UPRIGHT, ADJUSTABLE | EA | 2 |
| 143 | SHEETING - PLASTIC, CLEAR, 16' X 100' | RO | 2 |
| 148 | PUMP - PORTABLE, HIGH PRESSURE W/FUEL LINE | EA | 2 |
| 171 | SHOVEL - WITH PLASTIC SHEATH, SIZE #1 | EA | 9 |
| 259 | VALVE - WYE, GATED, 1" NPSH-F X 1" NPSH-M X 1" NPSH-M | EA | 17 |
| 307 | EXTINGUISHER - FIRE, 20A:120BC, 20 LBS | EA | 3 |
| 341 | OIL - 2 CYCLE | QT | 14 |
| 491 | TANK, PROPANE - FUEL, LPG, 20# TANK (5 GL) | EA | 4 |
| 531 | NET - CARGO, DRAWSTRING, 12' X 12', POLYPROPYLENE | EA | 2 |
| 606 | CAN - GASOLINE, SAFETY, 5GL, DOT APPROVED STYLE J | EA | 6 |
| 608 | FENCE - BARRICADE, PLASTIC, 4' X 100' | RO | 1 |
| 710 | COUPLING - DOUBLE FEMALE, 1" NPSH (11 1/2 TPI) | EA | 5 |
| 712 | TOWEL - WATERLESS, CLEANSING, MINIMUM 12" X 30" | EA | 96 |
| 733 | REDUCER - 1" NPSH-F (11 1/2 TPI) TO 3/4" NH-M (11 1/2 TPI) | EA | 75 |
| 835 | VALVE - SHUT OFF, BRASS, BALL, 3/4" NH | EA | 100 |
| 855 | COUPLING - DOUBLE FEMALE 1 1/2" NPSH (11 1/2 TPI) | EA | 5 |
| 856 | COUPLING - DOUBLE MALE 1 1/2" NH-M (9-TPI) | EA | 5 |
| 904 | VALVE - WYE, GATED, BRASS, 3/4" NH-F X 3/4" NF-M X 3/4" NF-M | EA | 48 |
| 909 | WATERBAG ASSEMBLY - 5 GL, M2015 W/PUMP | KT | 10 |
| 1016 | HOSE - GARDEN, SYNTHETIC, 3/4" NH X 50' | LG | 47 |
| 1023 | BATTERY - RADIO, REPEATER, ALKALINE, 7.5 VOLT, NEDA | EA | 56 |
| 1038 | TOWEL - BATH, DISPOSABLE, 24" X 36" | BX | 1 |
| 1145 | FOAM - CONCENTRATE, CLASS A, 5 GL, LIQUID (18.9L) P | PL | 3 |
| 1201 | VALVE - SHUT OFF, 1" | EA | 10 |
| 1207 | VALVE - SHUT OFF, 1 1/2" | EA | 10 |
| 1238 | HOSE - SYNTHETIC, LINED, 1" NPSH X 100' | LG | 28 |
| 1239 | HOSE - SYNTHETIC, LINED, 1 1/2" NH X 100' | LG | 25 |
| 1336 | FORM, ICS-213 - GENERAL MESSAGE, (1/14) | PG | 6 |
| 1521 | FLY - TENT, TYPE II, 9' X 10' | EA | 9 |
| 1566 | MAT, SLEEPING - 3/8" X 23 5/8" X 74 3/4", POLYETHYLENE | EA | 31 |
| 1842 | FOOD - MEALS READY TO EAT (MRE'S) | BX | 29 |
| 1880 | OIL - BAR & CHAIN, 1 GL | GL | 12 |
| 2229 | REDUCER - 2 1/2" NPSH-F, 1 1/2" NH-M | EA | 5 |
| 2230 | REDUCER - 2 1/2" NH-F, 1 1/2" NH-M | EA | 5 |
| 2240 | TEE - HOSELINE, W/CAP & CHAIN, 1" NPSH-F X 1" NPSH-M | EA | 20 |
| 6030 | TANK, COLLAPSIBLE - 4800-5000 GL, FREE STANDING | EA | 1 |
| 6051 | KIT - LIGHTING, MULTI-LIGHT CORD | KT | 1 |
| 6139 | HEATER, PROPANE - 20 LB TANK MOUNTED | EA | 1 |
| 6187 | HEATER - PROPANE, OUTDOOR, 360 DEG, RADIANT HEAT | EA | 1 |

| 2020 NFES Items, Riverside Supply - 10-4-2020 | | | |
|---|--|-----|----------|
| NFES # | DESCRIPTION | U/I | Quantity |
| 2844 | JEAN - FLAME RESISTANT,BDU,30"-34"X36"INSEAM | PR | 30 |
| 1059 | FILE - MILL, 12", BASTARD | EA | 4 |
| 131 | MASK - DUST, N95 SPECIFICATIONS | EA | 50 |
| 1027 | EARPLUGS - FOAM, DISPOSABLE | PG | 200 |
| 801 | TAG - UNLEADED GASOLINE, UN1203, FLAMMABLE, RED | EA | 36 |
| 802 | TAG - DIESEL, UN1202, FLAMMABLE, GREEN | EA | 29 |
| 803 | TAG - DRIP TORCH FUEL, UN1993, FLAMMABLE, BLUE | EA | 28 |
| 805 | TAG - 2 STROKE MIX, UN1203, FLAMMABLE, YELLOW | EA | 53 |
| 370 | FORM, 9120-1 - RADIO STATION LOG | PD | 31 |
| 863 | FORM, OF-286 - EMERGENCY EQUIPMENT USE INVOICE, | PG | 1 |
| 872 | FORM, OF-297 - EMERGENCY EQUIPMENT SHIFT TICKET | PD | 62 |
| 891 | FORM, SF-261 - CREW TIME REPORT, (5/78) | BK | 95 |
| 1286 | FORM, OF-315A - INCIDENT REPLACEMENT REQUISITION | PG | 1 |
| 1336 | FORM, ICS-213 - GENERAL MESSAGE, (1/14) | PG | 1 |
| 1472 | FORM, OF-316 - INTERAGENCY INCIDENT WAYBILL (4/00) | PG | 8 |
| 21 | BAG - GARBAGE CAN LINER, PLASTIC, 30 GL, 39" X 33" | BX | 3 |
| 30 | BATTERY - SIZE AA, 1.5 VOLT, PENLIGHT | PG | 27 |
| 33 | BATTERY - SIZE D, 1.5V, ALKALINE, GENERAL PURPOSE | PG | 72 |
| 37 | CANTEEN - 1 QT (.9L), PLASTIC, DISPOSABLE, W/O COV | EA | 200 |
| 45 | CHAPS - PROTECTIVE, SUMMER WEIGHT, 32" LONG | PR | 4 |
| 67 | KIT - FIRST AID, TYPE 1, POCKET | KT | 96 |
| 71 | TAPE - DUCT, 2" X 60 YD | RO | 10 |
| 77 | TENT - 2 PERSON | EA | 1 |
| 78 | CHAPS - PROTECTIVE, SUMMER WEIGHT, 36" LONG | PR | 6 |
| 142 | PAPER - TOILET | BX | 1 |
| 150 | CHAPS - PROTECTIVE, SUMMER WEIGHT, 40" LONG | PR | 7 |
| 206 | WASHCLOTH - WATERLESS, CLEANSING, 10" X 11 1/2" | EA | 400 |
| 240 | TOWEL - PAPER, TWO PLY, ROLL | BX | 2 |
| 264 | RIBBON - FLAGGING, WHITE, 1" WIDE | RO | 19 |
| 267 | RIBBON - FLAGGING, HAZARDS, 1" WIDE | RO | 78 |
| 279 | RIBBON - FLAGGING, RED, 1" WIDE | RO | 57 |
| 318 | GOGGLES - CLEAR LENS, UVEX STEALTH MODEL ANSI Z | PR | 45 |
| 475 | GLASSES - SAFETY, CLEAR | PR | 26 |
| 515 | WEDGE - FELLING, 6" | EA | 3 |
| 522 | SHIRT - FIRE, X-SMALL | EA | 5 |
| 566 | RIBBON - FLAGGING, "ESCAPE ROUTE", 1" X 100 YDS | RO | 24 |
| 570 | SHIRT - FIRE, XX-LARGE | EA | 3 |
| 577 | SHIRT - FIRE, SMALL | EA | 7 |
| 578 | SHIRT - FIRE, MEDIUM | EA | 8 |
| 579 | SHIRT - FIRE, LARGE | EA | 5 |
| 580 | SHIRT - FIRE, X-LARGE | EA | 13 |
| 674 | PACK, FIRELINE - COMPLETE, BLUE | EA | 1 |
| 712 | TOWEL - WATERLESS, CLEANSING, MINIMUM 12" X 30" | EA | 73 |
| 718 | HEADLAMP - FIREFIGHTERS, LED | EA | 29 |
| 763 | TAPE - PAINTERS, BLUE, 2" | RO | 4 |
| 884 | WEDGE - FELLING, 8", TEXTURED/SMOOTH | EA | 6 |
| 925 | SHELTER - FIRE, COMPLETE, M2002 | EA | 17 |
| 1023 | BATTERY - RADIO, REPEATER, ALKALINE, 7.5 VOLT, NE | EA | 88 |
| 1038 | TOWEL - BATH, DISPOSABLE, 24" X 36" | BX | 2 |
| 1294 | GLOVES - LEATHER, SMALL, FOREST WORKER, NFPA C | PR | 44 |

| 2020 NFES Items, Riverside Supply - 10-4-2020 | | | |
|---|---|-----|----------|
| NFES # | DESCRIPTION | U/I | Quantity |
| 1295 | GLOVES - LEATHER, MEDIUM, FOREST WORKER, NFPA | PR | 69 |
| 1296 | GLOVES - LEATHER, LARGE, FOREST WORKER, NFPA | PR | 34 |
| 1297 | GLOVES - LEATHER, X-LARGE, FOREST WORKER, NFPA | PR | 13 |
| 2078 | SHIRT - FIRE, LARGE, LONG | EA | 8 |
| 2079 | SHIRT - FIRE, X-LARGE, LONG | EA | 16 |
| 2396 | RIBBON - FLAGGING, CHARTREUSE FLUORESCENT, 1" W | RO | 6 |
| 2398 | RIBBON - FLAGGING, ORANGE FLUORESCENT, 1" WIDE | RO | 64 |
| 2401 | RIBBON - FLAGGING, DARK PINK, 1" WIDE | RO | 54 |
| 2701 | JEAN - FLAME RESISTANT, BDU, 28"-32"X34"INSEAM | PR | 9 |
| 2702 | JEAN - FLAME RESISTANT, BDU, 30"-34"X34"INSEAM | PR | 13 |
| 2703 | JEAN - FLAME RESISTANT, BDU, 32"-36"X34"INSEAM | PR | 38 |
| 2704 | JEAN - FLAME RESISTANT, BDU, 34"-38"X34"INSEAM | PR | 34 |
| 2705 | JEAN - FLAME RESISTANT, BDU, 36"-40"X34"INSEAM | PR | 20 |
| 2707 | JEAN - FLAME RESISTANT, BDU, 40"-44"X34"INSEAM | PR | 15 |
| 2725 | WEDGE - PLASTIC, FELLING, 12" X 1-1/8" X 3 1/4" | EA | 6 |
| 2800 | JEAN - FLAME RESISTANT, BDU, 26"-30"X30"INSEAM | PR | 25 |
| 2801 | JEAN - FLAME RESISTANT, BDU, 28"-32"X30"INSEAM | PR | 17 |
| 2803 | JEAN - FLAME RESISTANT, BDU, 32"-36"X30"INSEAM | PR | 13 |
| 2804 | JEAN - FLAME RESISTANT, BDU, 34"-38"X30"INSEAM | PR | 27 |
| 2805 | JEAN - FLAME RESISTANT, BDU, 36"-40"X30"INSEAM | PR | 22 |
| 2806 | JEAN - FLAME RESISTANT, BDU, 38"-42"X30"INSEAM | PR | 20 |
| 2845 | JEAN - FLAME RESISTANT, BDU, 32"-36"X36"INSEAM | PR | 39 |
| 2847 | JEAN - FLAME RESISTANT, BDU, 34"-38"X36"INSEAM | PR | 34 |
| 2848 | JEAN - FLAME RESISTANT, BDU, 36"-40"X36"INSEAM | PR | 19 |
| 2849 | JEAN - FLAME RESISTANT, BDU, 38"-42"X36"INSEAM | PR | 51 |
| 2850 | JEAN - FLAME RESISTANT, BDU, 40"-44"X36"INSEAM | PR | 3 |
| 2910 | SHIRT - FIRE, 3XL | EA | 17 |
| 3009 | LIGHTSTICK - CHEMICAL, 12 HOUR, GREEN | BX | 3 |
| 3012 | LIGHTSTICK - CHEMICAL, 12 HOUR, YELLOW | BX | 7 |
| 6030 | TANK, COLLAPSIBLE - 4800-5000 GL, FREE STANDING | EA | 2 |
| 6066 | RIBBON - FLAGGING, "KILLER TREE", 1 1/2" X 150', ORAN | RO | 67 |
| 6067 | RIBBON - FLAGGING, "SPOT FIRE", 1 1/2" X 150', ORANG | RO | 54 |
| 7287 | HELMET - CAP STYLE, YELLOW, BULLARD 911C | EA | 25 |
| 9988 | Disinfectant concentrate 1 gal | GL | 8 |
| 565 | Wiping Rags | EA | 10 |
| 208 | Soap - LIQUID, 1.5 OZ (DIAL) | EA | 89 |
| 9994 | Gloves Nitrile XXL | BX | 3 |
| 9991 | Gloves Nitrile M | BX | 1 |
| 1285 | Parachute Cord | RL | 1 |

Beachie Creek Fire - Gates Oregon

COMT Kit Inventory

| Kit Description including C/I, # (i.e. CMD Rptr C1) | Kit Number | S Nbr | Location & Coordinates | Install Date | Demob Date | Remarks: drive, fly, single or double stack, solar, etc. | Batts Last Chngd or Solar Installed | Maint. Interval (days) | Next Batt Swap / Maint. Visit | Maint. Schedule | | | |
|---|------------|-------------|---|--------------|------------|---|--|------------------------------|-------------------------------------|-----------------|--------------|--------------|--------------|
| | | | | | | | | | | Sat 10/3 | Sun 10/04 | Mon 10/05 | Tue 10/06 |
| Air Link | 4370-043 | S-000172.7 | House Mountain | 9/4/20 | 9/25/20 | Destroyed antenna remains removed at. | | | | | | | |
| Air Link | 4370-031 | S-000823 | N44 50 28.3 W122 28 59.8 | 9/23/20 | | Drive in Dble Stack | 10/1/20 | 7 | 10/8/20 | | | | |
| Air Link | 4370-045 | S-000668 | | 9/20/20 | 9/25/20 | | | | | | | | |
| CMD King | 4381-123 | S-000270 | | | 9/25/20 | | | | | | | | |
| CMD King | 4381-115 | S-000762 | | | 9/25/20 | | | | | | | | |
| CMD King | 4381-132 | S-000763 | | | 9/25/20 | | | | | | | | |
| CMD King | 4381-124 | S-000766 | | | 9/25/20 | | | | | | | | |
| CMD King | 4381-144 | S-000766 | | | 9/25/20 | | | | | | | | |
| CMD King | 4381-280 | S-000172.1 | | | | box burnt. Radio#1 Burnt | | | | | | | |
| CMD King | 4381-107 | S-000172.2 | | | | box burnt. Radio#5 Burnt | | | | | | | |
| CMD King | 4381-062 | S-000172.3 | | | | box burnt | | | | | | | |
| CMD King | 4381-043 | S-000764 | | | | | | | | | | | |
| CMD King | 4381-242 | S-000619 | | | | | | | | | | | |
| CMD King | 4381-342 | S-000670 | | | | | | | | | | | |
| CMD Repeater C84, CMD 11 | 4312-C037 | S-000573 | Raider Ridge N44 59 58.8 W122 21 0.47 | 9/17/20 | | Drive in Dble Stack | 10/1/20 | 7 | 10/8/20 | | | | |
| CMD Repeater C11, CMD10 | 4312-C064 | S-000298 | Sweet Spring Mountain N44 50 28.8 W122 28 59.4 | 9/18/20 | | Drive in Dble Stack | 9/30/20 | 7 | 10/7/20 | | | | |
| CMD Repeater C8, CMD 8 | 4312-C007 | S-000172.5 | Story Ridge N44 50 40.01 W122 15 11.88 | 9/4/20 | | Cmd 8 Unknown condition. Flew over, could not land. One side of box is black, not working | | | | | | | |
| CMD Repeater C85, CMD 12 | 4312-C105 | S-000574 | High Hill N45 1 4.7 W122 33 53.4 | 9/18/20 | | Drive in Dble Stack | 10/1/20 | 7 | 10/8/20 | | | | |
| CMD Repeater C10, CMD 9 | 4312-C021 | S-000187 | Halls Ridge N44 43 53.46 W122 13 17.58 | 9/5/20 | | Drive in, Dble Stack. very tight road, blue flagging | 10/3/20 | 7 | 10/10/20 | | | | |
| COML Kit | 4320-009 | S-000672 | | | | | | | | | | | |
| Icom (Air) | 4370-043 | S-000472.2 | | | 10/5/20 | Only radio #1 survived, demobed with 4370-042 | | | | | | | |
| Icom (Air) | 4370-031 | S-0000823 | | | 9/25/20 | | | | | | | | |
| Icom (Air) | 4370-045 | S-000668 | | | | | | | | | | | |
| Logistics Repeater L6 | 4248-L056 | S-000172.8 | Sweet Springs Mt. N44 51 21.33 W122 27 38.11 | 9/17/20 | | Drive in Dble Stack, hike in loose terrain | 10/1/20 | 7 | 10/8/20 | | | | |
| Log-Moto | 4244-030 | S-000472.4 | | | 10/5/20 | Only radio #1-3 survived, demobed with 4370-042 | | | | | | | |
| Log-Moto | 4244-030 | S-000660 | | | 9/25/20 | | | | | | | | |
| Mountain Top Accessory Kit | 4100-134 | S-000172.10 | | | | didn't burn - in ICP | | | | | | | |
| Mountain Top Accessory Kit | 4100-179 | S-000172.9 | | | | didn't burn - in ICP | | | | | | | |
| Mountain Top Accessory Kit | 4100-055 | S-000299 | | | | in ICP | | | | | | | |
| Mountain Top Accessory Kit | 4100-140 | S-000576 | | | | | | | | | | | |
| Mountain Top Accessory Kit | 4100-143 | S-000575 | | | | | | | | | | | |
| Mountain Top Accessory Kit | 4100-048 | S-000669 | Sweet Springs | | | | | | | | | | |
| Remote - Midland | 4330MD-050 | S-000300 | ICP behind commo | 9/29/20 | | Beachie Tac 1 | 10/2/20 | 7 | 10/9/20 | | | | |
| Remote - Midland | 4330MD-050 | S-000172.9 | | | 9/2/20 | | | | | | | | |
| Remote Kit | 4330MD-097 | S-000789 | ICP IWI Room Bldg 5, Rm 206 | 10/1/20 | | L18 Hub (Riverside) | 10/1/20 | 10 | 10/11/20 | | | | |

10/3/2020

8:21 PM
53

Riverside

COMT Kit Inventory

| Kit Description including Cd. # (i.e. CMD Rptr C1) | Kit Number | S.Nmbr | Location & Coordinates | Install Date | Demob. Date | Remarks: drive, fly, single or double stack, solar, etc. | Batts Last Chrgd or Solar Installed | Maint. Interval (days) | Next Batt. Swap / Maint. Visit | Maint. Schedule | | | |
|--|------------|-------------|---|--------------|----------------|---|--|------------------------------|--------------------------------------|-----------------|--------------|--------------|--------------|
| | | | | | | | | | | Sat 10/03 | Sun 10/04 | Mon 10/05 | Tue 10/06 |
| Air Link | 4370-042 | S-000081.5 | | | | | | | | | | | |
| CMD King | 4381-266 | S-000081.9 | | | | | | | | | | | |
| CMD King | 4381-250 | S-000081.8 | | | | | | | | | | | |
| CMD King | 4381-153 | S-000081.10 | | | | | | | | | | | |
| CMD King | 4381-140 | S-000159 | | | | | | | | | | | |
| CMD King | 4381-326 | | | | | | | | | | | | |
| CMD King | 4381-136 | S-000445.1 | | | | | | | | | | | |
| CMD Repeater C75, CMD 10 | 4312-C135 | S-000395 | Drop Point 78 N45 0 35.47, W122 20 20.39 | 9/29/20 | | Drive, Dbl stack | 9/28/20 | 7 | 10/5/20 | | | | |
| CMD Repeater C77, CMD 9 | 4312-C103 | S-000393 | Goat Mtn 07 52 56, W122 17 29.28 | 9/29/20 | | Drive, Dbl stack | 9/27/20 | 7 | 10/4/20 | | | | |
| CMD Repeater C79, CMD 7 | 4312-C126 | S-000396 | Mt. Tumala 13 51.43, W122 02 27.22 | 9/29/20 | | Drive, Dbl stack | 9/29/20 | 7 | 10/6/20 | | | | |
| CMD Repeater C82, CMD 11 | 4312-C115 | S-000394 | Mt. Lowe 57 36.64, W121 58 32.40 | 9/29/20 | | Drive, Dbl stack | 10/3/20 | 7 | 10/10/20 | | | | |
| CMD Repeater C83, CMD 8 | 4312-C025 | S-000397 | Whaleshead 06 13.94, W122 07 17.22 | 9/29/20 | | Fly, Dbl stack | 9/29/20 | 7 | 10/6/20 | | | | |
| COML Kit | 4320-005 | S-000446 | | | | | | | | | | | |
| Command Repeater | 4342-C102 | S-000038 | | | 9/23/20 | | | | | | | | |
| Command Repeater | 4342-C126 | S-000092 | | | 9/23/20 | | | | | | | | |
| Command Repeater | 4342-C136 | S-000081.4 | | | 9/23/20 | | | | | | | | |
| Log Repeater L18 | 4248-L073 | S-000081.3 | Goat Mtn West 07 54 20, W122 17 49.83 | 9/29/20 | | Drive, Dbl stack | 9/27/20 | 7 | 10/4/20 | | | | |
| Logs Midland | 4244-084 | S-000081.6 | | 9/13/20 | | | | | | | | | |
| Logs Midland | 4244-033 | S-000444.1 | | | | | | | | | | | |
| Masts | 4305 | | | | | | | | | | | | |
| Mountain Top Kit | 4100-186 | S-000081.1 | | | 9/16/20 | | | | | | | | |
| Mountain Top Kit | 4100-111 | S-000136.1 | | | 9/16/20 | | | | | | | | |
| Mountain Top Kit | 4100-116 | S-000164 | | | 9/17/20 | | | | | | | | |
| Mountain Top Kit | 4100-138 | S-000081.2 | | | | | | | | | | | |
| Mountain Top Kit | 4100-130 | S-000402 | | | | | | | | | | | |
| Mountain Top Kit | 4100-146 | S-000401 | | | | | | | | | | | |
| Mountain Top Kit | 4100-132 | S-000399 | | | | | | | | | | | |
| Mountain Top Kit | 4100-147 | S-000400 | | | | | | | | | | | |
| Mountain Top Kit | 4100-072 | S-000398 | | | | | | | | | | | |
| Remote Kit | 4330MD-107 | S-000081.7 | ICP Ops Bldg 5, Rm 251 | 10/1/20 | | L18 Hub (Riverside), handset only | | | | | | | |
| Remote Kit | 4330MD-032 | S-000135 | ICP Ops Bldg 5, Rm 251 | 10/1/20 | | L6 Hub (Beachie Crk) handset | | | | | | | |
| Remote Kit | 4330MD-075 | S-000334 | ICP IWI Bldg 5, Rm 266 | 10/1/20 | | Only | 10/1/20 | 10 | 10/11/20 | | | | |
| Remote Kit | 4330MD-086 | S-000476.1 | ICP Medical | 10/2/20 | | L6 Hub (Beachie Crk) | 10/2/20 | 10 | 10/12/20 | | | | |
| Remote Kit | 4330MD-106 | S-000477.1 | ICP Medical | 10/2/20 | | L18 Hub (Riverside) | 10/2/20 | 10 | 10/12/20 | | | | |