

ORIGINAL

# Salt and Griffin Incident Action Plan

USDA Forest Service  
Tonto National Forest

AZ-TNF-0002511  
P3NF3Q (0312)



August 24 - 25, 2020

Day Shift: 0600 - 2000 Night Shift: 1730 - 0730

Datum WGS 84 DD MM.MMM



*For Maps*



*For COVID-19 Screening*

## \*\*\* COVID-19 Mitigation Actions and Leader's Intent \*\*\*

- ✓ Assigned resources will practice social distancing and be in alignment with the "module of one concept." When interacting outside of the "module of one," face-coverings are required; this includes ICP, established business within the city limits, fireline interactions outside of the "module of one".
- ✓ Without compromising firefighter safety, social distancing should be practiced to the extent possible.
- ✓ All resources should adhere to the closed ICP strategy; please utilize the virtual check-in and demob procedures to reduce potential exposure.
- ✓ Reduce the number of briefing participants to only module leaders or those deemed necessary.

Mark Bernal, Incident Commander

# INCIDENT OBJECTIVES

ICS-202

INCIDENT NAME

**SALT AND GRIFFIN**DATE  
PREPARED

8/23/2020

TIME  
PREPARED

1600

OPERATIONAL PERIOD (DATE/TIME)

**Day and Night Shifts, August 24, 2020 (0600) – August 25, 2020 (0730)**

## GENERAL CONTROL OBJECTIVES

### Leader's Intent

- Commit resources only when there is a reasonable expectation of success in protecting life and critical property and infrastructure. Effectively implement a values-driven strategy utilizing a mix of tactics (direct, indirect, and point-protection) when and where the probability of success is high, and the risk is commensurate with the identified values. Success is defined as safely achieving objectives with the least firefighter exposure necessary including the spread of COVID-19 while enhancing stakeholder support and adhering to the core values of conservation, interdependence, and service.

### Values at Risk

- Incident personnel and the public
- Communities of concern to include Roosevelt, Rock House, Quail Run, Spring Creek Ranch, Wheatfields, Globe, Miami/Claypool, Seven Mile and other communities on the San Carlos Apache Reservation
- Properties and infrastructure to include transmission and utility lines, Chrysolite Mine, Phillips Mine, Regal Mine, Carol Spring Communication Site, ranches and range improvements to include the Griffin Ranch, recreational sites and facilities, ceremonial and historic sites
- Major transportation corridors to include Hwy 188, Hwy 288, U.S. 60/77
- San Carlos Timber resources to include pinelands and commercial harvest areas
- Salt River Canyon Wilderness trails and characteristics
- Archeological and cultural resources and sites
- Sonoran Desert vegetation and ecological communities (minimize the potential spread of noxious weeds)
- Waterways and riparian areas
- Wildlife Resources to include threatened and endangered species habitat to include Mexican spotted owl, narrow headed and northern Mexican garter snakes, and razorback sucker
- Airshed and smoke sensitive areas
- Relationships with cooperators, stakeholders, and the public in impacted areas

### Incident Objectives

- Provide for the safety of incident responders and the public through the application and implementation of sound risk management, to include planning and conducting fire operations.
- Values are communicated and protected from adverse fire and incident management actions.
- Foster and strengthen relationships between incident agencies, partners, cooperators, responders, and communities in impacted areas. Minimize impacts to properties and infrastructure.
- Provide timely and accurate information to the public and media on the fire status and incident activities.
- Engage the host agencies and resource advisors to effectively protect and minimize impacts to identified archeological, historic, natural values
- Effectively manage incident costs through the selection and implementation of strategies and tactics that have a high probability of success in meeting objectives.
- Manage timely, safe, and efficient initial attack within the TFR. Coordinate with local agencies and support initial attack outside the TFR.

### Incident Requirements

- Resources will maintain a "module of one" separation. Masks will be required when meeting in groups outside of your "module of one" and when interacting in close proximity (< than 6') with individuals outside your "module of one."
- Create and maintain a work environment in which people are treated with respect and dignity.
- Coordinate and document planned actions. Document use and intrusions in the wilderness.
- Notify the public in advance when smoke has the potential for a significant impact to smoke sensitive areas.

☒ ORGANIZATION LIST (ICS 203)☒ MEDICAL PLAN (ICS 206 & 206WF)☒ WEATHER FORECAST☒ ASSIGNMENT LIST (ICS 204)☒ AIR OPS. SUMMARY (ICS 220)☒ FIRE BEHAVIOR FORECAST☒ COMMUNICATION PLAN (ICS 205)☒ SAFETY MESSAGE☒ INCIDENT PHONE LIST

ICS 202

PREPARED BY (PLANNING SECTION CHIEF)

*Heather Gonzalez (t)*

APPROVED BY (INCIDENT COMMANDER)

Mark Bernal, ICT2

*Mark Bernal*



# ORGANIZATION ASSIGNMENT LIST

ICS-203

1. INCIDENT NAME

SALT - GRIFFIN FIRES

2. DATE PREPARED

08/23/2020

3. TIME PREPARED

1700 hours

4. OPERATIONAL PERIOD

DATE: August 24, 2020 – August 25, 2020

TIME: Day: 0600-2000 Night: 1730-0730

## 5. INCIDENT COMMANDER AND STAFF

INCIDENT COMMANDER	Mark Bernal, Mike Spilde (t)
DEPUTY IC	Jeff Andrews
SAFETY OFFICER	Don Muise, Gary Strickland (t)
COVID OFFICER	Ralph Lucas
LIAISON OFFICER	Scott Cooke, Pete Smith
INFORMATION OFFICER	Carrie Templin, Cliff Russell
INFORMATION OFFICER	Donna Storch*, John Helmich
INFORMATION OFFICER	Karen Takai, Laura Rabon

## 9. OPERATIONS SECTION

CHIEF, FIELD OPS	Manuel Martinez
CHIEF, FIELD OPS	Chris Kirby (t)
CHIEF, PLANNING OPS	Gabriel Holguin
CHIEF, PLANNING OPS	Tobe Haught (t)
CHIEF, NIGHT OPS	Paul Delmerico

## 6. AGENCY REPRESENTATIVES

USFS Agency Administrator	Kelly Jardine, Daisy Kinsey (t)
USFS Agency Representative	Adam Bromley
San Carlos Agency	Clark Richins
Arizona State AA	Don Colgan
READ	Jaimie Wages
San Carlos Agency READ	Blanche Hook

### a. BRANCH I - DIVISIONS/GROUPS

BRANCH DIRECTOR	Bob Arthur
DIVISION/GROUP	W/L/T
DIVISION/GROUP	P
DIVISION/GROUP	Heath Barker
DIVISION/GROUP	
DIVISION/GROUP	
DIVISION/GROUP	
DIVISION/GROUP	

### b. BRANCH II - DIVISIONS/GROUPS

## 7. PLANNING SECTION

CHIEF	Jeff Hickerson / Heather Gonzalez (t)
RESOURCE UNIT LEADER	Dave Isackson
SITUATION UNIT LEADER	Jason Thivener / James Heitholt* (t)
SITUATION UNIT LEADER	Katie Brown
FIRE BEHAVIOR ANALYST	Art Gonzales
INCIDENT METEOROLOGIST	Phillip Manuel
GISS	Wolfgang Grunberg / Ruben Rodriguez*
GISS	Dena Forrer (t)*
LONG-TERM ANALYST	Rob Beery
AIR RESOURCE ADVISOR	Ron Sherron*
IT SUPPORT SPECIALIST	Donavan Albert / Darren Toya (t)
HUMAN RESOURCES	David Legrand
STATUS CHECK-IN	
DEMOBILIZATION	Ed Paul

BRANCH DIRECTOR	Leroy Holguin
DIVISION/GROUP	A
DIVISION/GROUP	D
DIVISION/GROUP	H
DIVISION/GROUP	Z
DIVISION/GROUP	Brandon Glenn / Adrian Porchas
DIVISION/GROUP	Ricardo Romero

### c. BRANCH - DIVISIONS/GROUPS

BRANCH DIRECTOR	
DIVISION/GROUP	IA
DIVISION/GROUP	Darrell Miller
DIVISION/GROUP	
DIVISION/GROUP	NIGHT SALT
DIVISION/GROUP	Sunbear Vierra
DIVISION/GROUP	NIGHT GRIFFIN
DIVISION/GROUP	Steve Grater

### d. AIR OPERATIONS BRANCH

AIR OPERATIONS BRANCH DIR.	Brian Drinville
AIR SUPPORT SUPERVISOR	Albert Newman
AIR ATTACK SUPERVISOR	
AIR ATTACK SUPERVISOR	
AIR ATTACK SUPERVISOR	
HELIBASE MANAGER	Bertram Smith

## 8. LOGISTICS SECTION

CHIEF	Doug Williams
DEPUTY CHIEF	Margarita Guzman / Mark Catron*
SUPPLY UNIT LEADER	Rich LaCasse* / Lu Ann Dyer (t)
FACILITIES UNIT LEADER	Andrew Stevenson
GROUND SUPPORT UNIT LEAD	Tony Armijo* / Bruce Davidson
EQUIPMENT MANAGER	Bruce Davidson
ORDERING MANAGER	Corey Daughtrey
RECEIVING MANAGER	Howard Stogner
COMMUNICATIONS UNIT LEADER	Dean Vernon
COMMUNICATIONS TECH	Janet Moser
BASE CAMP MANAGER	Steve Kelly
SECURITY MANAGER	Thomas McDermott
MEDICAL UNIT LEADER	Mike Lund / Edna Flores (t)
MEDICAL UNIT LEADER	
FOOD UNIT LEADER	Jack Carpenter

## 10. FINANCE SECTION

CHIEF	Sandra Imler-Jacquez
DEPUTY CHIEF	Wanda Gallegos*
TIME UNIT LEADER	Sonya Yara
PERSONNEL TIME RECORDER	Susanne Kolikant / Barbara Ortega (t)
COST UNIT LEADER	Michelle Rosssbach
COMPENSATION/CLAIMS UNIT	Paul Golden
EQUIPMENT TIME RECORDER	Joann Gomez / Luella Dickerson


PREPARED BY (Planning Section Chief)

Heather Gonzalez PSC2 (t)

\* Virtual Position



## FIRE BEHAVIOR FORECAST

FORECAST NUMBER: 6	TYPE OF FIRE: Wildfire
FIRE NAME: Salt and Griffin Fires	OPERATIONAL PERIOD: DAY Operations, 08/24/2020
DATE ISSUED: 08/23/20	TIME ISSUED: 19:00
UNIT: Tonto National Forest – Globe R.D.	SIGNED: FBAN – Dan Pearson 

### INPUTS

**WEATHER SUMMARY:** T-storm development is likely again today, primarily between 1600-1900.

Temperatures are expected to be a few degrees warmer each day and humidity will be slightly drier, but 20' winds are predicted to be less than the last few days. Impacts from isolated storms will include very gusty outflow winds, possible lightning, and brief heavy downpours.

**EXCESSIVE HEAT WARNING IN EFFECT FROM 1000 MONDAY THROUGH 2000 TUESDAY**

**Sky Condition:** Mostly sunny **Temp:** 94-102° **Humidity (min):** 16-20% **Chnc of Precip:** 20% **Haines:** 5 Mod.  
**Winds:** Southwest winds 5 -7 mph with gusts to 17 in the afternoon **LAL:** 1 in the am then 2 in pm

### OUTPUTS

#### FIRE BEHAVIOR

##### GENERAL:

**Summary** – Moderate overnight humidity recovery and the scattered rainfall will minimize fire activity until late morning (1200). Expect the transition to begin in mid-slope grasses around noon before general fire activity picks up in the afternoon. In the mid to late afternoon, watch for cells building over the Mogollon Rim to the northeast because of **outflow winds** which will drastically and quickly increase fire behavior.

**Fuels** – Sonoran Desert/Desert Grasslands – Fully cured heavy grass crop, including invasive grasses have resulted in a continuous available fuel bed allowing fire to sustain growth even in the absence of strong winds or steep terrain.

- Upper shrublands - Expect all fuels to be available with live FM in the mid 50-70% range for Oak and Manzanita. Mesquite and juniper clumps often contain continuous grasses and torch easily contributing embers for, generally short-range, spot fires.

**General fire characteristics** – Conditions represent active fire behavior based on predicted afternoon conditions.

**GRASS Head Fire** – ROS: 25-50 ch/hr; FL 2-4 ft, **Backing/Flanking Fire** ROS – 1-3 ch/hr, FL-1-3 ft

**GRASS-BRUSH Head Fire** – ROS: 15-35 ch/hr; FL 5-8 ft, **Backing/Flanking Fire** ROS – 2-10 ch/hr, FL-2-4 ft

**BRUSH Head Fire** – ROS: 5-20 ch/hr; FL 8-15 ft, **Backing/Flanking Fire** ROS – 1-3 ch/hr, FL-4-8 ft

**CHAPARRAL Head Fire** – ROS: 20-40 ch/hr; FL 5-15 ft, **Backing/Flanking Fire** ROS – 5-9 ch/hr, FL-2-10 ft

##### SPECIFIC:

**Griffin Fire** – Fire activity is likely to be in two areas today. On the southern portion of the fire, expect continued active fire growth within Brushy Basin moving northeast towards Sycamore Creek as well as continued backing south towards Champion Creek. Fire behavior is likely to be characterized as a steady active flank of fire in the southern portion due to the grass/scattered brush fuel type and relatively gentle topography. On the northern portion, fuels likely need at least another drying day after the precipitation on Saturday to regain momentum through the heavier brushy fuels so primarily smoldering and creeping fire is expected.

**Salt Fire** – Interior unburned island continuing to burn out primarily on the southeastern and southern perimeters. Watch for outflow winds which will likely shift wind direction from westerly to northerly or easterly and increase the speed significantly.

##### AIR OPERATIONS:

Hazy conditions in the morning may limit aviation effectiveness, but condition should improve after 1100.

##### SAFETY – Transitions

Watch for changing conditions – slope reversals, fuel type changes, and shifting/increasing winds. These all indicate a high probability in rapidly changing fire behavior. Observe and plan accordingly before engaging.



**Salt-Griffin Fires****Day Shift****08/24/2020**

Expect storm activity over the Mogollon Rim and the White Mountains to produce gusty outflow winds. If the outflow winds make it to the fire, the best time frame would be between 1500 to 1900. This will also be the best time frame for storms near or over the fire. The strength of the outflow will depend on whether additional storms can form into central Gila County, but brief gusts 30-40 mph are possible. While there's better than a 50% chance of outflow wind shift sweeping across the area, the chance of wetting rains is only in the 20% range. Thunderstorms and outflow chances Monday will likely be similar to that of the past couple days.

**Salt Fire**

MONDAY...

Sky/weather.....Mostly sunny. Slight chance of showers and thunderstorms in the afternoon.  
CWR.....0 percent in the morning becoming 20 percent in the afternoon.  
Max temperature.....92-99.  
Min humidity.....19-26 pct.  
Wind (20 ft).....North winds 5 to 8 mph in the morning becoming southwest 5 to 7 mph with gusts to around 17 mph in the afternoon. Gusty and erratic winds expected near thunderstorms in the afternoon with potential for abrupt northeast outflow.  
LAL.....1 in the morning becoming 2 in the afternoon.  
High Level Haines...5 Moderate

**Griffin Fire**

MONDAY...

Sky/weather.....Mostly sunny. Slight chance of showers and thunderstorms in the afternoon.  
CWR.....0 percent in the morning becoming 20 percent in the afternoon.  
Max temperature.....94-99.  
Min humidity.....16-21 pct.  
Wind (20 ft).....Light east-northeast winds in the morning becoming southwest with gusts to around 15 mph in the afternoon. Gusty and erratic winds expected near thunderstorms in the afternoon with potential for abrupt northeast outflow.  
LAL.....1 in the morning becoming 2 in the afternoon.  
High Level Haines...5 Moderate

[illegible]



<b>PLANNING OPERATIONS:</b> <b>Gabriel Holguin</b> <b>Tobe Haught (t)</b>		<b>FIELD OPERATIONS:</b> <b>Manuel Martinez</b> <b>Chris Kirby (t)</b>		<div style="background-color: black; color: white; padding: 5px; font-weight: bold; font-size: 1.2em;">DIVISION W/L/T</div>		
<b>3. INCIDENT NAME:</b> <div style="font-size: 1.5em; font-weight: bold; margin-top: 10px;">SALT</div>			<b>4. OPERATIONAL PERIOD</b> DATE: <b>August 24, 2020</b> TIME: <b>Day: 0700-2100</b>			
<b>5. OPERATIONS PERSONNEL</b>						
BRANCH I DIRECTOR <u>Bob Arthur</u> DIVISION/GROUP SUPERVISOR <u>Zac Massey</u>			AIR TACTICAL GROUP SUPERVISOR <u>Gary Daniel</u>			
<b>6. RESOURCES ASSIGNED THIS PERIOD</b>						
STRIKE TEAM/TASK FORCE RESOURCE DESIGNATOR	Last Shift	LEADER	NUMBER PERSONS	DROP OFF PT./TIME	PICK UP PT./TIME	
ENG4 – Sundance E-12	8/31	Dana Law	3	ICP/ 0700	ICP/ 2100	
ENG4 – Roc-N-R E-17	9/2	Jim LaSalle	3	ICP/ 0700	ICP/ 2100	
ENG6 – L & A Wildfire E-1	9/5	Josh Wagner	3	ICP/ 0700	ICP/ 2100	
ENG6 – Fire Trax E-2	9/6	Dennis Barcus	3	ICP/ 0700	ICP/ 2100	
WTS3 – Curfman E-45	9/1	Rick Doerner	1	ICP/ 0700	ICP/ 2100	
TFLD O-12	9/2	Marvin Roybal	1	ICP/ 0700	ICP/ 2100	
AMBU – Tri City E-1	9/1	Matt Redondo	2	ICP/ 0700	ICP/ 2100	
<b>7. CONTROL OPERATIONS:</b>  <u>Task:</u> Monitor and secure fire edge. Monitor fire along Highway 288 and Highway 188 to Division P break. Identify suppression repair needs. <u>Purpose:</u> Keep fire within designated containment area. Protect Communities of Roosevelt to the West and Rock House to the North. Protect Forest resources. <u>End State:</u> Community of Wheatfields is protected and fire growth to the East and South to Division P break is halted. Fire is kept East of 288 and South of Highway 188 and Values are protected. Repair needs are identified and communicated to SITL.						
<b>8. SPECIAL INSTRUCTIONS:</b>  <ul style="list-style-type: none"> <li>Ensure LCES, Test Communications and utilize human repeaters and Air Attack if needed.</li> <li>Contact OPS prior to initiating any firing activity.</li> <li>San Carlos Apache Reservation is Tribal Land. The land is significantly special to the Tribe to be treated with respect for all natural resources. All resources such as, antlers, plants and minerals, cannot be removed and must remain on in place on the land.</li> <li>Any personnel working on San Carlos Tribal Lands are required to complete a COVID screening. See COVID officer after briefing daily.</li> </ul>						
<b>9. DIVISION/GROUP COMMUNICATIONS SUMMARY</b>						
FUNCTION	CHANNEL	RX FREQ N/W	RX TONE/NAC	TX FREQ N/W	TONE	MODE
See Communications Plan						
PREPARED BY (RESOURCES UNIT LEADER) Dave Isackson		APPROVED BY (PLANNING SECTION CHIEF) Jeff Hickerson		DATE 08/23/2020	TIME 2000	

<b>PLANNING OPERATIONS:</b> <b>Gabriel Holguin</b> <b>Tobe Haught (t)</b>		<b>FIELD OPERATIONS:</b> <b>Manuel Martinez</b> <b>Chris Kirby (t)</b>		<div style="font-size: 1.5em; font-weight: bold;">DIVISION A</div>		
<b>3. INCIDENT NAME:</b> <div style="font-size: 1.2em; font-weight: bold;">GRIFFIN</div>			<b>4. OPERATIONAL PERIOD</b> DATE: <b>August 24, 2020</b> TIME: <b>Day: 0700-2100</b>			
<b>5. OPERATIONS PERSONNEL</b>						
BRANCH II DIRECTOR <u>Leroy Holguin</u> DIVISION/GROUP SUPERVISOR <u>Josh Beason</u>			AIR TACTICAL GROUP SUPERVISOR <u>Gary Daniel</u>			
<b>6. RESOURCES ASSIGNED THIS PERIOD</b>						
STRIKE TEAM/TASK FORCE RESOURCE DESIGNATOR	Last Shift	LEADER	NUMBER PERSONS	DROP OFF PT./TIME	PICK UP PT./TIME	
CRW1 – Geronimo IHC C-2	8/31	Mario Dia	21	ICP/ 0700	ICP/ 2100	
ENG6 – TNF 1226	8/30	Thomas Weider	3	ICP/ 0700	ICP/ 2100	
ENG6 – USFWS 2163 E-61	9/4	Shawn Sullivan	4	ICP/ 0700	ICP/ 2100	
ENG6 – Fire Ant 13 E-13	9/1	Zach Anthis	3	ICP/ 0700	ICP/ 2100	
WT 1 – Dynamite E-8	9/1	David Ballard	2	ICP/ 0700	ICP/ 2100	
DOZ2 – Advanced Earthworks E-18	9/1	Derek Winterton	1	ICP/ 0700	ICP/ 2100	
MAST2 – Parker E-90	9/1	Kyle Parker	2	ICP/ 0700	ICP/ 2100	
MAST2 – Parker E-22	9/3	Dave	2	ICP/ 0700	ICP/ 2100	
TFLD O-13	9/2	Dough Niemwaski	1	ICP/ 0700	ICP/ 2100	
SOF2 O-17	9/2	Steve Hensel	1	ICP/ 0700	ICP/ 2100	
REMS – Sedona O-1	9/1	Greg Eberlein	4	ICP/ 0700	ICP/ 2100	
<b>7. CONTROL OPERATIONS:</b>  <u>Task:</u> Continue any necessary burnout operations West along the 220 Road to the 219 Road. Continue to monitor and hold burnout operations East to Zulu break. <u>Purpose:</u> To halt fire spread to the South. <u>End State:</u> Fire Spread to the South is stopped.						
<b>8. SPECIAL INSTRUCTIONS:</b> <ul style="list-style-type: none"> <li>Ensure LCES, Test Communications and utilize human repeaters and Air Attack if needed.</li> <li>Contact OPS prior to initiating any firing activity.</li> <li>San Carlos Apache Reservation is Tribal Land. The land is significantly special to the Tribe to be treated with respect for all natural resources. All resources such as, antlers, plants and minerals, cannot be removed and must remain on in place on the land.</li> <li>Any personnel working on San Carlos Tribal Lands are required to complete a COVID screening. See COVID officer after briefing daily.</li> </ul>						
<b>9. DIVISION/GROUP COMMUNICATIONS SUMMARY</b>						
FUNCTION	CHANNEL	RX FREQ N/W	RX TONE/NAC	TX FREQ N/W	MODE	
See Communications Plan						
PREPARED BY (RESOURCES UNIT LEADER) Dave Isackson		APPROVED BY (PLANNING SECTION CHIEF) Jeff Hickerson		DATE 08/23/2020	TIME 2000	



<b>PLANNING OPERATIONS:</b> <b>Gabriel Holguin</b> <b>Tobe Haught (t)</b>		<b>FIELD OPERATIONS:</b> <b>Manuel Martinez</b> <b>Chris Kirby (t)</b>		<div style="background-color: black; color: white; padding: 5px; font-weight: bold; font-size: 1.2em;">DIVISION D</div>		
<b>3. INCIDENT NAME:</b>  <b>GRIFFIN</b>			<b>4. OPERATIONAL PERIOD</b> <b>DATE: August 24, 2020</b> <b>TIME: Day: 0700-2100</b>			
<b>5. OPERATIONS PERSONNEL</b>						
BRANCH II DIRECTOR <u>Leroy Holguin</u> DIVISION/GROUP SUPERVISOR <u>JJ Rue</u>			AIR TACTICAL GROUP SUPERVISOR <u>Gary Daniel</u>			
<b>6. RESOURCES ASSIGNED THIS PERIOD</b>						
STRIKE TEAM/TASK FORCE RESOURCE DESIGNATOR	Last Shift	LEADER	NUMBER PERSONS	DROP OFF PT./TIME	PICK UP PT./TIME	
CRW1 – Mesa IHC C-1	8/30	Tyler Chesarek	22	ICP/ 0700	ICP/ 2100	
ENG6 – Nat. Wildland Fire 631 E-5	9/3		3	ICP/ 0700	ICP/ 2100	
ENG6 – J3 Contracting 15 E-15	9/2	John Piety	3	ICP/ 0700	ICP/ 2100	
MAST3 – Parker E-89	9/1	Bobby Hardman	2	ICP/ 0700	ICP/ 2100	
TFLD O-24	9/2	Dirch Foreman	1	ICP/ 0700	ICP/ 2100	
SOF2 O-17	9/2	Steve Hensel	1	ICP/ 0700	ICP/ 2100	
AMBU – Superstition E-5	9/3	Jason Chapman	2	ICP/ 0700	ICP/ 2100	
Medic Team – Wilderness 1 O-14	9/2	Matt Siggins	2	ICP/ 0700	ICP/ 2100	

**7. CONTROL OPERATIONS:**  
  
Task: Utilize direct suppression tactics to secure fire edge.  
Purpose: Protect multiple Ranch structures and Electronic site.  
End State: Fire is kept West of FR 303, fire progression to the North is stopped and Values are protected.

**8. SPECIAL INSTRUCTIONS:**

- Ensure LCES, Test Communications and utilize human repeaters and Air Attack if needed.
- Contact OPS prior to initiating any firing activity.
- San Carlos Apache Reservation is Tribal Land. The land is significantly special to the Tribe to be treated with respect for all natural resources. All resources such as, antlers, plants and minerals, cannot be removed and must remain on in place on the land.
- Any personnel working on San Carlos Tribal Lands are required to complete a COVID screening. See COVID officer after briefing daily.

9. DIVISION/GROUP COMMUNICATIONS SUMMARY						
FUNCTION	CHANNEL	RX FREQ N/W	RX TONE/NAC	TX FREQ N/W	TONE	MODE
See Communications Plan						

<b>PREPARED BY (RESOURCES UNIT LEADER)</b> Dave Isackson	<b>APPROVED BY (PLANNING SECTION CHIEF)</b> Jeff Hickerson	<b>DATE</b> 08/23/2020	<b>TIME</b> 2000
---	---	---------------------------	---------------------

<b>PLANNING OPERATIONS:</b> <b>Gabriel Holguin</b> <b>Tobe Haught (t)</b>		<b>FIELD OPERATIONS:</b> <b>Manuel Martinez</b> <b>Chris Kirby (t)</b>		<b>DIVISION H</b>		
<b>3. INCIDENT NAME:</b> <b>GRIFFIN</b>			<b>4. OPERATIONAL PERIOD</b> DATE: <b>August 24, 2020</b> TIME: <b>Day: 0700-2100</b>			
<b>5. OPERATIONS PERSONNEL</b> BRANCH II DIRECTOR <u>Leroy Holguin</u> AIR TACTICAL GROUP SUPERVISOR <u>Gary Daniel</u> DIVISION/GROUP SUPERVISOR <u>Brandon Glenn/Adrian Porchas</u>						
<b>6. RESOURCES ASSIGNED THIS PERIOD</b>						
STRIKE TEAM/TASK FORCE RESOURCE DESIGNATOR	Last Shift	LEADER	NUMBER PERSONS	DROP OFF PT./TIME	PICK UP PT./TIME	
CRW1 – Sacramento IHC C-1	8/25	Matt Barone	19	ICP/ 0700	ICP/ 2100	
CRW1 – Black Mesa IHC C-4	8/30	Frank Auza	21	ICP/ 0700	ICP/ 2100	
T2IA – Safford C-2	8/30	Kress Sanders	19	ICP/ 0700	ICP/ 2100	
T2IA – San Carlos 1			20	ICP/ 0700	ICP/ 2100	
San Carlos Fire Use			10	ICP/ 0700	ICP/ 2100	
San Carlos Fire Module			5	ICP/ 0700	ICP/ 2100	
ENG4 – Arrow Fire E-16	9/2	David Bowden	3	ICP/ 0700	ICP/ 2100	
ENG6 – J3 Contracting 14 E-14	9/3	Chad Lawson	3	ICP/ 0700	ICP/ 2100	
ENG6 – Globe Fire Brush 305 E-59	9/2	Sterling White	2	ICP/ 0700	ICP/ 2100	
ENG6 – Grey 15 E-62	9/2	Jerry Racicot	3	ICP/ 0700	ICP/ 2100	
ENG6 – J3 Contracting 12			3	ICP/ 0700	ICP/ 2100	
ENG6 – Timber Ridge 118			3	ICP/ 0700	ICP/ 2100	
ENG6 – Dust Control 310			3	ICP/ 0700	ICP/ 2100	
DOZ2 – 1			1	ICP/ 0700	ICP/ 2100	
DOZ2 – 2			1	ICP/ 0700	ICP/ 2100	
WTS2 – Fort Valley E-21	9/2	Steve Piper	1	ICP/ 0700	ICP/ 2100	
WTS2 – Sundance Fire E-15				ICP/ 0700	ICP/ 2100	
HEQB		Dustin Cromwell	1	ICP/ 0700	ICP/ 2100	
TFLD O-11	9/1	S. Brainard	1	ICP/ 0700	ICP/ 2100	
TFLD (t) O-10	9/1	John Powers	1	ICP/ 0700	ICP/ 2100	
TFLD (t) O-106		Michael Gutierrez	1	ICP/ 0700	ICP/ 2100	
SOF2 O-17	9/2	Steve Hensel	1	ICP/ 0700	ICP/ 2100	
Medic Team – Heber O-9	9/2	Jeff Purinton	2	ICP/ 0700	ICP/ 2100	



**7. CONTROL OPERATIONS:**

**Task:** Utilize direct suppression tactics to secure fire edge.  
**Purpose:** Protect Community of 7 Mile, Ceremonial Grounds at Highway Tank and timber resources.  
**End State:** Fire perimeter is kept as small as possible and Values at risk are protected.

**8. SPECIAL INSTRUCTIONS:**

- Ensure LCES, Test Communications and utilize human repeaters and Air Attack if needed.
- Contact OPS prior to initiating any firing activity.
- San Carlos Apache Reservation is Tribal Land. The land is significantly special to the Tribe to be treated with respect for all natural resources. All resources such as, antlers, plants and minerals, cannot be removed and must remain on in place on the land.
- Any personnel working on San Carlos Tribal Lands are required to complete a COVID screening. See COVID officer after briefing daily.

**9. DIVISION/GROUP COMMUNICATIONS SUMMARY**

FUNCTION	CHANNEL	RX FREQ N/W	RX TONE/NAC	TX FREQ N/W	TONE	MODE
See Communications Plan						

PREPARED BY (RESOURCES UNIT LEADER)  
Dave Isackson

APPROVED BY (PLANNING SECTION CHIEF)  
Jeff Hickerson

DATE  
08/23/2020

TIME  
2000

<b>PLANNING OPERATIONS:</b> <b>Gabriel Holguin</b> <b>Tobe Haught (t)</b>		<b>FIELD OPERATIONS:</b> <b>Manuel Martinez</b> <b>Chris Kirby (t)</b>		<div style="background-color: black; color: white; padding: 10px; font-size: 1.2em; font-weight: bold;">DIVISION Z</div>		
<b>3. INCIDENT NAME:</b> <div style="font-size: 1.2em; font-weight: bold;">GRIFFIN</div>			<b>4. OPERATIONAL PERIOD</b> <b>DATE: August 24, 2020</b> <b>TIME: Day: 0700-2100</b>			
<b>5. OPERATIONS PERSONNEL</b> <div style="display: flex; justify-content: space-between;"> <span>BRANCH II DIRECTOR <u>Leroy Holguin</u></span> <span>AIR TACTICAL GROUP SUPERVISOR <u>Gary Daniel</u></span> </div> <div style="display: flex; justify-content: space-between;"> <span>DIVISION/GROUP SUPERVISOR <u>Ricardo Romero</u></span> </div>						
6. RESOURCES ASSIGNED THIS PERIOD						
STRIKE TEAM/TASK FORCE RESOURCE DESIGNATOR	Last Shift	LEADER	NUMBER PERSONS	DROP OFF PT./TIME	PICK UP PT./TIME	
ENG6 – Timberline 14	9/2	Dave Bregtia	3	ICP/ 0700	ICP/ 2100	
ENG6 – Fire Ant 6	E-4 9/1	Dave Hall	3	ICP/ 0700	ICP/ 2100	
WTS3 – Dust Control 310	E-7 9/1	Adam Weinstein	1	ICP/ 0700	ICP/ 2100	
DOZ2 – Parker	E-1 8/30	Randy Sullivan	2	ICP/ 0700	ICP/ 2100	
Medic Team – Mesa	O-12 8/31	Jimmy Maloney	2	ICP/ 0700	ICP/ 2100	

<b>7. CONTROL OPERATIONS:</b>  <u>Task:</u> Continue to assess Values at risk and prep as necessary. <u>Purpose:</u> Protect Old Winters Ranch, McMillianville and Winters, <u>End State:</u> Fire is kept West of Highway 60 and Values are protected.	
---	--

<b>8. SPECIAL INSTRUCTIONS:</b>  <ul style="list-style-type: none"> <li>Ensure LCES, Test Communications and utilize human repeaters and Air Attack if needed.</li> <li>Contact OPS prior to initiating any firing activity.</li> <li>San Carlos Apache Reservation is Tribal Land. The land is significantly special to the Tribe to be treated with respect for all natural resources. All resources such as, antlers, plants and minerals, cannot be removed and must remain on in place on the land.</li> <li>Any personnel working on San Carlos Tribal Lands are required to complete a COVID screening. See COVID officer after briefing daily.</li> </ul>	
---	--

9. DIVISION/GROUP COMMUNICATIONS SUMMARY						
FUNCTION	CHANNEL	RX FREQ N/W	RX TONE/NAC	TX FREQ N/W	TONE	MODE
See Communications Plan						

<b>PREPARED BY (RESOURCES UNIT LEADER)</b> Dave Isackson	<b>APPROVED BY (PLANNING SECTION CHIEF)</b> Jeff Hickerson	<b>DATE</b> 08/23/2020	<b>TIME</b> 2000
---	---	---------------------------	---------------------



<b>PLANNING OPERATIONS:</b> Gabriel Holguin Tobe Haught (t)		<b>FIELD OPERATIONS:</b> Manuel Martinez Chris Kirby (t)		<h2 style="margin:0;">Initial Attack GROUP</h2>		
<b>3. INCIDENT NAME:</b> <h3 style="margin:0;">SALT/GRIFFIN</h3>			<b>4. OPERATIONAL PERIOD</b> DATE: <b>August 24, 2020</b> TIME: <b>Day: 0700-2100</b>			
<b>5. OPERATIONS PERSONNEL</b>						
DIVISION/GROUP SUPERVISOR <u>Darrel Miller</u>			AIR TACTICAL GROUP SUPERVISOR <u>Gary Daniel</u>			
<b>6. RESOURCES ASSIGNED THIS PERIOD</b>						
STRIKE TEAM/TASK FORCE RESOURCE DESIGNATOR	Last Shift	LEADER	NUMBER PERSONS	DROP OFF PT./TIME	PICK UP PT./TIME	
ENG4 – Sundance 10	9/1	Anthony Beeley	3	ICP/ 0700	ICP/ 2100	
ENG6 – L & A Wildfire E-63	9/5	Larry Martinez	3	ICP/ 0700	ICP/ 2100	
ENG6 – Eagle 6 E-76	9/5	Harry Wheeler	3	ICP/ 0700	ICP/ 2100	
ENG6 – Western Fire E-74	9/5	Derrick Holdstock	3	ICP/ 0700	ICP/ 2100	
ENG6 – 3 Rivers E-75	9/5	William Perlman	3	ICP/ 0700	ICP/ 2100	
ENG6 – Tanto Basin Brush 641 E-57	9/2	Lavery	3	ICP/ 0700	ICP/ 2100	
Wilderness 1 O-14	9/3	Matt Siggins	3	ICP/ 0700	ICP/ 2100	

**7. CONTROL OPERATIONS:**  
Task: Respond to new fire starts within the TFR.  
Purpose: Provide Initial Attack support to local zone.  
End State: New fires are contained in a timely manner.

**8. SPECIAL INSTRUCTIONS:**

- San Carlos Apache Reservation is Tribal Land. The land is significantly special to the Tribe to be treated with respect for all natural resources. All resources such as, antlers, plants and minerals, cannot be removed and must remain on in place on the land.
- Any personnel working on San Carlos Tribal Lands are required to complete a COVID screening. See COVID officer after briefing daily.

9. DIVISION/GROUP COMMUNICATIONS SUMMARY						
FUNCTION	CHANNEL	RX FREQ N/W	RX TONE/NAC	TX FREQ N/W	TONE	MODE
See Communications Plan						

<b>PREPARED BY (RESOURCES UNIT LEADER)</b> Dave Isackson	<b>APPROVED BY (PLANNING SECTION CHIEF)</b> Jeff Hickerson	<b>DATE</b> 08/23/2020	<b>TIME</b> 2000
---	---	---------------------------	---------------------

[illegible]

PLANNING OPERATIONS:  
Gabriel Holguin  
Tobe Haught (t)

FIELD OPERATIONS:  
Paul Delmerico

## DIVISION Night Griffin

3. INCIDENT NAME:

**GRIFFIN**

4. OPERATIONAL PERIOD

DATE: **August 24-25, 2020**

TIME: **Day: 1730-0730**

5. OPERATIONS PERSONNEL

DIVISION/GROUP SUPERVISOR **Steve Grater**

AIR TACTICAL GROUP SUPERVISOR

6. RESOURCES ASSIGNED THIS PERIOD

STRIKE TEAM/TASK FORCE RESOURCE DESIGNATOR	Last Shift	LEADER	NUMBER PERSONS	DROP OFF PT./TIME	PICK UP PT./TIME
ENG3 – Pine Strawberry Brush 413		Thomas Cordova	3	ICP/1730	ICP/0730
ENG6 – Tri City E405 E-60	9/1	Howell	3	ICP/1730	ICP/0730
ENG6 – Eagle 3 E-12	9/2	K. Lester	3	ICP/1730	ICP/0730
Medic Team – Scottsdale O-10	9/2	Dickie Mason	2	ICP/1730	ICP/0730

7. CONTROL OPERATIONS:

Task: Monitor and patrol Hwy 60.

Purpose: Protect private property and infrastructure on Local Ranches, including the Griffin Ranch

End State: Values are protected.

8. SPECIAL INSTRUCTIONS:

- San Carlos Apache Reservation is Tribal Land. The land is significantly special to the Tribe to be treated with respect for all natural resources. All resources such as, antlers, plants and minerals, cannot be removed and must remain in place on the land.
- Any personnel working on San Carlos Tribal Lands are required to complete a COVID screening. See COVID officer after briefing daily.

9. DIVISION/GROUP COMMUNICATIONS SUMMARY

FUNCTION	CHANNEL	RX FREQ N/W	RX TONE/NAC	TX FREQ N/W	TONE	MODE
See Communications Plan						

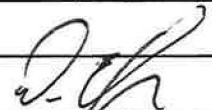
PREPARED BY (RESOURCES UNIT LEADER)  
Dave Isackson

APPROVED BY (PLANNING SECTION CHIEF)  
Jeff Hickerson

DATE  
08/23/2020

TIME  
1630



INCIDENT RADIO COMMUNICATIONS PLAN I-205				1. INCIDENT NAME		2. DATE/TIME PREPARED		3. OPERATIONAL PERIOD DATE/TIME			
				SALT		8-23-2020 1900		8-24/25-2020 0700-0700			
4. BASIC RADIO CHANNEL UTILIZATION											
Ch #	Function	Channel Name	Assignment	RX Freq	N/W	RX Tone/NAC	TX Freq	N/W	TX Tone/NAC	Mode Analog (A) Digital (D) Mixed (M)	Remarks
1	TAC 1	TAC 1	DIV A	b7e & b7f	N	b7e & b7f	b7e & b7f	N	b7e & b7f	A	
2	TAC 2	TAC 2	DIV H		N			N		A	
3	TAC 3	TAC 3	DIV Z		N			N		A	
4	TAC 4	TAC 4	DIV L,W,T		N			N		A	
5	TAC 5	TAC 5	DIV IA		N			N		A	
6	TAC 6	TAC 6	DIV D,P		N			N		A	
7	VFIRE 21	VFIRE 21			N			N		A	
8	COMMAND 8	COMMAND 8	Command		N			N		A	
9	COMMAND 9	COMMAND 9	Command		N			N		A	
10	FN 1/IA	TNF FIRENET FN1/IA			N			N		A	Tonto National Forrest Fire IA
11	FN 2	TNF FIRENET FN2			N			N		A	
12	VMED 28	VMED 28	ALL DIV		N			N		A	emergency air medivac air to ground
13	Air to Ground Primary	A/G Primary	ALL DIV		N			N		A	Primary air to ground
14	Air to Ground Secondary	A/G Secondary	ALL DIV		N			N		A	secondary air to ground
15					N			N		A	
16	AIRGUARD	AIRGUARD			N			N		A	
5. Special Instructions:											
6. I-205 Prepared By: Communications Unit Leader				Name: Dean Vernon COML				Signature: 			



# SAFETY MESSAGE

*Fire fighter safety comes first on every fire, every time*



We are **ALL** accountable for **SAFE** behaviors!

For Day Operations: **August 24, 2020**

**INCIDENT:** Salt/Griffin Fires

**Date Prepared:** August 23, 2020 **TIME:** 14:00

## Major Hazards and Risks:

- **Driving/Roads:** Use caution on all roads. Watch for muddy conditions and wash outs on secondary roads.
- **Fire Weather:** Watch for changing conditions associated with high temperatures and strong, shifty winds from thunder storms.
- **Covid-19 Avoidance** - Please continue to wash hands, wear masks, and utilize social distancing.
- **Medivac Procedures:** Take the time to review the Medical Plan/Medical Incident Report and know exactly how to proceed before an injury occurs.
- **Helicopter Operations:** Review Aviation Watch-Out Situations in IRPG page 44.

**Be alert. Keep calm. Think clearly. Act decisively.**

## Safety Considerations

- *Are we monitoring current and predicted fire weather conditions? Are we prepared for the predicted fire behavior possibilities?*
- *Are we prepared to deal with a medical emergency?*
- *Have conditions in our work environments changed from those predicted or expected?*
- *Are we willing to adjust tactics and operations to SAFELY accommodate changing or changed conditions?*



- Utilize Social Distancing Standards when outside of your module: 6 feet minimum
- Utilize Face Covering when interacting with people outside your module. This should not interfere with immediate need operations.
- Wash hands for a minimum of 20 seconds and utilize hand sanitizer when hand washing is not available.

## NARRATIVE:

### Planning using PACE

PACE is an acronym (Primary, Alternate, Contingency and Emergency) used initially for military communication system planning but has benefits relative to fire operational planning. Planning for the worst case scenario allows wildfire operations personnel to be prepared for any eventuality even though things might go exactly as planned.

Defined, PACE is:

- **Primary** – the routine and most effective operational approach. (anchor, flank, pinch, secure)
- **Alternate** – another common method of wildfire strategy/tactics with minimal or no additional impact. May be used along with the primary under normal circumstances. (Supporting crews and engines with aviation, heavy equipment, etc.)
- **Contingency** – This method will normally not be as convenient or efficient as the first two methods, but is capable of achieving objectives when necessary. (Emergency Equipment Rental Agreements, out of GACC resources, etc.)
- **Emergency** – This is a method of last resort that probably has significant negative impacts or will create significant delays. (Transitioning to a higher complexity team)

**SAFETY OFFICERS:**

**Don Muise/Gary Strickland (T)**

*Don Muise*

<b>AIR OPERATIONS SUMMARY 220</b>		Prepared By: Brian Drinville	Prepared: 08/23/2020	Prepared Time: 1700 hrs.		
<b>1. INCIDENT NAME:</b> Salt – Griffin	<b>2. OPERATIONAL PERIOD</b> 08/24/2020	<b>START TIME:</b> 0700	<b>END TIME:</b> 2000	<b>SUNRISE:</b> 0552	<b>SUNSET:</b> 1857	

<b>3. REMARKS</b> (Safety Notes, Hazards, Air Operations Special Equipment, etc.).  <p style="text-align: center;"><u><b>Leader's Intent for Aviation</b></u></p> <p><b>TASK:</b> PROVIDE AVIATION SUPPORT TO CREWS WITH WATER/RETARDANT DROPS AND RECONNAISSANCE FLIGHTS FOR OPERATIONS PERSONNEL WHILE ENSURING SAFE AVIATION OPERATIONS.</p> <p><b>PURPOSE:</b> KEEP FIRE FROM PROGRESSING TOWARDS IDENTIFIED VALUES (I.E. HOMES, PRIVATE PROPERTY, CULTURAL SITES, POWERLINE ETC.).</p> <p><b>END STATE:</b> PROVIDE A SECURE FIRE PERIMETER TO PROTECT AND MINIMIZE THREATS TO PRIVATE LAND AND COMMUNITIES WHILE MINIMIZING UNNECESSARY EXPOSURE TO FIREFIGHTERS AND THE PUBLIC.</p> <p style="text-align: center;"><i>High, Hot and Heavy!</i></p>	<b>4. READY ALERT AIRCRAFT:</b>  Helicopter Extractions DPS 800-247-6337 Medivac See Medical Plan in the IAP	<b>5. TFR:</b> 0/6290
---	---	--------------------------

6. PERSONNEL	NAME	PHONE #	7. FREQUENCIES	AM	FM	8. FIXED-WING Avail/ Type/ Make-Model/ N#/ Base
AOBD	Brian Drinville	b6	b7e & b7f	b7e & b7f		AIRTANKERS: ORDER THRU ATGS
ASGS	Albert Newman					ATGS Platforms:
HEBM	Bert Smith				b7e & b7f	30S–King Air 200 (ATGS: )
ATGS	Gary Daniel					
National Guard manager	Jeff Quick					
					b7e & b7f	
						PIFC Aviation Desk: 480-457-1552

**9. HELICOPTERS** (Use Additional Sheets as Necessary)

FAA N#	TY	MAKE/ MODEL	BASE	START	AVAIL	REMARKS	FAA N#	TY	MAKE/ MODEL	BASE	START	AVAIL	REMARKS
H70K	1	UH-60	Cutter	0700	0800	Water Drops	Red Hawk 900	1	UH-60	Grapevine	0800	0900	Water drops
4TH	1	K Max	Cutter	0700	0800	Water Drops	Red Hawk 081	1	UH-60	Grapevine	0800	0900	Water drops
6AS	3	407HP	Cutter	0700	0800	Recon/IA							





# MEDICAL PLAN (ICS 206 WF)

<b>1. Incident/Project Name</b>				<b>2. Operational Period</b>				
<b>Salt / Griffin</b>				Date/Time: <b>August 24-25 2020 Day/Night</b>				
<b>3. Ambulance Services</b>								
<b>Name</b>	<b>Complete Address</b>	<b>Phone &amp; EMS Frequency</b>		<b>Advanced Life Support (ALS)</b> Yes No				
San Carlos EMS/Fire	101 Medicine Way Rd. San Carlos AZ	928-475-2388 928-475-2389		✓				
Tri-City FD & Ambulance Service	Canyon Station: 1300 Jesse Hays, Globe AZ Station 11: 4280 E. Broadway, Claypool AZ	480-816-7521 VFIRE 21		✓				
<b>4. Air Ambulance Services</b>								
<b>Name</b>	<b>Phone</b>	<b>Type of Aircraft &amp; Capability</b>						
PHI Air Medical	1-800-321-9522	A-Star Rotor. ALS. Night Capable						
Native Air	1-800-642-7828	A-Star Rotor. ALS. Night Capable						
DPS Ranger	1-800-247-6337	Bell-407 Rotor. Short Haul. Hoist. Night Capable						
<b>5. Hospitals</b>								
<b>Name</b> <b>Complete Address</b>	<b>GPS Datum – WGS 84</b> <b>Coordinate Standard</b> <b>Degrees Decimal Minutes</b> <b>DD° MM.MMM' N - Lat</b> <b>DD° MM.MMM' W - Long</b>		<b>Travel Time</b> <b>Air Gnd</b>		<b>Phone</b>	<b>Helipad</b> <b>Yes No</b>		<b>Level of Care Facility</b>
Cobre Valley Regional Medical Center 5880 S. Hospital Drive Globe, AZ 85501	<b>Lat:</b>	N 33° 24.377	10	20	<b>ER</b> <b>928-402-1182</b>  <b>Patch Phone</b> <b>928-425-4993</b>	<input checked="" type="checkbox"/>	<input type="checkbox"/>	Level 4 Trauma
	<b>Long:</b>	W 110° 49.635						
	<b>VHF:</b>							
Scottsdale Osborne Honorhealth Medical Center 7400 E. Scottsdale Rd. Scottsdale, AZ 85251	<b>Lat:</b>	N 33° 29.347	30	120	<b>602-344-5726</b>	<input checked="" type="checkbox"/>	<input type="checkbox"/>	Level 1 Trauma
	<b>Long:</b>	W 111° 55.325						
	<b>VHF:</b>							
Maricopa Medical Center 2601 E. Roosevelt Phoenix, AZ 85008	<b>Lat:</b>	N 33° 27.39	35	90	<b>ER</b> <b>602-344-5411</b>	<input checked="" type="checkbox"/>	<input type="checkbox"/>	Level 1 Trauma Burn Center
	<b>Long:</b>	W 112° 01.46						
	<b>VHF:</b>	b7e & b7f						
<b>6. Division   Branch   Group</b>			<b>Area Location Capability</b>					
<b>Branch I</b> <b>Div</b> <b>W / L / T</b>			<b>EMS Responders &amp; Capability:</b>		Tri-City Ambulance 928-200-8233			
			<b>Equipment Available on Scene:</b>		Advanced Life Support (ALS) equipment and drugs.			
			<b>Medical Emergency Channel:</b>		Command (Ch. 8/9)      Air to ground: VMED 28 (Ch. 12)			
			<b>ETA for Ambulance to Scene:</b>					
			<b>Air:</b>					
			<b>Ground:</b>		30 min.			
			<b>Approved Helispot:</b>		No			
			<b>Lat:</b>					
<b>Branch I</b> <b>Div P</b>			<b>Long:</b>					
			<b>EMS Responders &amp; Capability:</b>		Sunsites Medics 520-456-6899			
			<b>Equipment Available on Scene:</b>		Advanced Life Support (ALS) equipment and drugs.			
			<b>Medical Emergency Channel:</b>		Command (Ch. 8/9)      Air to ground: VMED 28 (Ch. 12)			
			<b>ETA for Ambulance to Scene:</b>					
			<b>Air:</b>					
			<b>Ground:</b>		30 min.			
			<b>Approved Helispot:</b>		No			
<b>Lat:</b>								
<b>Long:</b>								

6. Division   Branch   Group	Area Location Capability	
<b>Branch II Div A</b>	<b>EMS Responders &amp; Capability:</b>	Sedona REMS Team 602-573-7161
	<b>Equipment Available on Scene:</b>	Advanced Life Support (ALS) equipment & drugs. Ropes Rescue. UTV
	<b>Medical Emergency Channel:</b>	Command (Ch. 8/9) Air to ground: VMED 28 (Ch. 12)
	<b>ETA for Ambulance to Scene:</b>	
	<b>Air:</b>	
	<b>Ground:</b>	45 min.
	<b>Approved Helispot:</b>	No
	<b>Lat:</b>	
	<b>Long:</b>	
<b>Branch II Div D</b>	<b>EMS Responders &amp; Capability:</b>	Superstition Ambulance 480-981-1890
	<b>Equipment Available on Scene:</b>	Advanced Life Support (ALS) equipment and drugs
	<b>Medical Emergency Channel:</b>	Command (Ch. 8/9) Air to ground: VMED 28 (Ch. 12)
	<b>ETA for Ambulance to Scene:</b>	
	<b>Air:</b>	
	<b>Ground:</b>	20 min.
	<b>Approved Helispot:</b>	No
	<b>Lat:</b>	
	<b>Long:</b>	
<b>Branch II Div H</b>	<b>EMS Responders &amp; Capability:</b>	Heber Medics 928-242-4446
	<b>Equipment Available on Scene:</b>	Advanced Life Support (ALS) equipment and drugs. UTV
	<b>Medical Emergency Channel:</b>	Command (Ch. 8/9) Air to ground: VMED 28 (Ch. 12)
	<b>ETA for Ambulance to Scene:</b>	
	<b>Air:</b>	
	<b>Ground:</b>	
	<b>Approved Helispot:</b>	No
	<b>Lat:</b>	
	<b>Long:</b>	
<b>Branch II Div Z</b>	<b>EMS Responders &amp; Capability:</b>	Mesa Medics 480-567-8172
	<b>Equipment Available on Scene:</b>	Advanced Life Support (ALS) equipment and drugs. UTV
	<b>Medical Emergency Channel:</b>	Command (Ch. 8/9) Air to ground: VMED 28 (Ch. 12)
	<b>ETA for Ambulance to Scene:</b>	
	<b>Air:</b>	
	<b>Ground:</b>	10 mins.
	<b>Approved Helispot:</b>	Yes
	<b>Lat:</b>	N 33° 31.88
	<b>Long:</b>	W 110° 45.82
<b>IA</b>	<b>EMS Responders &amp; Capability:</b>	Wilderness 1 Medics 602-330-3769
	<b>Equipment Available on Scene:</b>	Advanced Life Support (ALS) equipment and drugs
	<b>Medical Emergency Channel:</b>	Command (Ch. 8/9) Air to ground: VMED 28 (Ch. 12)
	<b>ETA for Ambulance to Scene:</b>	
	<b>Air:</b>	
	<b>Ground:</b>	
	<b>Approved Helispot:</b>	No
	<b>Lat:</b>	
	<b>Long:</b>	
<b>Night Salt</b>	<b>EMS Responders &amp; Capability:</b>	Wilderness 2 Medics 608-695-3202
	<b>Equipment Available on Scene:</b>	Advanced Life Support (ALS) equipment and drugs
	<b>Medical Emergency Channel:</b>	Command (Ch. 8/9) Air to ground: VMED 28 (Ch. 12)
	<b>ETA for Ambulance to Scene:</b>	
	<b>Air:</b>	
	<b>Ground:</b>	
	<b>Approved Helispot:</b>	No
	<b>Lat:</b>	
	<b>Long:</b>	
<b>Night Griffin</b>	<b>EMS Responders &amp; Capability:</b>	Scottsdale Medics 480-560-9832
	<b>Equipment Available on Scene:</b>	Advanced Life Support (ALS) equipment and drugs. UTV
	<b>Medical Emergency Channel:</b>	Command (Ch. 8/9) Air to ground: VMED 28 (Ch. 12)
	<b>ETA for Ambulance to Scene:</b>	
	<b>Air:</b>	
	<b>Ground:</b>	
	<b>Approved Helispot:</b>	No
	<b>Lat:</b>	
	<b>Long:</b>	

7. Name & Location		Remote Camp Location(s)		
<b>ICP</b>	<b>EMS Responders &amp; Capability:</b>		Mike Lund MEDL 575-770-6694 Edna Flores MEDL(t) 575-494-3997	
	<b>Equipment Available on Scene:</b>		EMTs within management team	
	<b>Medical Emergency Channel:</b>		Advanced Life Support (ALS) equipment and drugs, AED	
	<b>ETA for Ambulance to Scene:</b>		911 A/G: VMED 28 (Ch. 12)	
	<b>Air:</b>			
	<b>Ground:</b>		10 mins	
	<b>Approved Helispot:</b>		15 mins	
	<b>Lat:</b>		Yes	
<b>Long:</b>		N 33° 25.04		
8. Prepared By (Medical Unit Leader)		9. Date/Time	10. Reviewed By (Safety Officer)	11. Date/Time
Mike Lund MEDL Edna Flores MEDL (t) <i>Edna Flores</i>		8-23-2020 1852	Don Muise SOF Gary Strickland SOF(t) <i>[Signature]</i>	8-23-2020 1852





**SOUTHWEST  
INCIDENT MANAGEMENT  
TEAM 5**  
MARK BERNAL, INCIDENT COMMANDER

---

**To:** All Incident Personnel for the Salt and Griffin Fires

**From:** Mark Bernal, Incident Commander

**Subject:** Ethical Behavior and Conduct

Southwest Area Incident Management Team 5 is committed to the highest principles of ethical behavior and conduct. This team fully adheres to the laws and policies regarding discrimination, harassment, hazing, and other inappropriate behavior, including drugs and alcohol use.

I expect all personnel assigned to this incident to carry themselves with the utmost level of honesty, integrity, and professionalism. Fostering and investing in relationships is important; be mindful of your interactions with the public, including posting incident-related information on social media (videos, photos, texts, etc.).

I would like to acknowledge each of you who have answered the call to public service and come to this fire. Your willingness to step away from your families during such complex times and issues to humanity do not go unnoticed. It is difficult not to have a degree of feeling about COVID-19, social distancing, unfair treatment of our fellow citizens, and now fire. I call on each of you to heighten your mindfulness to stress management, mutual respect, and safety-first behavior.

I am committed to the belief that everyone is entitled to a safe and harassment-free work environment throughout the entire duration of the assignment. Equally, our behaviors must reflect a safety-first attitude.

Your actions reflect upon all of us.

Sincerely,

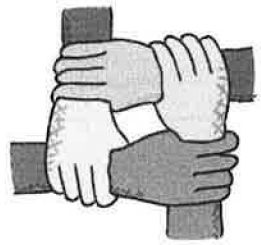
*Mark Bernal*

---

**Mark Bernal**  
Incident Commander  
Southwest Interagency Management Team 5



## HUMAN RESOURCES MESSAGE



### ***Goose Fact***

Geese honk from behind to encourage those up front to keep up the speed.

When a goose is incapacitated and falls out of formation, two geese fall out with it to help and protect it. They stay together until the goose can fly again, launching out on their own to catch up with their

### ***Goose Lesson***

*Encouragement from the ranks leads to greater efficiencies in leadership.*

*People with goose sense stand by each other in times of adversity and challenge, recognizing the point is to achieve the goal safely and understanding they are a part of a larger effort.*

If the team wins, we all had a good year. If we don't win, it doesn't matter who had a good year.

-Paul O'Neill

***David Legrand, HRSP***

***505.218.1189***

***HR located in ICP***

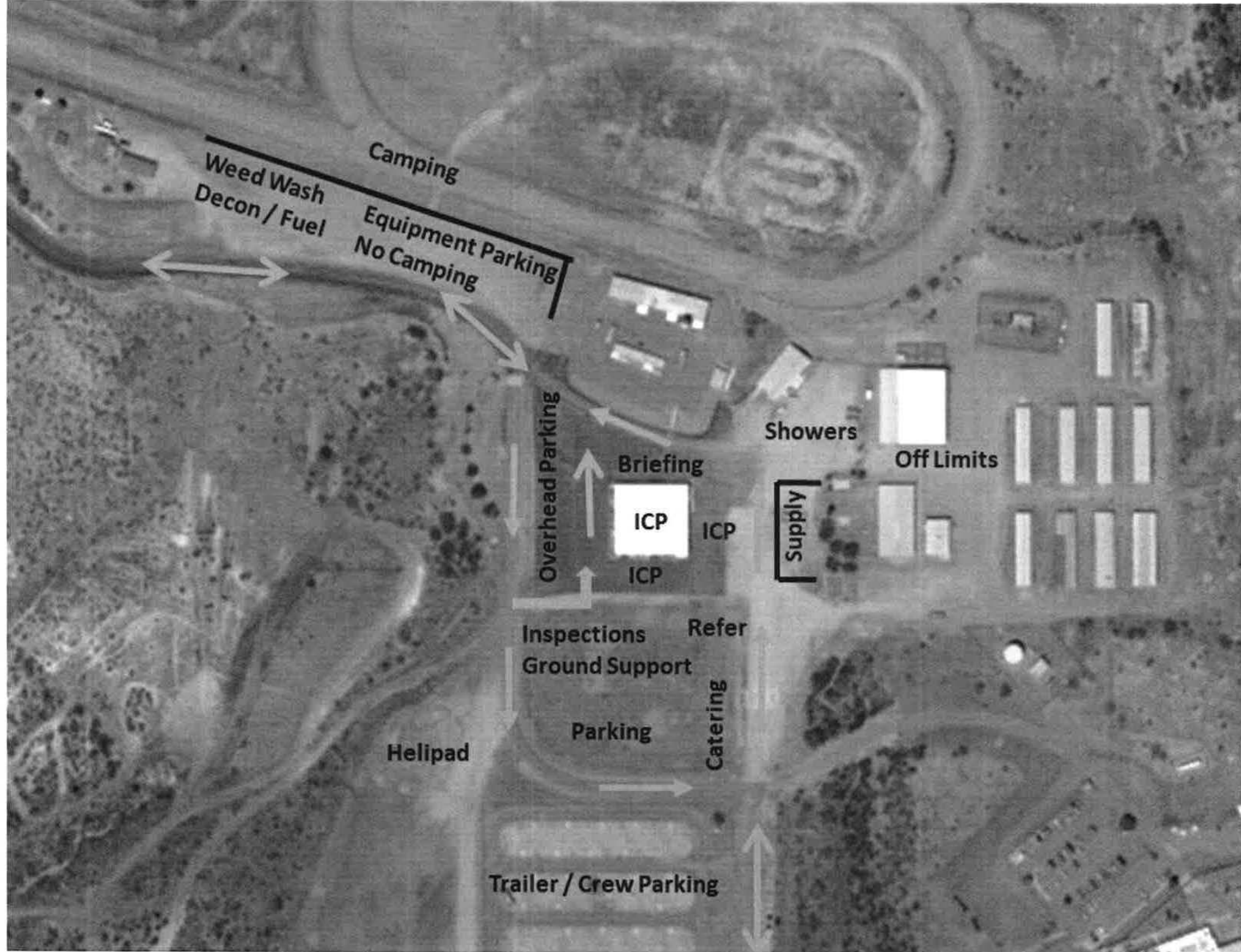
### ***\*\*HR QUIZ\*\****

***How is this true?***

$$11 \div 2 = 6$$

***If you can figure it out, stop by HR for a prize!!!!***







# Southwest Incident Team 5

## LINE SUPPLY ORDER FORM

(Division Supervisor / OPBD / OSC Only)

Date & Time Order was Placed		Order Reference # (DIV + #)	Mode of Delivery (Ground / Helo / Pickup)	Location for Delivery (Div / LZ / DP / Lat Long)
Date:			GROUND SUPPORT	
Time:			HELICOPTER	
DATE NEEDED:			TO BE PICKED UP BY @ (Date/Time)	
Order Received in COMMUNICATIONS by:			Name:	Time:
Order Received in SUPPLY by:			Name:	Time:
Order Received in GROUND SUPPORT by:			Name:	Time:
Order Received in HELIBASE by:			Name:	Time:
Order Delivered/Shipped to Final Location by:			Name:	Time:

Line #	Qty	NFES #	Item	Shipped	Pending	Line #	Qty	NFES #	Item	Shipped	Pending
1			Breakfast - Meals			43		000137	Nozzles, 1 1/2", each Plastic		
2			Lunch - Meals			44		000138	Nozzles, 1", each Plastic		
3			Dinner - Meals			45		000136	Nozzles, 3/4", each Garden Hose		
4		001842	MRE's (# of cases) 12/case			46		001143	1st Aid Kit, 20 Person, each		
5		000048	Cubies of Water, ea			47		000340	Chainsaw w/kit, each		
6			Bottled of Water, # of cases			<b>Hose lay Kit - 1/2 mile</b> <b>CONTENTS:</b>					
7			Sports Drink, # of cases								
8		000030	Batteries, AA (# of cases) 192 AA's/case			1		000870	1 MKIII Pump w/kit		
9a		000033	Batteries, D (# of bx) 12ea/bx			15		Gal	Unleaded Fuel, in 5 gal cans		
9b			Batteries, AAA - each			2		000341	2 - Cycle Oil, Quart		
10			Fuel, Unleaded, Gallons			30		001239	Hose, 1 1/2" x 100'		
11			Fuel, Diesel, Gallons			15		001238	Hose, 1" x 100'		
12			Fuel, Drip Torch, Gal 60/40 Mix			20		001016	Hose, 3/4" x 50'		
13			Bar Oil, Quarts			15		000231	Gated Wyes, 1 1/2"		
14	Multiple		2 - Cycle Oil, 2.6fl oz / Quart			8		000259	Gated Wyes, 1"		
15		000022	Sleeping Bags, 20 Degree, ea			10		000904	Gated Wyes 3/4"		
16		001062	Sleeping Bags, 45 Degree, ea			15		000138	Nozzels, 1"		
17		000143	Plastic Sheeting, 16' wide x length (ft)			10		000136	Nozzels, 3/4"		
18		001285	Parachute Cord - Spool or Feet needed			15		000010	Reducers, 1 1/2" - 1"		
19		000171	Shovels, ea			10		000733	Reducers 1" - 3/4"		
20		000146	Pulaski's, ea			<b>Hose lay Kit - 1/4 mile</b> <b>CONTENTS:</b>					
21		001180	Combi's, ea								
22		000296	McLeod's, ea			20		001239	Hose, 1 1/2" x 100'		
23		000105	Fusee, box			10		001238	Hose, 1" x 100'		
24		000241	Drip Torch, Filled* / Empty (circle one) Ratio _____ :			20		001016	Hose, 3/4" x 50'		
25		001149	Backpack Pump, Filled / Empty			10		000231	Gated Wyes, 1 1/2"		
26		000437	Slingable Blivet, Suppression 55 gal			5		000259	Gated Wyes, 1"		
27		000435	Slingable Blivet, Drinking 55 gal			10		000904	Gated Wyes 3/4"		
28		000661	Folding Tank 1000 gal (PFK Only)			10		000138	Nozzels, 1"		
29			Pumpkin 1800 / 3000 / 4800 / 6000 gal (circle one)			10		000136	Nozzels, 3/4"		
30		000870	Mark III Pump w/kit			10		000010	Reducers, 1 1/2" - 1"		
31		000670	Lightweight Pump w/kit			5		000733	Reducers 1" - 3/4"		
32		006041	Volume Pump w/kit			<b>Line SPIKE Kit (22 people)</b>					
33		001239	Hose 1 1/2" x 100', roll								
34		001238	Hose 1" x 100', roll			3	Cases	AA batteries (192 batteries/case)			
35		001016	Hose 3/4" x 50', roll			10	Cubies	Cubies of Water (5 gal / Cubie)			
36		000010	Reducer 1 1/2" - 1", each			10	Rolls	Rolls of Toilet Paper			
37		000733	Reducer 1" - 3/4", each			6	Cases	MRE's (12 meals per case)			
38		000231	Gated Wyes 1 1/2", each			20	Each	Trash Bags			
39		000259	Gated Wyes 1", each								
40		000904	Gated Wyes 3/4", each								
41		000835	Shutoff Valve, 3/4", each								
42		000230	In-Line Tee, 1 1/2" x 1", each								

Note: If the team is in Arizona PFK will service otherwise SFK will service. Some items not carried by SFK may not be available.

\* - Line 24 Drip torches will be mixed 70% Diesel 30% Gas unless otherwise specified

**WILL SOMEONE BE AT THE DELIVERY / LOCATION TO SIGN THE WAYBILL? YES / NO**



SAW PART REQUEST					
CREW NAME					
RESOURCE #		REQUEST DATE			
CONTACT NAME		DIVISION			
PHONE #		Needed Date & Time			
EMAIL:					
DIVISION APPROVAL					
SAW INFORMATION					
MAKE	STIHL _____ HUSQVARNA _____ OTHER _____				
MODEL					
BAR LENGTH	20"    22"    24"    28"    30"    32"    36"				
QUANTITY	PART NAME & NUMBER				S #
# of DRIVERS	Please indicate 1 <sup>st</sup> 2 <sup>nd</sup> 3 <sup>rd</sup> choice if #1 choice is not available				
PITCH (*)	¼" _____ 3/8 _____ .325 _____ .404 _____ ¾ _____				
GAUGE	.043 _____ .050 _____ .058 _____ .063 _____				
TOOTH LAYOUT	FULL _____ SEMI-SKIP _____ FULL SKIP _____				
TOOTH CUT	CHISEL _____ MICRO CHISEL _____ SEMI CHISEL _____ CHAMFER-CHISEL _____				
#Sprocket Teeth (*)					
DAMAGED BAR REPLACEMENT	NEED PROPERTY LOSS OR DAMAGE REPORT FORM 288/289 FULLY COMPLETED THROUGH ALL REQUIRED STATIONS. ALSO, NEED DAMAGED BAR TURNED IN TO SUPPLY PRIOR TO OPENING NEW ONE. SUBJECT TO CHANGE PER IBA GUIDANCE				

UNIT LOG ICS-214		1. Incident Name <b>SALT AND GRIFFIN FIRES</b>	2. Date Prepared	3. Time Prepared
4. Unit Name/Designators		5. Unit Leader (Name and Position)		6. Operational Period
7. Personnel Roster Assigned				
Name	ICS Position		Home Base	
8. Activity Log				
Time	Major Events			
9. Prepared by (Name and Position)				



# MEDICAL PLAN (ICS 206 WF)

Controlled Unclassified Information//Basic

## Medical Incident Report

**FOR A NON-EMERGENCY INCIDENT, WORK THROUGH CHAIN OF COMMAND TO REPORT AND TRANSPORT INJURED PERSONNEL AS NECESSARY.**

**FOR A MEDICAL EMERGENCY: IDENTIFY ON SCENE INCIDENT COMMANDER BY NAME AND POSITION AND ANNOUNCE "MEDICAL EMERGENCY" TO INITIATE RESPONSE FROM IMT COMMUNICATIONS/DISPATCH.**

Use the following items to communicate situation to communications/dispatch.

1. **CONTACT COMMUNICATIONS / DISPATCH (Verify correct frequency prior to starting report)** Ex: "Communications, Div. Alpha. Stand-by for Emergency Traffic."
2. **INCIDENT STATUS:** Provide incident summary (including number of patients) and command structure.  
Ex: "Communications, I have a Red priority patient, unconscious, struck by a falling tree. Requesting air ambulance to Forest Road 1 at (Lat./Long.) This will be the Trout Meadow Medical, IC is TFLD Jones. EMT Smith is providing medical care."

Severity of Emergency / Transport Priority	<input type="checkbox"/> <b>RED / PRIORITY 1 Life or limb threatening injury or illness. Evacuation need is IMMEDIATE</b> Ex: Unconscious, difficulty breathing, bleeding severely, 2° – 3° burns more than 4 palm sizes, heat stroke, disoriented. <input type="checkbox"/> <b>YELLOW / PRIORITY 2 Serious Injury or illness. Evacuation may be DELAYED if necessary.</b> Ex: Significant trauma, unable to walk, 2° – 3° burns not more than 1-3 palm sizes. <input type="checkbox"/> <b>GREEN / PRIORITY 3 Minor Injury or illness. Non-Emergency transport</b> Ex: Sprains, strains, minor heat-related illness.	
Nature of Injury or Illness & Mechanism of Injury		Brief Summary of Injury or Illness (Ex: Unconscious, Struck by Falling Tree)
Transport Request		Air Ambulance / Short Haul/Hoist Ground Ambulance / Other
Patient Location		Descriptive Location & Lat. / Long. (WGS84)
Incident Name		Geographic Name + "Medical" (Ex: Trout Meadow Medical)
On-Scene Incident Commander		Name of on-scene IC of Incident within an Incident (Ex: TFLD Jones)
Patient Care		Name of Care Provider (Ex: EMT Smith)

### 3. INITIAL PATIENT ASSESSMENT: Complete this section for each patient as applicable (start with the most severe patient)

Patient Assessment: See IRPG page 106

Treatment:

### 4. TRANSPORT PLAN:

Evacuation Location (if different): (Descriptive Location (drop point, intersection, etc.) or Lat. / Long.) Patient's ETA to Evacuation Location:

Helispot / Extraction Site Size and Hazards:

### 5. ADDITIONAL RESOURCES / EQUIPMENT NEEDS:

Example: Paramedic/EMT, Crews, Immobilization Devices, AED, Oxygen, Trauma Bag, IV/Fluid(s), Splints, Rope rescue, Wheeled litter, HAZMAT, Extrication

### 6. COMMUNICATIONS: Identify State Air/Ground EMS Frequencies and Hospital Contacts as applicable

Function	Channel Name/Number	Receive (RX)	Tone/NAC *	Transmit (TX)	Tone/NAC *
COMMAND					
AIR-TO-GRND					
TACTICAL					

### 7. CONTINGENCY: Considerations: If primary options fail, what actions can be implemented in conjunction with primary evacuation method? Be thinking ahead.

### 8. ADDITIONAL INFORMATION: Updates/Changes, etc.

**REMEMBER:** Confirm ETA's of resources ordered. Act according to your level of training. Be Alert. Keep Calm. Think Clearly. Act Decisively.