

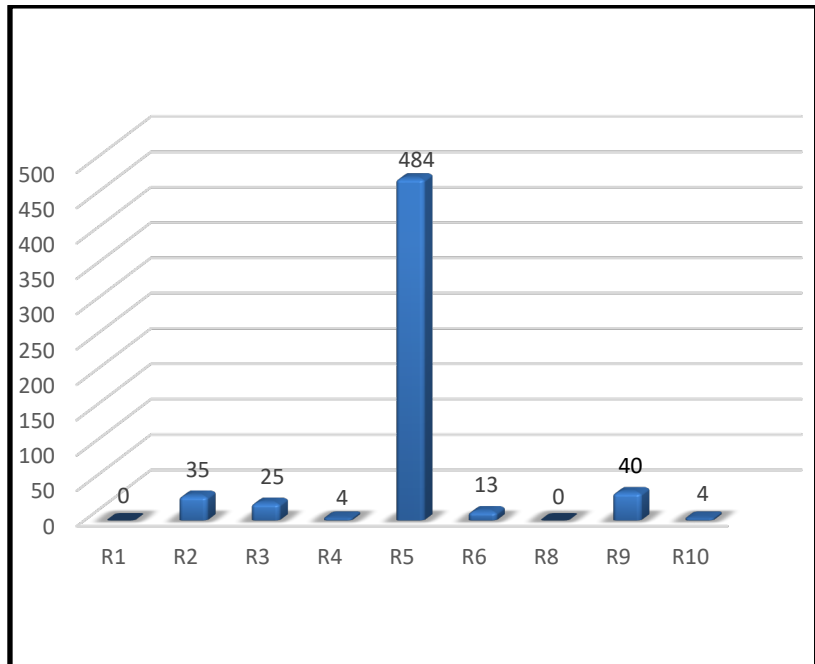
# 2024 Routine Powerline Vegetation Management Report

## Overview:

- This is a report on Forest Service responses to calendar year 2024 requests by powerline facility owners and operators to conduct routine vegetation management under approved operating plans or agreements.
- The Forest Service must annually publish this report on the Agency's website in accordance with section 512 of the Federal Land Policy and Management Act. This reporting aligns with the Agency's commitment to transparency and support for regular powerline facility management.
- The Forest Service uses the report to identify areas where additional focus may be needed to ensure staff are earnestly working with powerline facility owners and operators to provide safe and reliable electricity to the American public.
- Routine (non-emergency) vegetation management is planned action, as outlined in an approved operating plan or agreement, periodically taken to reduce or eliminate threats to powerline facilities from vegetation within or adjacent to powerline facilities rights-of-way on National Forest System lands.
- Powerline facility owner/operators made 605 requests for routine vegetation management in 2024. That was a 70 percent increase over 2023. Of the requests, 60 were for work in the Agency's [Wildfire Crisis Landscapes](#) designated in 2022 and [11 additional landscapes](#) in 2023.
- 80 percent of requests were made in the Pacific Southwest Region (California) (Fig. 1); most responses to requests were made within the timeframe specified in the operating plan or agreement (Fig. 3); and 66 percent of requests were approved as received (Fig. 4).
- Reference: [Agency forests and regional boundaries map](#).

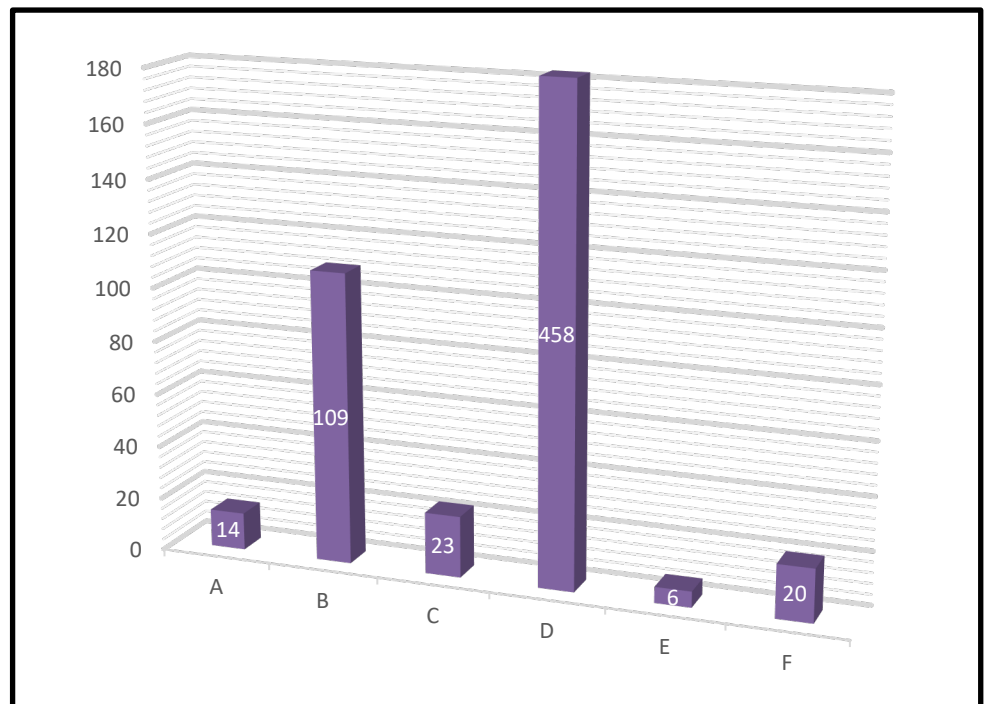
**Figure 1. Number of Requests by Region.** 605 requests for routine vegetation management were made by powerline facility owners/operators with approved operating plans or agreements. 80% of those requests were to perform work in the Pacific Southwest Region.

- (R1) Northern Region
- (R2) Rocky Mountain Region
- (R3) Southwestern Region
- (R4) Intermountain Region
- (R5) Pacific Southwest Region
- (R6) Pacific Northwest Region
- (R8) Southern Region
- (R9) Eastern Region
- (R10) Alaska Region



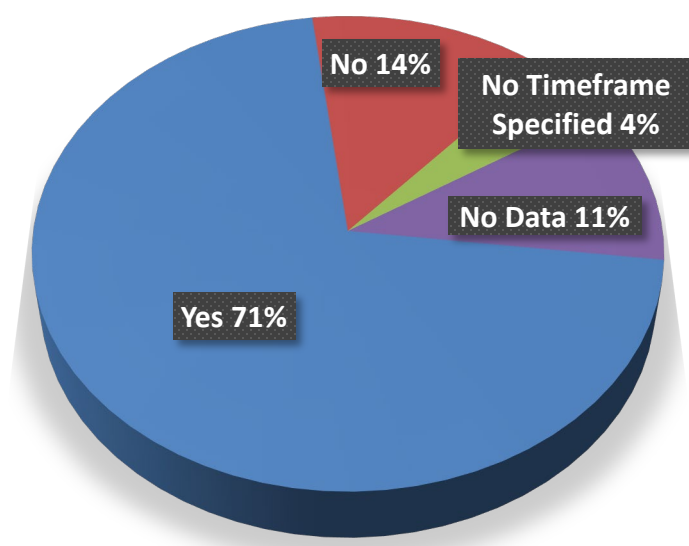
**Figure 2. Type of Routine Vegetation Management Requested.** 630 types of routine vegetation management were requested in 2024. This exceeds the total number of requests made as one request may contain multiple types of routine vegetation management.

- (A) Vegetation inspection 14
- (B) Planned vegetation clearing previously approved in an operating plan, agreement, or schedule of work 109
- (C) Touch up vegetation clearing between approved cycles without the use of pesticides or herbicides 23
- (D) Non-emergency hazard tree pruning, topping, or felling 458
- (E) Slash Management 6
- (F) Other 20



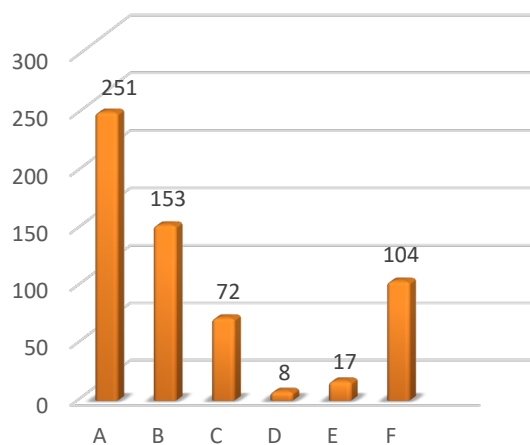
**Figure 3. Did the Forest Service respond per the timeframe specified in an approved operating plan or agreement?**

Yes	430
No	82
No Timeframe Specified	27
No Data	66



**Figure 4. Nature of the Forest Service Response.**

(A) Approved as received. Response informed powerline facility owner/operator that the activity was previously approved and did not require further approval.	251
(B) Approved as received for an activity that was not previously approved.	153
(C) Approved with mitigations.	72
(D) Response not yet made.	8
(E) Other.	17
(F) No data.	104



**Figure 5. Number of requests by priority landscape.** 60 of the 605 vegetation management requests were to perform vegetation management in priority landscapes as identified in the US Forest Service’s Wildfire Crisis Strategy. 33 of those 60 requests were to perform routine vegetation management in California.

