



Forest Order No. 17-25-12
USDA Forest Service
Pacific Southwest Region
Tahoe National Forest
Signal Peak Trail Closure

Pursuant to 16 U.S.C. § 551 and 36 C.F.R. § 261.50(a) and (b), and to provide for public safety, the following acts are prohibited within the Tahoe National Forest. This Order is effective from September 5th, 2025, through November 3rd, 2025.

1. Being on Forest Service Trail 13E58 (Signal Peak Trail), as shown on the attached map.
36 C.F.R. § 261.55(a).

Pursuant to 36 C.F.R. § 261.50(e), the following persons are exempt from this Order:

1. Any Federal, State, local officer, or member of an organization rescue or fire-fighting force in the performance of an official duty.
2. Employees and agents of Everest Infrastructure Partners, to the extent necessary to carry out work on the high voltage powerlines buried in the Signal Peak Trail.

These prohibitions are in addition to the general prohibitions found in 36 C.F.R. Part 261, Subpart A.

A violation of these prohibitions is punishable by a fine of not more than \$5,000 for an individual or \$10,000 for an organization, or imprisonment for not more than six months, or both.

16 U.S.C. § 551 and 18 U.S.C. §§ 3559, 3571, and 3581.

Done at Nevada City, California, this 4th day of September, 2025.

AMBER WATERS

Acting Forest Supervisor, Tahoe National Forest

17-25-12 EXHIBIT A FOREST ORDER MAP SIGNAL PEAK TRAIL CLOSURE

SIGNAL PEAK TRAIL (13E58)
CLOSED FOR POWERLINE MAINTENANCE

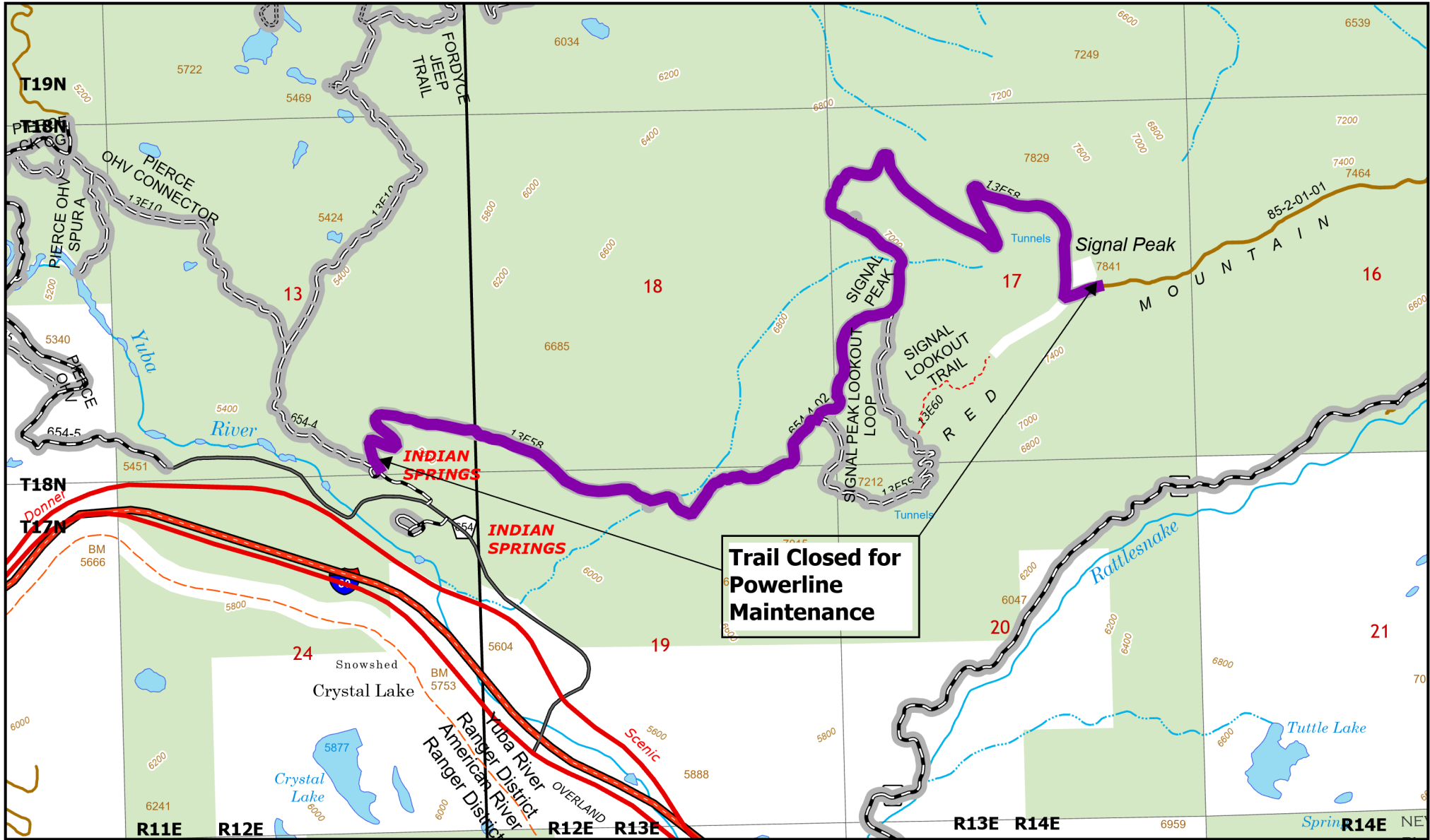
0 0.5 1 Miles

This map product is reproduced from geospatial information prepared by USDA, Forest Service. GIS data and product accuracy may vary, and be developed from sources of differing accuracy, accurate only at certain scales, based on modeling or interpretation, incomplete while being edited or revised, etc. Using GIS products for purposes other than those for which they were created may yield inaccurate results. The Forest Service reserves the right to correct, update, modify or replace GIS products without notification.



1:24,000

- Tahoe N.F.
- Other/Private
- 1 Roads Open to All Vehicles, Yearlong
- 2 Roads Open to All Vehicles, Seasonal
- 3 Roads Open to Highway Legal Vehicles Only, Yearlong
- 4 Roads Open to Highway Legal Vehicles Only, Seasonal
- 13 Interstate
- 15 Other Public Roads
- 6 Trails Open to All Vehicles, Seasonal
- 12 Special Designation, Seasonal
- Trail Closed



United States Department of Agriculture

Forest Service
Tahoe National Forest
Yuba River & Sierraville Ranger Districts

