



MOUNT ST. HELENS NATIONAL VOLCANIC MONUMENT



Know the Rules

- Disturbing or removing natural features is prohibited in all areas.

Restricted Area #1

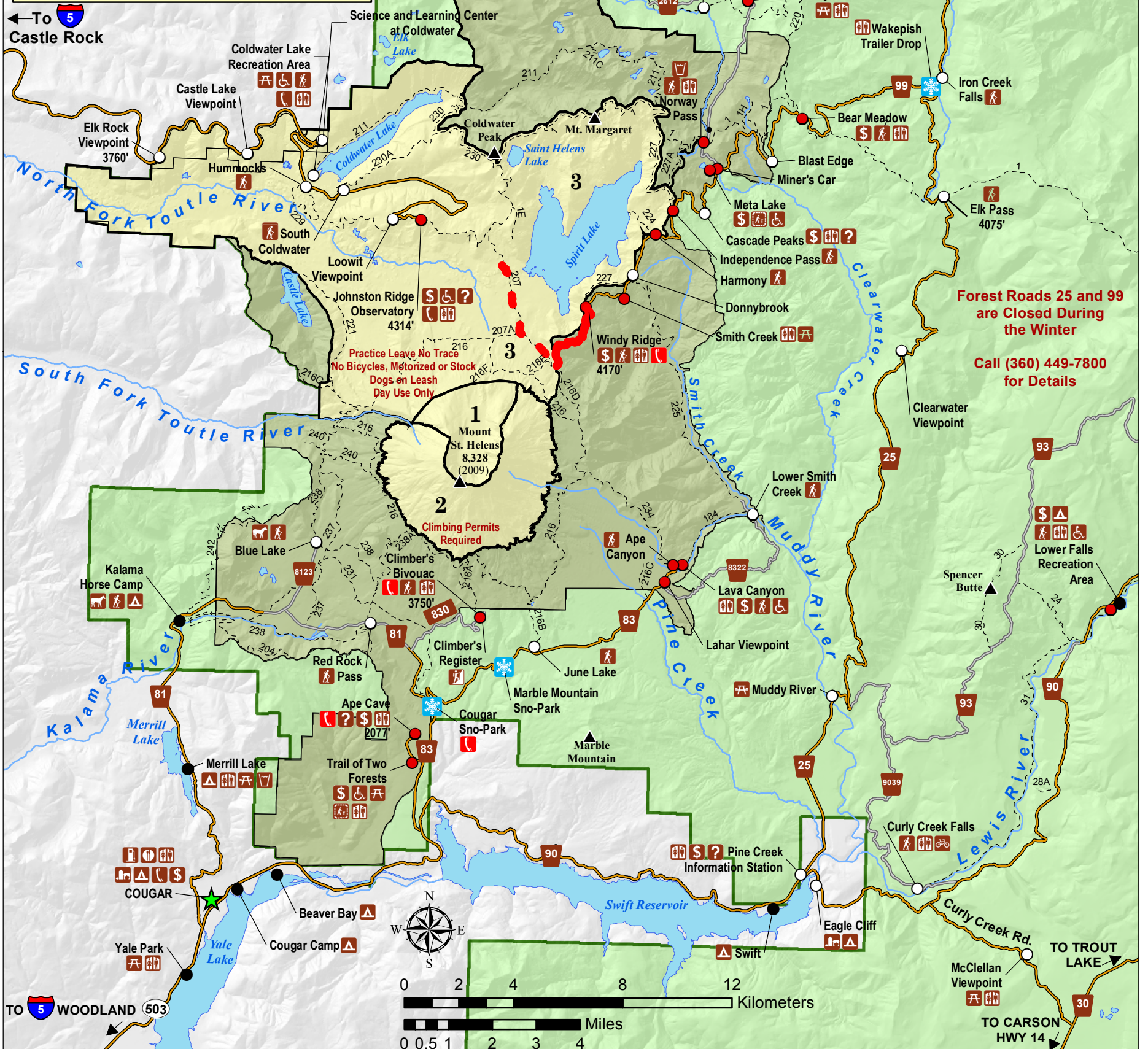
- Closed to ALL public entry.

Restricted Area #2

- Climbing permit required above 4,800 feet.

Restricted Area #3

- Day use ONLY.
- Dogs on leash only. Dogs prohibited at Johnston Ridge Observatory.
- Bicycles, horses and motorized use are prohibited. (Bikes OK on 230A to 230, east on 230 to #1, north and east on #1 to Norway Pass Trailhead only.)
- Camping and fires are prohibited.
- No aircraft or drone.



Gifford Pinchot NF

- Admin Boundary
- Mount St. Helens NVM
- Restricted Area
- Campground with Fee
- No Fees Required
- Recreation Day Pass Required
- Snowpark

Transportation

- Paved Roads
- Gravel Roads
- Dirt Roads
- Trails

Hydrography

- Major Rivers
- Major Waterbodies

Recreation

- Information
- Passes Sold
- Barrier Free
- Campground
- Trail Access
- Picnic Area
- Interpretive Trail
- Telephone

- Restrooms
- Water
- Food
- Horse Area

- Fuel
- Gift Shop
- General Store
- Emergency Call Box

2022-23 Construction Closure. Contact Monument for Current Status
Future Construction Closure, Contact Monument for Current Status

For Road and Recreation Conditions Report, go to this link:
<http://www.fs.usda.gov/giffordpinchot>

This map is intended for general reference and is approximate in general proportions.

Elevations are in feet

Printed May 2022