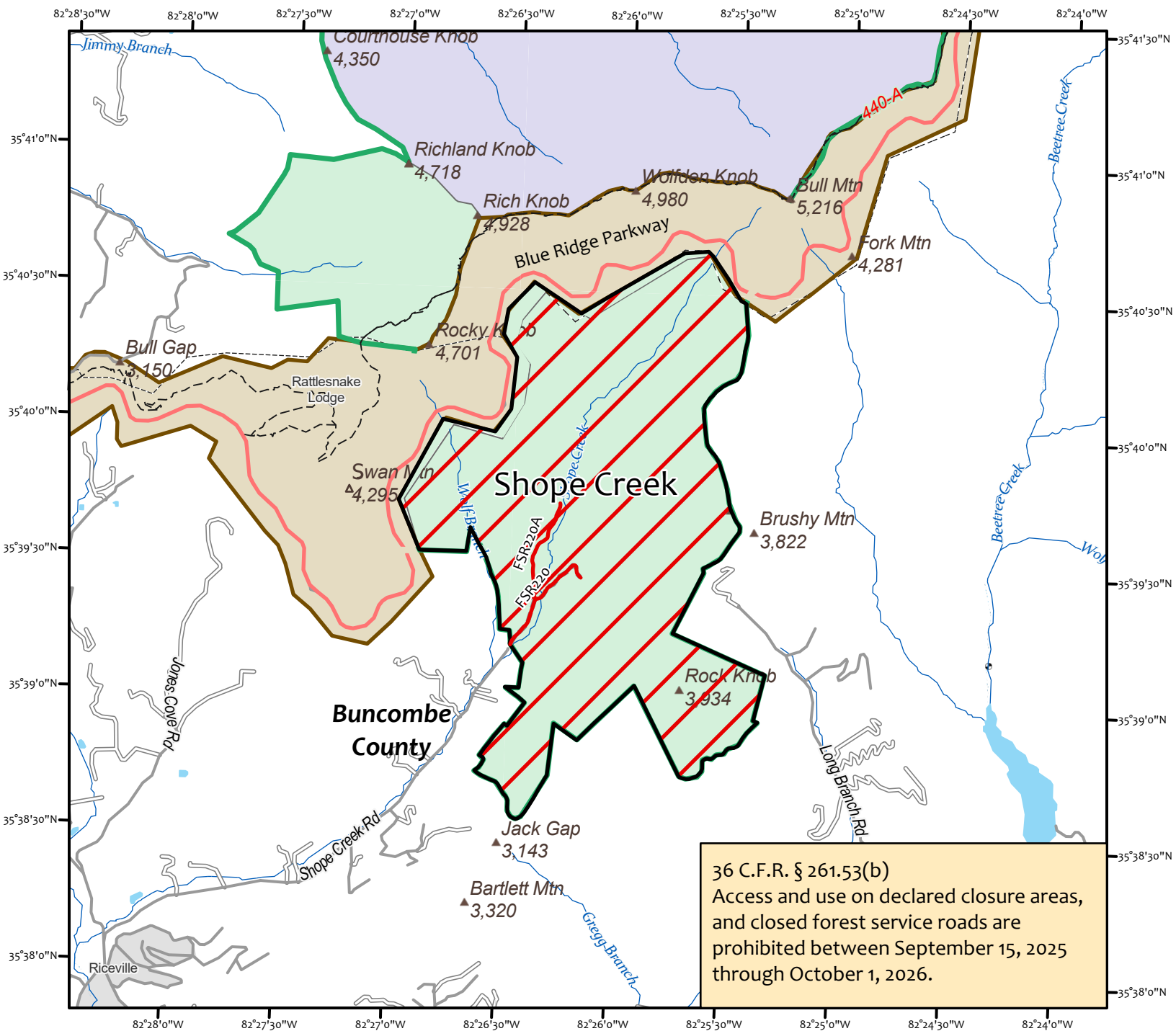




Pisgah National Forest Appalachian Ranger District Closure Order

FOREST ORDER#



Disclaimer

The USDA Forest Service uses the most current and complete data available. GIS data and product accuracy may vary. Using GIS products for purposes other than those for which they were intended may yield inaccurate or misleading results. The USDA Forest Service reserves the right to correct, update, modify, or replace GIS products without notification. This map is not a legal land line or ownership document. Public lands are subject to change and leasing, and may have access restrictions; check with local offices. Obtain permission before entering private land.

Legend

CLOSURE AREA STATUS



FS ROAD STATUS



Closed Roads

FSR 220A VERLIN SHELTON
FSR 220 SHOPE CREEK

