

**UNITED STATES DEPARTMENT OF AGRICULTURE
UNITED STATES FOREST SERVICE
OZARK-ST. FRANCIS NATIONAL FORESTS
Russellville, Arkansas**

Order No. 08-10-00-22-133

DAY USE AREAS ORDER

Pursuant to 36 CFR 261.58(e) and (g), it is hereby ordered that the prohibitions herein after set forth apply to the below listed Day Use Areas within the Ozark-St. Francis National Forests. This closure is effective until December 31, 2026 or rescinded by an authorized Forest Official, whichever occurs first.

- 1. Camping within designated day use areas. (36 CFR 261.58(e))**
- 2. Parking or leaving a vehicle in violation of a posted instructions. (36 CFR 261.58(g))**

The prohibitions apply to the following Day Use Areas:

Alum Cove
Pedestal Rock
Gray's Spring
Rotary Ann

Natural Dam
White Rock
Ozone

Pursuant to 36 CFR 261.50(e), the following persons are exempt from this order:

1. Persons with a permit specifically authorizing the otherwise prohibited act or omission.
2. Any Federal, State, or local officer or member of an organized rescue or fire fighting force in the performance of an official duty.

Executed in Russellville, Arkansas, this 1 day of August 2022.



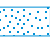

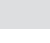


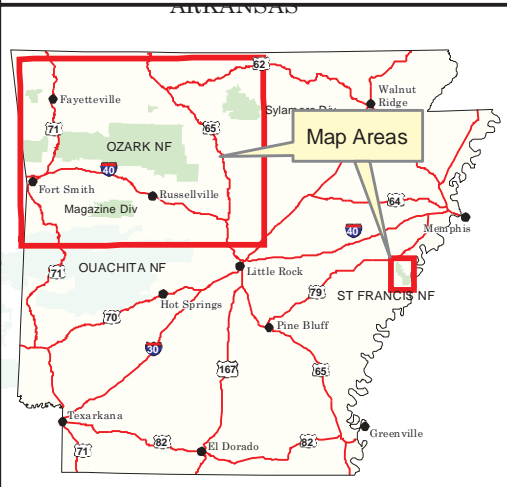
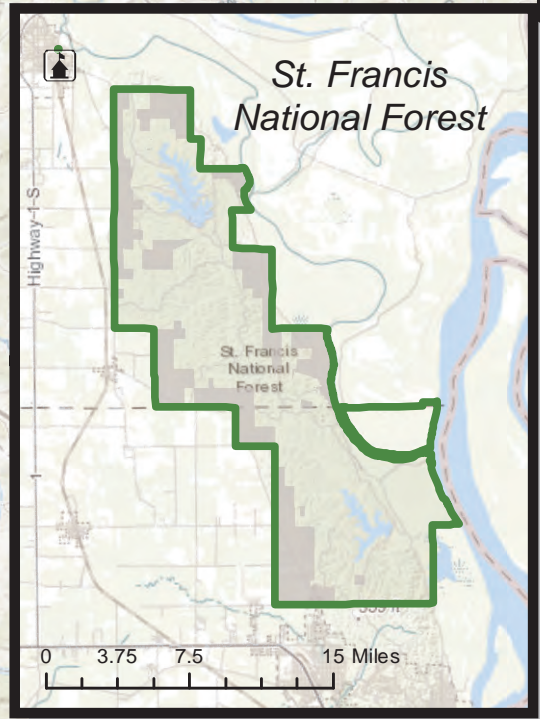
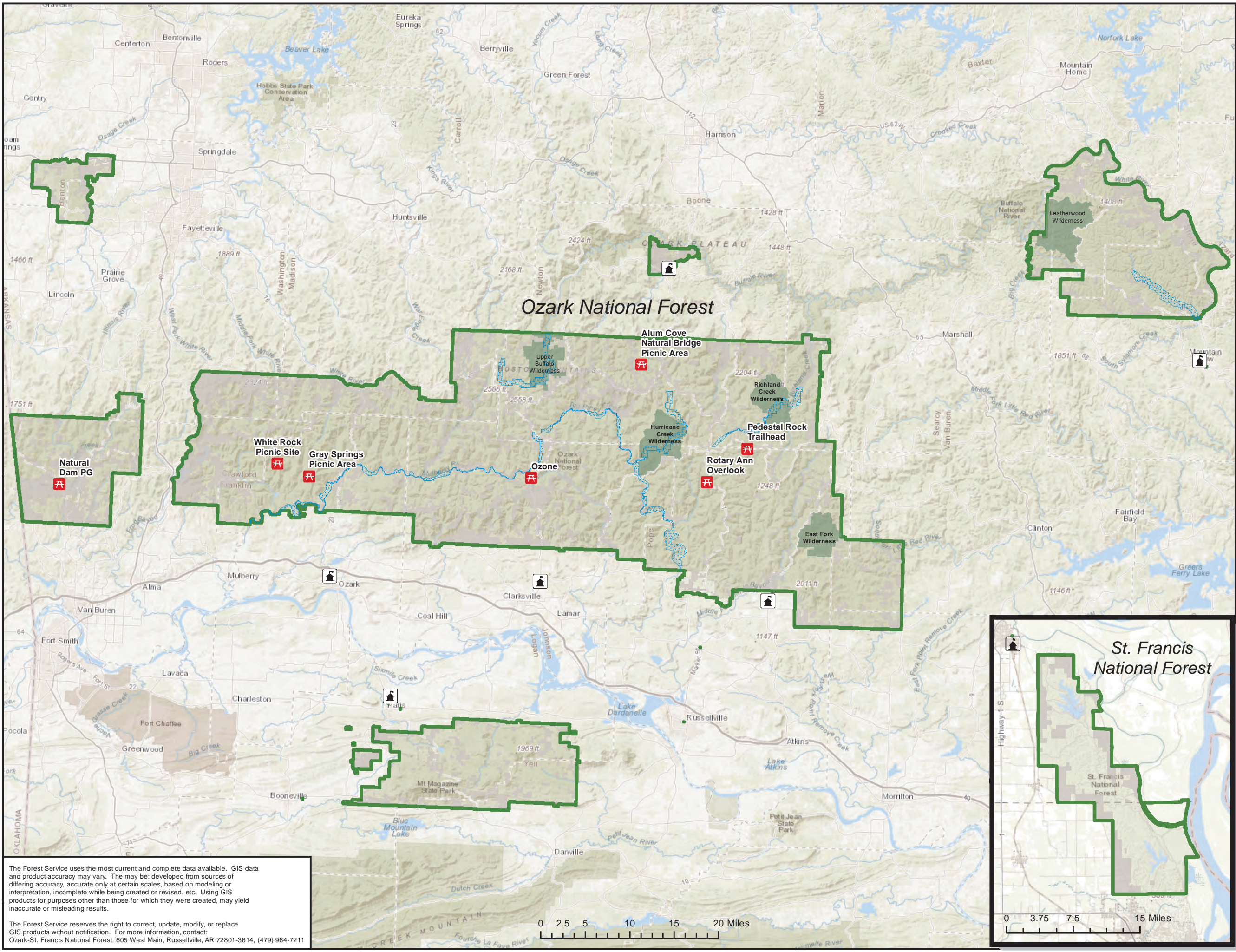
LORI D. WOOD
Forest Supervisor
Ozark-St. Francis National Forests

Violation of these prohibitions is punishable by a fine of not more than \$5,000 for an individual and \$10,000 for an organization, or imprisonment for not more than six months, or both. (16 U.S.C. 551 and 18 U.S.C. 3559 and 3571).

General Forest Day Use Area Supervisor's Order

*Ozark-St. Francis National Forests
Sylamore Ranger District
Big Piney Ranger District
Pleasant Hill Ranger District
Boston Mountain Ranger District
Magazine Ranger District
St. Francis Ranger District*

-  Forest Service Administrative Sites
- Recreation Sites**
 -  Day Use Area
 -  Wild and Scenic River Corridor
 -  Wilderness
 -  Private Land



The Forest Service uses the most current and complete data available. GIS data and product accuracy may vary. The may be: developed from sources of differing accuracy, accurate only at certain scales, based on modeling or interpretation, incomplete while being created or revised, etc. Using GIS products for purposes other than those for which they were created, may yield inaccurate or misleading results.

The Forest Service reserves the right to correct, update, modify, or replace GIS products without notification. For more information, contact:
Ozark-St. Francis National Forest, 605 West Main, Russellville, AR 72801-3614, (479) 964-7211