

UNITED STATES DEPARTMENT OF AGRICULTURE
UNITED STATES FOREST SERVICE
OZARK-ST. FRANCIS NATIONAL FORESTS
Big Piney Ranger District
Hector, Arkansas

Order No. 08-10-03-22-139

FOREST ORDER

Riding, hitching, tethering, or hobbling a horse or other saddle or pack animal

Pursuant to 36 CFR 261.50(a) and (b), the following acts are prohibited on the area, roads, and trails described in this order as Moccasin Gap Horse Camp. This closure is effective until December 31, 2026 or rescinded by an authorized Forest Official, whichever occurs first.

The following prohibited acts are set forth in 36 CFR 261.58

1. **Riding, hitching, tethering, or hobbling a horse or other saddle or pack animal in violation of posted instructions. (36 CFR 261.58(aa))**

Pursuant to 36 CFR 261.50(e), the following persons are exempt from this order:

1. Persons with a permit specifically authorizing the otherwise prohibited act or omission.
2. Any Federal, State, or local officer or member of an organized rescue or fire fighting force in the performance of an official duty.

Executed in Russellville, Arkansas, this 1 day of August 2022.

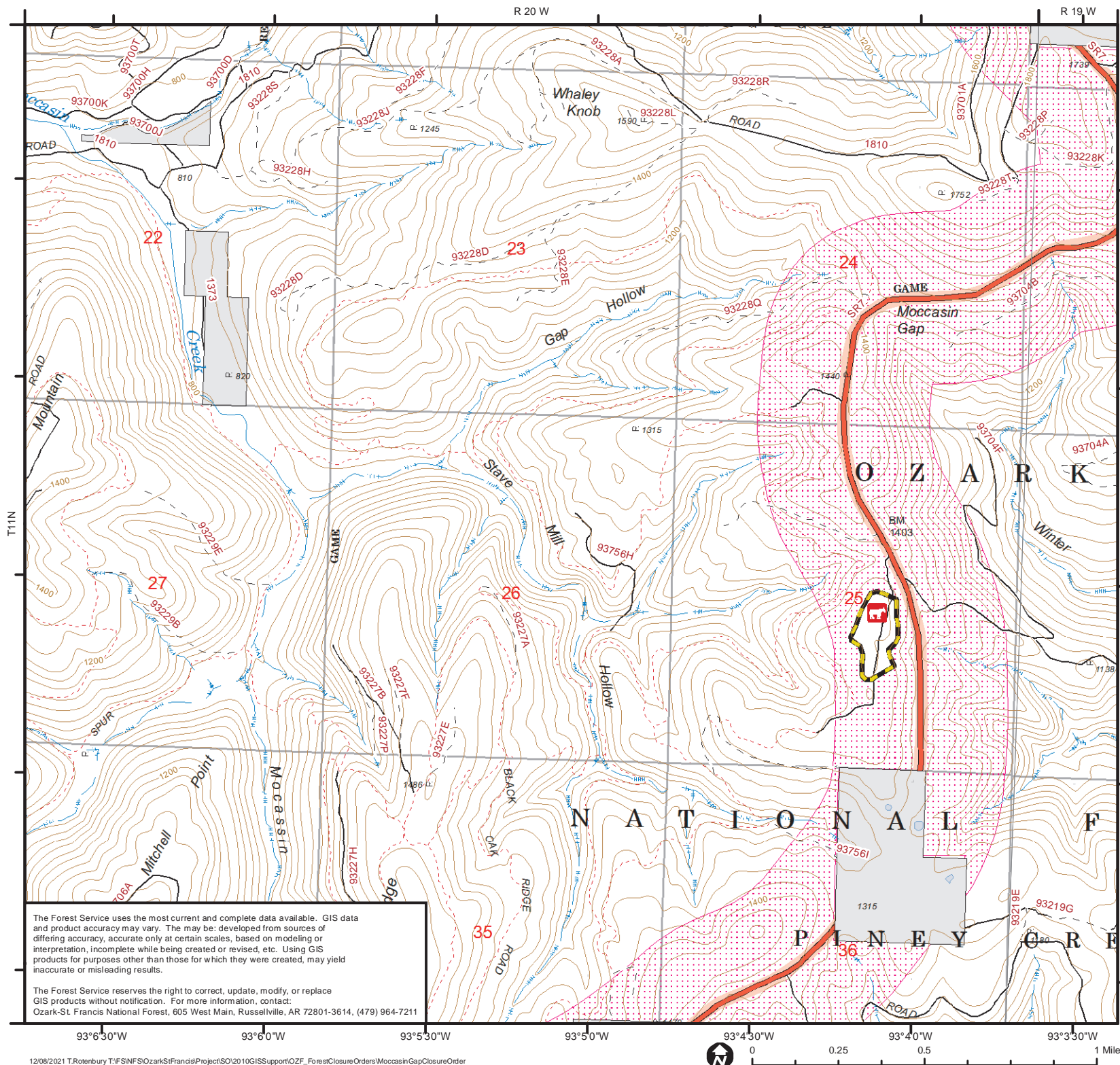


LORI D. WOOD

Forest Supervisor

Ozark-St. Francis National Forests

Violation of these prohibitions is punishable by a fine of not more than \$5,000 for an individual and \$10,000 for an organization, or imprisonment for not more than six months, or both. (16 U.S.C. 551 and 18 U.S.C. 3559 and 3571).




Moccasin Gap Supervisor's Order

Ozark-St. Francis National Forests
Big Piney Ranger District


Pope County, Arkansas
Legal Description:
T11N-R20W Sec. 25


 Recreation Area


 Horse Camp


Roads by Operation Maintenance Level

 Closed

 High Clearance Vehicles

 Suitable for Passenger Cars

 Moderate Degree of User Comfort

 High Degree of User Comfort

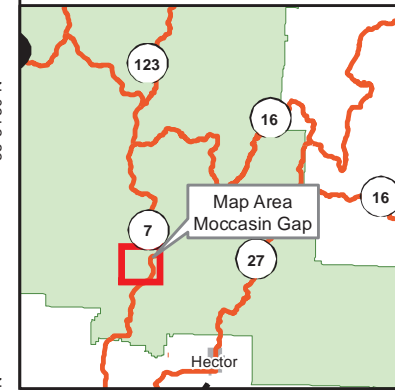
 Scenic Byway Corridor

 Trail

 Private Land

The Forest Service uses the most current and complete data available. GIS data and product accuracy may vary. The may be: developed from sources of differing accuracy, accurate only at certain scales, based on modeling or interpretation, incomplete while being created or revised, etc. Using GIS products for purposes other than those for which they were created, may yield inaccurate or misleading results.

The Forest Service reserves the right to correct, update, modify, or replace GIS products without notification. For more information, contact:
Ozark-St. Francis National Forest, 605 West Main, Russellville, AR 72801-3614, (479) 964-7211



0 0.25 0.5 1 Miles