

**UNITED STATES DEPARTMENT OF AGRICULTURE  
UNITED STATES FOREST SERVICE  
OZARK-ST. FRANCIS NATIONAL FORESTS  
Boston Mountain Ranger District**

**Order No. 08-10-05-22-129**

**FOREST ORDER**

**WHITE ROCK MOUNTAIN BLUFFS - AREA CLOSURE  
RAPPELLING**

Pursuant to 36 CFR 261.50, the following acts are prohibited on the area, roads, and trails described in this order as the bluffs and rock outcrops in and around the White Rock Mountain Recreation Area and White Rock Mountain Rim Trail. This area is within the Ozark-St. Francis National Forests and is depicted in the survey attached hereto and incorporated herein. This closure is effective from the date signed by the Forest Supervisor through December 31, 2026 or rescinded by an authorized Forest Official, whichever occurs first.

**The following are prohibited acts as set forth in 36 CFR 261.53:**

- 1. Being on the rock surface of the White Rock Mountain area bluffs for the protection of threatened and endangered species of the order Chiroptera. (36 CFR 261.53 (a))**
- 2. Being on the rock surface of the White Rock Mountain area bluffs for the protection of the White Rock Special Interest Area, specified for its geological interest. (36 CFR 261.53 (c))**
- 3. Being on the rock surface of the White Rock Mountain area bluffs for the public safety of the recreational hikers that frequent the White Rock Rim Trail. (36 CFR 261.53 (e))**

Pursuant to 36 CFR 261.50(e), the following persons are exempt from this order:

- 1. Persons with a permit specifically authorizing the otherwise prohibited act or omission.**
- 2. Any Federal, State or local officer or member of an organized rescue or fire fighting force in the performance of an official duty with approval of District Ranger.**

Executed in Russellville, Arkansas, this 1 day of August 2022.

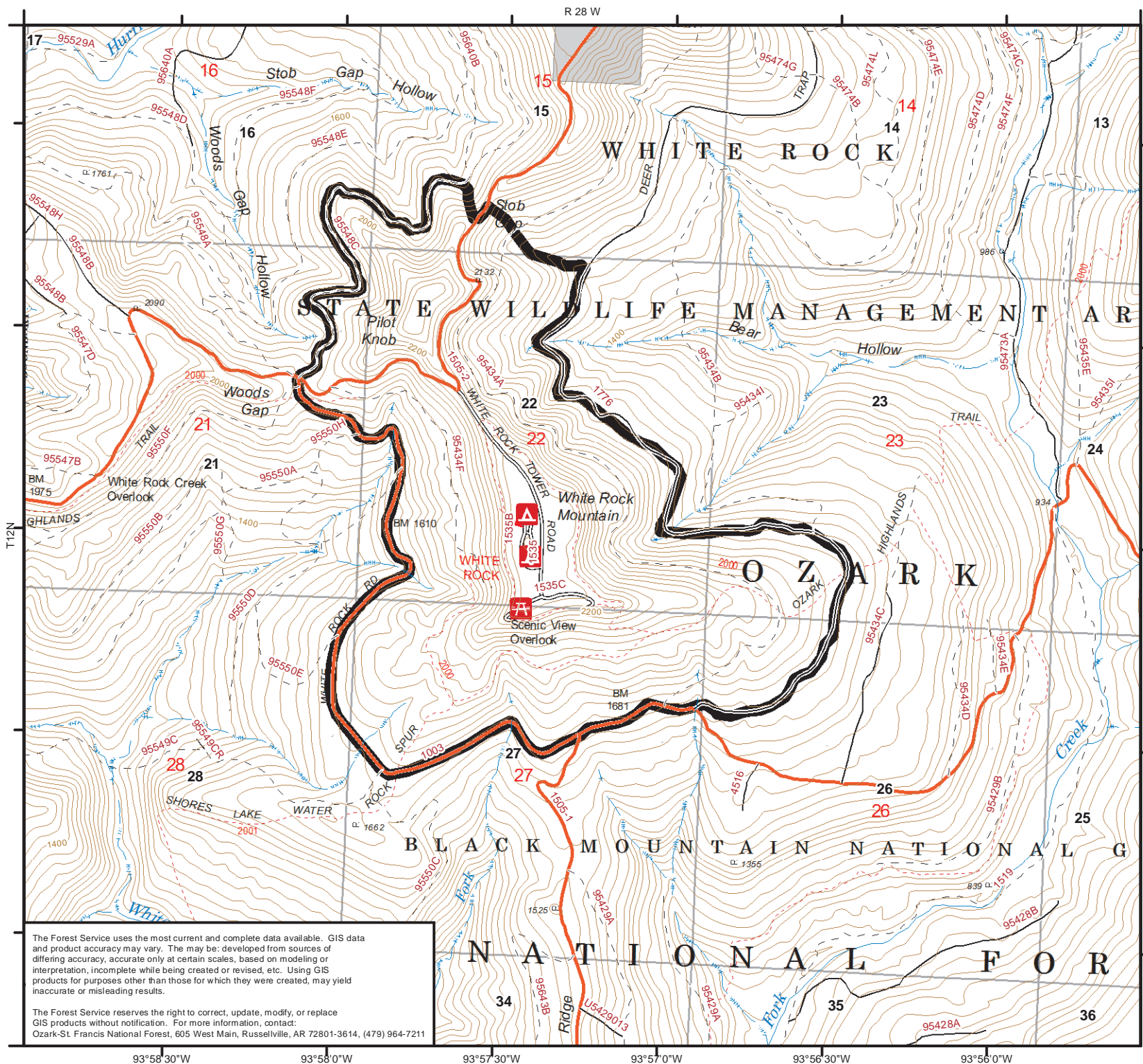


LORI D. WOOD

Forest Supervisor

Ozark-St. Francis National Forests

Violation of these prohibitions is punishable by a fine of not more than \$5,000 for an individual and \$10,000 for an organization, or imprisonment for not more than six months, or both. (16 U.S.C. 551 and 18 U.S.C. 3559 and 3571).



# White Rock Area Rappelling Supervisor's Order

*Ozark-St. Francis National Forests  
Boston Mountain Ranger District*

Franklin County, Arkansas  
Legal Description:  
T12N-R28W Sec. 22



 Campground

 Picnic & Day Use

Trailhead

### Roads by Operation Maintenance Level



— Closed



— High Clearance Vehicles



== Suitable for Passenger Cars



— Moderate Degree of User Comfort



High Degree of User Comfort



Recreation Area



Wild and Scenic River Corridor



Scenic Byway Corridor



-- Trail



Private Land

