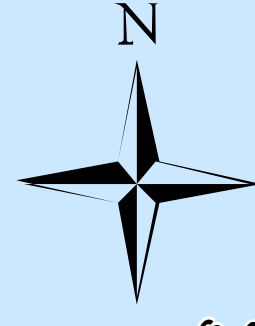
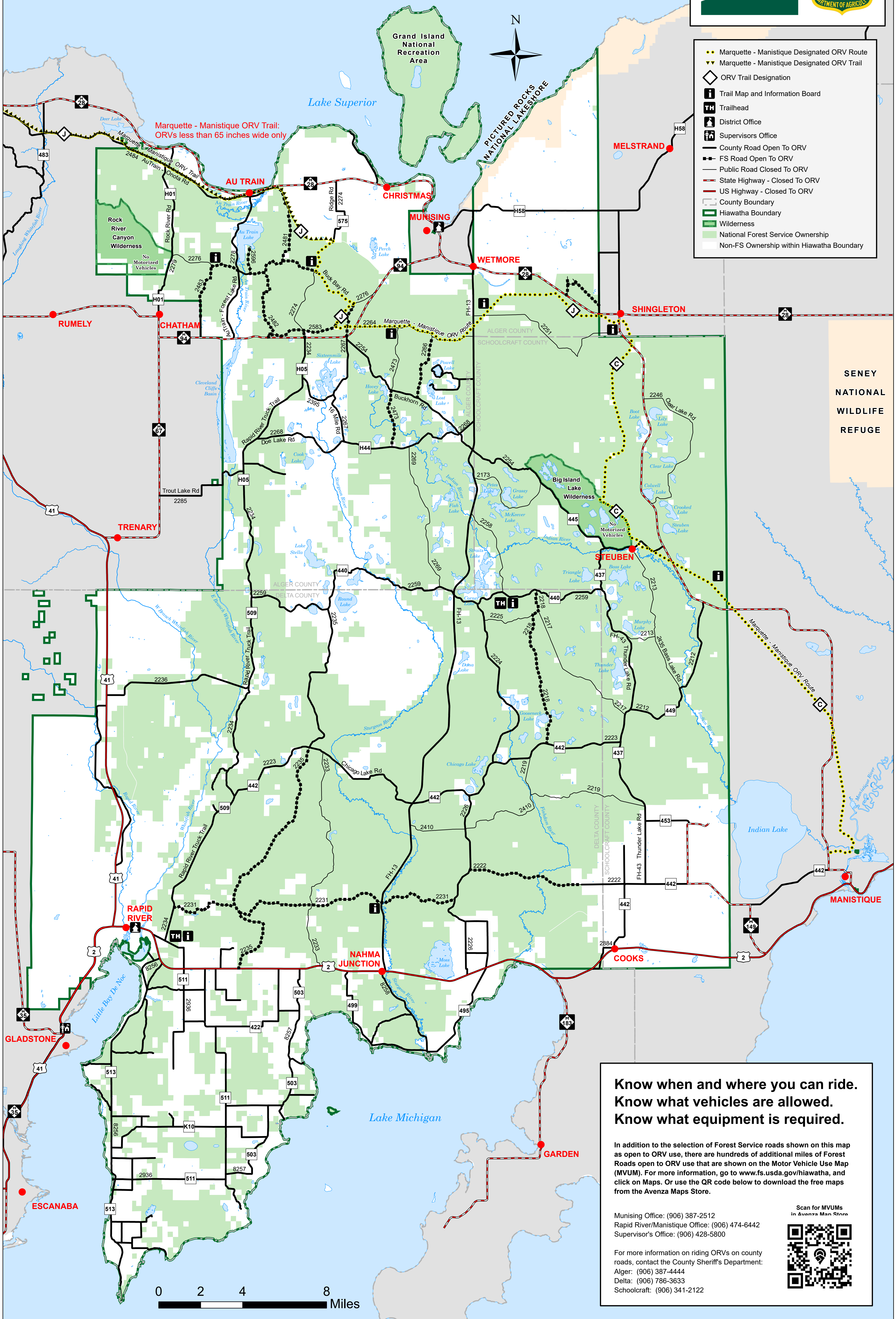


Hiawatha National Forest - West Zone

Designated Off-Road Vehicle (ORV) Trails and Roads Open to ORV Use



- ◆ Marquette - Manistique Designated ORV Route
- ▼ Marquette - Manistique Designated ORV Trail
- ◇ ORV Trail Designation
- i Trail Map and Information Board
- TH Trailhead
- D District Office
- S Supervisors Office
- County Road Open To ORV
- Public Road Closed To ORV
- State Highway - Closed To ORV
- US Highway - Closed To ORV
- County Boundary
- Hiawatha Boundary
- Wilderness
- National Forest Service Ownership
- Non-FS Ownership within Hiawatha Boundary



SENEY
NATIONAL
WILDLIFE
REFUGE

**Know when and where you can ride.
Know what vehicles are allowed.
Know what equipment is required.**

In addition to the selection of Forest Service roads shown on this map as open to ORV use, there are hundreds of additional miles of Forest Roads open to ORV use that are shown on the Motor Vehicle Use Map (MVUM). For more information, go to www.fs.usda.gov/hiawatha, and click on Maps. Or use the QR code below to download the free maps from the Avenza Maps Store.

Munising Office: (906) 387-2512
 Rapid River/Manistique Office: (906) 474-6442
 Supervisor's Office: (906) 428-5800

For more information on riding ORVs on county roads, contact the County Sheriff's Department:
 Alger: (906) 387-4444
 Delta: (906) 786-3633
 Schoolcraft: (906) 341-2122

Scan for MVUMs in Avenza Maps Store

