



**ORDER OF THE FOREST SUPERVISOR
RESTRICTING THE OCCUPANCY AND USE
OF THE PINE NATIONAL SCENIC RIVER CORRIDOR
IN THE HURON-MANISTEE NATIONAL FORESTS**

Under the authority of the Act of Congress of June 4, 1897, as amended (16 USC 551), and the Secretary of Agriculture's Regulations 36 CFR 261.50(a) and or (b), the following acts and omissions are prohibited in the Pine National Scenic River Corridor on the Huron-Manistee National Forests. This order replaces same order R904-14-12 dated 7th day of October, 2014.

A. Camping

1. Camping within a ¼ mile of Pine National Scenic River except at Peterson Bridge campground. 36 CFR 261.58 (e)

B. Marine prohibitions

1. Leaving a vessel unattended more than 24 hours. 36 CFR 261.58 (p)
2. Launching a vessel except at designated sites. 36 CFR 261.58 (r)
3. Entering, leaving, or going upon National Forest lands within the boundaries of the Pine National Scenic River, in, on or upon any vessel and/or floatable object during the period of May 15 through September 10, is prohibited unless authorized by permit. 36 CFR 261.58 (z)
4. Operate vessel in violation of all Michigan State and or Coast Guard regulations. 36 CFR 261.58 (n)

C. Sanitation

1. Possessing, storing or transporting foam coolers, glass beverage and/ food containers on the Pine National Scenic River. 36 CFR 261.58 (cc)

This order applies to the Pine National Scenic River Corridor on the Huron-Manistee National Forests.

Definition: The Pine National Scenic River Corridor is any area of the Huron-Manistee National Forests abutting the Pine River 1 mile downstream from the Lincoln Bridge to a point ½ mile up stream from Stronach Dam. The prohibition and description of the Pine River Corridor are identified in Chapter 36 Code of Federal Regulations, Subpart C- Prohibitions by Regions, Section 261.78 (a).

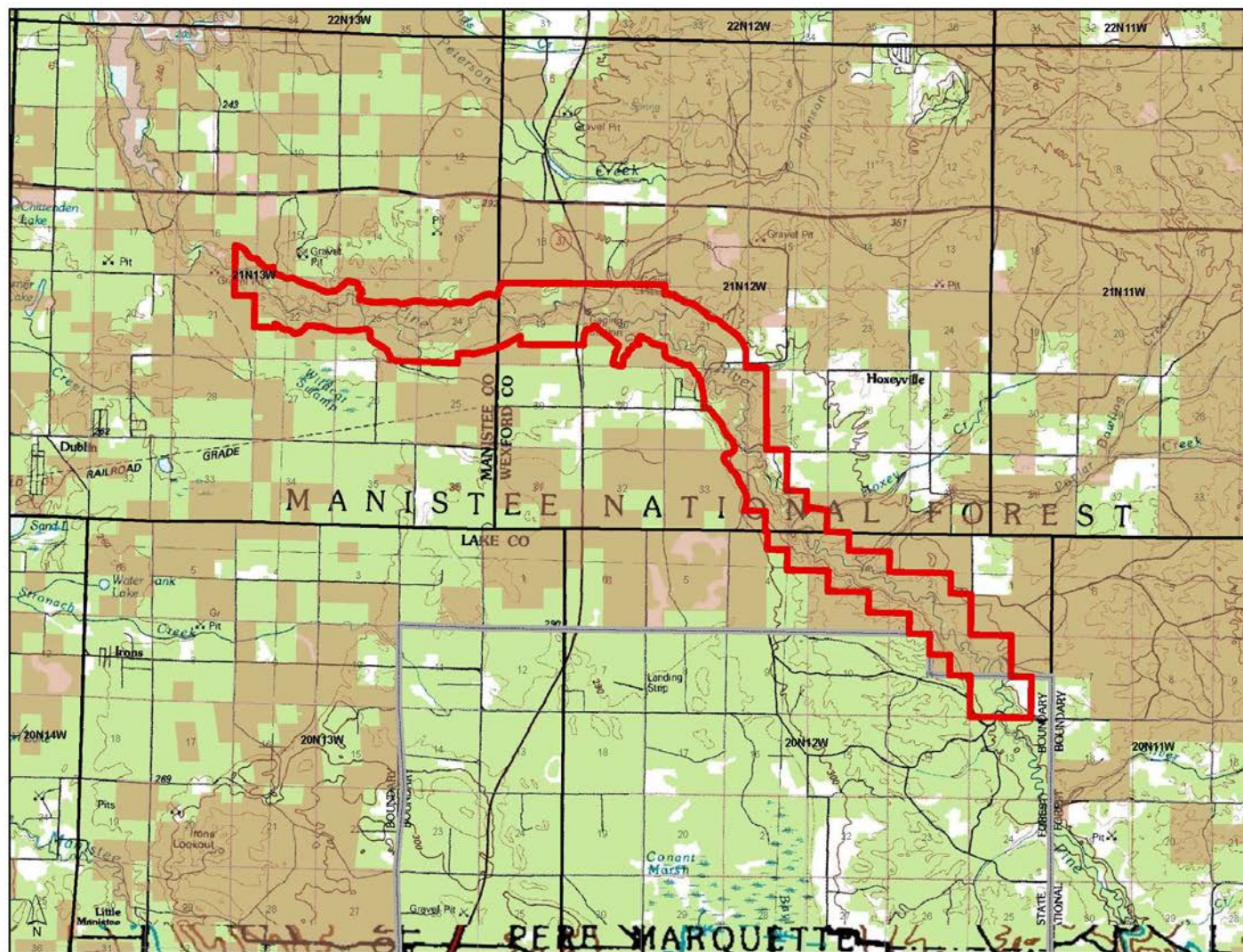
Pursuant to 36 CFR 261.50 (e) the following persons will be exempt from the order:

1. Any Federal, State, or Local officers, or members of an organized rescue or firefighting force engaged in the performance of an official duty.
2. Persons with a valid permit in their possession signed by the District Ranger or Forest Supervisor specifically authorizing the otherwise prohibited act or omission.
3. Individuals identified as exempt in other agreements or (MOU's) Memorandum of Understanding.

Violation of these prohibitions is punishable by a fine of not more than \$5,000 and imprisonment for not more than six (6) months, or both under the authority of Title 16 USC 551, Title 18 USC 3559 and 3571.

Dated this 27th day of October 2014 at Cadillac, Michigan.

Leslie Auriemmo
Forest Supervisor
Huron-Manistee National Forests



Pine River National Scenic River Corridor

Legislative Map P.L. 102-249
Michigan Scenic Rivers Act of 1991

4916 acres in parts of T20N, R12W,
Lake County, T21N, R12W, Wexford
County and T20N, R13W, Manistee
County, Michigan Meridian.

U.S. Forest Service - Region 9
Huron-Manistee National Forests
U.S. Congressional District 2

Copies of the map are available for public
inspection in the Office of the Regional
Forester, Region 9, Milwaukee WI and
the Huron-Manistee National Forest
Supervisors Office, Cadillac, MI.

Legend

- Scenic River Corridor
- National Forest Boundary
- Forest Service Ownership

0 1 2
Miles

Map Creation Date - April 13, 2012
Map Revision Date - April 16, 2012

Vicinity Map



Disclaimer:
The USDA Forest Service makes no warranty, expressed
or implied regarding the data displayed on this map, and
reserves the right to correct, update, modify or replace
this information without notification.

© 2012 US Forest Service
Map created by: [illegible]



**ORDER OF THE FOREST SUPERVISOR
RESTRICTING THE OCCUPANCY AND USE
OF THE PINE NATIONAL SCENIC RIVER CORRIDOR
IN THE HURON-MANISTEE NATIONAL FORESTS**

Under the authority of the Act of Congress of June 4, 1897, as amended (16 USC 551), and the Secretary of Agriculture's Regulations 36 CFR 261.50(a) and or (b), the following acts and omissions are prohibited in the Pine National Scenic River Corridor on the Huron-Manistee National Forests. This order replaces same order R904-14-12 dated 7th day of October, 2014.

A. Camping

1. Camping within a ¼ mile of Pine National Scenic River except at Peterson Bridge campground. 36 CFR 261.58 (e)

B. Marine prohibitions

1. Leaving a vessel unattended more than 24 hours. 36 CFR 261.58 (p)
2. Launching a vessel except at designated sites. 36 CFR 261.58 (r)
3. Entering, leaving, or going upon National Forest lands within the boundaries of the Pine National Scenic River, in, on or upon any vessel and/or floatable object during the period of May 15 through September 10, is prohibited unless authorized by permit. 36 CFR 261.58 (z)
4. Operate vessel in violation of all Michigan State and or Coast Guard regulations. 36 CFR 261.58 (n)

C. Sanitation

1. Possessing, storing or transporting foam coolers, glass beverage and/ food containers on the Pine National Scenic River. 36 CFR 261.58 (cc)

This order applies to the Pine National Scenic River Corridor on the Huron-Manistee National Forests.

Definition: The Pine National Scenic River Corridor is any area of the Huron-Manistee National Forests abutting the Pine River 1 mile downstream from the Lincoln Bridge to a point ½ mile up stream from Stronach Dam. The prohibition and description of the Pine River Corridor are identified in Chapter 36 Code of Federal Regulations, Subpart C- Prohibitions by Regions, Section 261.78 (a).

Pursuant to 36 CFR 261.50 (e) the following persons will be exempt from the order:

1. Any Federal, State, or Local officers, or members of an organized rescue or firefighting force engaged in the performance of an official duty.
2. Persons with a valid permit in their possession signed by the District Ranger or Forest Supervisor specifically authorizing the otherwise prohibited act or omission.
3. Individuals identified as exempt in other agreements or (MOU's) Memorandum of Understanding.

Violation of these prohibitions is punishable by a fine of not more than \$5,000 and imprisonment for not more than six (6) months, or both under the authority of Title 16 USC 551, Title 18 USC 3559 and 3571.

Dated this 27th day of October 2014 at Cadillac, Michigan.

Leslie Auriemma
Forest Supervisor
Huron-Manistee National Forests

Pine River National Scenic River Corridor

Legislative Map PL. 102-249
Michigan Scenic Rivers Act of 1991
4816 acres in parts of T20N, R12W,
Lake County T21N, R12W, Westford
County and T20N, R13W, Manistee
County, Michigan Meridian.

U.S. Forest Service - Region 9
Huron-Manistee National Forests
U.S. Congressional District 2

Copies of this map are available for public
inspection in the Office of the Regional
Forester, Region 9, Marquette MI and
the Huron-Manistee National Forest
Supervisor's Office, Cadillac, MI.



Map Creation Date - April 13, 2012
Map Revision Date - April 16, 2012

Vicinity Map



Disclaimer
The USDA Forest Service makes no warranty, expressed
or implied, as to the accuracy, reliability, or
completeness of the information provided, and
assumes no responsibility for any errors or
omissions. The information is provided for informational
purposes only and should not be used for legal
purposes.

