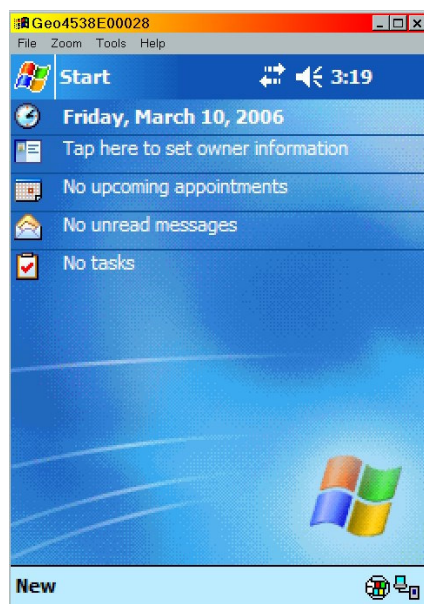


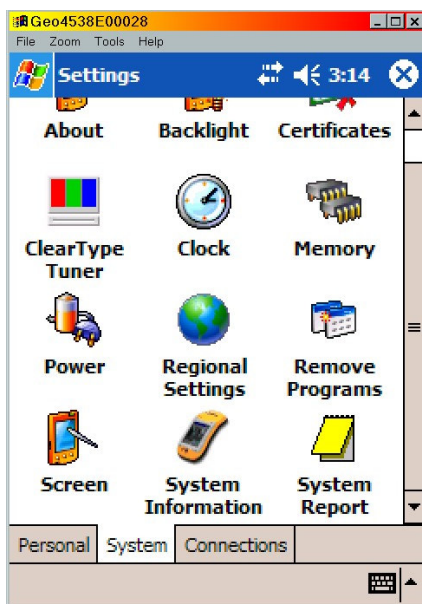
How can I determine what version of CE operating system and GPS firmware I have?

If you have **Windows Mobile...**

1. At the Today screen, select **Start** → **Settings**. This opens the *Settings* screen. Click on the **System** tab.

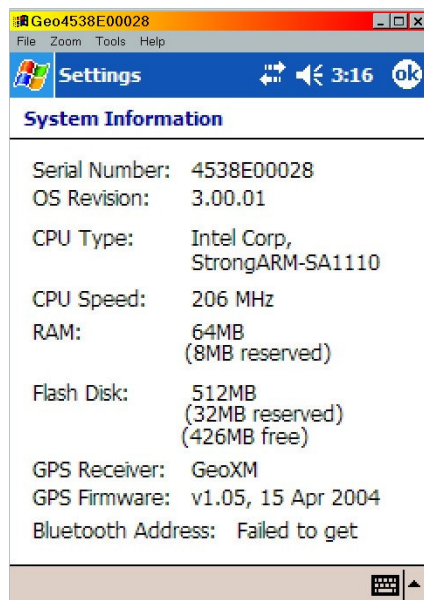


Today screen



Settings screen

2. Double-click **System Information**. Look for OS Revision and GPS firmware. In the following examples, the OS Revision is 3.00.01 and GPS firmware is v1.05 for the 2003 series and 5.1.12 and v46.00 for the 2005 series.



2003 series System Information screen



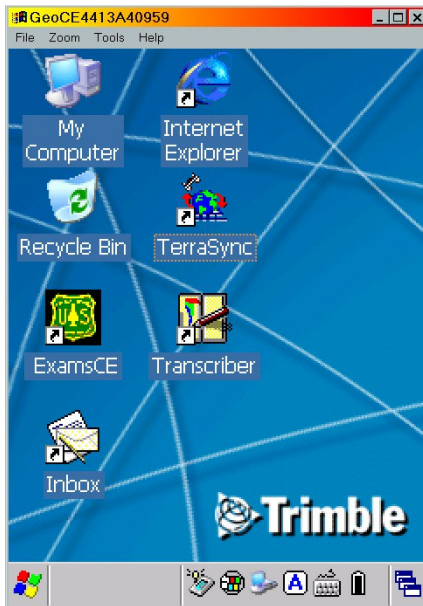
2005 series System Information screen

3. You can also run a system report that includes this information by double-clicking **System Report** on the *Settings* screen. This will generate a report that can be saved as a textfile.

How can I determine what version of CE operating system and GPS firmware I have?

If you have **Windows CE.NET**...

1. At the main screen, select **Start** → **Settings** → **Control Panel**. This opens Control Panel.



Main screen

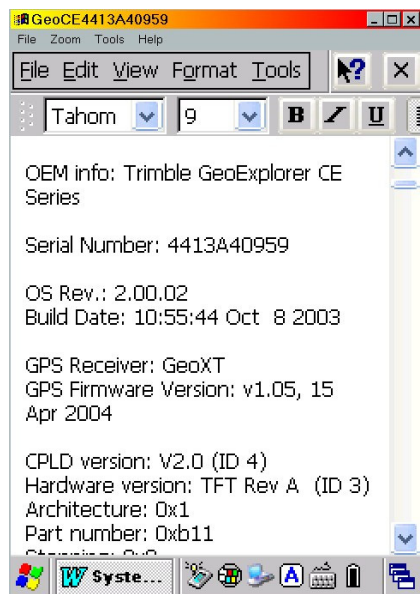


Control Panel screen

2. Double-click **System**. Look for OS Revision and GPS firmware. In the following example, the OS Revision is 2.00.02 and GPS firmware is v1.05.
3. You can also run a system report that includes this information by selecting **Start** → **Utilities** → **System Report**. This will generate a report that can be saved as a textfile.



System Properties screen



System Report