

What are the differences between Windows CE operating systems?

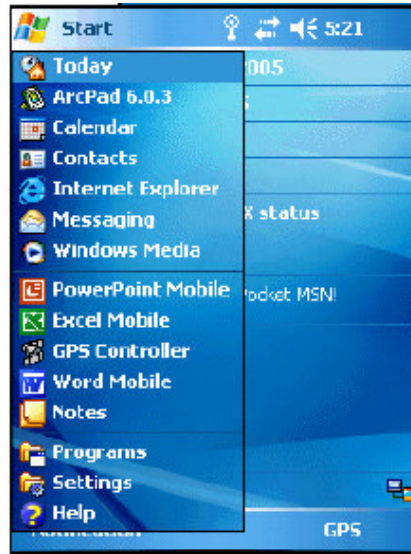
The comparison between Windows CE.NET and Windows Mobile is similar to the comparison between Windows 2000 and Windows XP. Many applications that ran on earlier versions of Mobile or CE.NET may no longer run on Mobile 2005. The design of the CE operating systems is also similar in look and feel to their PC counterparts.

Windows Mobile 2005

OS revision 5.1.12



Today Screen

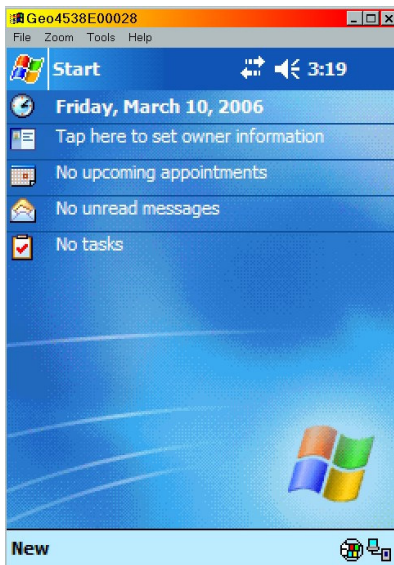


Today Screen – Start Menu

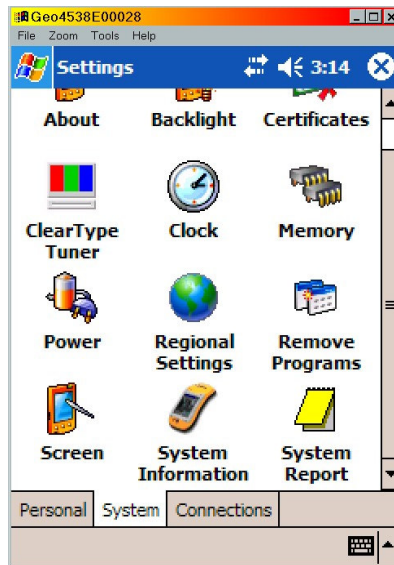
- Microsoft Activesync 4.1 or later is required.
- Connection to a Windows 2000 PC may be difficult.
- Applications compatible
 - ArcPad 7
 - GPSCorrect 2
- Applications not compatible
 - ArcPad 6.0.3 or earlier
 - GPSCorrect 1.11
 - I-Mobile Apps version 1.1
 - Activesync versions prior to 4.1
- Trimble GPS firmware is bundled with the OS.

Windows Mobile 2003

OS revision 3.00.01



Today Screen



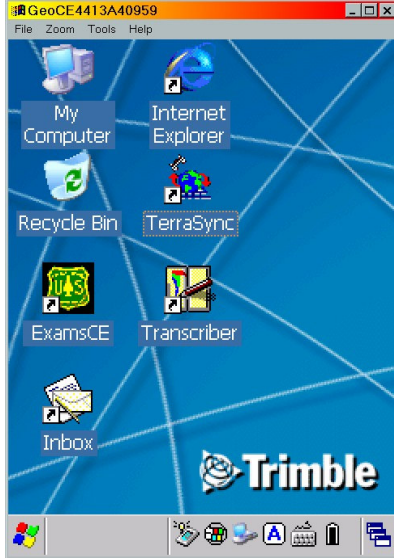
Settings Screen
(Start → Settings → System tab)

- Similar to Windows XP.
- Start menu typically occurs at the top of the screen.
- Creating a connection to the PC differs from CE.NET.
- PC connection options accessed through Activesync in Windows Mobile.

What are the differences between Windows CE operating systems?

Windows CE.NET

OS revision 2.00.02



Main Screen



Control Panel

(Start → Settings → Control Panel)

- Similar to Windows 2000.
- Start menu typically occurs at the bottom of the screen.
- PC connection options accessed through Control Panel.